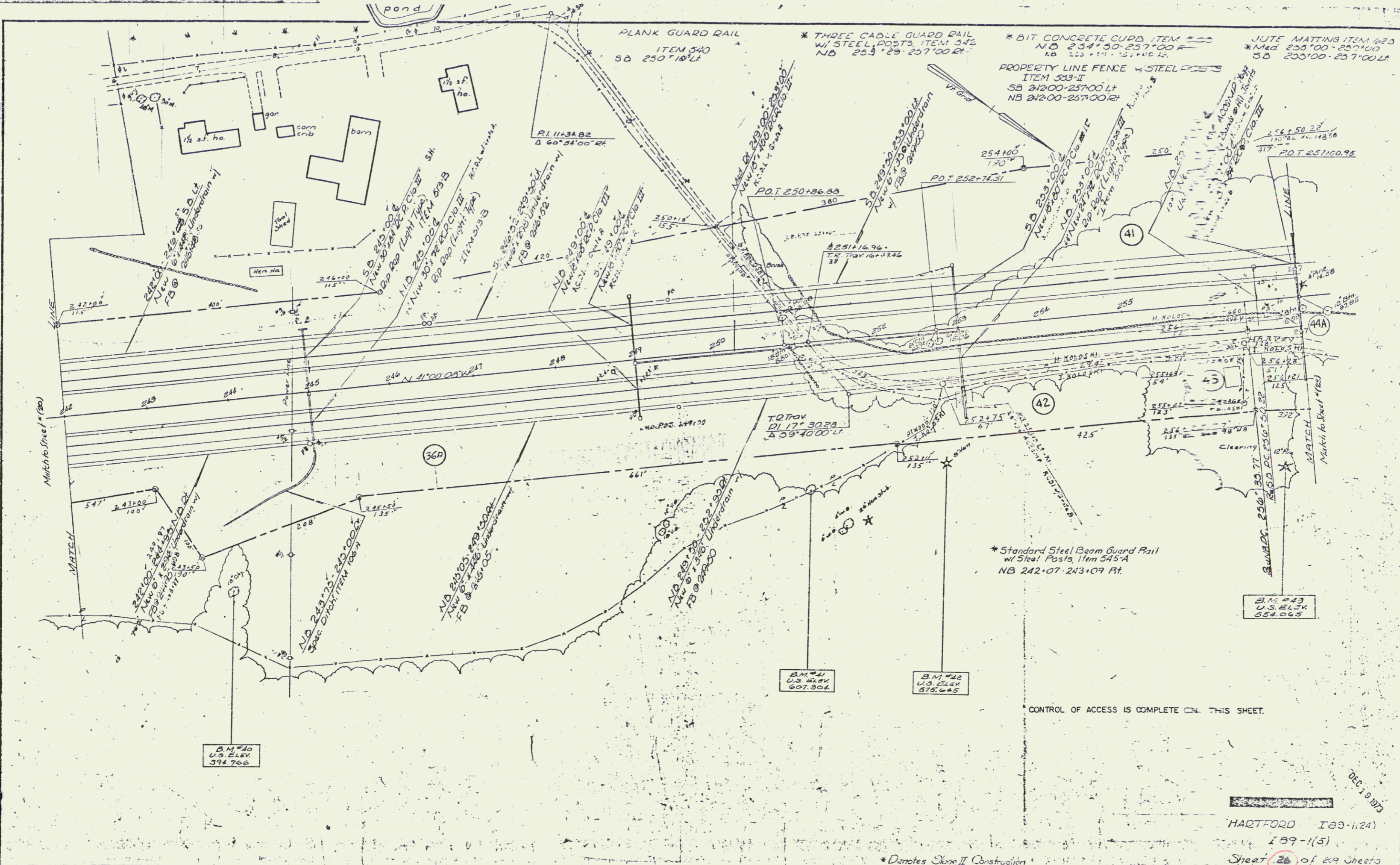


PLAN
 DATE
 BY
 TITLE
 SHEET NO.
 OF SHEETS



JUTE MATTING ITEM 623
 * Mat 255'00"-257'00"
 SB 255'00"-257'00"
 NB 255'00"-257'00"

PROPERTY LINE FENCE w/ STEEL POSTS
 ITEM 533-F
 SB 242'00"-257'00"
 NB 242'00"-257'00"

* THREE CABLE GUARD RAIL
 w/ STEEL POSTS, ITEM 542
 NO. 253'25"-257'00"

PLANK GUARD RAIL
 ITEM 540
 SB 250'18"

* Standard Steel Beam Guard Rail
 w/ Steel Posts 14m 245'A
 NB 242'07"-243'09" Pt.

B.M. #40
 U.S. ELEV.
 594.766

B.M. #41
 U.S. ELEV.
 607.304

B.M. #42
 U.S. ELEV.
 575.645

B.M. #43
 U.S. ELEV.
 554.065

CONTROL OF ACCESS IS COMPLETE ON THIS SHEET.

HARTFORD I89-1124

189-1(5)

Sheet 26 of 29 Sheets

Sheet 59 of 59

DEC 10 1973

* Denotes Skop II Construction

19