

Standard Steel Beam Guard Rail
 1/2" Steel Posts, Item 641-A
 Northbound 351+00 to 362+00 EA
 Southbound 359+00 to 361+25 LA

Joint Matting
 Item 623
 Median 352+70 to 354+45
 Median 355+50 to 356+50
 Southbound 352+70 to 354+15 LA
 Northbound 352+70 to 354+45 EA
 Southbound 359+00 to 360+50 LA

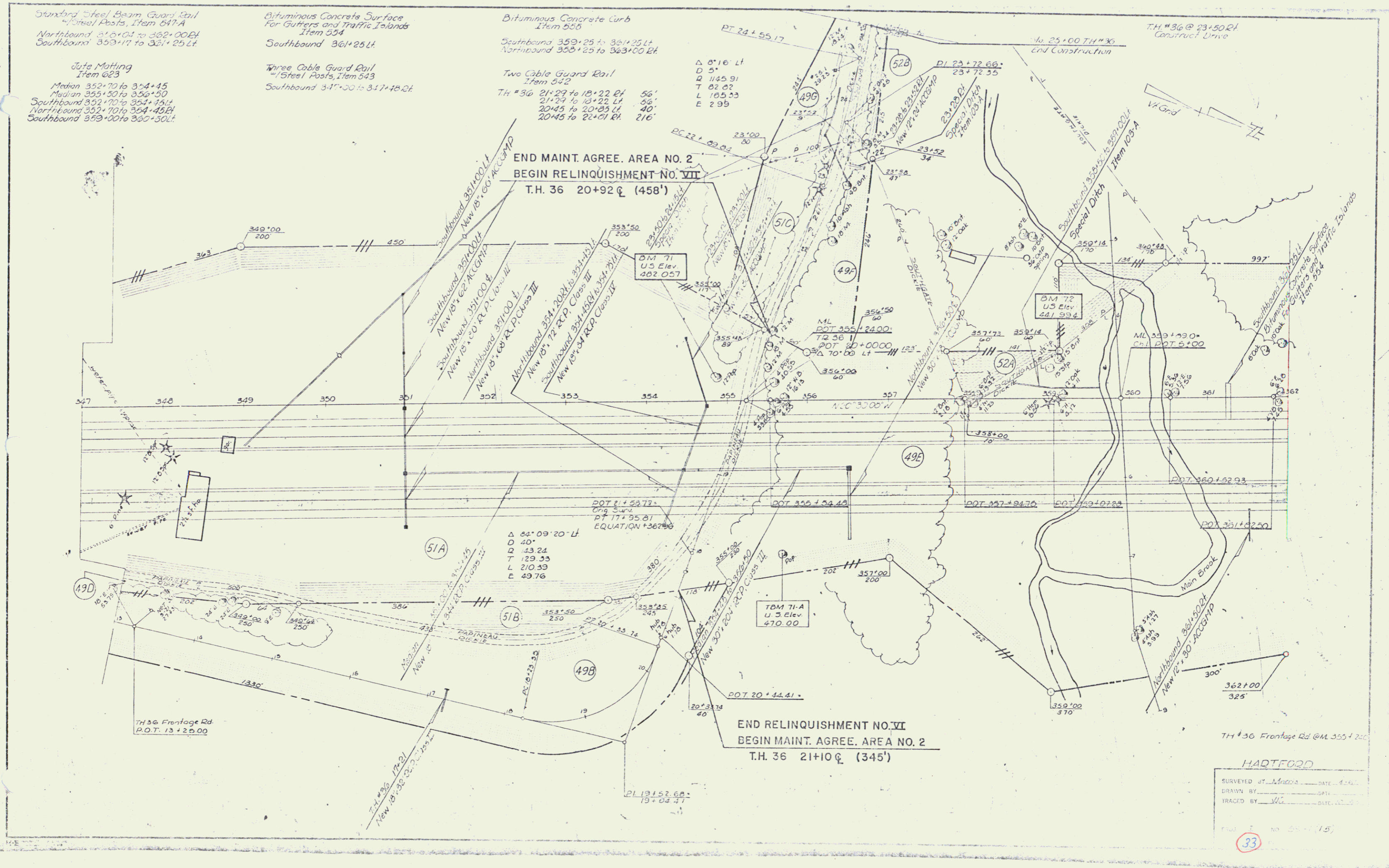
Bituminous Concrete Surfaces
 For Gutters and Traffic Islands
 Item 554
 Southbound 361+25 LA

Three Cable Guard Rail
 1/2" Steel Posts, Item 543
 Southbound 317+00 to 317+18.21

Bituminous Concrete Curb
 Item 555
 Southbound 359+25 to 361+25 LA
 Northbound 358+25 to 363+00 EA

Two Cable Guard Rail
 Item 542
 T.H. #36 21+22 to 18+22 EA 56'
 21+24 to 18+22 LA 56'
 20+45 to 20+25 LA 40'
 20+45 to 21+01 EA 216'

Δ 8°16' LT
 D 5'
 Q 1145.91
 T 82.82
 L 185.53
 E 2.99



HARTFORD
 SURVEYED BY: _____ DATE: _____
 DRAWN BY: _____ DATE: _____
 TRACED BY: _____ DATE: _____

33