

Three Cable Guard Rail w/ Steel Posts
Item 543

Southbound 332+00 to 347+00 Lt
Southbound 337+42 to 342+86 Lt
Northbound 330+00 to 342+96 Rt

Sub-base of Sand, Mod
Item 202

Southbound 332+00 to 334+00
Northbound 332+00 to 335+50

Special Ditch
Item 101A

Southbound 337+75 to 337+50 Lt

Gravel Backfill, Item 222

Southbound 332+00 to 334+00
Northbound 332+00 to 335+50

Bituminous Concrete Curb, Item 555

Southbound 337+50 to 342+70 Lt

Stone Fill For Slope Protection
Item 522

Southbound 337+40 to 339+75 Lt

Jute Matting
Item 623

3L 2+50 to 4+70 Lt

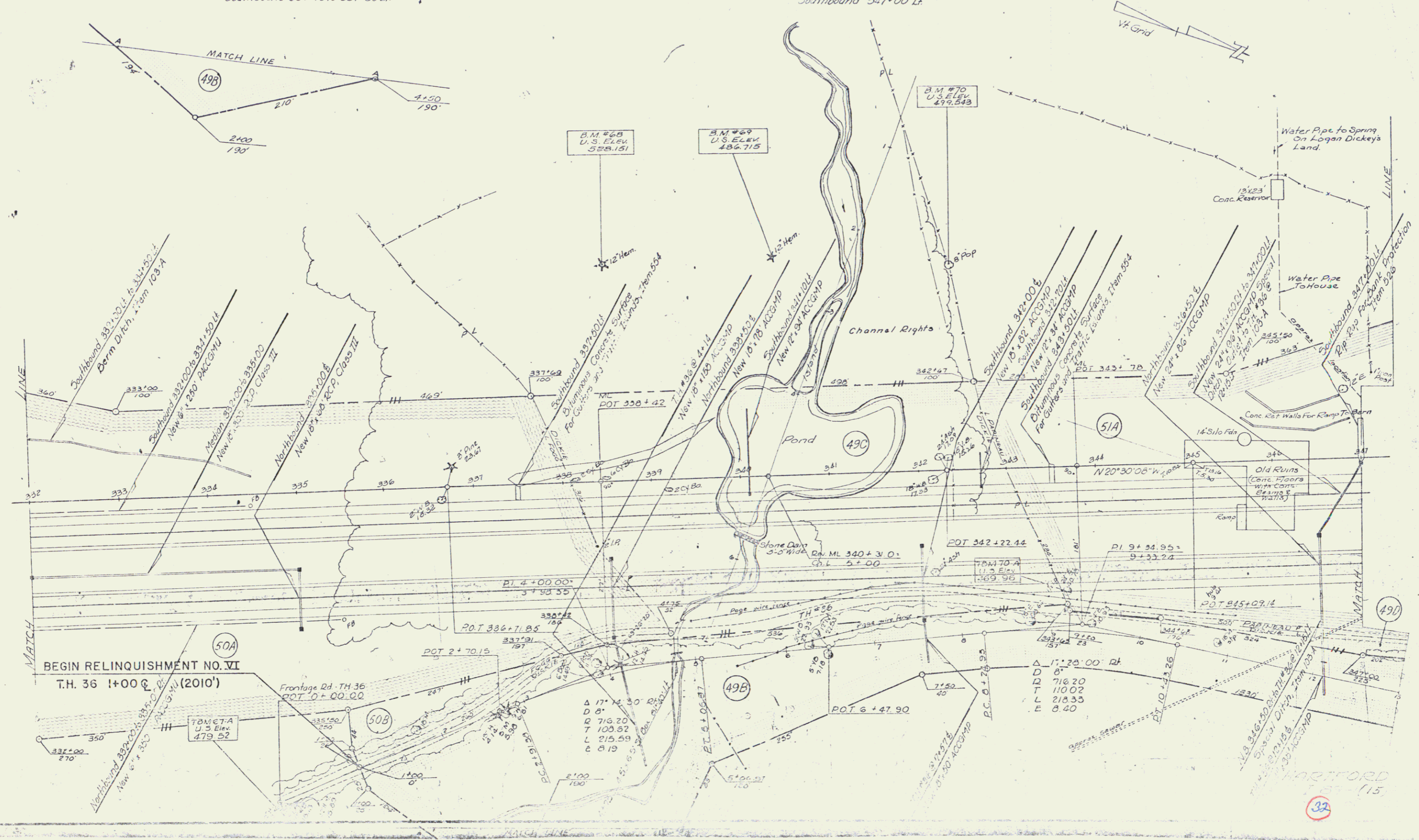
Two Cable Guard Rail
Item 542

T.H. 36 5+150 to 6+46 Rt
T.H. 36 5+43+30 to 6+50 Lt

Bituminous Concrete Surface For
Gutters and Traffic Islands, Item 554

Southbound 337+50 Lt
Southbound 337+00 Lt

DATE: 11/15/15
DRAWN BY: J. J. CHAMBERS
CHECKED BY: J. J. CHAMBERS
SCALE: AS SHOWN



BEGIN RELINQUISHMENT NO. VI
T.H. 36 1+00 (2010')

Frontage Rd. T.H. 36
POT 0+00.00

Δ 17° 14' 30" Rt
D 8'
Q 716.20
T 103.52
L 215.59
E 8.19

Δ 17° 20' 00" Rt
D 8'
T 110.02
L 218.35
E 8.40

32

HARTFORD
15