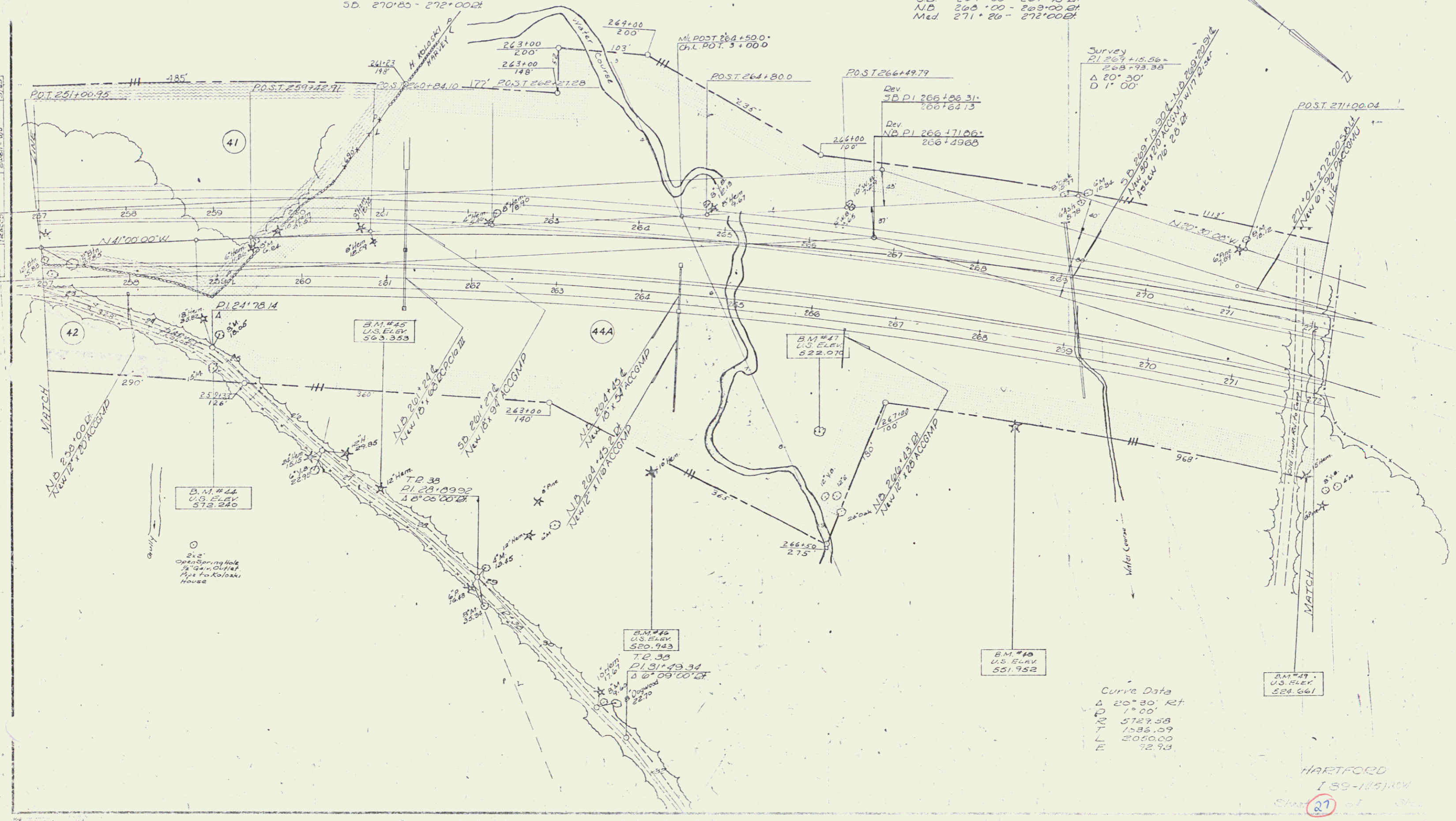


BIT CONCRETE CURB ITEM 533  
 NB 257'00" - 258'00" Lt  
 NB 262'50" - 266'43" Lt

THREE-RAIL GUARD RAIL  
 W/STEEL POSTS, ITEM 343  
 NB 257'00" - 258'25" Lt  
 NB 261'00" - 266'60" Lt  
 NB 268'70" - 269'70" Lt  
 NB 271'10" - 272'00" Lt  
 SD 260'98" - 266'20" Lt  
 SD 270'85" - 272'00" Lt

PLANK GUARD RAIL W/  
 PRESERVATIVE TREATMENT  
 ITEM 541-A  
 SD 271'75" Lt  
 NB 259'45" Lt  
 NB 271'95" Lt

JUTE MATTING, ITEM 623  
 Med 259'00" - 261'00"  
 NB 259'00" - 261'00" Lt  
 SD 259'00" - 261'00" Lt  
 Med 262'70" - 264'45"  
 Med 266'81" - 269'10"  
 SD 267'00" - 269'70" Lt  
 NB 268'00" - 269'00" Lt  
 Med 271'26" - 272'00" Lt



Curve Data  
 Δ 20°30' Rt  
 D 1°00'  
 L 572.58  
 T 1536.09  
 M 2050.09  
 R 92.93

HARTFORD  
 I 89-115104  
 Sheet 27 of 34