

Survey
 EB Curve Data
 Δ 55°31'30" LT
 D 2"
 R 2864.79
 T 1505.21
 L 2776.58
 E 272.78
 Bank 5¢ per foot

Survey
 WB Curve Data
 Δ 51°41'35" LT
 D 3"
 R 1707.86
 T 721.24
 L 1726.44
 E 213.17
 Bank 75¢ per ft

Spiral Curve
 Δ_c 3°45' Δ_c 57°21'35"
 L_s 253.00 L_c 1276.44
 P 1.36
 K 124.78
 X_c 219.84
 T_s 51.85
 T_c 1028.88
 L_T 146.70
 S_T 68.37
 L_C 249.95

TS 118+136.90
 SC 115+36.90
 CS 128+13.84
 ST 130+6.34

Map-Exp
 Item 52-R
 EB 116+46 RT-WB 114+90 LT
 WB 114+70 RT
 EB 117+17 RT-WB 116+00 LT

Property Line Fence With
 Steel Posts, Item 583-B
 W.B. 107+50-122+00 RT

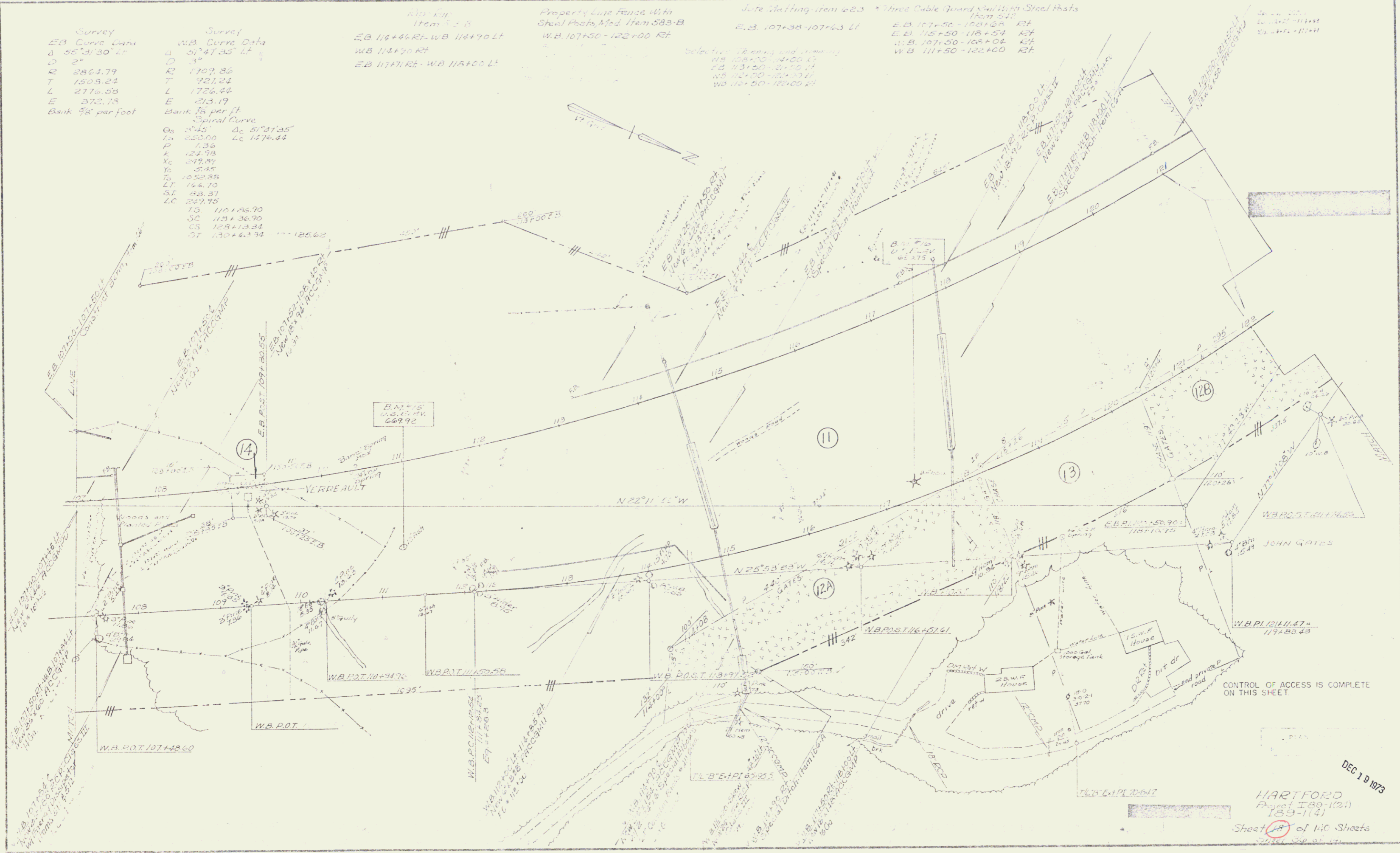
Gate Marking Item 623
 E.B. 107+38-107+63 LT

Three Cable Guard Rails With Steel Posts
 Item 515
 E.B. 117+70-108+60 RT
 E.B. 115+50-118+54 RT
 W.B. 107+50-108+04 RT
 W.B. 111+50-122+00 RT

Selective Thinning and Pruning
 W.B. 124+00-124+00 LT
 E.B. 121+00-121+00 RT
 W.B. 121+00-121+00 LT
 W.B. 121+00-121+00 RT

See also
 189-114
 189-114

PLAN
 1" = 100'
 1/4" = 10'
 1/8" = 5'
 1/16" = 2.5'
 1/32" = 1.25'



CONTROL OF ACCESS IS COMPLETE
 ON THIS SHEET.

DEC 19 1973

HARTFORD
 Project 189-114
 189-114
 Sheet 14 of 140 Sheets