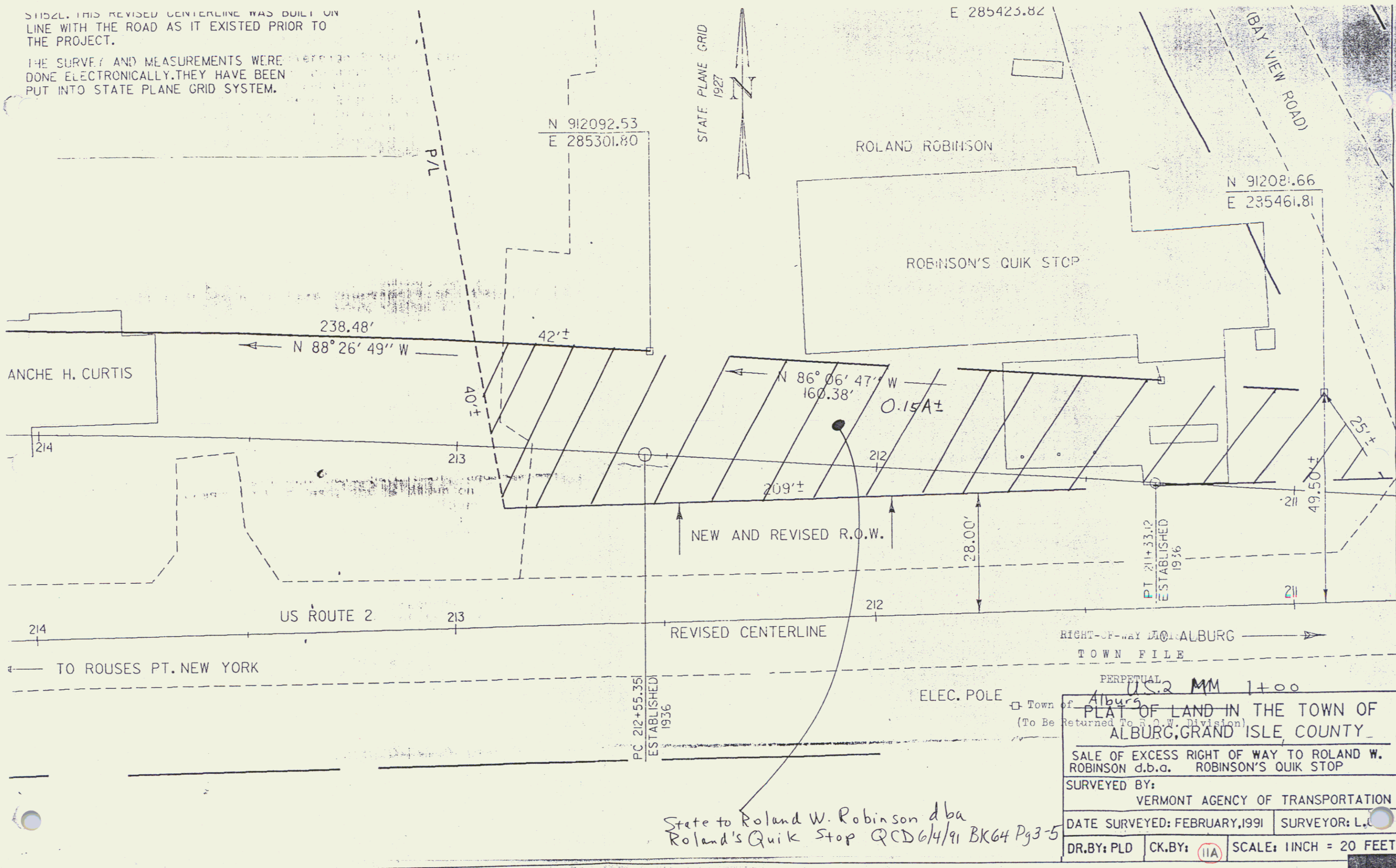


SHOWN. THIS REVISED CENTERLINE WAS BUILT ON
LINE WITH THE ROAD AS IT EXISTED PRIOR TO
THE PROJECT.

THE SURVEY AND MEASUREMENTS WERE
DONE ELECTRONICALLY. THEY HAVE BEEN
PUT INTO STATE PLANE GRID SYSTEM.



PERPETUAL	
U.S. 2 MM 1+00	
Town of <u>Alburs</u>	
PLAT OF LAND IN THE TOWN OF	
ALBURG, GRAND ISLE COUNTY	
SALE OF EXCESS RIGHT OF WAY TO ROLAND W. ROBINSON d.b.a. ROBINSON'S QUIK STOP	
SURVEYED BY:	
VERMONT AGENCY OF TRANSPORTATION	
DATE SURVEYED: FEBRUARY, 1991	SURVEYOR: L. C.
DR. BY: PLD	CK. BY: (11A)
SCALE: 1 INCH = 20 FEET	

State to Roland W. Robinson dba
Roland's Quik Stop QCD 6/4/91 BK64 Pg 3-5