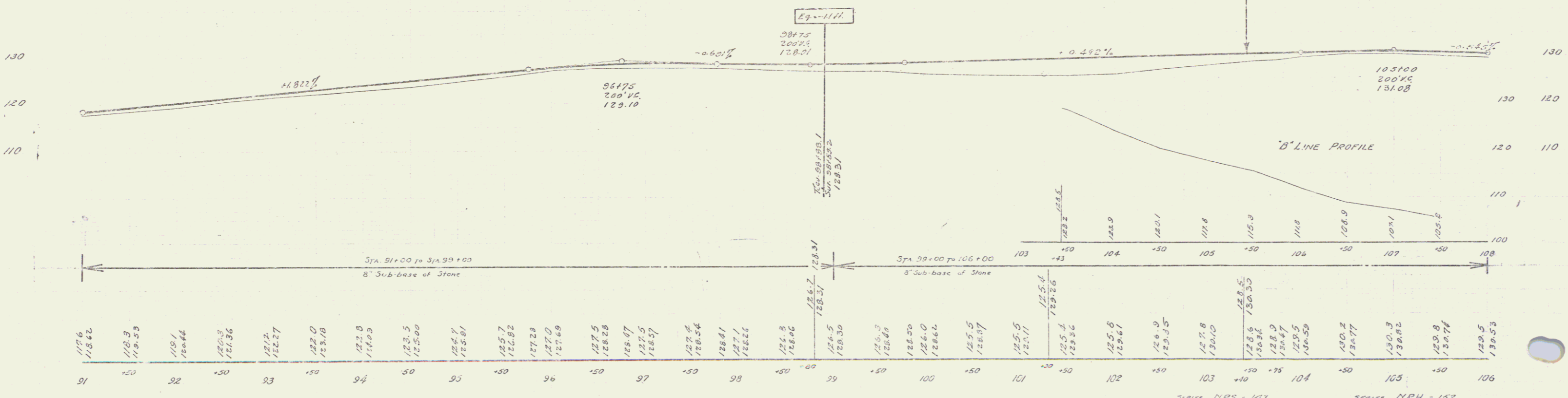
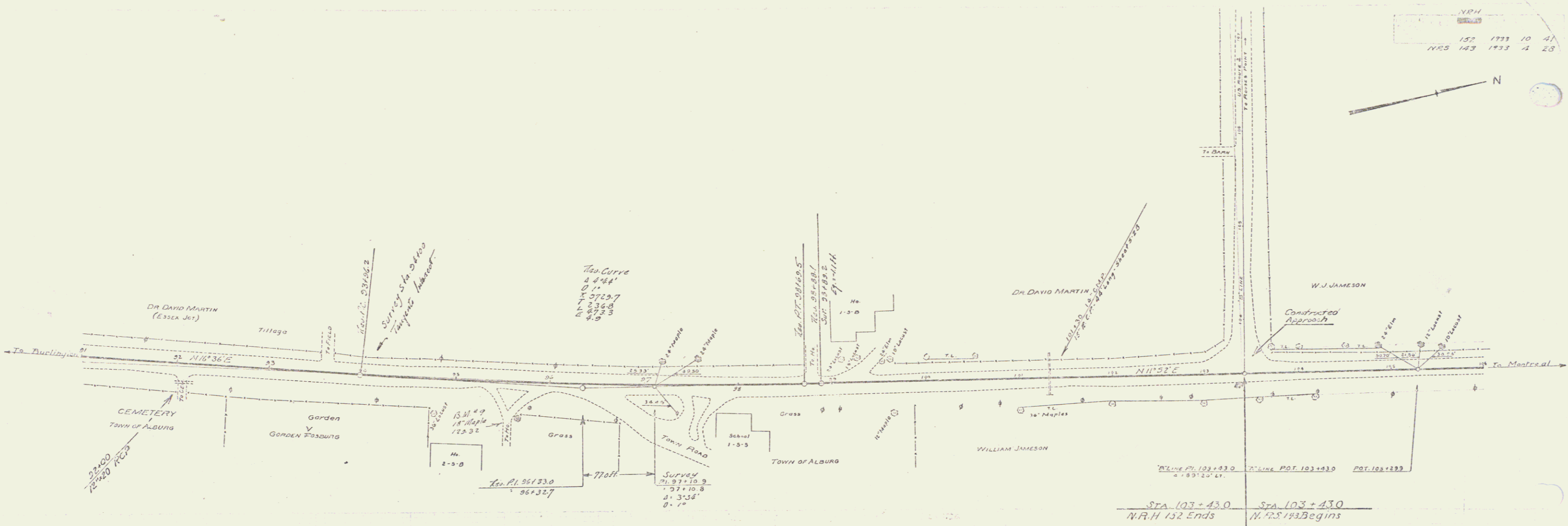


N.P.H.  
 152 1793 10 41  
 N.R.S. 143 1733 4 28



D.M. # 9 SPIKE IN ROOT OF 18" MAPLE 37' BT STA. 95+63 ELEV 129.52

SERIES N.R.S. - 143 SHEET 4 OF 28

SERIES N.P.H. - 152 SHEET 10 OF 41