

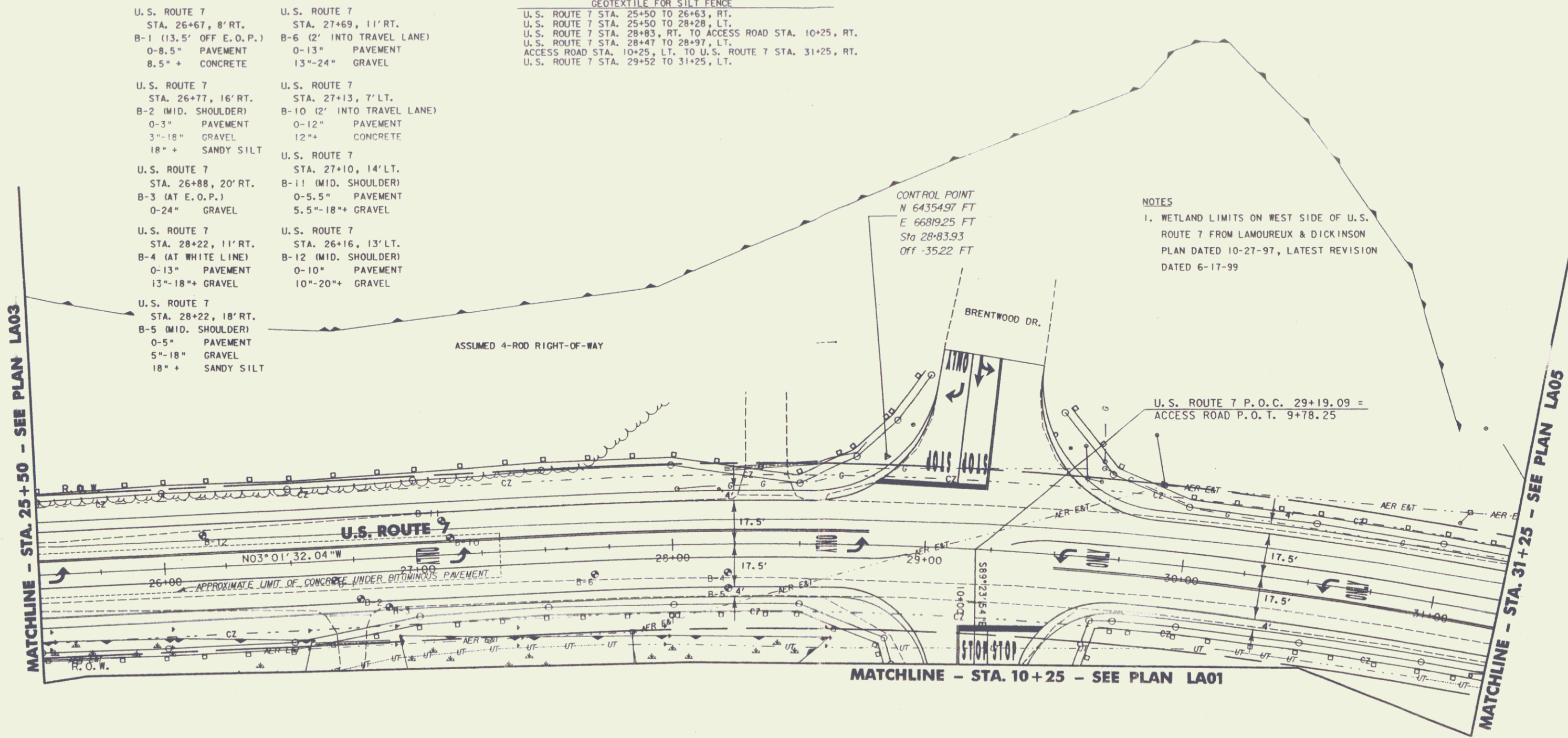
**SOIL BORING LOG SUMMARY**

BASED ON A PLAN ENTITLED "BRENTWOOD PARK" BY  
"LAMOUREUX, STONE & O'LEARY"  
DATED 3/19/97, REVISED 9/18/97

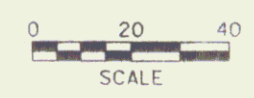
U.S. ROUTE 7 STA. 26+67, 8' RT. B-1 (13.5' OFF E.O.P.) 0-8.5" PAVEMENT 8.5" + CONCRETE	U.S. ROUTE 7 STA. 27+69, 11' RT. B-6 (2' INTO TRAVEL LANE) 0-13" PAVEMENT 13"-24" GRAVEL
U.S. ROUTE 7 STA. 26+77, 16' RT. B-2 (MID. SHOULDER) 0-3" PAVEMENT 3"-18" GRAVEL 18" + SANDY SILT	U.S. ROUTE 7 STA. 27+13, 7' LT. B-10 (2' INTO TRAVEL LANE) 0-12" PAVEMENT 12" + CONCRETE
U.S. ROUTE 7 STA. 26+88, 20' RT. B-3 (AT E.O.P.) 0-24" GRAVEL	U.S. ROUTE 7 STA. 27+10, 14' LT. B-11 (MID. SHOULDER) 0-5.5" PAVEMENT 5.5"-18" + GRAVEL
U.S. ROUTE 7 STA. 28+22, 11' RT. B-4 (AT WHITE LINE) 0-13" PAVEMENT 13"-18" + GRAVEL	U.S. ROUTE 7 STA. 26+16, 13' LT. B-12 (MID. SHOULDER) 0-10" PAVEMENT 10"-20" + GRAVEL
U.S. ROUTE 7 STA. 28+22, 18' RT. B-5 (MID. SHOULDER) 0-5" PAVEMENT 5"-18" GRAVEL 18" + SANDY SILT	

**GEOTEXTILE FOR SILT FENCE**

U.S. ROUTE 7 STA. 25+50 TO 26+63, RT.  
U.S. ROUTE 7 STA. 25+50 TO 28+28, LT.  
U.S. ROUTE 7 STA. 28+83, RT. TO ACCESS ROAD STA. 10+25, RT.  
U.S. ROUTE 7 STA. 28+47 TO 28+97, LT.  
ACCESS ROAD STA. 10+25, LT. TO U.S. ROUTE 7 STA. 31+25, RT.  
U.S. ROUTE 7 STA. 29+52 TO 31+25, LT.



**NOTES**  
1. WETLAND LIMITS ON WEST SIDE OF U.S. ROUTE 7 FROM LAMOUREUX & DICKINSON PLAN DATED 10-27-97, LATEST REVISION DATED 6-17-99



Pin 99k062

PROJECT NAME: COLCHESTER PARK-AND-RIDE	PLOT DATE: 12/31/2001
PROJECT NUMBER: CMG PARK(18)S	DRAWN BY: MAM
FILE NAME: LA04.PTF	CHECKED BY: GAE
PROJECT LEADER: WLD	SHEET 14 OF 51
DESIGNED BY: CSP	
RT.7 LAYOUT & EROSION LA04	