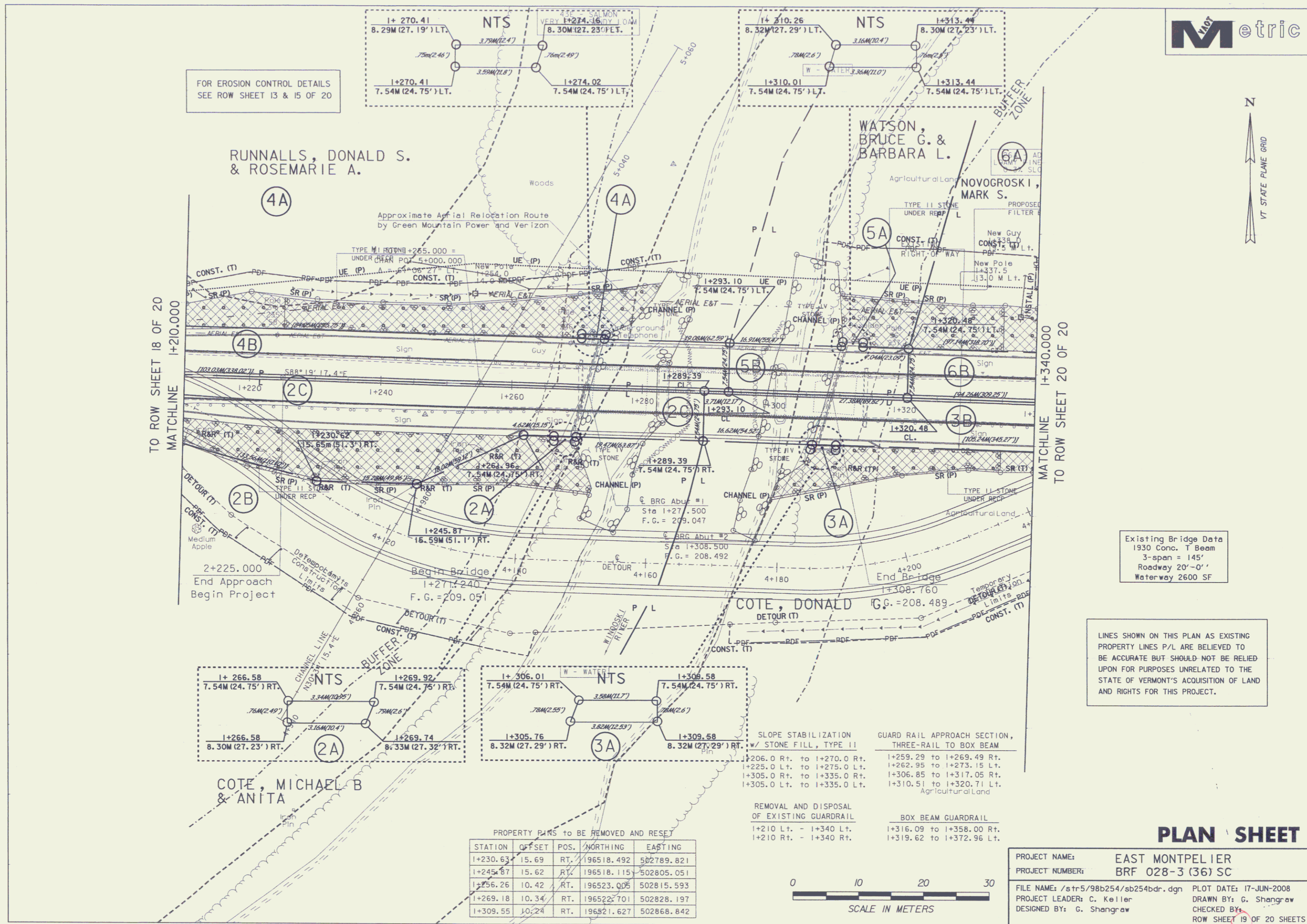




FOR EROSION CONTROL DETAILS
SEE ROW SHEET 13 & 15 OF 20

TO ROW SHEET 18 OF 20
MATCHLINE +210.000

MATCHLINE +340.000
TO ROW SHEET 20 OF 20



Existing Bridge Data
1930 Conc. T Beam
3-span = 145'
Roadway 20'-0"
Waterway 2600 SF

LINES SHOWN ON THIS PLAN AS EXISTING
PROPERTY LINES P/L ARE BELIEVED TO
BE ACCURATE BUT SHOULD NOT BE RELIED
UPON FOR PURPOSES UNRELATED TO THE
STATE OF VERMONT'S ACQUISITION OF LAND
AND RIGHTS FOR THIS PROJECT.

SLOPE STABILIZATION
w/ STONE FILL, TYPE II

GUARD RAIL APPROACH SECTION,
THREE-RAIL TO BOX BEAM

1+206.0 Rt. to 1+270.0 Rt.
1+225.0 Lt. to 1+275.0 Lt.
1+305.0 Rt. to 1+335.0 Rt.
1+305.0 Lt. to 1+335.0 Lt.

1+259.29 to 1+269.49 Rt.
1+262.95 to 1+273.15 Lt.
1+306.85 to 1+317.05 Rt.
1+310.51 to 1+320.71 Lt.

REMOVAL AND DISPOSAL
OF EXISTING GUARDRAIL

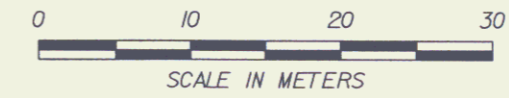
1+210 Lt. - 1+340 Lt.
1+210 Rt. - 1+340 Rt.

BOX BEAM GUARDRAIL

1+316.09 to 1+358.00 Rt.
1+319.62 to 1+372.96 Lt.

PROPERTY PLANS TO BE REMOVED AND RESET

STATION	OFFSET	POS.	NORTHING	EASTING
1+230.63	15.69	RT.	196518.492	502789.821
1+245.87	15.62	RT.	196518.115	502805.051
1+256.26	10.42	RT.	196523.006	502815.593
1+269.18	10.34	RT.	196522.701	502828.197
1+309.55	10.24	RT.	196521.627	502868.842



PLAN SHEET

PROJECT NAME: EAST MONTPELIER
PROJECT NUMBER: BRF 028-3 (36) SC

FILE NAME: /str5/98b254/sb254bdr.dgn PLOT DATE: 17-JUN-2008
PROJECT LEADER: C. Keller DRAWN BY: G. Shangraw
DESIGNED BY: G. Shangraw CHECKED BY: G. Shangraw
ROW SHEET 19 OF 20 SHEETS