

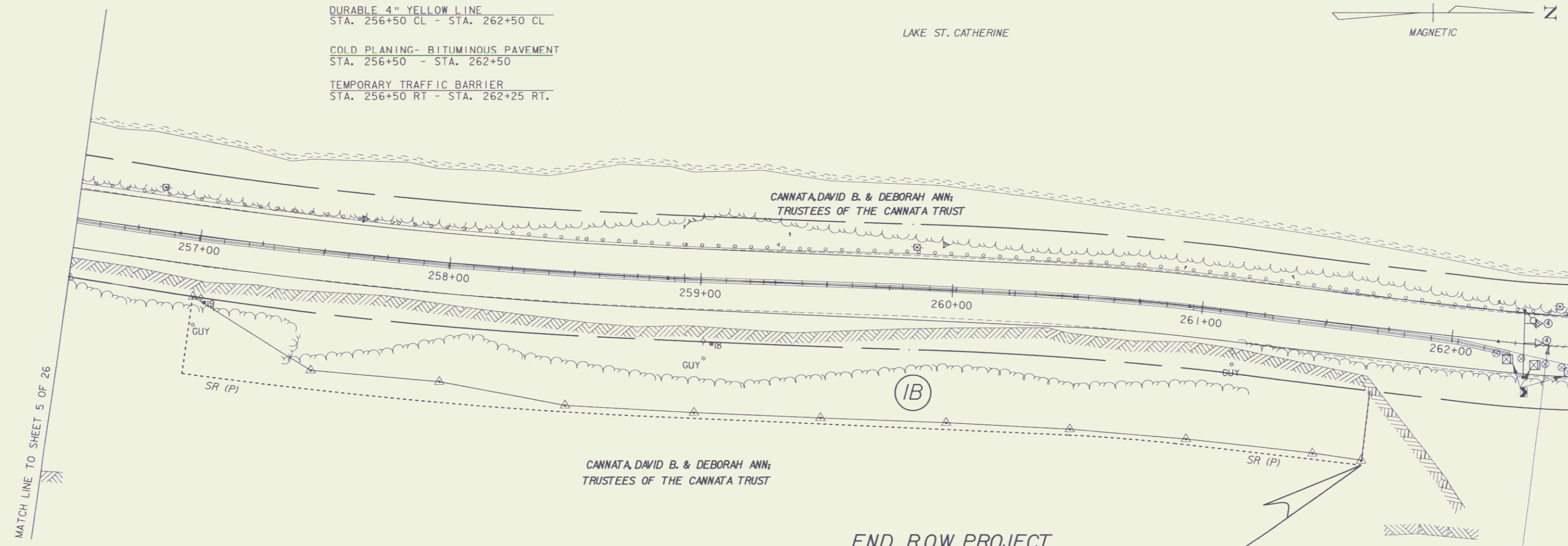
DURABLE 4" WHITE LINE
 STA. 256+50 RT - STA. 262+50 RT
 STA. 256+50 LT - STA. 262+50 LT

DURABLE 4" YELLOW LINE
 STA. 256+50 CL - STA. 262+50 CL

COLD PLANING- BITUMINOUS PAVEMENT
 STA. 256+50 - STA. 262+50

TEMPORARY TRAFFIC BARRIER
 STA. 256+50 RT - STA. 262+25 RT.

LAKE ST. CATHERINE



CANNATA, DAVID B. & DEBORAH ANN;
 TRUSTEES OF THE CANNATA TRUST

END R.O.W. PROJECT
 STP 015-2(7)S STA. 261+70 55' RT.

TEMPORARY TRAFFIC SIGNAL POLE W/ LUMINAIRE
 (CANTILEVER OR STRAIN POLE) AT CONTRACTOR'S
 OPTION, POSITION FOR MAXIMUM VISIBILITY.

THE LEDGE LINE IS
 THE MAXIMUM PROPOSED
 LIMIT AND DOES NOT
 DEPICT THE EXPECTED
 LIMITS OF LEDGE
 ACTUALLY REMOVED.

**FOR R.O.W.
 USE ONLY**

LINES SHOWN ON THIS PLAN AS EXISTING
 PROPERTY LINES (P/L) ARE BELIEVED TO
 BE ACCURATE BUT SHOULD NOT BE RELIED
 UPON FOR PURPOSES UNRELATED TO THE
 STATE OF VERMONT'S ACQUISITION OF LAND
 AND RIGHTS FOR THIS PROJECT.

LEGEND

- — TRAFFIC SIGNAL POLE WITH LUMINAIRE
- ⊗ — REFLECTORIZED PLASTIC DRUMS (SEE STD. E-106).
 DRUM SPACING (IN FEET) IS EQUAL
 TO DETOUR SPEED (IN MPH)
- — TYPE III BARRICADES SEE STD. E-107A
- ⊠ — TYPE III BARRICADES (MOD.) SEE STD. E-107A
- /// — PAVEMENT MARKING REMOVAL
- ⊗ — SIGNAL HEAD AND PHASE
- ⊙ — FLASHING BEACON

DATUM
 VERTICAL NAVD 88
 HORIZONTAL NAD 83 (96)



PROJECT: WELLS VT RTE 30	PROJECT NO.: STP 015-2(7)S
DESIGN FILE NAME: /sqdb/98bi60/dbi60bdr.dgn	PLOT DATE: 06-NOV-2003
IPARM FILE NAME: dbi60i03.i	SURVEY DATE:
SURVEYED BY:	SQUAD LEADER: DFI I A SANTA
SQUAD LEADER: DFI I A SANTA	DRAWN BY: A. JONES
R. O. W. SHEET 5 OF 5 SHEETS	3B OF 27 SHEETS

NOV 14 2007

5