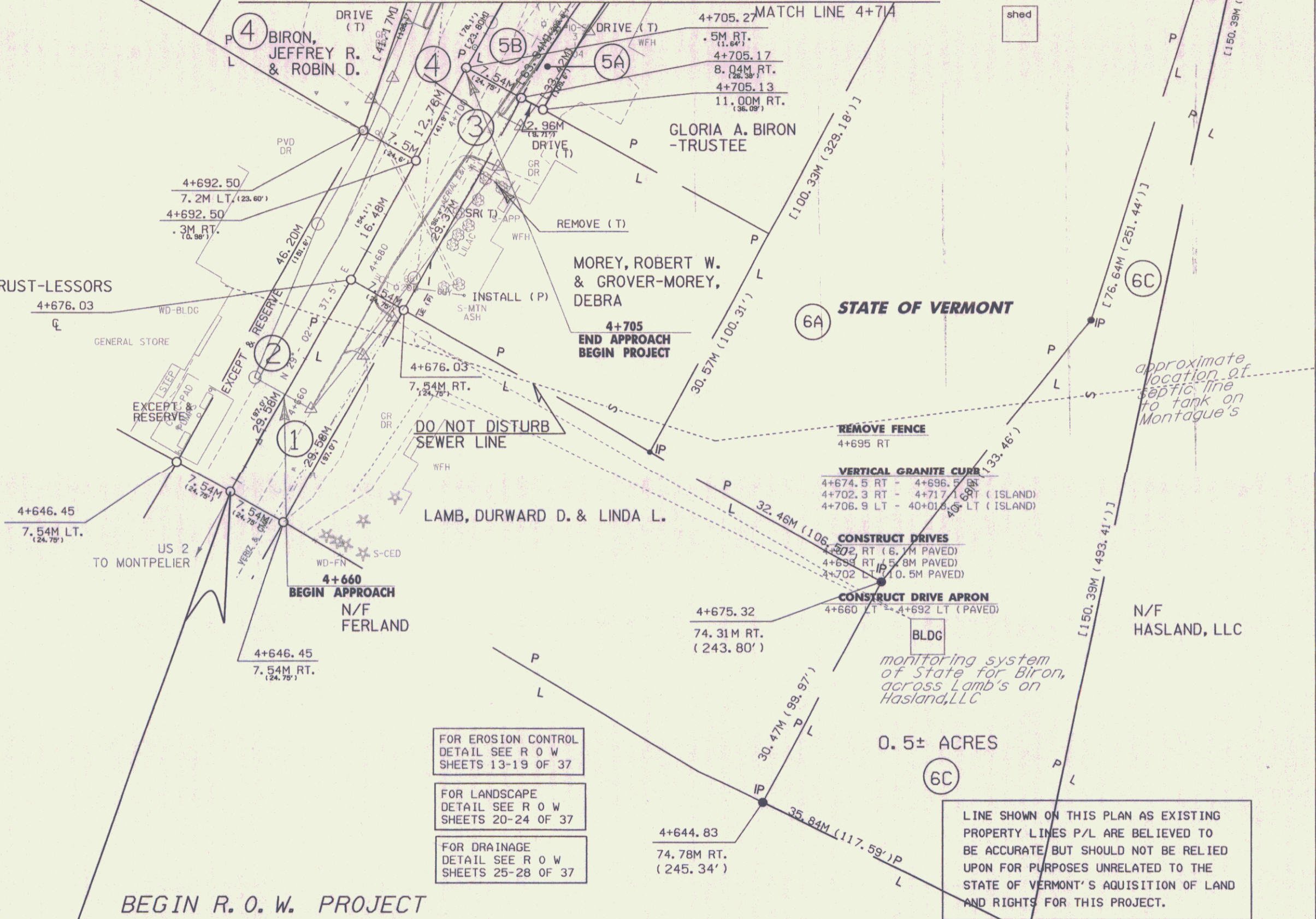


MATCH LINE TO ROW SHEET 35 OF 37

MATCH LINE 4+714

BIRON, JEFFREY R. & ROBIN D.
& GLORIA A. BIRON -TRUSTEE
of The GLORIA A. BIRON LIVING TRUST-LESSORS
AND J.R. BIRON, INC.-LESSEE

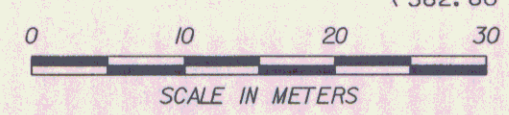


- FOR EROSION CONTROL
DETAIL SEE R O W
SHEETS 13-19 OF 37
- FOR LANDSCAPE
DETAIL SEE R O W
SHEETS 20-24 OF 37
- FOR DRAINAGE
DETAIL SEE R O W
SHEETS 25-28 OF 37

LINE SHOWN ON THIS PLAN AS EXISTING
PROPERTY LINES P/L ARE BELIEVED TO
BE ACCURATE BUT SHOULD NOT BE RELIED
UPON FOR PURPOSES UNRELATED TO THE
STATE OF VERMONT'S ACQUISITION OF LAND
AND RIGHTS FOR THIS PROJECT.

BEGIN R.O.W. PROJECT
STPG 028-3(35) S
STA. 4+646.45 CL

DATUM	
VERTICAL	NAVD 88
HORIZONTAL	NAD 83(992)



ROADWAY PLAN LAYOUT 1	
PROJECT: EAST MONTPELIER	PROJECT NO. 1: STPG 028-3(35)S
DESIGN FILE NAME: /sqda/98b028/db028...bdr.nul,top...dgn	PLOT DATE: 15-SEP-2009
IPARM FILE NAME: db028i01	SURVEY DATE: 8/98
SURVEYED BY: jfg	DRAWN BY: jfg
SQUAD LEADER: jls	ROW SHEET 34 OF 37