

**PROJECT DEMARCATION FENCE (METERS)**

2+495.079 RT ~ 2+534.433 RT	= 63.6 m
2+500.000 LT ~ 2+531.790 LT	= 38.1 m
2+539.580 LT ~ 40+030.130 LT	= 34.9 m
40+034.230 LT ~ 40+052.020 LT	= 18.9 m
40+052.091 LT ~ 40+063.408 LT	= 11.4 m
40+026.777 RT ~ 2+605.014 LT	= 76.1 m
40+063.669 RT ~ 2+612.745 LT	= 66.1 m
2+613.301 LT ~ 2+660.000 LT	= 67.1 m
50+004.924 RT ~ 50+055.080 RT	= 58.2 m
50+052.648 LT ~ 2+660.000 RT	= 58.2 m

**GEOTEXTILE FOR SILT FENCE**

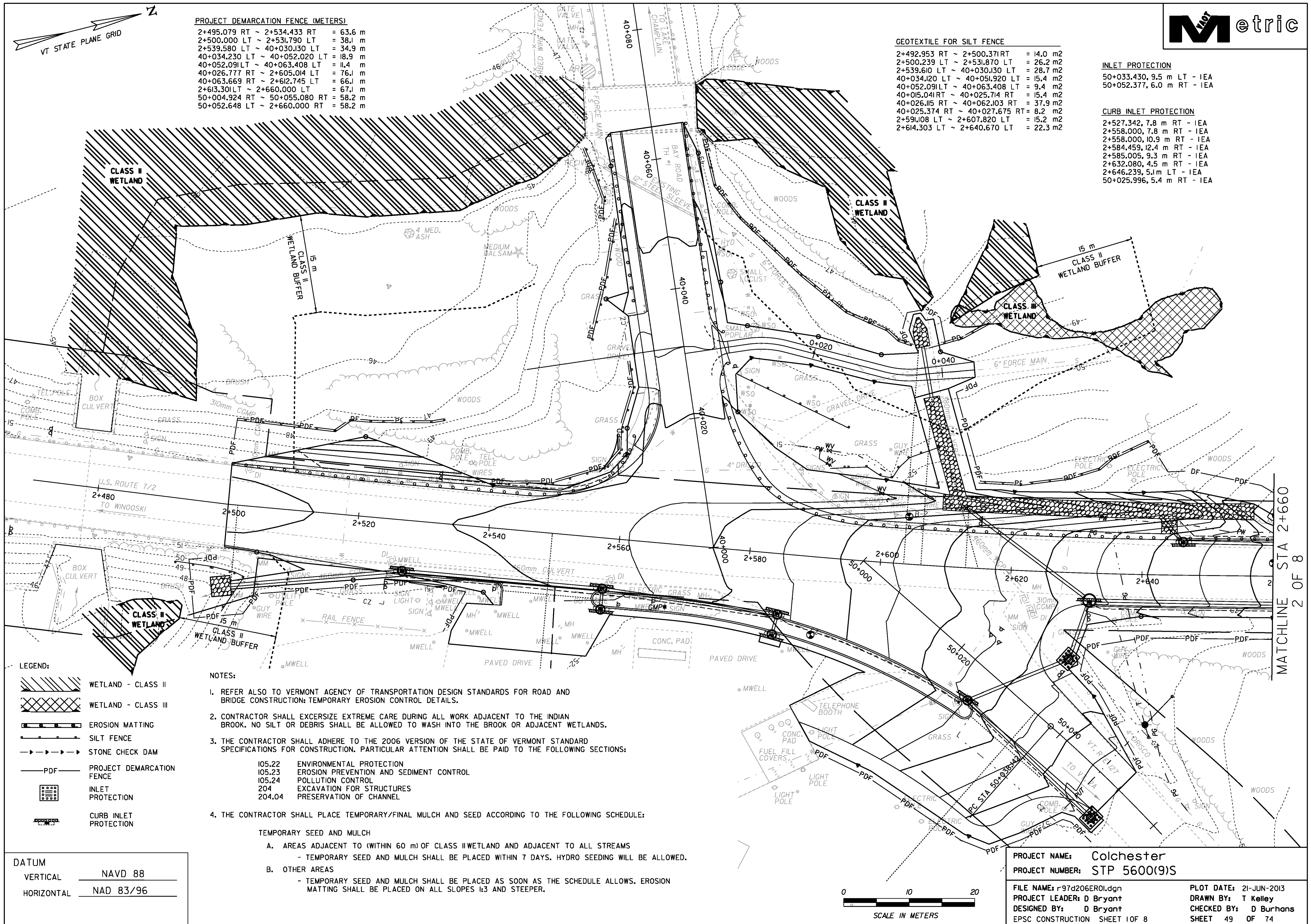
2+492.953 RT ~ 2+500.371 RT	= 14.0 m <sup>2</sup>
2+500.239 LT ~ 2+531.870 LT	= 26.2 m <sup>2</sup>
2+539.610 LT ~ 40+030.130 LT	= 28.7 m <sup>2</sup>
40+034.120 LT ~ 40+051.920 LT	= 15.4 m <sup>2</sup>
40+052.091 LT ~ 40+063.408 LT	= 9.4 m <sup>2</sup>
40+015.041 RT ~ 40+025.714 RT	= 15.4 m <sup>2</sup>
40+026.115 RT ~ 40+062.103 RT	= 37.9 m <sup>2</sup>
40+025.374 RT ~ 40+027.675 RT	= 8.2 m <sup>2</sup>
2+591.108 LT ~ 2+607.820 LT	= 15.2 m <sup>2</sup>
2+614.303 LT ~ 2+640.670 LT	= 22.3 m <sup>2</sup>

**INLET PROTECTION**

50+033.430, 9.5 m LT - IEA
50+052.377, 6.0 m RT - IEA

**CURB INLET PROTECTION**

2+527.342, 7.8 m RT - IEA
2+558.000, 7.8 m RT - IEA
2+558.000, 10.9 m RT - IEA
2+584.459, 12.4 m RT - IEA
2+585.005, 9.3 m RT - IEA
2+632.080, 4.5 m RT - IEA
2+646.239, 5.1 m LT - IEA
50+025.996, 5.4 m RT - IEA



**LEGEND:**

- WETLAND - CLASS II
- WETLAND - CLASS III
- EROSION MATTING
- SILT FENCE
- STONE CHECK DAM
- PROJECT DEMARCATION FENCE
- INLET PROTECTION
- CURB INLET PROTECTION

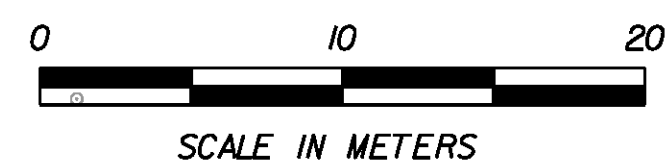
**NOTES:**

1. REFER ALSO TO VERMONT AGENCY OF TRANSPORTATION DESIGN STANDARDS FOR ROAD AND BRIDGE CONSTRUCTION; TEMPORARY EROSION CONTROL DETAILS.
2. CONTRACTOR SHALL EXERCISE EXTREME CARE DURING ALL WORK ADJACENT TO THE INDIAN BROOK. NO SILT OR DEBRIS SHALL BE ALLOWED TO WASH INTO THE BROOK OR ADJACENT WETLANDS.
3. THE CONTRACTOR SHALL ADHERE TO THE 2006 VERSION OF THE STATE OF VERMONT STANDARD SPECIFICATIONS FOR CONSTRUCTION. PARTICULAR ATTENTION SHALL BE PAID TO THE FOLLOWING SECTIONS:
 

105.22	ENVIRONMENTAL PROTECTION
105.23	EROSION PREVENTION AND SEDIMENT CONTROL
105.24	POLLUTION CONTROL
204	EXCAVATION FOR STRUCTURES
204.04	PRESERVATION OF CHANNEL
4. THE CONTRACTOR SHALL PLACE TEMPORARY/FINAL MULCH AND SEED ACCORDING TO THE FOLLOWING SCHEDULE:
 

<b>TEMPORARY SEED AND MULCH</b>	
A.	AREAS ADJACENT TO (WITHIN 60 m) OF CLASS II WETLAND AND ADJACENT TO ALL STREAMS - TEMPORARY SEED AND MULCH SHALL BE PLACED WITHIN 7 DAYS. HYDRO SEEDING WILL BE ALLOWED.
B.	OTHER AREAS - TEMPORARY SEED AND MULCH SHALL BE PLACED AS SOON AS THE SCHEDULE ALLOWS. EROSION MATTING SHALL BE PLACED ON ALL SLOPES 1:3 AND STEEPER.

<b>DATUM</b>	
VERTICAL	NAVD 88
HORIZONTAL	NAD 83/96



PROJECT NAME: Colchester  
PROJECT NUMBER: STP 5600(9)S

FILE NAME: r97d206ER01.dgn  
PROJECT LEADER: D Bryant  
DESIGNED BY: D Bryant  
EPSC CONSTRUCTION SHEET 1 OF 8

PLOT DATE: 21-JUN-2013  
DRAWN BY: T Kelley  
CHECKED BY: D Burhans  
SHEET 49 OF 74