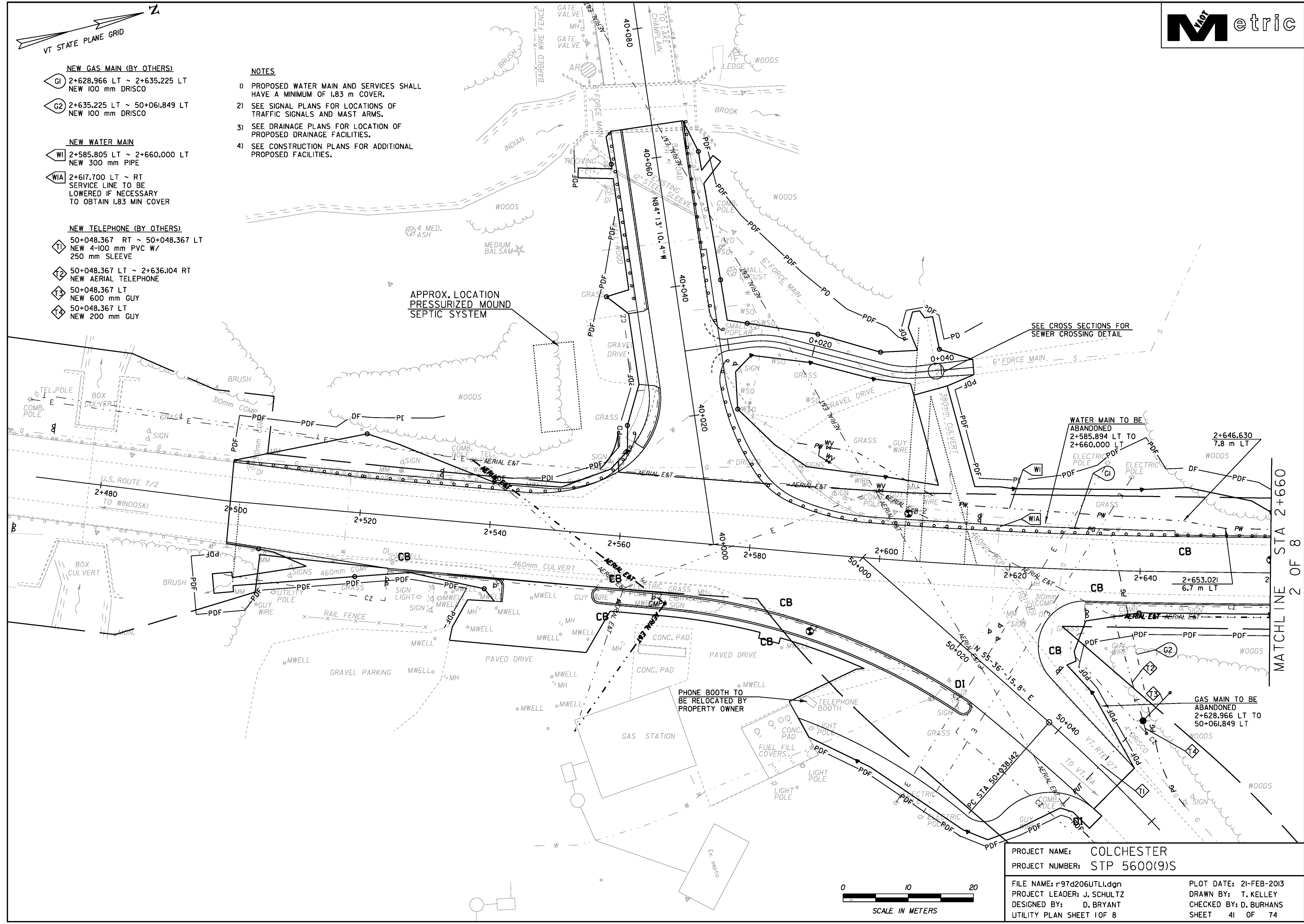


- NEW GAS MAIN (BY OTHERS)**
- G1 2+628.966 LT ~ 2+635.225 LT
NEW 100 mm DRISCO
 - G2 2+635.225 LT ~ 50+061.849 LT
NEW 100 mm DRISCO

- NEW WATER MAIN**
- WI 2+585.805 LT ~ 2+660.000 LT
NEW 300 mm PIPE
 - WIA 2+617.700 LT ~ RT
SERVICE LINE TO BE
LOWERED IF NECESSARY
TO OBTAIN 1.83 MIN COVER

- NEW TELEPHONE (BY OTHERS)**
- T1 50+048.367 RT ~ 50+048.367 LT
NEW 4-100 mm PVC W/
250 mm SLEEVE
 - T2 50+048.367 LT ~ 2+636.104 RT
NEW AERIAL TELEPHONE
 - T3 50+048.367 LT
NEW 600 mm GUY
 - T4 50+048.367 LT
NEW 200 mm GUY

- NOTES**
- 1) PROPOSED WATER MAIN AND SERVICES SHALL HAVE A MINIMUM OF 1.83 m COVER.
 - 2) SEE SIGNAL PLANS FOR LOCATIONS OF TRAFFIC SIGNALS AND MAST ARMS.
 - 3) SEE DRAINAGE PLANS FOR LOCATION OF PROPOSED DRAINAGE FACILITIES.
 - 4) SEE CONSTRUCTION PLANS FOR ADDITIONAL PROPOSED FACILITIES.



APPROX. LOCATION
PRESSURIZED MOUND
SEPTIC SYSTEM

SEE CROSS SECTIONS FOR
SEWER CROSSING DETAIL

WATER MAIN TO BE
ABANDONED
2+585.894 LT TO
2+660.000 LT
7.8 m LT

GAS MAIN TO BE
ABANDONED
2+628.966 LT TO
50+061.849 LT

MATCHLINE STA 2+660
2 OF 8

PROJECT NAME:	COLCHESTER	FILE NAME:	r97d206UTLI.dgn	PLOT DATE:	21-FEB-2013
PROJECT NUMBER:	STP 5600(9)S	PROJECT LEADER:	J. SCHULTZ	DRAWN BY:	T. KELLEY
		DESIGNED BY:	D. BRYANT	CHECKED BY:	D. BURHANS
		UTILITY PLAN SHEET	10F 8		SHEET 41 OF 74