

NEW DRAINAGE

- 1 2+558.042 RT ~ 2+558.042 RT
NEW 450 mm x 2.101 m OPTION AA PIPE
INV. IN = 49.124; INV. OUT = 49.111
- 2A 2+584.550 RT ~ 2+584.914 RT
NEW 450 mm x 2.101 m
OPTION AA PIPE
INV. IN = 49.375; INV. OUT = 49.251
- 2B 2+558.552 RT ~ 2+584.494 RT
NEW 450 mm x 25.983 m OPTION AA PIPE
INV. IN = 49.168; INV. OUT = 49.111
- 3 2+527.854 RT ~ 2+557.530 RT
NEW 450 mm x 29.676 m OPTION AA PIPE
INV. IN = 49.036; INV. OUT = 48.885
- 4 2+501.469 RT ~ 2+526.839 RT
NEW 450 mm x 25.754 m OPTION AA PIPE
INV. IN = 48.725; INV. OUT = 48.600
- 5 50+026.507 RT ~ 50+051.852 RT
NEW 450 mm x 25.012 m OPTION AA PIPE
INV. IN = 53.490; INV. OUT = 53.274
- 6 50+026.244 RT ~ 50+033.201 LT
NEW 450 mm x 15.633 m OPTION AA PIPE
INV. IN = 53.199; INV. OUT = 53.060
- 7 2+631.831 RT ~ 50+033.243 LT
NEW 450 mm x 8.168 m OPTION AA PIPE
INV. IN = 52.985; INV. OUT = 52.910
- 13 2+632.911 RT ~ 2+699.489 RT
NEW 450 mm x 66.658 m OPTION AA PIPE
INV. IN = 58.597; INV. OUT = 52.900

EXISTING DRAINAGE

- EX1 2+478.000 LT ~ 2+478.000 RT
EXISTING BOX CULVERT - RETAIN
- EX2 2+496.000 LT ~ 2+503.000 LT
EXISTING 310 mm PIPE - RETAIN
- EX3 2+496.000 LT ~ 2+503.000 LT
EXISTING 310 mm PIPE AND DI - RETAIN
- EX4 2+501.000 RT ~ 2+525.000 RT
EXISTING 460 mm PIPE AND DI - REMOVE
- EX5 2+526.000 RT ~ 2+559.000 RT
EXISTING 460 mm PIPE AND DI - REMOVE
- EX6 2+604.000 LT ~ 2+610.000 LT
EXISTING 380 mm PIPE - REMOVE
STA. 0+38.480, 8.200 LT
PLUG & ABANDON REMAINING
3.100 m OF EXIST. PIPE
- EX7 2+611.000 LT ~ 2+622.000 RT
EXISTING 460 mm PIPE AND MH - REMOVE
- EX8 2+622.000 RT ~ 2+623.000 RT
EXISTING 310 mm PIPE AND DI - REMOVE
- EX9 2+623.000 RT ~ 2+623.000 RT
EXISTING 310 mm PIPE AND DI - REMOVE
- EX10 50+025.000 RT
EXISTING DI - REMOVE
- EX11 40+050.000 RT ~ 40+060.000 LT
EXISTING BOX CULVERT - RETAIN

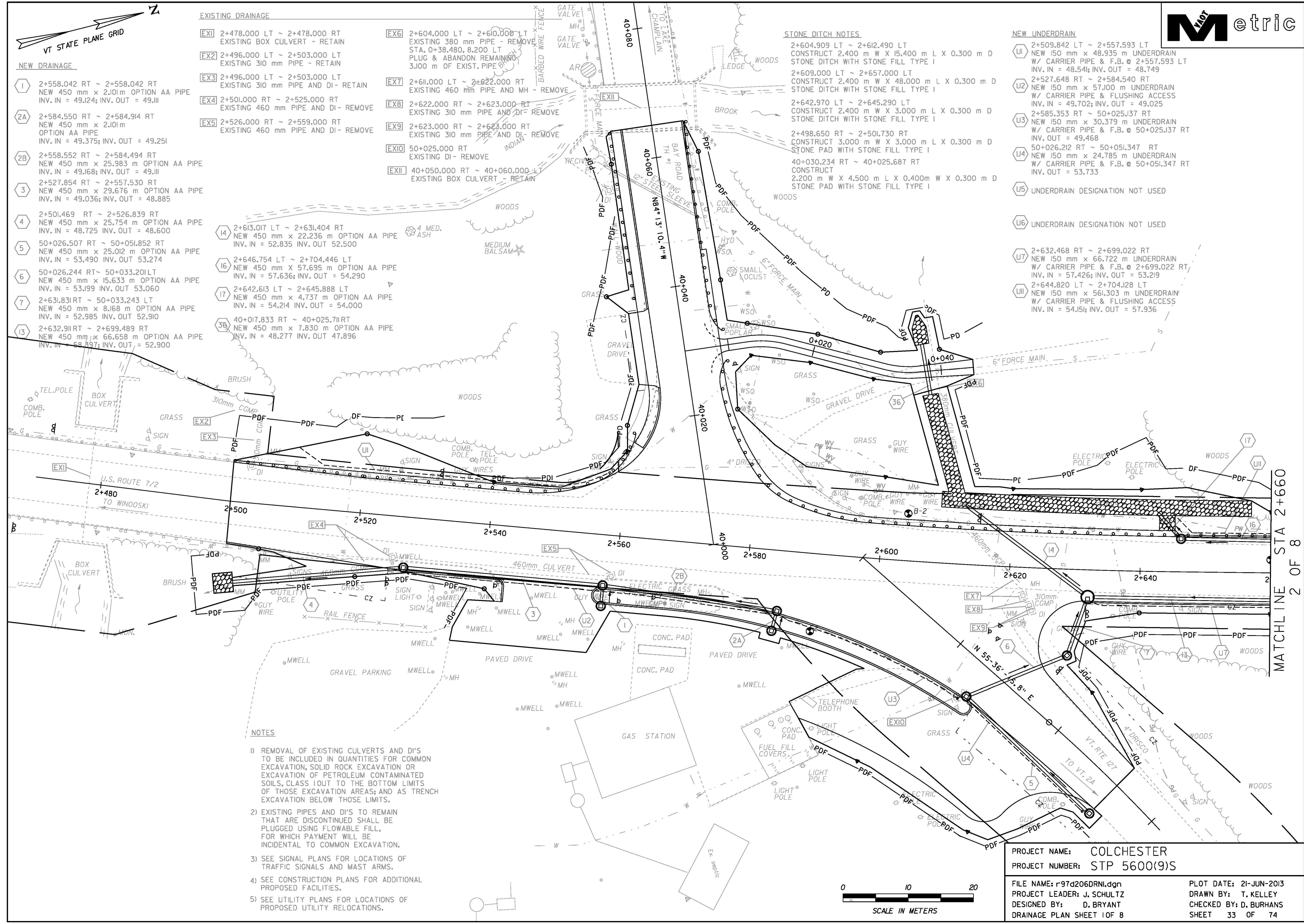
- 14 2+613.017 LT ~ 2+631.404 RT
NEW 450 mm x 22.236 m OPTION AA PIPE
INV. IN = 52.835; INV. OUT = 52.500
- 16 2+646.754 LT ~ 2+704.446 LT
NEW 450 mm x 57.695 m OPTION AA PIPE
INV. IN = 57.636; INV. OUT = 54.290
- 17 2+642.613 LT ~ 2+645.888 LT
NEW 450 mm x 4.737 m OPTION AA PIPE
INV. IN = 54.214; INV. OUT = 54.000
- 36 40+017.833 RT ~ 40+025.711 RT
NEW 450 mm x 7.830 m OPTION AA PIPE
INV. IN = 48.277; INV. OUT = 47.896

STONE DITCH NOTES

- 2+604.909 LT ~ 2+612.490 LT
CONSTRUCT 2,400 m W X 15,400 m L X 0.300 m D
STONE DITCH WITH STONE FILL TYPE I
- 2+609.000 LT ~ 2+657.000 LT
CONSTRUCT 2,400 m W X 48,000 m L X 0.300 m D
STONE DITCH WITH STONE FILL TYPE I
- 2+642.970 LT ~ 2+645.290 LT
CONSTRUCT 2,400 m W X 3,000 m L X 0.300 m D
STONE DITCH WITH STONE FILL TYPE I
- 2+498.650 RT ~ 2+501.730 RT
CONSTRUCT 3,000 m W X 3,000 m L X 0.300 m D
STONE PAD WITH STONE FILL TYPE I
- 40+030.234 RT ~ 40+025.687 RT
CONSTRUCT
2,200 m W X 4,500 m L X 0.400 m W X 0.300 m D
STONE PAD WITH STONE FILL TYPE I

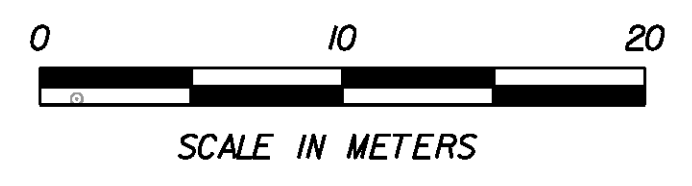
NEW UNDERDRAIN

- U1 2+509.842 LT ~ 2+557.593 LT
NEW 150 mm x 48,935 m UNDERDRAIN
W/ CARRIER PIPE & F.B. @ 2+557.593 LT
INV. IN = 48.541; INV. OUT = 48.749
- U2 2+527.648 RT ~ 2+584.540 RT
NEW 150 mm x 57,100 m UNDERDRAIN
W/ CARRIER PIPE & FLUSHING ACCESS
INV. IN = 49.702; INV. OUT = 49.025
- U3 2+585.353 RT ~ 50+025.137 RT
NEW 150 mm x 30,379 m UNDERDRAIN
W/ CARRIER PIPE & F.B. @ 50+025.137 RT
INV. OUT = 49.468
- U4 50+026.212 RT ~ 50+051.347 RT
NEW 150 mm x 24,785 m UNDERDRAIN
W/ CARRIER PIPE & F.B. @ 50+051.347 RT
INV. OUT = 53.733
- U5 UNDERDRAIN DESIGNATION NOT USED
- U6 UNDERDRAIN DESIGNATION NOT USED
- U7 2+632.468 RT ~ 2+699.022 RT
NEW 150 mm x 66,722 m UNDERDRAIN
W/ CARRIER PIPE & F.B. @ 2+699.022 RT
INV. IN = 57.426; INV. OUT = 53.219
- U11 2+644.820 LT ~ 2+704.128 LT
NEW 150 mm x 56,303 m UNDERDRAIN
W/ CARRIER PIPE & FLUSHING ACCESS
INV. IN = 54.151; INV. OUT = 57.936



NOTES

- 1) REMOVAL OF EXISTING CULVERTS AND DI'S TO BE INCLUDED IN QUANTITIES FOR COMMON EXCAVATION, SOLID ROCK EXCAVATION OR EXCAVATION OF PETROLEUM CONTAMINATED SOILS, CLASS I/OT TO THE BOTTOM LIMITS OF THOSE EXCAVATION AREAS; AND AS TRENCH EXCAVATION BELOW THOSE LIMITS.
- 2) EXISTING PIPES AND DI'S TO REMAIN THAT ARE DISCONTINUED SHALL BE PLUGGED USING FLOWABLE FILL, FOR WHICH PAYMENT WILL BE INCIDENTAL TO COMMON EXCAVATION.
- 3) SEE SIGNAL PLANS FOR LOCATIONS OF TRAFFIC SIGNALS AND MAST ARMS.
- 4) SEE CONSTRUCTION PLANS FOR ADDITIONAL PROPOSED FACILITIES.
- 5) SEE UTILITY PLANS FOR LOCATIONS OF PROPOSED UTILITY RELOCATIONS.



PROJECT NAME: COLCHESTER
 PROJECT NUMBER: STP 5600(9)S
 FILE NAME: r97d206DRNI.dgn
 PROJECT LEADER: J. SCHULTZ
 DESIGNED BY: D. BRYANT
 DRAINAGE PLAN SHEET 1 OF 8

PLOT DATE: 21-JUN-2013
 DRAWN BY: T. KELLEY
 CHECKED BY: D. BURHANS
 SHEET 33 OF 74

MATCHLINE STA 2+660
2 OF 8