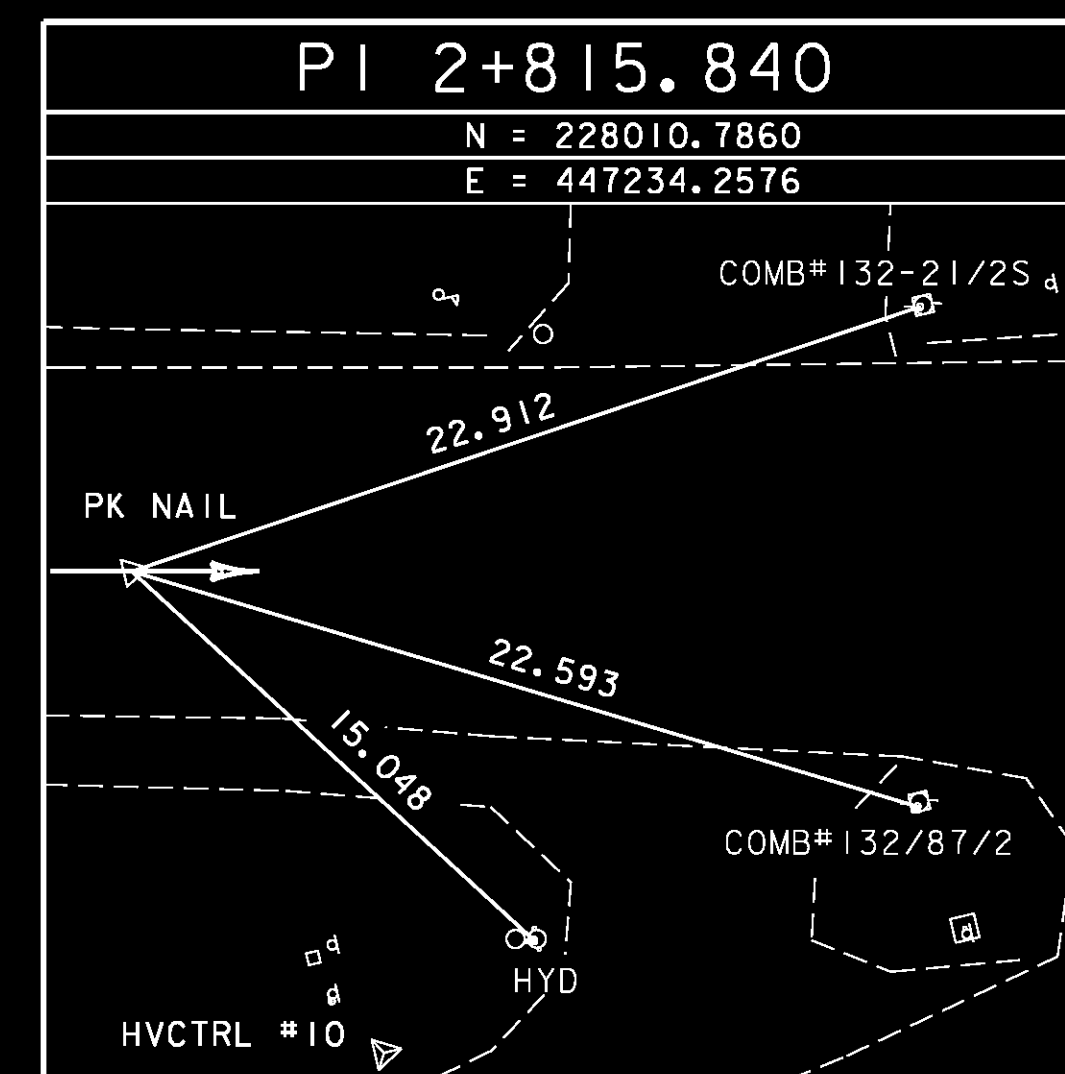
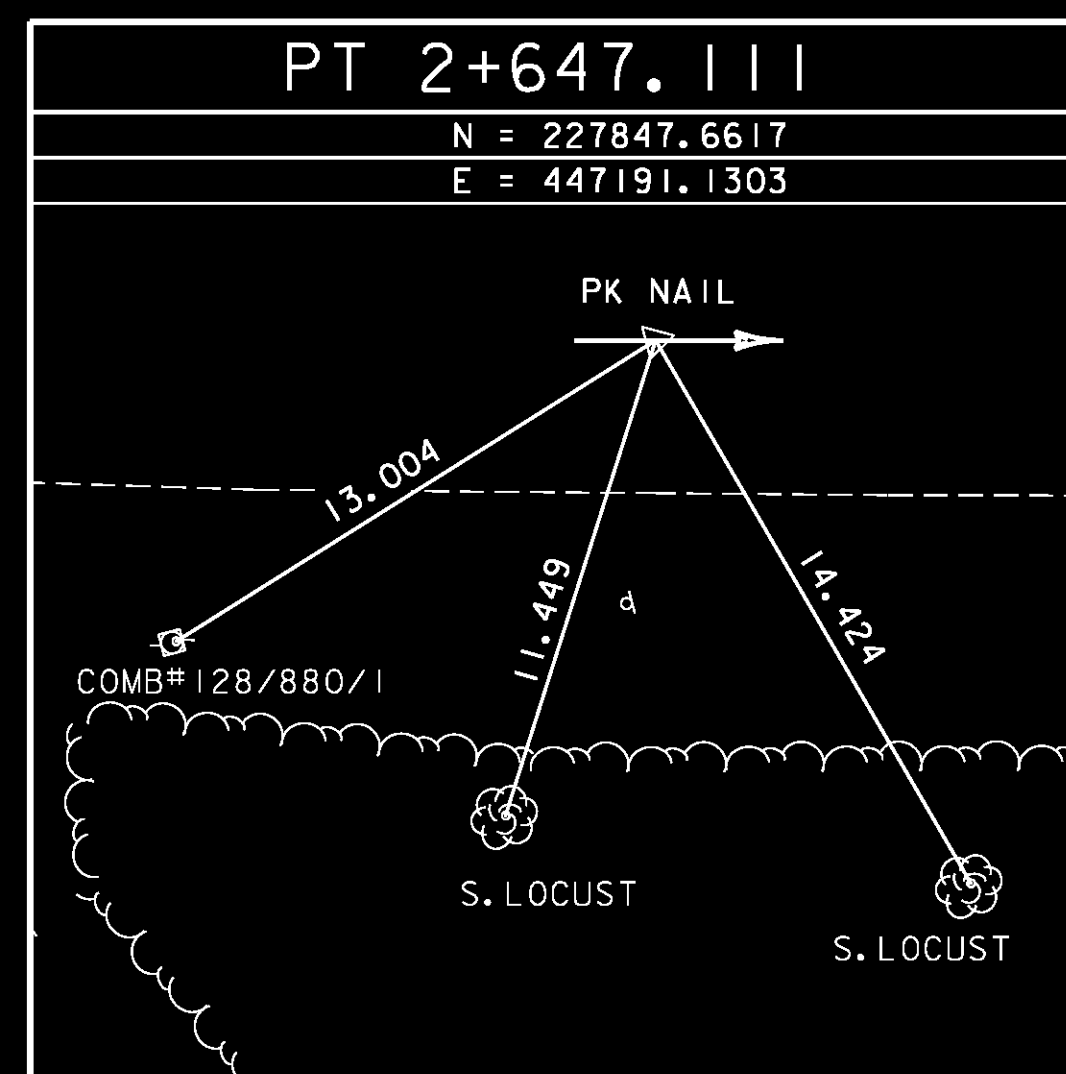
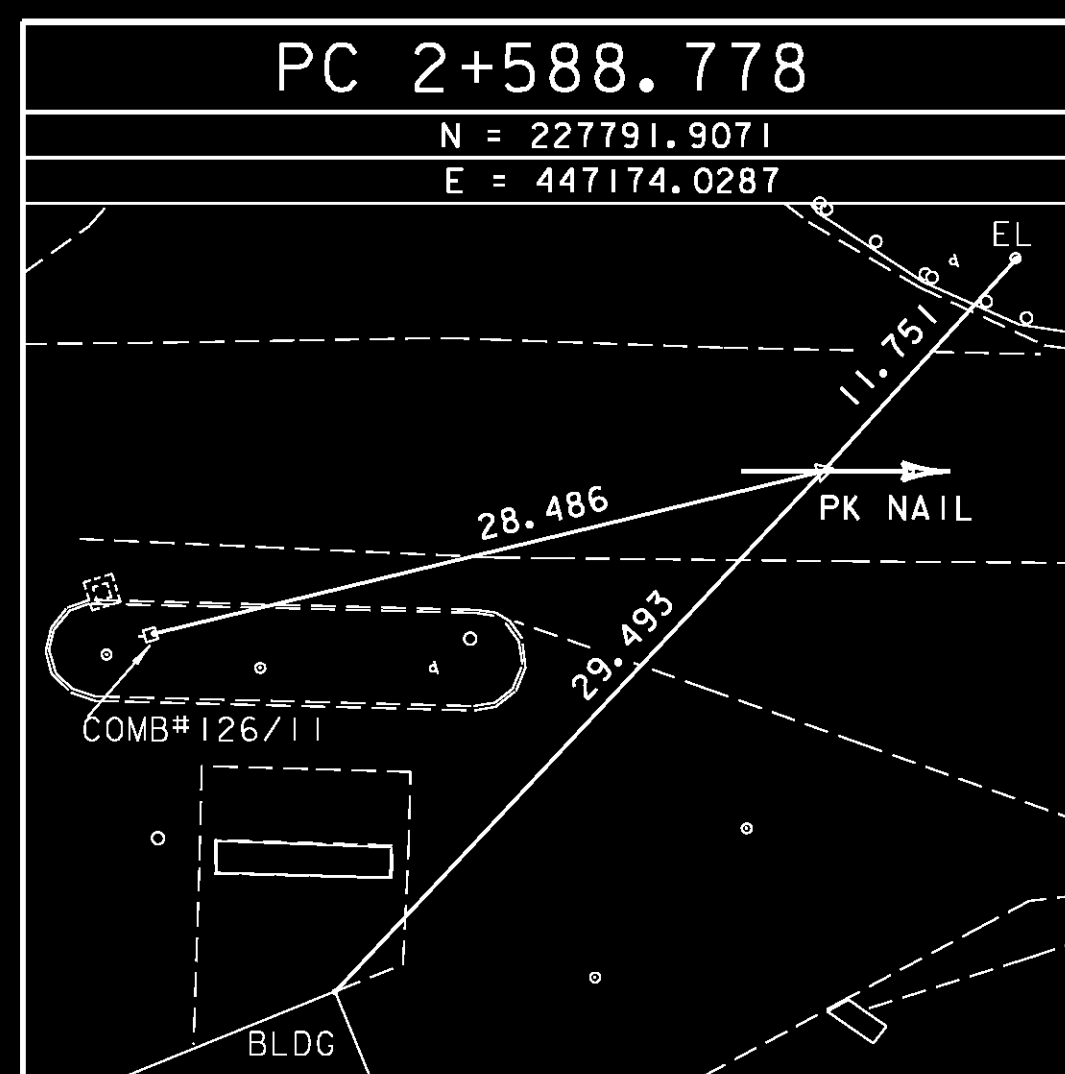
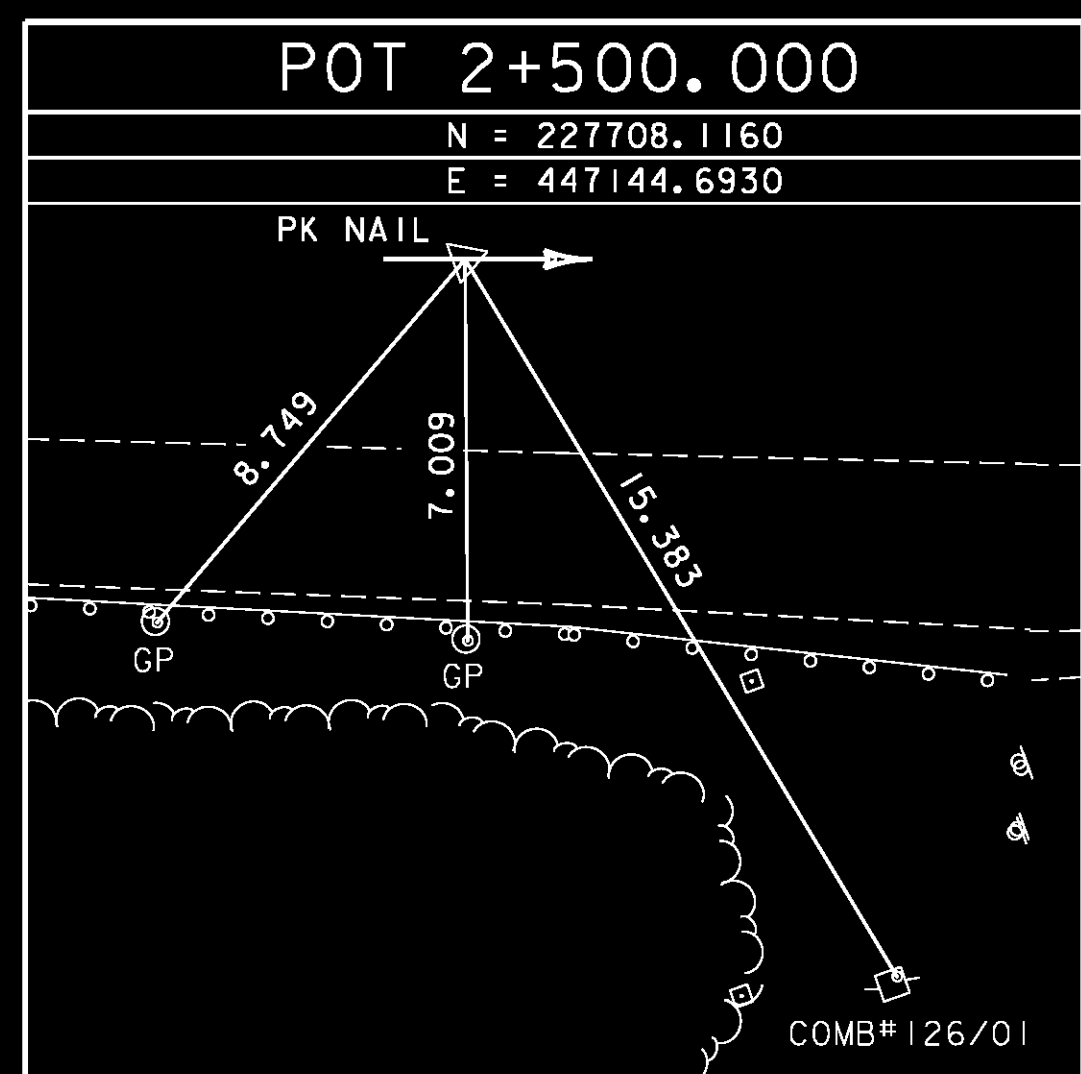


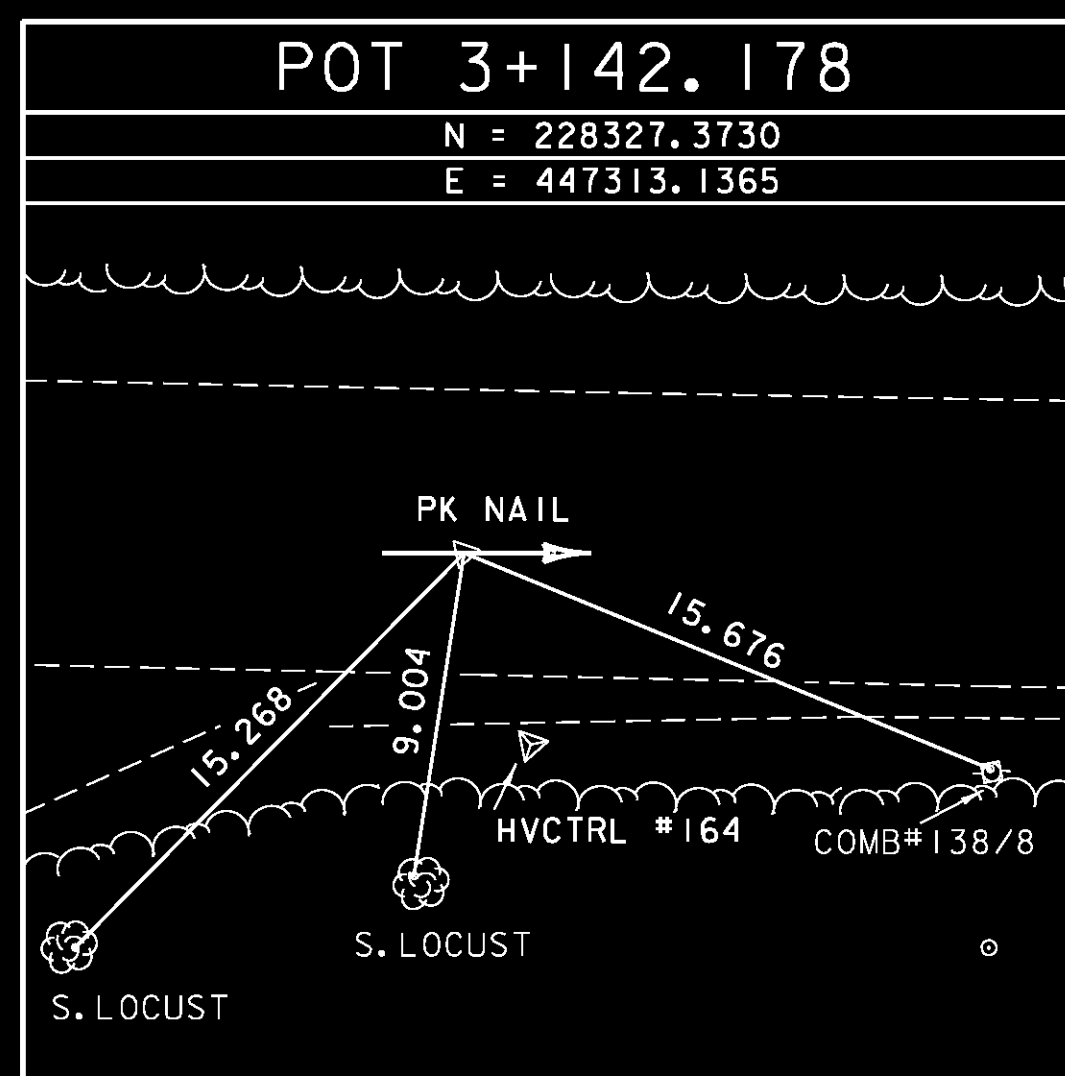
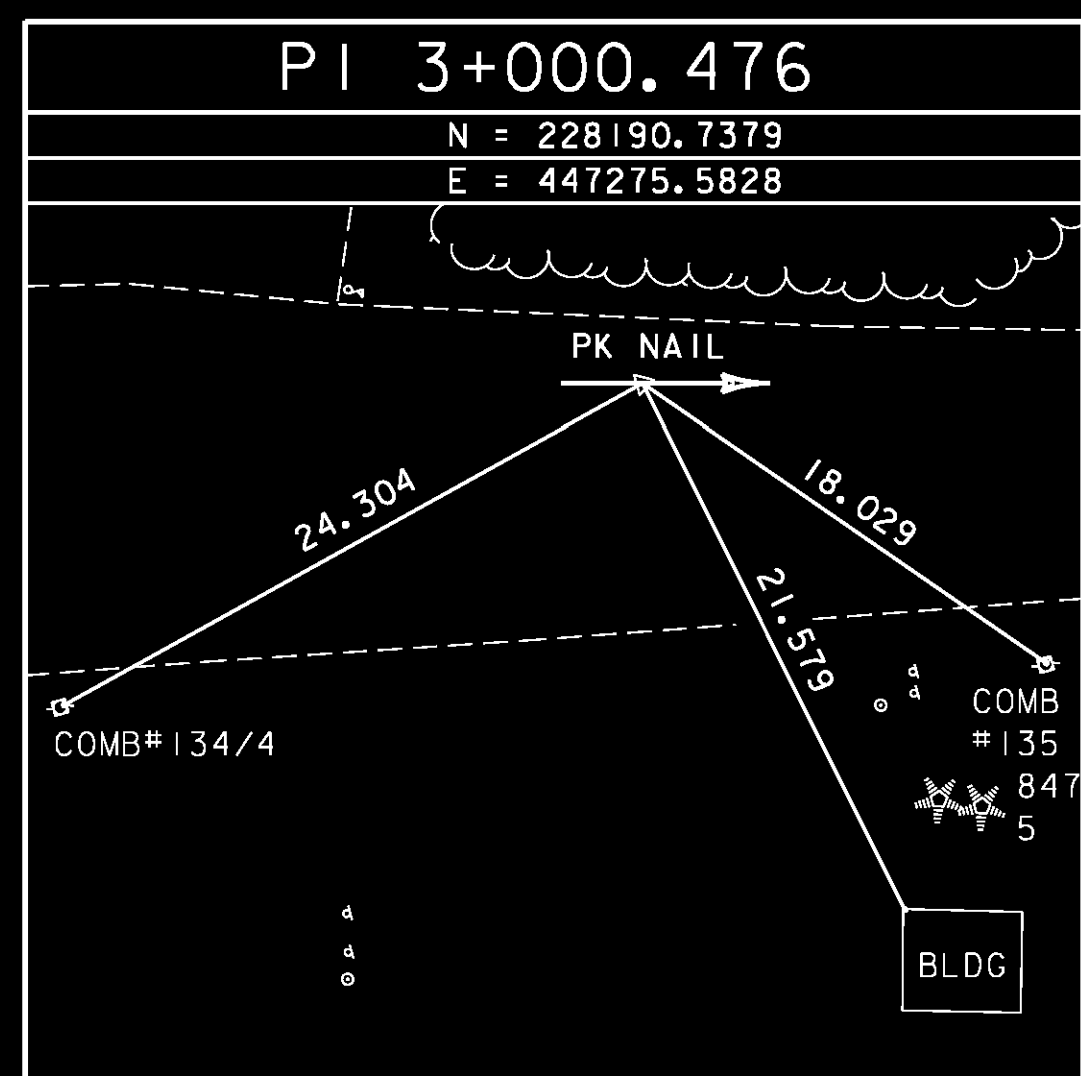
GPS CONTROL POINTS

ALIGNMENT TIES

ALIGNMENT TIES



\* ALIGNMENT STAKED ON JANUARY 25, 2002 BY R.GILMAN, P.WINTERS & J.HULETT



\* ALIGNMENT STAKED ON JANUARY 25, 2002 BY R.GILMAN, P.WINTERS & J.HULETT  
 \*\* ALL TRAVERSE POINTS ARE REBAR DRIVEN FLUSH TO THE GROUND UNLESS OTHERWISE NOTED.

<b>DATUM</b>	
VERTICAL	NAVD 88
HORIZONTAL	NAD 83/96

PROJECT NAME:	COLCHESTER	PLOT DATE:	21-FEB-2013
PROJECT NUMBER:	STP 5600(9)S	DRAWN BY:	J. HULETT
FILE NAME:	r97d206TIE.dgn	DESIGNED BY:	D. BRYANT
		CHECKED BY:	P. HODGE
		TIE SHEET	2 OF 2
		SHEET	20 OF 74