

GPS CONTROL POINTS

HVCTRL # 1

STANDARD DISK STAMPED

Burnham Library

N = 227307.3710
E = 44813.5680
ELEV. = 82.666

DESCRIBED BY VERMONT AGENCY OF TRANSPORTATION 1996 (CHR)
GENERAL LOCATION, COLCHESTER, VT. TO REACH FROM THE INTERSECTION OF VT ROUTE 2A AND U.S. ROUTES 2+7 JUST WEST OF COLCHESTER VILLAGE GO SOUTHEAST ALONG VT ROUTE 2A FOR 0.9 MI (1.4 KM) TO THE MARK ON THE RIGHT, IMMEDIATELY NORTHWEST OF A PAVED DRIVE TO THE BURNHAM MEMORIAL LIBRARY AND COLCHESTER UNITED CHURCH. THE MARK IS A CENTERPUNCHED 6 CM DIAMETER BLANK BRASS DISK SET IN THE TOP OF A 30 CM DIAMETER CONCRETE MONUMENT, 1.2 M (3.9 FT) DEEP, AND 6 CM BELOW GROUND SURFACE IN A LAWN. IT IS 7.0 M (23.0 FT) SOUTHWEST OF AND ABOUT LEVEL WITH THE CENTERLINE OF VT ROUTE 2A, 6.5 M (21.3 FT) NORTHWEST OF THE CENTERLINE OF THE PAVED DRIVE TO THE LIBRARY AND CHURCH, 1.5 M (4.9 FT) NORTHWEST OF THE NORTHWEST EDGE OF A CONCRETE SIDEWALK, 31.1 M (102.0 FT) NORTH OF THE NORTH CORNER OF THE CHURCH, AND 34.8 M (114.2 FT) EAST OF THE EAST CORNER OF THE LIBRARY.



HVCTRL # 2

STANDARD DISK STAMPED

Union Memorial School

N = 227766.5430
E = 447601.6780
ELEV. = 71.668

DESCRIBED BY VERMONT AGENCY OF TRANSPORTATION 1996 (CHR)
GENERAL LOCATION, COLCHESTER, VT. TO REACH FROM THE INTERSECTION OF VT ROUTE 2A AND U.S. ROUTES 2+7 JUST WEST OF COLCHESTER VILLAGE GO SOUTHEAST ALONG VT ROUTE 2A FOR 0.3 MI (0.5 KM) TO THE MOST SOUTHEASTERLY DRIVE TO THE UNION MEMORIAL SCHOOL AND THE MARK ON THE LEFT, IMMEDIATELY SOUTHEAST OF THE SCHOOL, BETWEEN A SIDEWALK AND A PAVED PARKING AREA. THE MARK IS A CENTERPUNCHED 6 CM DIAMETER BLANK BRASS DISK SET IN THE TOP OF A 30 CM DIAMETER CONCRETE MONUMENT, 1.2 M (3.9 FT) DEEP, AND ABOUT 3 CM BELOW GROUND SURFACE. IT IS 5.9 M (19.4 FT) NORTHEAST OF THE NORTHEAST EDGE OF PAVEMENT OF VT ROUTE 2A, 39.6 M (129.9 FT) NORTHWEST OF THE NORTHWEST EDGE OF MIDDLE ROAD, 0.9 M (3.0 FT) NORTHEAST OF THE NORTHEAST EDGE OF A CONCRETE SIDEWALK, AND 6.7 M (22.0 FT) SOUTHEAST OF A FIBERGLASS WITNESS POST AND POLE NO. 11-01 GMP.

GPS CONTROL POINTS

HVCTRL # 6

STANDARD DISK STAMPED

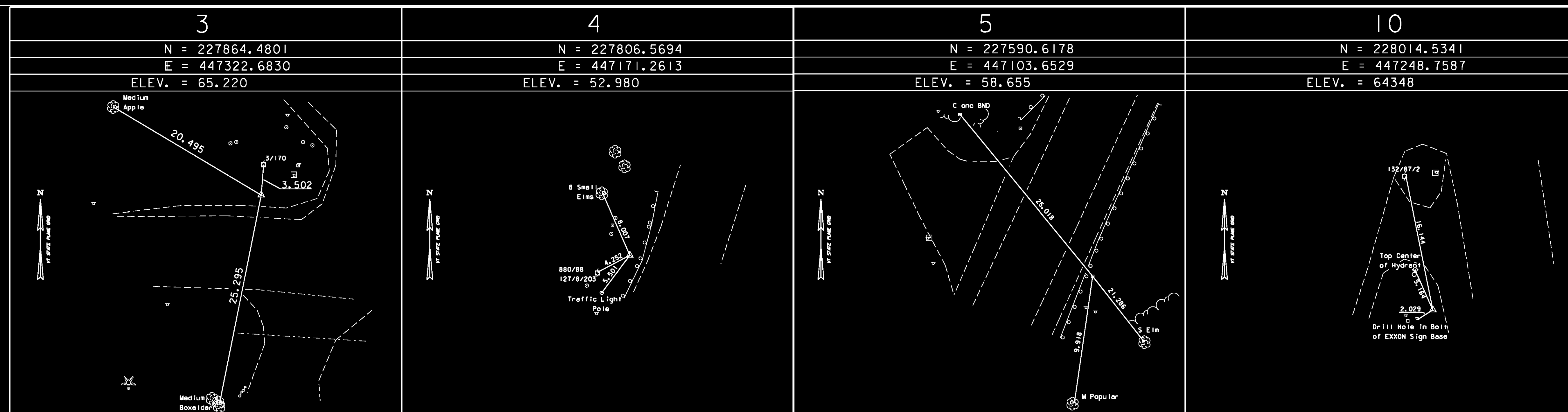
RTE 2+7 Cemetery

N = 227529.1670
E = 447053.8450
ELEV. = 65.573

DESCRIBED BY VERMONT AGENCY OF TRANSPORTATION 1996 (CHR)
GENERAL LOCATION, COLCHESTER, VT. TO REACH FROM THE MOST SOUTHERLY LEG OF THE INTERSECTION OF U.S. ROUTES 2+7 AND VT ROUTE 2A JUST WEST OF COLCHESTER VILLAGE GO SOUTH ALONG U.S. ROUTES 2+7 FOR 0.15 MI (0.24 KM) TO A CEMETERY ON THE RIGHT AND THE MARK ON THE RIGHT AT THE SOUTHEAST CORNER OF THE CEMETERY. THE MARK IS A CENTERPUNCHED 6 CM DIAMETER BLANK BRASS DISK SET IN THE TOP OF A 30 CM DIAMETER CONCRETE MONUMENT, 1.2 M (3.9 FT) DEEP, AND FLUSH WITH GROUND SURFACE. IT IS 10.9 M (35.8 FT) WEST OF AND ABOUT 2.5 M (8.2 FT) HIGHER THAN THE CENTERLINE OF U.S. ROUTES 2+7, 28.7 M (94.2 FT) NORTH OF POLE NO. 121/6 AND NGS BENCHMARK V 64, 13.1 M (43.0 FT) SOUTHWEST OF POLE NO. 5/122, AND 0.8 M (2.6 FT) EAST OF A FIBERGLASS WITNESS POST IN THE CEMETERY FENCE.

* DESCRIPTION PROVIDED BY VERMONT AGENCY OF TRANSPORTATION GEODETIC SURVEY UNIT

TRAVERSE TIES



DATUM
VERTICAL NAVD 88
HORIZONTAL NAD 83/96
ADJUSTMENT Compass

* MAIN TRAVERSE COMPLETED June 25, 1999 Richard Gilman P.C. Ralf Bullock
** ALL TRAVERSE POINTS ARE REBAR DRIVEN FLUSH TO THE GROUND UNLESS OTHERWISE NOTED.

PROJECT NAME: COLCHESTER
PROJECT NUMBER: STP 5600(9)S
FILE NAME: r97d206TIE.dgn
PROJECT LEADER: J. SCHULTZ
DESIGNED BY: D. BRYANT
TIE SHEET 1 OF 2
PLOT DATE: 21-FEB-2013
DRAWN BY: R. BULLOCK
CHECKED BY: P. HODGE
SHEET 19 OF 74