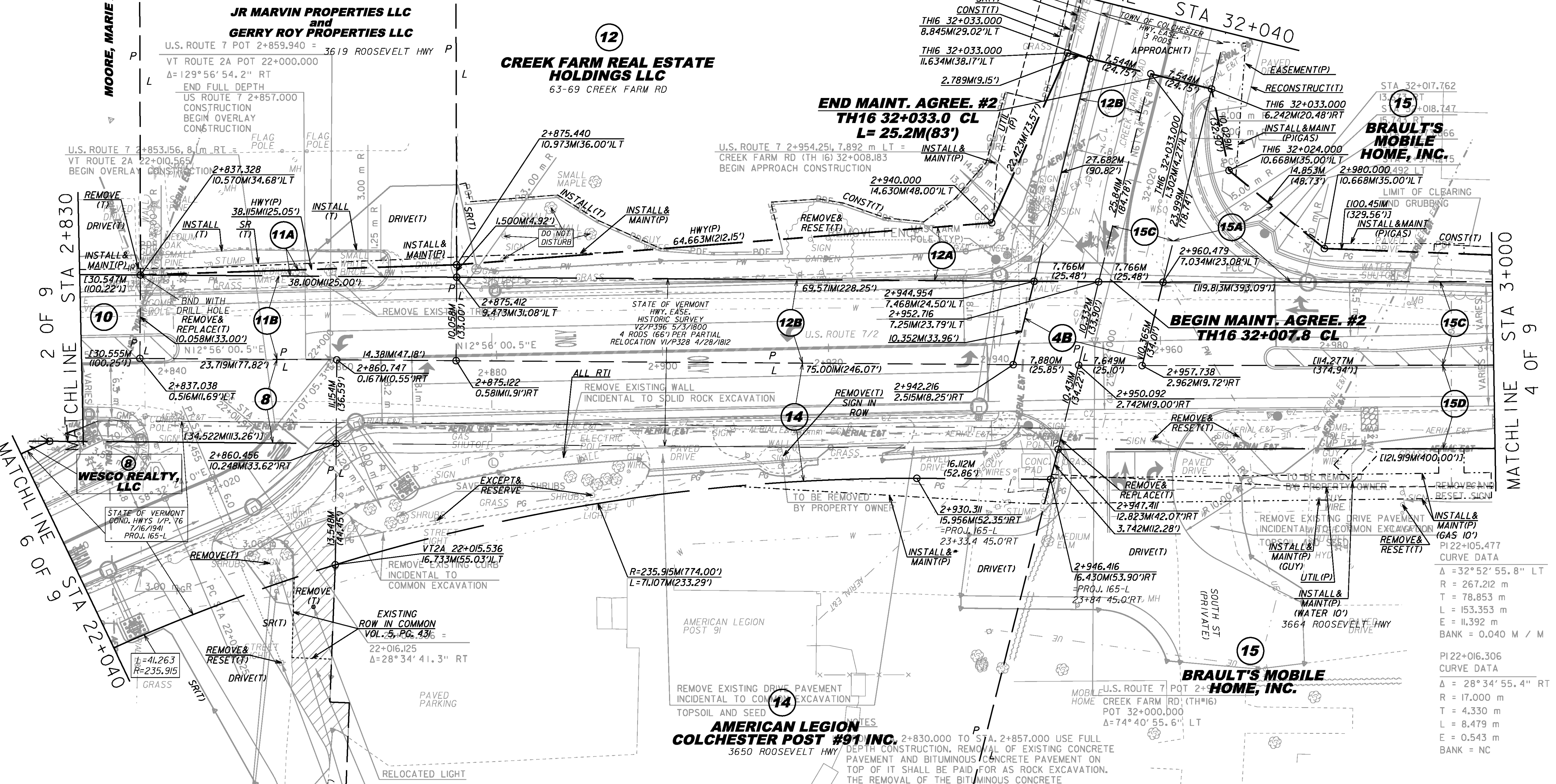


- VERTICAL GRANITE CURB**  
2+830.000 RT ~ 22+040.000 RT  
2+837.392 LT ~ 2+858.767 LT  
2+860.513 RT ~ 2+940.334 RT  
2+878.370 LT ~ 2+942.164 LT  
2+898.153 RT ~ 2+918.413 RT  
2+926.242 RT ~ 2+938.812 RT  
2+942.734 RT ~ 2+948.893 RT  
2+961.144 RT ~ 2+984.000 RT  
32+032.032 RT ~ 3+000.000 LT  
32+032.032 RT ~ 2+990.217 LT  
22+009.221LT ~ 22+022.251LT  
22+033.685 LT ~ 22+040.000 LT  
32+008.931LT ~ 32+040.000 LT
- REMOVAL OF EXISTING FENCE**  
2+884.000 LT ~ 2+887.000 LT  
2+940.000 LT ~ 2+943.000 LT
- CONSTRUCT PAVED ISLAND**  
32+032.032 RT ~ 2+990.217 LT
- CONSTRUCT BIKE/PED PATH**  
22+040.000 LT ~ 2+939.426 RT  
32+011.311LT ~ 32+040.000 LT
- REMOVING AND RESETTING LIGHT POLE**  
FROM 22+021.346, 23.735m LT  
TO 22+018.000, 19.400m LT
- CONSTRUCT SIDEWALK RAMP WITH DETECTABLE WARNING SURFACE**  
(SEE STD C-3A, C-3B)  
22+008.030 LT, RAMP TYPE 2  
2+941.539 RT, RAMP TYPE 1  
2+943.520 LT, RAMP TYPE 1
- CONSTRUCT DRIVE**  
2+832.386 LT (8.8 m PAVED)  
2+871.212LT (7.3 m PAVED)  
2+955.001RT (12.2m PAVED)  
32+040.044 RT (12 m PAVED)  
22+027.733 LT (7.3 m PAVED)



**FOR R.O.W. USE ONLY**

LINE SHOWN ON THIS PLAN AS EXISTING PROPERTY LINES P/L ARE BELIEVED TO BE ACCURATE BUT SHOULD NOT BE RELIED UPON FOR PURPOSES UNRELATED TO THE STATE OF VERMONT'S ACQUISITION OF LAND AND RIGHTS FOR THIS PROJECT.

EXISTING	PROPOSED
IP 2+837.109 11.328LT	NONE
BND 2+837.328 10.570LT	BND 2+837.328 10.570LT
IP 2+947.728 11.672RT	IP 2+947.728 11.672RT
IP 2+947.411 12.823RT	IP 2+947.411 12.823RT

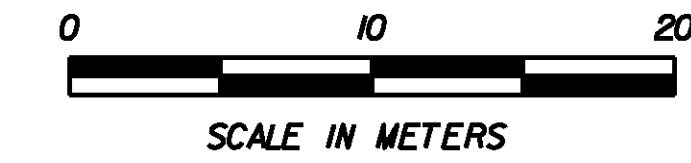
REMOVE EXISTING LIGHT POLE FROM THE ROW AND PROPERTY LINES.

- 2) SEE SIGNAL PLANS FOR LOCATIONS OF TRAFFIC SIGNALS AND MAST ARMS.
- 3) SEE DRAINAGE PLANS FOR LOCATION OF PROPOSED DRAINAGE FACILITIES.
- 4) SEE UTILITY PLANS FOR LOCATIONS OF PROPOSED UTILITY RELOCATIONS.
- 5) CLEARING IS ALLOWED TO THE PDF FENCING, HOWEVER, CONTRACTOR SHALL MINIMIZE CLEARING OF VEGETATION TO THE EXTENT POSSIBLE.

PROJECT NAME: COLCHESTER  
PROJECT NUMBER: STP 5600(9)S

FILE NAME: r97d206Lay3.dgn  
PROJECT LEADER: J. SCHULTZ  
DESIGNED BY: D. BRYANT  
ROW LAYOUT SHEET 3 OF 9

PLOT DATE: 23-FEB-2016  
DRAWN BY: E. PIERCE  
CHECKED BY: E. PIERCE  
SHEET 12 OF 74



PI22+105.477  
CURVE DATA  
Δ = 32° 52' 55.8" LT  
R = 267.212 m  
T = 78.853 m  
L = 153.353 m  
E = 11.392 m  
BANK = 0.040 M / M

PI22+016.306  
CURVE DATA  
Δ = 28° 34' 55.4" RT  
R = 17.000 m  
T = 4.330 m  
L = 8.479 m  
E = 0.543 m  
BANK = NC