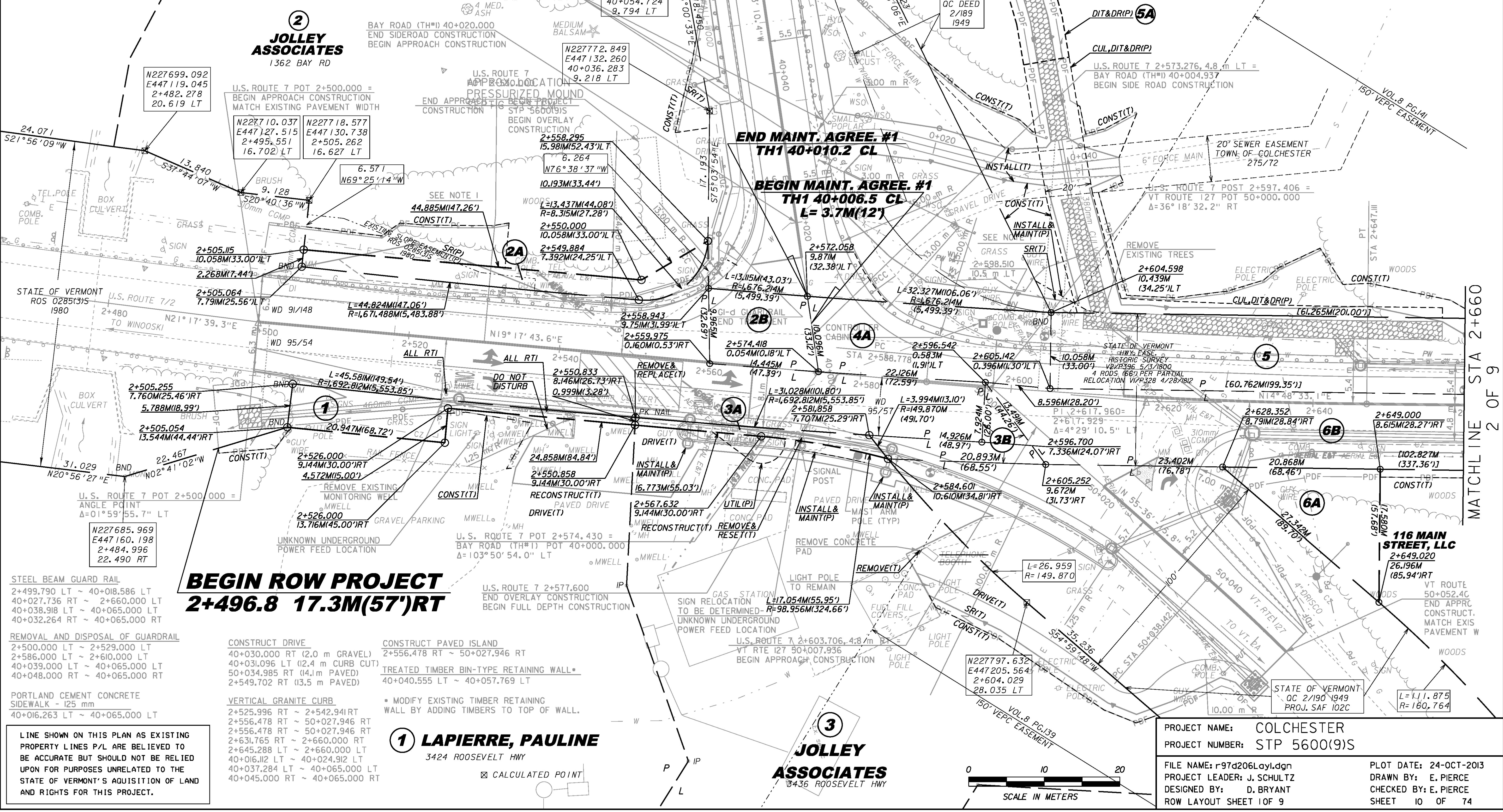


- NOTES**
- AREAS WEST OF ROUTE 7 BETWEEN THE INDIAN BROOK AND THE ROUTE 7 ROADWAY PAVEMENT (INCLUDING AREAS BOTH TO THE NORTH AND SOUTH OF BAY RD), HAVE BEEN IDENTIFIED AS POTENTIAL PRECONTACT ARCHEOLOGICAL SENSITIVITY AREAS. CONSTRUCTION CREW AND EQUIPMENT SHOULD AVOID THIS AREA.
 - FROM STA. 2+530.000 TO STA. 2+577.600 OVERLAY AND WIDEN, FROM STA. 2+577.600 TO STA. 2+660.000 FULL DEPTH CONSTRUCTION INCLUDING REMOVAL OF EXISTING CONCRETE PAVEMENT (TO BE PAID FOR AS SOLID ROCK EXCAVATION).
 - ADJUSTMENT OF MONITORING WELL ELEVATIONS SHALL BE INCIDENTAL TO COMMON EXCAVATION.
 - SEE SIGNAL PLANS FOR LOCATIONS OF TRAFFIC SIGNALS AND MAST ARMS.
 - FROM STA. 2+500.000 TO STA. 2+580.000 EXCAVATION SHALL BE PAID FOR AS 215.20 - EXCAVATION OF PETROLEUM CONTAMINATED SOILS CLASS I.
 - SEE DRAINAGE PLANS FOR LOCATION OF PROPOSED DRAINAGE FACILITIES.
 - SEE UTILITY PLANS FOR LOCATIONS OF PROPOSED UTILITY RELOCATIONS.
 - CLEARING IS ALLOWED TO THE PDF FENCING. HOWEVER, CONTRACTOR SHALL MINIMIZE CLEARING OF VEGETATION TO THE EXTENT POSSIBLE.



BEGIN ROW PROJECT
2+496.8 17.3M(57)RT

- STEEL BEAM GUARD RAIL**
 2+499.790 LT ~ 40+018.586 LT
 40+027.736 RT ~ 2+660.000 LT
 40+038.918 LT ~ 40+065.000 LT
 40+032.264 RT ~ 40+065.000 RT
- REMOVAL AND DISPOSAL OF GUARDRAIL**
 2+500.000 LT ~ 2+529.000 LT
 2+586.000 LT ~ 2+610.000 LT
 40+039.000 LT ~ 40+065.000 LT
 40+048.000 RT ~ 40+065.000 RT
- PORTLAND CEMENT CONCRETE SIDEWALK - 125 mm**
 40+016.263 LT ~ 40+065.000 LT
- CONSTRUCT DRIVE**
 40+030.000 RT (2.0 m GRAVEL)
 40+031.096 LT (1.2 m CURB CUT)
 50+034.985 RT (4.1 m PAVED)
 2+549.702 RT (13.5 m PAVED)
- TREATED TIMBER BIN-TYPE RETAINING WALL**
 40+040.555 LT ~ 40+057.769 RT
- VERTICAL GRANITE CURB**
 2+525.996 RT ~ 2+542.941 RT
 2+556.478 RT ~ 50+027.946 RT
 2+556.478 RT ~ 50+027.946 RT
 2+631.765 RT ~ 2+660.000 RT
 2+645.288 LT ~ 2+660.000 LT
 40+016.112 LT ~ 40+024.912 LT
 40+037.284 LT ~ 40+065.000 LT
 40+045.000 RT ~ 40+065.000 RT

LINE SHOWN ON THIS PLAN AS EXISTING PROPERTY LINES P/L ARE BELIEVED TO BE ACCURATE BUT SHOULD NOT BE RELIED UPON FOR PURPOSES UNRELATED TO THE STATE OF VERMONT'S ACQUISITION OF LAND AND RIGHTS FOR THIS PROJECT.

1 LAPIERRE, PAULINE
 3424 ROOSEVELT HWY

3 JOLLEY ASSOCIATES
 3436 ROOSEVELT HWY

PROJECT NAME: COLCHESTER
 PROJECT NUMBER: STP 5600(9)S
 FILE NAME: r97d206Lay1.dgn
 PROJECT LEADER: J. SCHULTZ
 DESIGNED BY: D. BRYANT
 ROW LAYOUT SHEET 1 OF 9
 PLOT DATE: 24-OCT-2013
 DRAWN BY: E. PIERCE
 CHECKED BY: E. PIERCE
 SHEET 10 OF 74