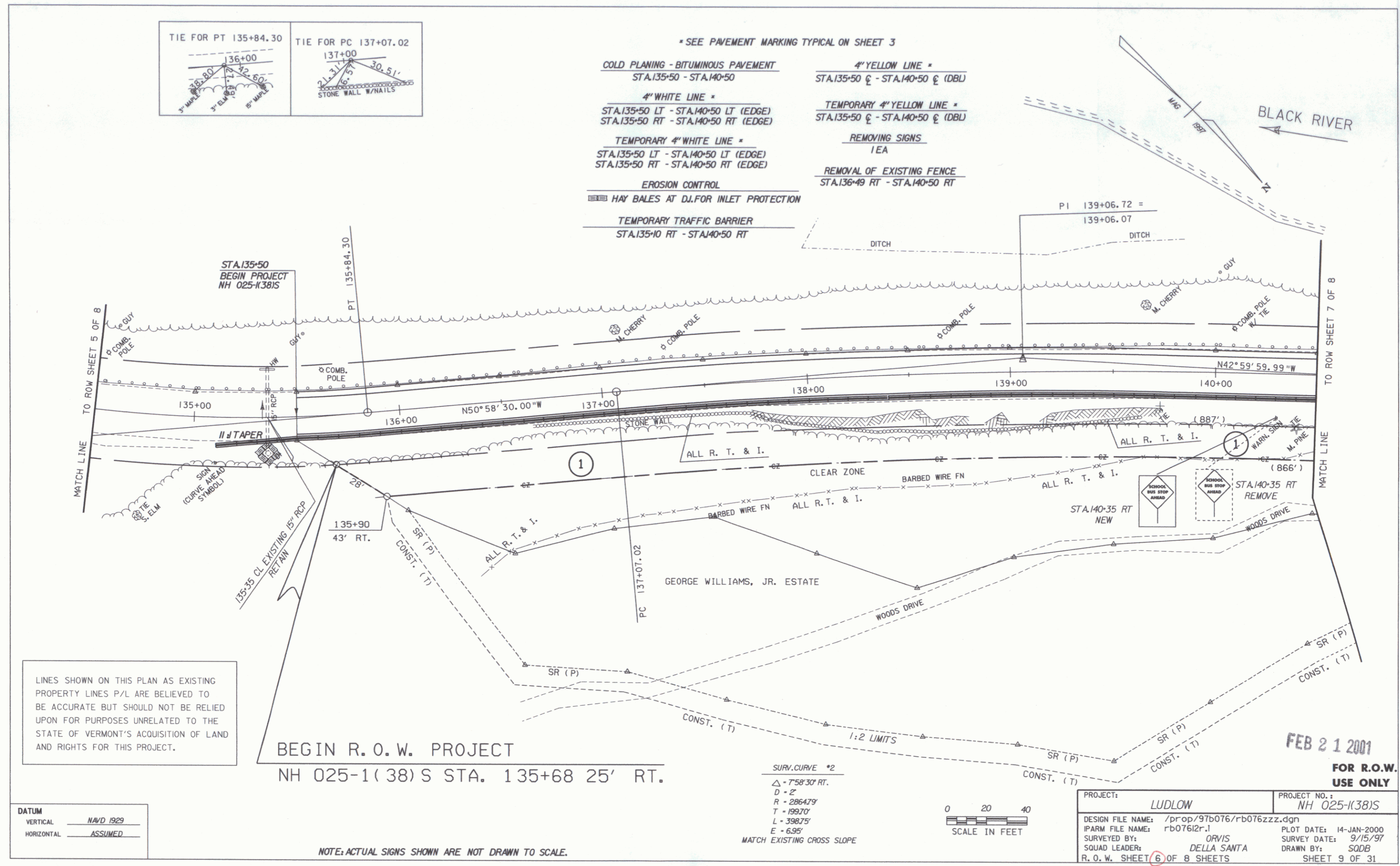


- \* SEE PAVEMENT MARKING TYPICAL ON SHEET 3
- COLD PLANING - BITUMINOUS PAVEMENT  
STA.135+50 - STA.140+50
  - 4" WHITE LINE \*  
STA.135+50 LT - STA.140+50 LT (EDGE)  
STA.135+50 RT - STA.140+50 RT (EDGE)
  - TEMPORARY 4" WHITE LINE \*  
STA.135+50 LT - STA.140+50 LT (EDGE)  
STA.135+50 RT - STA.140+50 RT (EDGE)
  - EROSION CONTROL  
HAY BALES AT DJ.FOR INLET PROTECTION
  - TEMPORARY TRAFFIC BARRIER  
STA.135+10 RT - STA.140+50 RT
  - 4" YELLOW LINE \*  
STA.135+50  $\xi$  - STA.140+50  $\xi$  (DBL)
  - TEMPORARY 4" YELLOW LINE \*  
STA.135+50  $\xi$  - STA.140+50  $\xi$  (DBL)
  - REMOVING SIGNS  
1EA
  - REMOVAL OF EXISTING FENCE  
STA.136+49 RT - STA.140+50 RT



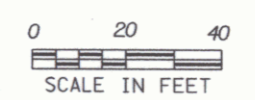
LINES SHOWN ON THIS PLAN AS EXISTING PROPERTY LINES P/L ARE BELIEVED TO BE ACCURATE BUT SHOULD NOT BE RELIED UPON FOR PURPOSES UNRELATED TO THE STATE OF VERMONT'S ACQUISITION OF LAND AND RIGHTS FOR THIS PROJECT.

BEGIN R.O.W. PROJECT  
NH 025-1(38) S STA. 135+68 25' RT.

DATUM	
VERTICAL	NAD 1929
HORIZONTAL	ASSUMED

SURV. CURVE #2  
 $\Delta$  - 758'30" RT.  
 D - 2'  
 R - 286479'  
 T - 199.70'  
 L - 398.75'  
 E - 6.95'

MATCH EXISTING CROSS SLOPE



PROJECT:	LUDLOW	PROJECT NO.:	NH 025-1(38)S
DESIGN FILE NAME:	/prop/97b076/rb076zzz.dgn	PLOT DATE:	14-JAN-2000
IPARM FILE NAME:	rb07612r-1	SURVEY DATE:	9/15/97
SURVEYED BY:	ORVIS	DRAWN BY:	SODB
SQUAD LEADER:	DELLA SANTA		
R.O.W. SHEET	6 OF 8 SHEETS		SHEET 9 OF 31

FEB 21 2001  
FOR R.O.W. USE ONLY

NOTE: ACTUAL SIGNS SHOWN ARE NOT DRAWN TO SCALE.

6