

CONSTRUCT PARKING LOT DRIVE
MAINLINE 10+077.8 LT.

CONSTRUCT TELEPHONE BUILDING DRIVE
MAINLINE 10+145.0 RT.

CONSTRUCT HOUSE DRIVE
PARKING LOT DRIVE 20+005.0 RT.

CONSTRUCT ACCESS DRIVE
PARKING LOT DRIVE 20+020.0 RT.

CONSTRUCT PAVED APRON
PARKING LOT DRIVE 20+020.0 RT. (2 m)

SPECIAL PROVISION (REMOVE AND SALVAGE EXISTING BUS SHELTER)
MAINLINE 10+161.2 RT. (BUS SHELTER)

REMOVE EXISTING PAVEMENT
SEE PROJECT NOTE 6 ON SHEET 3

SIDEWALK RAMP, TYPE 1
PARKING LOT DRIVE 20+004.7 RT. - 20+010.4 RT.
PARKING LOT DRIVE 20+012.5 RT. - 20+018.2 RT.
PARKING LOT DRIVE 20+021.4 RT. - 20+026.2 RT.
PARKING LOT DRIVE 20+045.4 RT. - 20+049.4 RT.

SIDEWALK RAMP, TYPE 6
MAINLINE 10+074.9 RT. - 10+084.7 RT.
MAINLINE 10+082.3 LT. - 10+087.0 LT.
MAINLINE 10+163.6 RT. - 10+168.2 RT.
MAINLINE 10+163.7 LT. - 10+168.2 LT.
② ALONG VT 9 WEST AS SHOWN

BRIDGE RAILING - ANODIZED ALUMINUM/PEDESTRIAN
MAINLINE 10+091.13 LT. - 10+119.370 LT.
MAINLINE 10+091.13 RT. - 10+119.370 RT.

CAST-IN-PLACE CONCRETE CURB, TYPE B
MAINLINE 10+035.0 RT. - 10+078.7 RT.
MAINLINE 10+080.9 RT. - 10+091.05 RT.
MAINLINE 10+119.45 RT. - 10+143.2 RT.
MAINLINE 10+146.6 RT. - 10+166.6 RT.
MAINLINE 10+167.4 RT. - 10+168.3 RT.
MAINLINE 10+084.5 LT. - 10+091.05 LT.
MAINLINE 10+119.45 LT. - 10+166.7 LT.
MAINLINE 10+167.5 LT. - 10+163.6 LT.
PARKING LOT DRIVE 20+007.3 RT. - 20+015.5 RT.
PARKING LOT DRIVE 20+023.6 RT. - 20+048.1 RT.
HOUSE DRIVE 30+008.3 RT. - 30+019.4 RT.
59.5 m ALONG VT 9 EAST AS SHOWN
① 5.8m ALONG VT 9 WEST AS SHOWN
② 4.3m ALONG VT 9 WEST AS SHOWN

PORTLAND CEMENT CONCRETE SIDEWALK, 125mm
MAINLINE 10+035.0 RT. - 10+091.05 RT.
MAINLINE 10+119.450 RT. - 10+168.3 RT.
PARKING LOT DRIVE 20+004.7 RT. - 20+018.2 RT.
PARKING LOT DRIVE 20+021.4 RT. - 20+049.4 RT.
HOUSE DRIVE 30+019.4 RT. - MAINLINE 10+091.05 LT.
MAINLINE 10+119.450 LT. - 10+163.6 LT.
① ALONG VT 9 WEST AS SHOWN
② ALONG VT 9 WEST AS SHOWN

REMOVING AND RESETTING FENCE
PARKING LOT DRIVE 20+027.9 RT. - 20+031.6 RT.

REMOVAL OF EXISTING FENCE
MAINLINE 10+057.2 LT. - 10+076.4 LT.

PLANK RAIL
MAINLINE 10+145.4 RT. - 10+152.9 RT.

SPECIAL PROVISION (ALUMINUM APPROACH RAILING, ANODIZED)
MAINLINE 10+075.70 RT. - 10+091.13 RT.
HOUSE DRIVE 30+018.47 RT. - 10+091.13 LT.
MAINLINE 10+119.37 LT. - 10+134.73 LT.
MAINLINE 10+119.37 RT. - 10+139.83 RT.

REMOVAL AND DISPOSAL OF GUARDRAIL
HOUSE DRIVE 30+009.3 RT. - 30+018.5 RT.

LINES SHOWN ON THIS PLAN AS EXISTING PROPERTY LINES P/L ARE BELIEVED TO BE ACCURATE BUT SHOULD NOT BE RELIED UPON FOR PURPOSES UNRELATED TO THE TOWN OF BRATTLEBORO'S ACQUISITION OF LAND AND RIGHTS FOR THIS PROJECT.

NOTE:
SEE SHEETS 21-22 FOR TRAFFIC SIGNS AND PAVEMENT MARKINGS DETAILS. SEE SHEETS 19-20 FOR DRAINAGE AND UTILITIES DETAILS.

FOR DRAINAGE DETAIL SEE ROW SHEET 9 & 10A OF 15

FOR EROSION CONTROL DETAILS SEE ROW SHEETS 11 & 12 OF 15

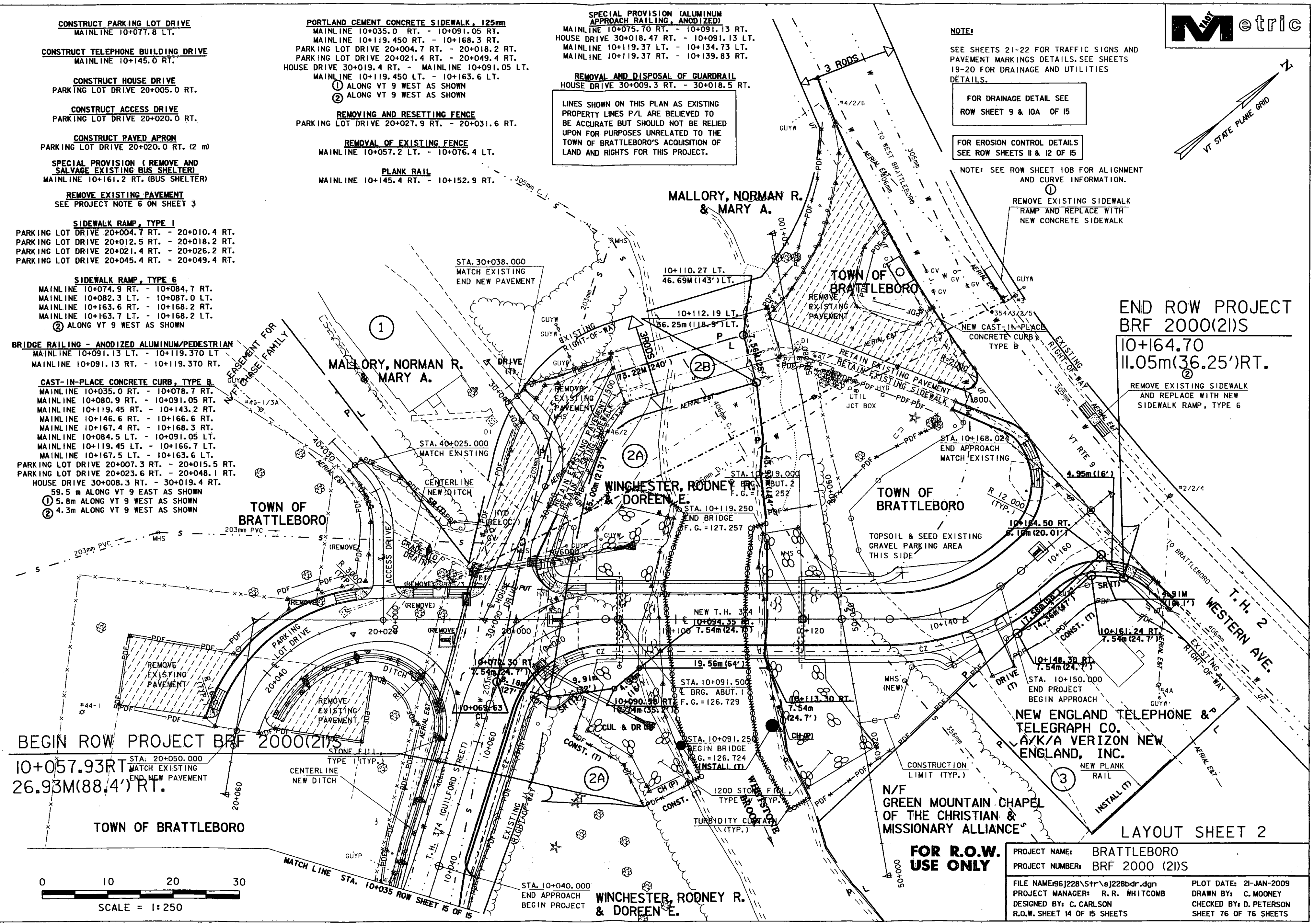
NOTE: SEE ROW SHEET 10B FOR ALIGNMENT AND CURVE INFORMATION.

① REMOVE EXISTING SIDEWALK RAMP AND REPLACE WITH NEW CONCRETE SIDEWALK

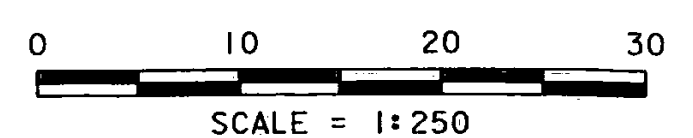
END ROW PROJECT BRF 2000(2)S

10+164.70
11.05m(36.25')RT.

REMOVE EXISTING SIDEWALK AND REPLACE WITH NEW SIDEWALK RAMP, TYPE 6



BEGIN ROW PROJECT BRF 2000(2)S
10+057.93 RT.
26.93M(88.4')RT.



FOR R.O.W. USE ONLY

PROJECT NAME:	BRATTLEBORO	PLOT DATE:	21-JAN-2009
PROJECT NUMBER:	BRF 2000 (2)S	DRAWN BY:	C. MOONEY
FILE NAME:	96J228\Str\9J228bdr.dgn	CHECKED BY:	D. PETERSON
DESIGNED BY:	C. CARLSON	R.O.W. SHEET:	14 OF 15 SHEETS
		SHEET:	76 OF 76 SHEETS

LAYOUT SHEET 2