

**SEEDING FORMULA  
RURAL AREAS**

% WT.	kg/ha	NAME	PUR %	GERM %
37.5	26.0	CREEPING RED FESCUE	98	85
37.5	26.0	TALL FESCUE	95	90
5.0	4.0	RED TOP	95	90
15.0	10.0	BIRDSFOOT TREFOIL	98	85
5.0	4.0	ANNUAL RYE GRASS	95	85
100.0	70.0			

**GENERAL NOTES**

SEED MIXTURE SHALL NOT HAVE A WEED CONTENT EXCEEDING 0.40% BY WEIGHT AND SHALL BE FREE OF ALL NOXIOUS SEED.

SEED TO BE APPLIED PER SEEDING FORMULA ABOVE OR AS DIRECTED BY THE ENGINEER.

FERTILIZER FORMULA 10-20-10, TO BE USED WITH SEED, APPLIED AT THE RATE OF 560 kg/ha. (HYDRO SEEDERS MAY USE 19-19-19 FORMULA).

AGRICULTURAL LIMESTONE TO BE APPLIED AT THE RATE OF 4500 kg/ha, OR AS DIRECTED BY THE ENGINEER.

HAY MULCH TO BE PLACED ON EARTH SLOPES AT THE RATE OF 4500 kg/ha, OR AS DIRECTED BY THE ENGINEER.

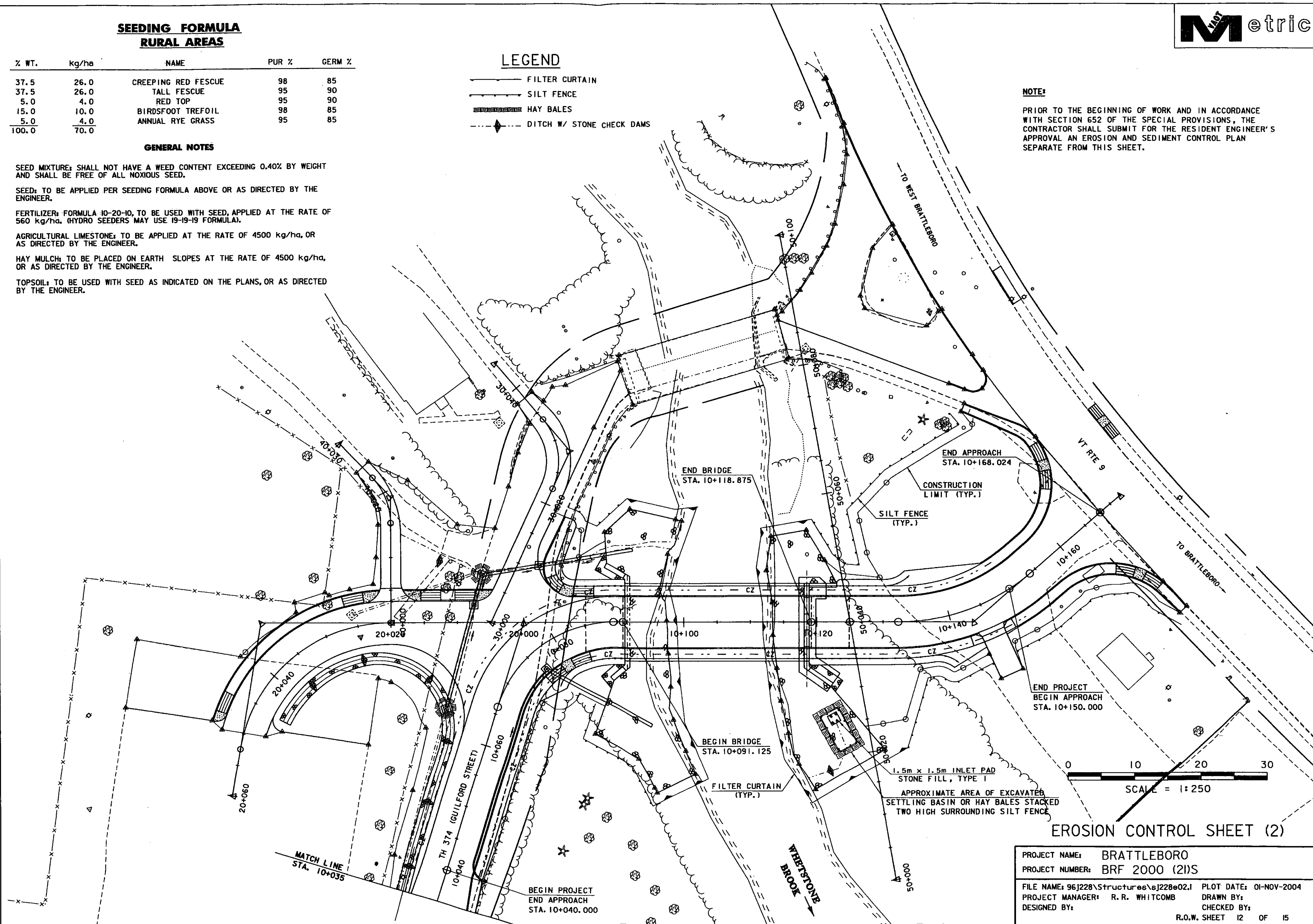
TOPSOIL TO BE USED WITH SEED AS INDICATED ON THE PLANS, OR AS DIRECTED BY THE ENGINEER.

**LEGEND**

- FILTER CURTAIN
- SILT FENCE
- HAY BALES
- DITCH W/ STONE CHECK DAMS

**NOTE:**

PRIOR TO THE BEGINNING OF WORK AND IN ACCORDANCE WITH SECTION 652 OF THE SPECIAL PROVISIONS, THE CONTRACTOR SHALL SUBMIT FOR THE RESIDENT ENGINEER'S APPROVAL AN EROSION AND SEDIMENT CONTROL PLAN SEPARATE FROM THIS SHEET.



**EROSION CONTROL SHEET (2)**

PROJECT NAME:	BRATTLEBORO
PROJECT NUMBER:	BRF 2000 (2)S
FILE NAME:	96J228\Structures\6J228e02.1
PROJECT MANAGER:	R. R. WHITCOMB
DESIGNED BY:	
PLOT DATE:	01-NOV-2004
DRAWN BY:	
CHECKED BY:	
R.O.W. SHEET 12 OF 15	