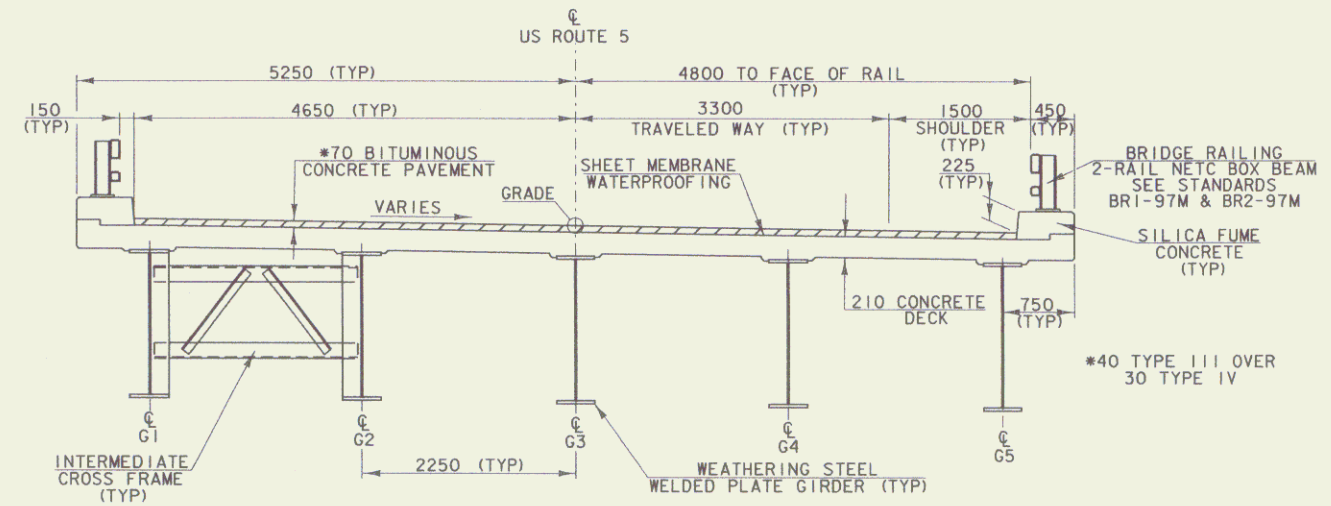
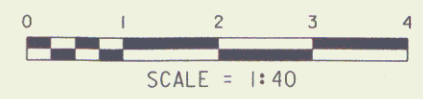
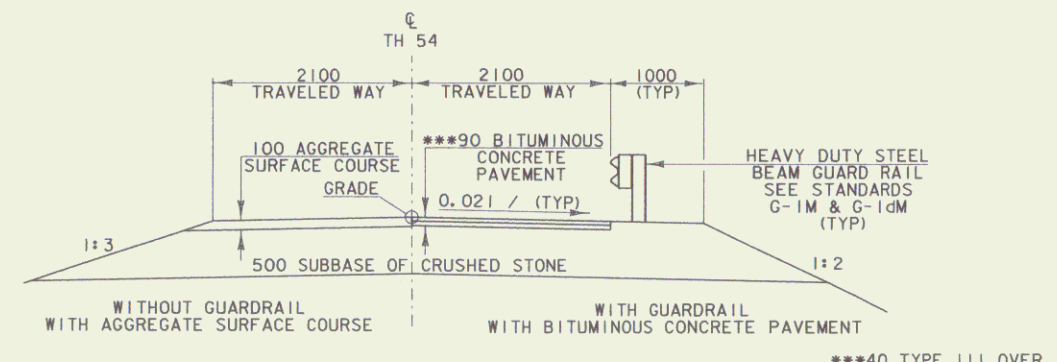
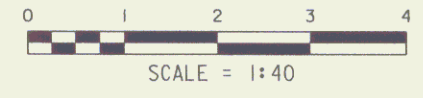


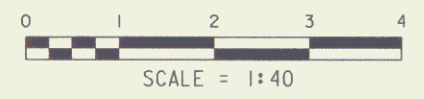
US 5 TYPICAL ROADWAY SECTION



TYPICAL BRIDGE SECTION



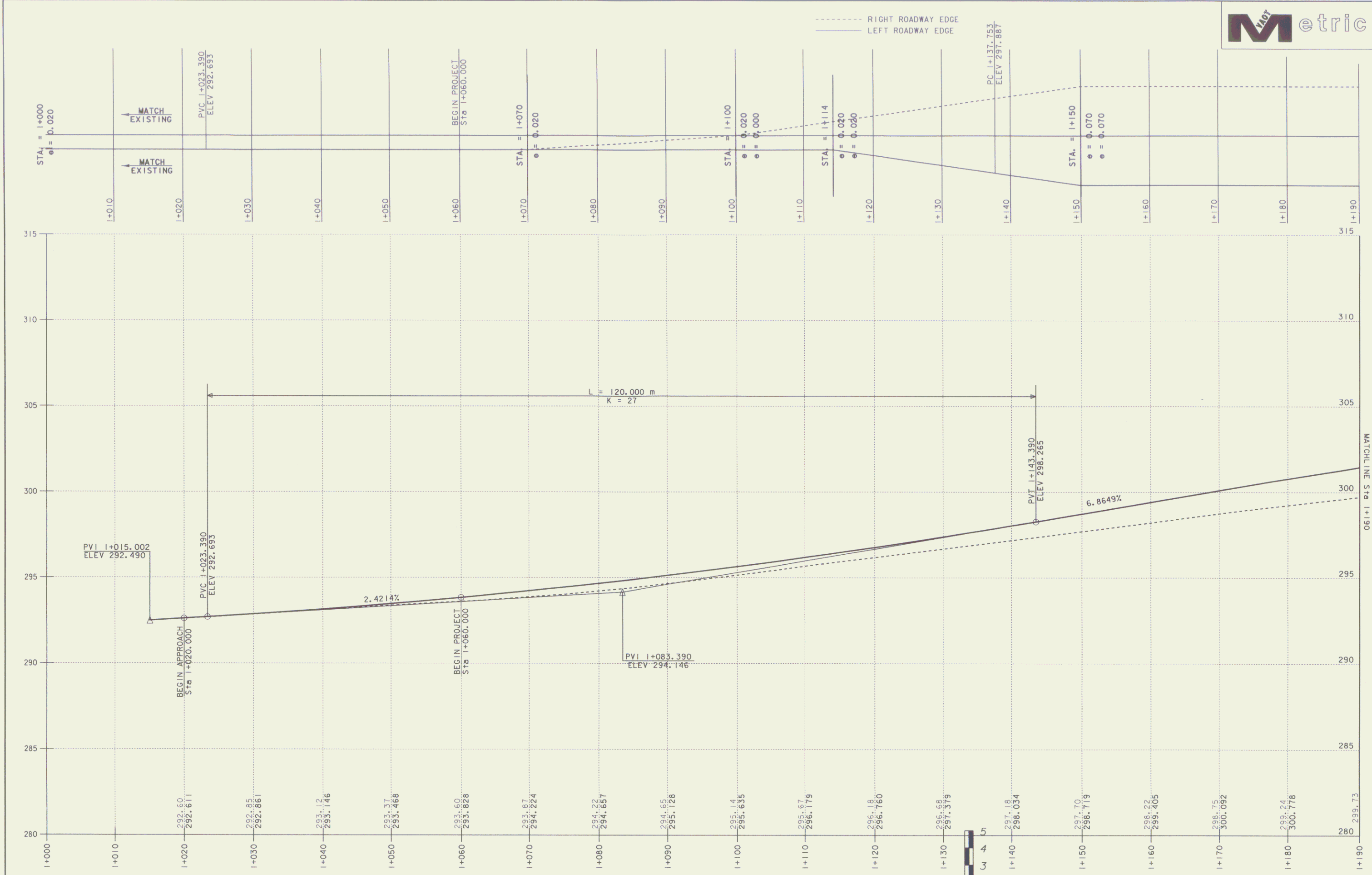
TH 54 TYPICAL ROADWAY SECTION



MATERIAL ITEM	TOLERANCE
PAVEMENT	±5 mm TOTAL THICKNESS
AGGREGATE SURFACE COURSE	±10 mm
BASE COURSE	±10 mm
SUBBASE	±30 mm
SAND BORROW	±30 mm
GRANULAR BORROW	±30 mm

STATE OF VERMONT AGENCY OF TRANSPORTATION			
Town Of	BARTON	Bridge No.	161
Highway No.	US ROUTE 5	Log Sta.	
		Surv. Sta.	
US ROUTE 5 OVER NORTHERN VERMONT RAILROAD			
TYPICAL SECTIONS			
Designed By	W. B. SYMONDS	Drawn By	P. G. JARVIS
Checked By	W. B. SYMONDS	Date	12/98
		Bridge Design Supervisor	C. P. WILLIAMS
		Date	12/98
PROJECT	BARTON	PROJECT NO.	STP 0113 (58) S
I.G.C. Info. 96c116/structures/sc116typ.dgn sc116typ.i			
R. O. W. SHEET 2 OF 16 SHEETS			

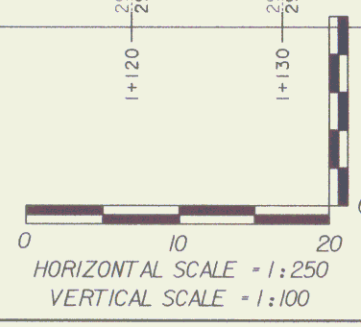
MAY 30 2006



PROFILE US ROUTE 5

DATUM
 VERTICAL ASSUMED
 HORIZONTAL NAD 83 (93)

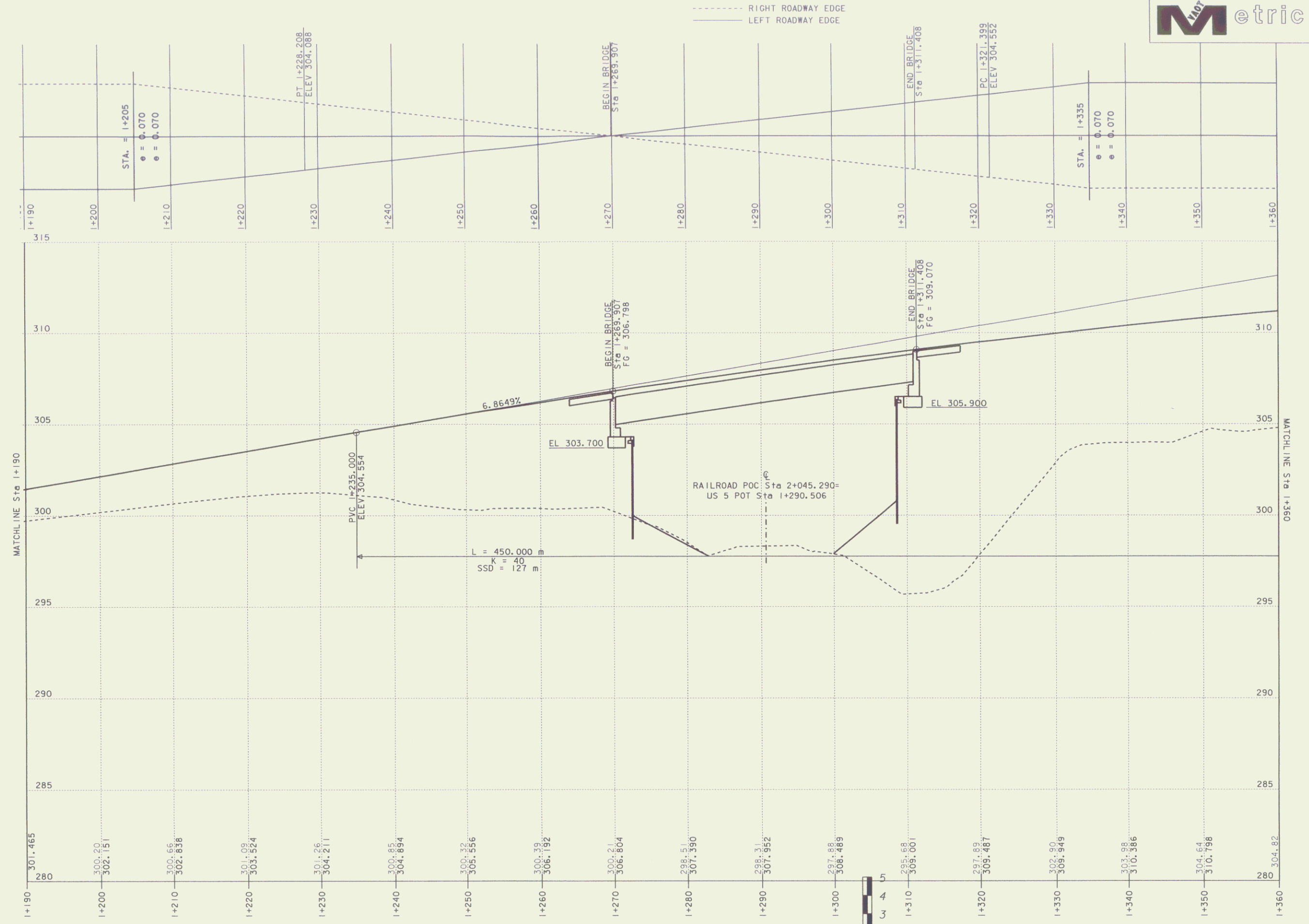
NOTE: EXISTING CENTERLINE ELEVATIONS ARE SHOWN TO THE HUNDREDTH.
 PROPOSED CENTERLINE ELEVATIONS ARE SHOWN TO THE THOUSANDTH.



PROJECT:	BARTON	PROJECT NO. :	STP 0113 (58) S
DESIGN FILE NAME:	96c116/structures/sc116bdr.dgn		
IPARM FILE NAME:	sc116pr1.1	PLOT DATE:	08-FEB-2001
SURVEYED BY:	R. BULLOCK, R. GILMAN	SURVEY DATE:	8/96, 5/99
SQUAD LEADER:	C. P. WILLIAMS	DRAWN BY:	P. G. JARVIS
R. O. W. SHEET 3 OF 16 SHEETS			

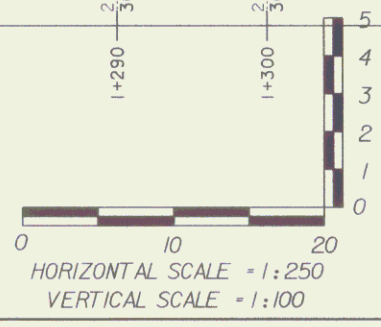
MAY 30 2006

3



PROFILE US ROUTE 5

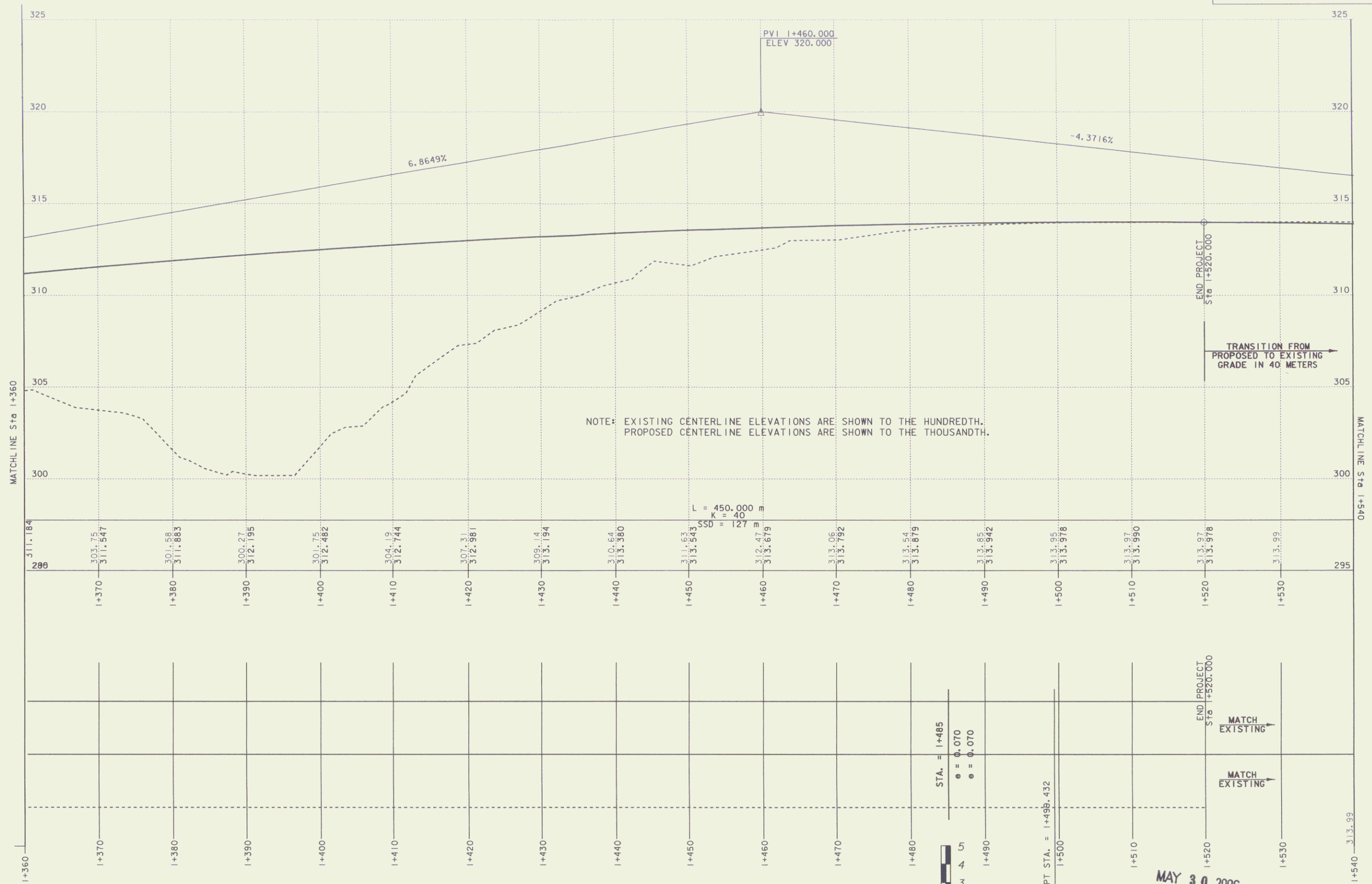
NOTE: EXISTING CENTERLINE ELEVATIONS ARE SHOWN TO THE HUNDREDTH.
 PROPOSED CENTERLINE ELEVATIONS ARE SHOWN TO THE THOUSANDTH.



DATUM	
VERTICAL	ASSUMED
HORIZONTAL	NAD 83 (93)

PROJECT:	BARTON	PROJECT NO. :	STP 0113 (58) S
DESIGN FILE NAME:	96c116/structures/sc116bdr.dgn	PLOT DATE:	08-FEB-2001
IPARM FILE NAME:	sc116pr2.i	SURVEY DATE:	8/96,5/99
SURVEYED BY:	R. BULLOCK, R. GILMAN	DRAWN BY:	P. G. JARVIS
SQUAD LEADER:	C. P. WILLIAMS		
	R. O. W. SHEET 4 OF 16 SHEETS		

MAY 30 2006



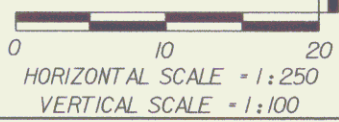
NOTE: EXISTING CENTERLINE ELEVATIONS ARE SHOWN TO THE HUNDREDTH. PROPOSED CENTERLINE ELEVATIONS ARE SHOWN TO THE THOUSANDTH.

L = 450.000 m
K = 40
SSD = 127 m

DATUM
VERTICAL ASSUMED
HORIZONTAL NAD 83 (93)

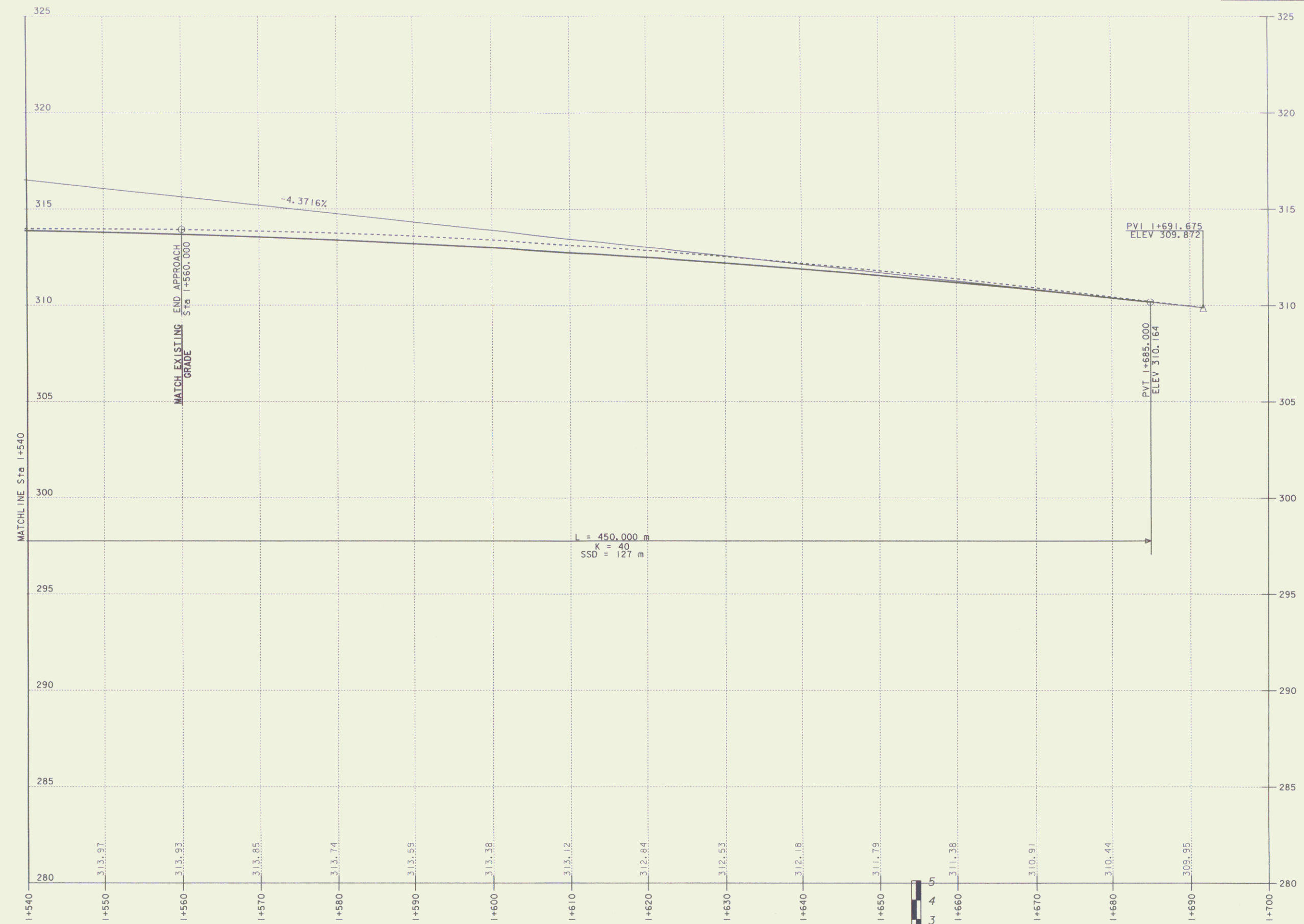
----- RIGHT ROADWAY EDGE
----- LEFT ROADWAY EDGE

PROFILE US ROUTE 5



MAY 30 2006

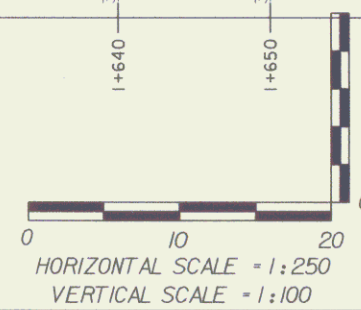
PROJECT: BARTON	PROJECT NO.: STP 0113 (58) S
DESIGN FILE NAME: 96c116/structures/sc116bdr.dgn	PLOT DATE: 09-FEB-2001
IPARM FILE NAME: sc116pr3.1	SURVEY DATE: 8/96,5/99
SURVEYED BY: R. BULLOCK, R. GILMAN	DRAWN BY: P.G. JARVIS
SQUAD LEADER: C.P. WILLIAMS	R. O. W. SHEET 5 OF 16 SHEETS



PROFILE US ROUTE 5

DATUM
VERTICAL ASSUMED
HORIZONTAL NAD 83 (93)

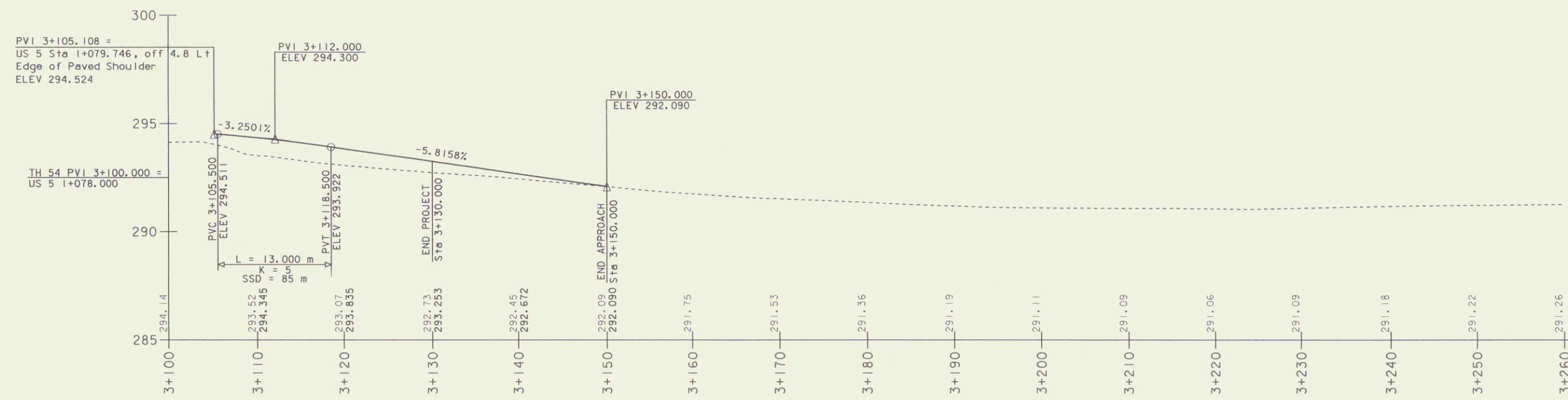
NOTE: EXISTING CENTERLINE ELEVATIONS ARE SHOWN TO THE HUNDRETH.
PROPOSED CENTERLINE ELEVATIONS ARE SHOWN TO THE THOUSANDTH.



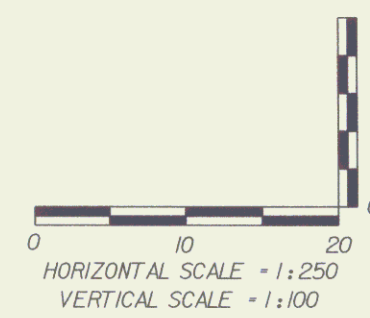
PROJECT: BARTON	PROJECT NO.: STP 0113 (58) S
DESIGN FILE NAME: 96c116/structures/sc116bdr.dgn	PLOT DATE: 09-FEB-2001
IPARM FILE NAME: sc116pr4.i	SURVEY DATE: 8/96,5/99
SURVEYED BY: R. BULLOCK, R. GILMAN	DRAWN BY: P. G. JARVIS
SQUAD LEADER: C. P. WILLIAMS	R. O. W. SHEET 6 OF 16 SHEETS

MAY 30 2006

6



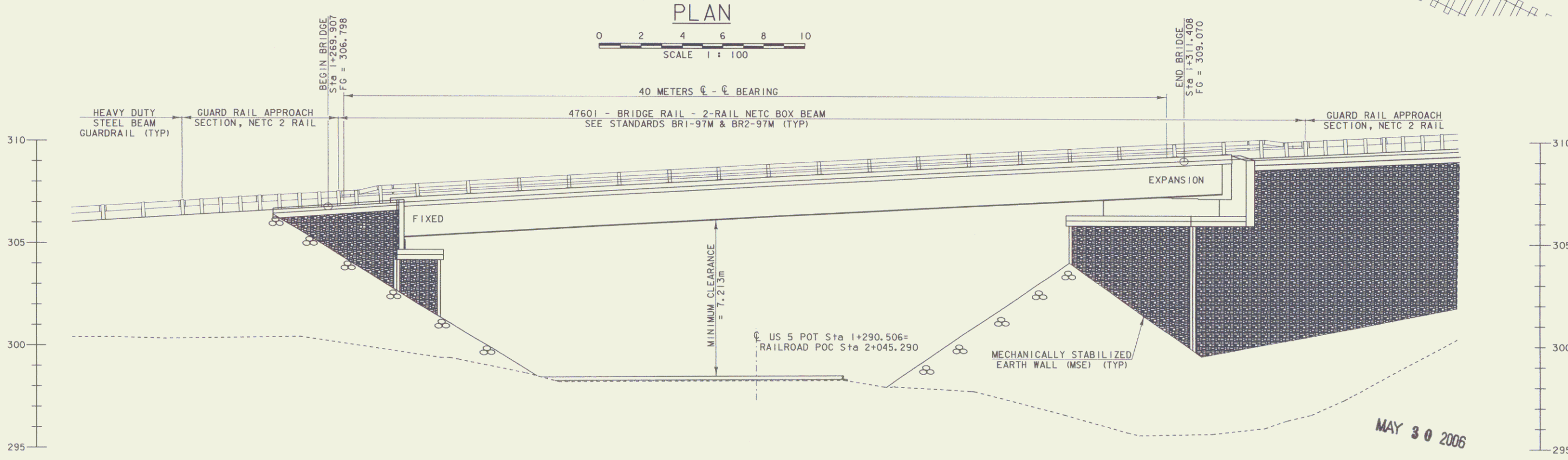
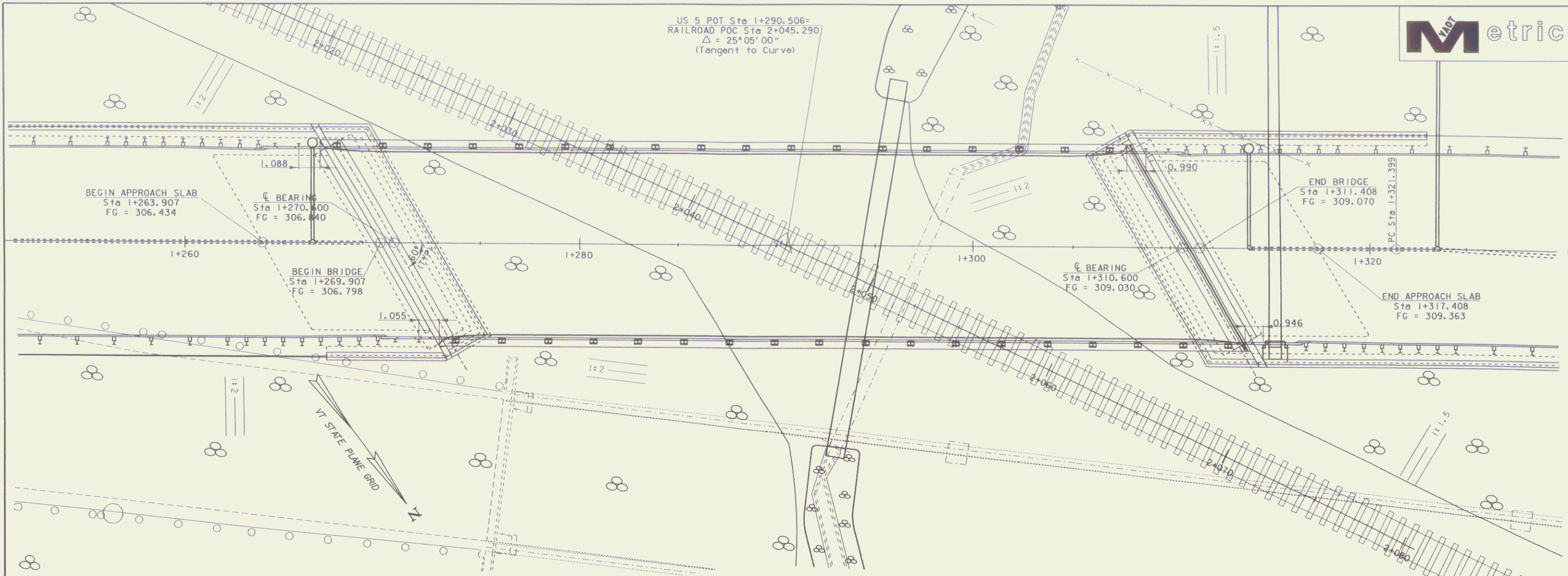
TH 54 PROFILE



MAY 30 2006

DATUM
VERTICAL ASSUMED
HORIZONTAL NAD 83 (93)

PROJECT:	BARTON	PROJECT NO.:	STP 0113(58)S
DESIGN FILE NAME:	96c16/structures/sc16+54.dgn		
IPARM FILE NAME:	sc16p54.i	PLOT DATE:	12-FEB-2001
SURVEYED BY:	R. BULLOCK, R. GILMAN	SURVEY DATE:	08/96,05/99
SQUAD LEADER:	C.P. WILLIAMS	DRAWN BY:	M. CERUTTI
	R. O. W.	SHEET	7 OF 16 SHEETS



PROJECT:	BARTON	PROJECT NO.:	STP 0113 (58) S
DESIGN FILE NAME:	96c116/structures/sc116pe.dgn	PLOT DATE:	13-FEB-2001
IPARM FILE NAME:	sc116pe.i	SURVEY DATE:	AUG 1996
SURVEYED BY:	R. BULLOCK	DRAWN BY:	P. G. JARVIS
SQUAD LEADER:	C. P. WILLIAMS	PLAN & ELEVATION SHEET	R. O. W. SHEET 8 OF 16 SHEETS



**STATE OF VERMONT
AGENCY OF TRANSPORTATION
RIGHT OF WAY PLANS
DETAIL SHEET**

TABLE OF PROJECT PROPERTY ACQUISITION

PARCEL NO.	GRANTOR	SHEET NO.	BEGINNING STATION	ENDING STATION	TAKING	REM.	RIGHTS	TITLE TAKEN	DATE	TOWN OR CITY RECORDED	BK.	PG.	REMARKS	REVISION NO.	SHEET	DESCRIPTION OF REVISION	DATE	MADE BY	APPROVED BY		
1	MENARD, NATHAN F. BUTLER, REBECCA	12,13	1+308.7 LT.	1+442.08 LT.	698.6 S.M.±			WD	11-28-01	BARTON	113	150-	7,517 S.F.±	1	10,12 13,14 15	PARCEL NO. 1 ROLL INS. CHANGE OWNER TO: MENARD, NATHAN F. BUTLER, REBECCA PER C.O. 9204	07-11-01	M. J. R.	R. P. D.		
		14,15	1+286.9 LT.	1+453.0 LT.		CONST.	(T) 403.0 S.M.±					151	INCLUDE EROSION CONTROL 4,338 S.F.±								
			1+297.3 LT.	1+316.0 LT.		DITCH & DRAINAGE	(P) 35.0 S.M.±						377 S.F.±								
			1+300.0 LT.	1+386.3 LT.		SLOPE	(P) 561.0 S.M.±						6,039 S.F.±								
			1+315.0 LT.			CULVERT	(P)														
			1+323.6 LT.			CULVERT & DRAINAGE	(P)														
			1+330.0 LT.	1+380.0 RT.		SLOPE	(T) 176.6 S.M.±													1,901 S.F.±	
			1+334.6 LT.			DRAINAGE	(P)														
			1+334.6 LT.	1+373.0 LT.		CULVERT	(P)														
			1+380.0 LT.	1+447.3 LT.		SLOPE	(T) 628.0 S.M.±													6,760 S.F.±	
2	LAVALLE, LINDA R.	12	1+060.4 RT.	1+068.6 RT.			CONST.	(T) 20.0 S.M.±	WDOE	04-12-02	BARTON	114	444-	2	10,14	PARCEL NO. 4 NEWPORT AND RICHFORD RAILROAD COMPANY. ADD TELEGRAPH TOPO TO LAYOUT. ADD *INCLUDES REMAINING 4 TELEGRAPH POLES & PERTINENCE* TO DETAIL SHEET. PER C.O. 9208.	09-05-01	M. J. R.	R. P. D.		
			1+064.6 RT.		DRAINAGE	(P)						114	446							INCLUDE EROSION CONTROL 215 S.F.±	
3	LAHAR, TIM G. PALMER, VIRGINIA M.	12,13	TH54 3+161.4 RT.	TH54 3+170.1 RT.			CONST.	(T) 33.6 S.M.±	WDOE	06-26-02	BARTON	114	275-	3	10,14	ELECTRONIC FILES TO STRUCTURES 11-29-01					
			TH54 3+164.5 RT.	TH54 3+166.9 RT.		DITCH & DRAINAGE	(P) 3.1 S.M.±						114							276	INCLUDE EROSION CONTROL 362 S.F.± 33 S.F.±
4	NEWPORT AND RICHFORD RAILROAD COMPANY	12,13	1+200.3 LT.	1+409.6 RT.			CONST.	(T) .473 HA±			BARTON			4	10,14						
		14,15																			INCLUDE EROSION CONTROL, INCLUDES SHEET PILING INCLUDES REMOVING 4 TELEGRAPH POLES & PERTINENCE 1.17 A±
			1+210.0 LT.	1+250.0 LT.		DITCH	(P) 128.6 S.M.±														1,384 S.F.±
			1+216.3 LT.	1+291.0 RT.		SLOPE	(P) 739.6 S.M.±														7,961 S.F.±
			1+238.3 LT.	1+243.0 LT.		CULVERT	(P)														WITH FLUSHING BASINS
			1+245.6 LT.			CULVERT & D.I.	(P)														
			1+246.0 LT.	1+263.0 CL.		CULVERT	(P)														WITH FLUSHING BASINS
			1+234.4 LT.	1+348.9 RT.		HIGHWAY CROSSING	(P) 0.13 HA±														INCLUDE BRIDGE STRUCTURE & ABUTMENTS, 0.33A±
			1+266.6 RT.	1+384.0 RT.		REMOVE	(T)														EXISTING BRIDGE
			1+287.0 LT.	1+317.0 LT.		REMOVE & RESET	(T)														FENCE
			1+291.6 RT.	1+294.3 RT.		DITCH & DRAINAGE	(P) 19.0 S.M.±														205 S.F.±
			1+292.6 RT.	1+296.6 LT.		CULVERT	(T)														TO BE MAINTAINED BY RAILROAD
			1+293.0 RT.	1+299.3 LT.		REMOVE OR FILL	(T)														EXISTING CULVERT
			1+290.0 LT.	1+300.0 LT.		DITCH & DRAINAGE	(P) 17.0 S.M.±														183 S.F.±
			1+296.6 LT.	1+397.5 RT.		SLOPE	(P) 1088.6 S.M.±														11,718 S.F.±
			1+314.0 LT.	1+326.5 RT.		CULVERT	(P)														WITH FLUSHING BASINS
			1+315.6 LT.	1+315.6 RT.		CULVERT & D.I.	(P)														
			1+348.0 RT.			DRAINAGE	(P)														
			1+348.0 RT.	1+384.0 RT.		CULVERT	(T)														SLEEVE EXISTING CULVERT, TO BE MAINTAINED BY RAILROAD
			1+355.0 RT.	1+379.3 RT.		CULVERT	(P)														WITH FLUSHING BASIN
	1+386.6 RT.	1+406.0 RT.		SLOPE	(T) 62.8 S.M.±								676 S.F.±								
	1+380.0 RT.	1+386.6 RT.		DITCH	(P) 18.0 S.M.±								194 S.F.±								
	1+381.6 RT.	1+383.9 RT.		CULVERT	(P)																
	1+381.6 RT.	1+384.0 RT.		CULVERT & D.I.	(P)																

ACCT.GFunk
\\va07_cadd\planning\cab\the1\%c016\rightofway\rc016.dwg
DATE PLOTTED 02-MAY-2002

DR. (P)- DRAINAGE RIGHT
DIT. (P)- DITCHING RIGHT
CH. (P)- CHANNEL RT.
DRIVE (T)- DRIVE RIGHT
CUL. (P)- CULVERT RIGHT
[W]- WATER SOURCES

PRESENT R.O.W.
TAKING WITHOUT ACCESS
TAKING WITHOUT ACCESS ALONG PROPERTY LINE
TAKING WITH ACCESS
PERMANENT EASEMENT
TEMPORARY EASEMENT

LEGEND
--- C&T (P) --- CLEARING & TRIMMING
--- CONSL. (T) --- CLEAR ZONE
--- SR --- CONSTRUCTION EASEMENT
--- P --- SLOPE RIGHTS
--- L --- PROPERTY LINE
--- A --- TOP OF CUT
--- O --- TOE OF SLOPE

APPROVED: ROGER P. DUMAS DATE: 02-26-01
CHIEF, PLANS & TITLES

R. O. W. PLANS
BARTON
STP 0113(58) S
SHEET 10 OF 16

MAY 30 2006

10



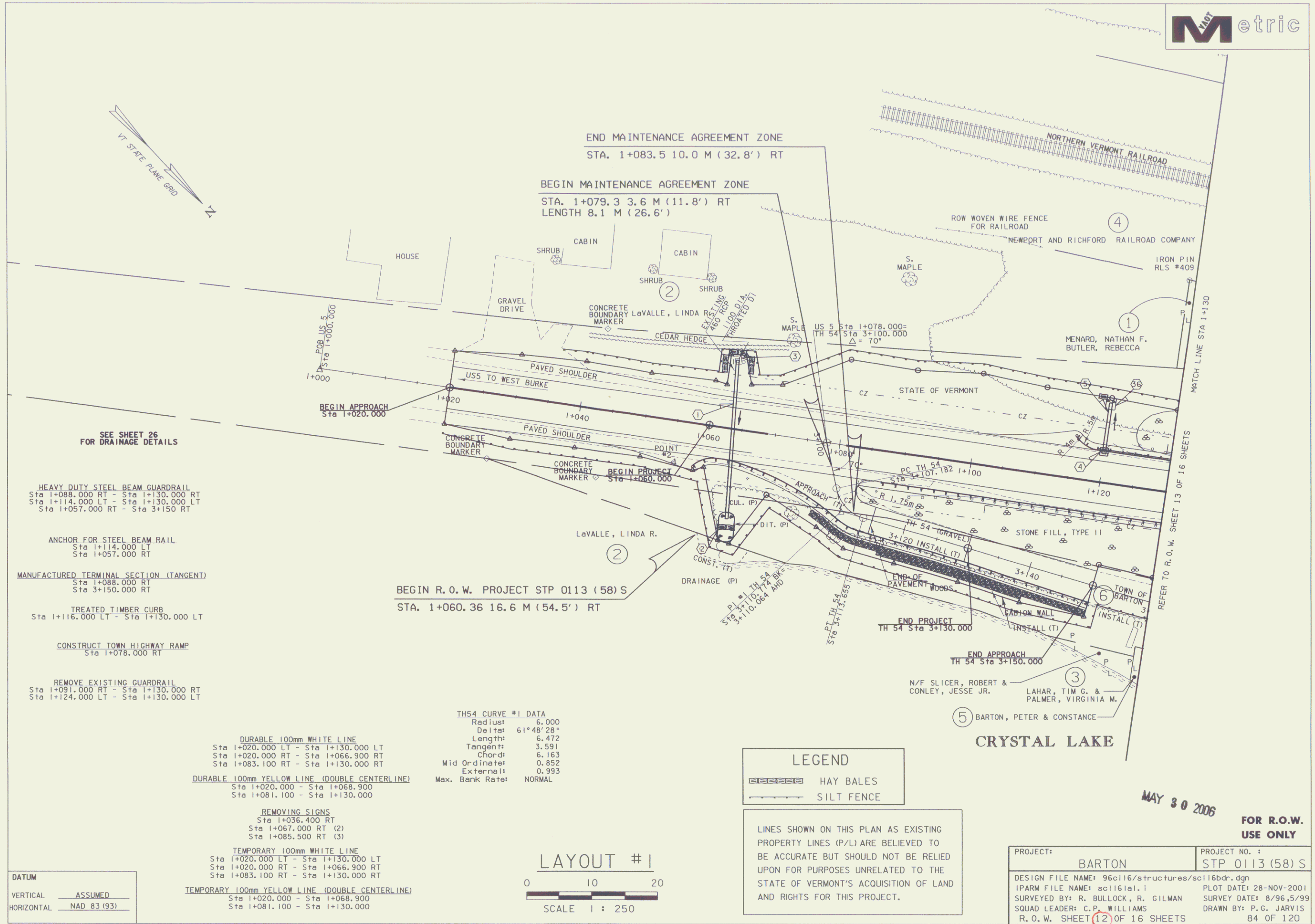
**STATE OF VERMONT
AGENCY OF TRANSPORTATION
RIGHT OF WAY PLANS
DETAIL SHEET**

TABLE OF PROJECT PROPERTY ACQUISITION

PARCEL NO.	GRANTOR	SHEET NO.	BEGINNING STATION	ENDING STATION	TAKING	REM.	RIGHTS	TITLE TAKEN	DATE	TOWN OR CITY RECORDED	BK.	PG.	REMARKS	REVISION NO.	SHEET	DESCRIPTION OF REVISION	DATE	MADE BY	APPROVED BY			
5	BARTON, PETER AND CONSTANCE	12,13	TH54 3+161.4 RT.	TH54 3+170.1 RT.			CONST. (T) 33.6 S.M.±	WDOE	11-28-01	BARTON	113	148-	INCLUDES EROSION CONTROL									
				TH54 3+164.5 RT.	TH54 3+166.9 RT.			DITCH & DRAINAGE (P) 3.1 S.M.±					149	362 S.F.± 33 S.F.±								
6	TOWN OF BARTON	12,13 14	1+059.6 RT.	1+062.0 RT.			INSTALL (T)	QCD	9-06-01	BARTON	112	186-	EROSION CONTROL									
				1+063.4 RT.	1+066.0 RT.			DITCH (P) 11.0 S.M.±					188	118 S.F.±								
				1+064.1 RT.	1+064.8 RT.			CULVERT (P)							REMOVE EXISTING							
				1+083.5 RT.	TH54 3+150.0 CL.			APPROACH (T)							TH54 INCLUDES EROSION CONTROL							
				TH54 3+109.0 RT.	TH54 3+150.0 RT.			INSTALL (T)							GUARDRAIL							
				TH54 3+108.6 RT.	TH54 3+150.0 RT.			INSTALL (T)							GABION WALL							
				TH54 3+150.0 RT.	TH54 3+317.0 LT.			INSTALL (T) 196.0 S.M.±							EROSION CONTROL, 2,110 S.F.							
				TH54 3+164.0 LT.	TH54 3+272.0 LT.			SLOPE (P) 62.2 S.M.±							670 S.F.±							
				TH54 3+164.6 RT.	TH54 3+167.0 RT.			DITCH (P) 4.9 S.M.±							16.1 S.F.±							
				TH54 3+165.6 RT.	TH54 3+167.0 LT.			CULVERT (P)							REMOVE EXISTING							
				TH54 3+251.1 CL.				EASEMENT (T) 41.1 S.M.±							CLEAN CULVERT, 442 S.F.±							
				TH54 3+336.6 CL.	TH54 3+381.0 LT.			CONST. (T) 0.05 HA±							0.12A± INCLUDES EROSION CONTROL							
7	BARTON VILLAGE, INC.												UTILITY									
8	VERIZON NEW ENGLAND, INC.												UTILITY									
9	PORTLAND PIPELINE CORP.												UTILITY									
	MAINT. AGREEMENT AREA	12	1+079.3	1+083.5									TH54 LENGTH 8.1M (26.6')									

<p>ACCT.GFunk \\vaof-cadd\flingcabline\196016\RightofWay\rcal6d.dgn DATE PLOTTED 11-DEC-2001</p>	<p>DR. (P)- DRAINAGE RIGHT DIT. (P)- DITCHING RIGHT CH. (P)- CHANNEL RT. DRIVE (T)- DRIVE RIGHT CUL. (P)- CULVERT RIGHT [W]- WATER SOURCES</p>	<p>PRESENT R.O.W. TAKING WITHOUT ACCESS TAKING WITHOUT ACCESS ALONG PROPERTY LINE TAKING WITH ACCESS PERMANENT EASEMENT TEMPORARY EASEMENT</p>	<p>LEGEND</p> <p>--- C&T (P) --- CLEARING & TRIMMING --- C.Z. (P) --- CLEAR ZONE --- CONST. (T) --- CONSTRUCTION EASEMENT SR SR SLOPE RIGHTS P PROPERTY LINE L TOP OF CUT O TOE OF SLOPE</p>	<p>--- UE (P) --- PERMANENT UTILITY EASEMENT</p> <p>APPROVED: <u>ROGER P. DUMAS</u> DATE: <u>02-26-01</u> CHIEF, PLANS & TITLES</p>	<p>R. O. W. PLANS</p> <p style="text-align: center;">BARTON STP 0113(58) S SHEET 11 OF 16</p>
--	--	--	--	---	---

MAY 30 2006



SEE SHEET 26 FOR DRAINAGE DETAILS

HEAVY DUTY STEEL BEAM GUARDRAIL
Sta 1+088.000 RT - Sta 1+130.000 RT
Sta 1+114.000 LT - Sta 1+130.000 LT
Sta 1+057.000 RT - Sta 3+150 RT

ANCHOR FOR STEEL BEAM RAIL
Sta 1+114.000 LT
Sta 1+057.000 RT

MANUFACTURED TERMINAL SECTION (TANGENT)
Sta 1+088.000 RT
Sta 3+150.000 RT

TREATED TIMBER CURB
Sta 1+116.000 LT - Sta 1+130.000 LT

CONSTRUCT TOWN HIGHWAY RAMP
Sta 1+078.000 RT

REMOVE EXISTING GUARDRAIL
Sta 1+091.000 RT - Sta 1+130.000 RT
Sta 1+124.000 LT - Sta 1+130.000 LT

BEGIN R.O.W. PROJECT STP 0113 (58) S
STA. 1+060.36 16.6 M (54.5') RT

THS4 CURVE #1 DATA

Radius:	6.000
Delta:	61°48'28"
Length:	6.472
Tangent:	3.591
Chord:	6.163
Mid Ordinate:	0.852
External:	0.993
Max. Bank Rate:	NORMAL

DURABLE 100mm WHITE LINE
Sta 1+020.000 LT - Sta 1+130.000 LT
Sta 1+020.000 RT - Sta 1+066.900 RT
Sta 1+083.100 RT - Sta 1+130.000 RT

DURABLE 100mm YELLOW LINE (DOUBLE CENTERLINE)
Sta 1+020.000 - Sta 1+068.900
Sta 1+081.100 - Sta 1+130.000

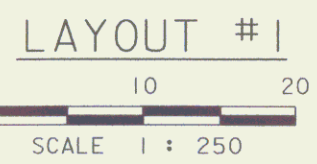
REMOVING SIGNS
Sta 1+036.400 RT
Sta 1+067.000 RT (2)
Sta 1+085.500 RT (3)

TEMPORARY 100mm WHITE LINE
Sta 1+020.000 LT - Sta 1+130.000 LT
Sta 1+020.000 RT - Sta 1+066.900 RT
Sta 1+083.100 RT - Sta 1+130.000 RT

TEMPORARY 100mm YELLOW LINE (DOUBLE CENTERLINE)
Sta 1+020.000 - Sta 1+068.900
Sta 1+081.100 - Sta 1+130.000

DATUM

VERTICAL	ASSUMED
HORIZONTAL	NAD 83 (93)



LEGEND

▬ HAY BALES

▬ SILT FENCE

LINES SHOWN ON THIS PLAN AS EXISTING PROPERTY LINES (P/L) ARE BELIEVED TO BE ACCURATE BUT SHOULD NOT BE RELIED UPON FOR PURPOSES UNRELATED TO THE STATE OF VERMONT'S ACQUISITION OF LAND AND RIGHTS FOR THIS PROJECT.

PROJECT: BARTON	PROJECT NO.: STP 0113 (58) S
DESIGN FILE NAME: 96c116/structures/sc116bdr.dgn	PLOT DATE: 28-NOV-2001
IPARM FILE NAME: sc1161a1.1	SURVEY DATE: 8/96, 5/99
SURVEYED BY: R. BULLOCK, R. GILMAN	DRAWN BY: P. C. JARVIS
SQUAD LEADER: C. P. WILLIAMS	84 OF 120
R.O.W. SHEET 12 OF 16 SHEETS	

MAY 30 2006

FOR R.O.W. USE ONLY

HEAVY DUTY STEEL BEAM GUARDRAIL
Sta 1+130.000 RT - Sta 1+235.000 RT
Sta 1+130.000 LT - Sta 1+235.000 LT

TREATED TIMBER CURB
Sta 1+130.000 LT - Sta 1+235.000 LT

REMOVE EXISTING GUARDRAIL
Sta 1+130.000 RT - Sta 1+235.000 RT
Sta 1+130.000 LT - Sta 1+235.000 LT

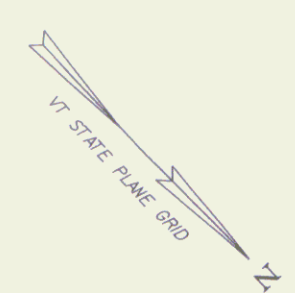
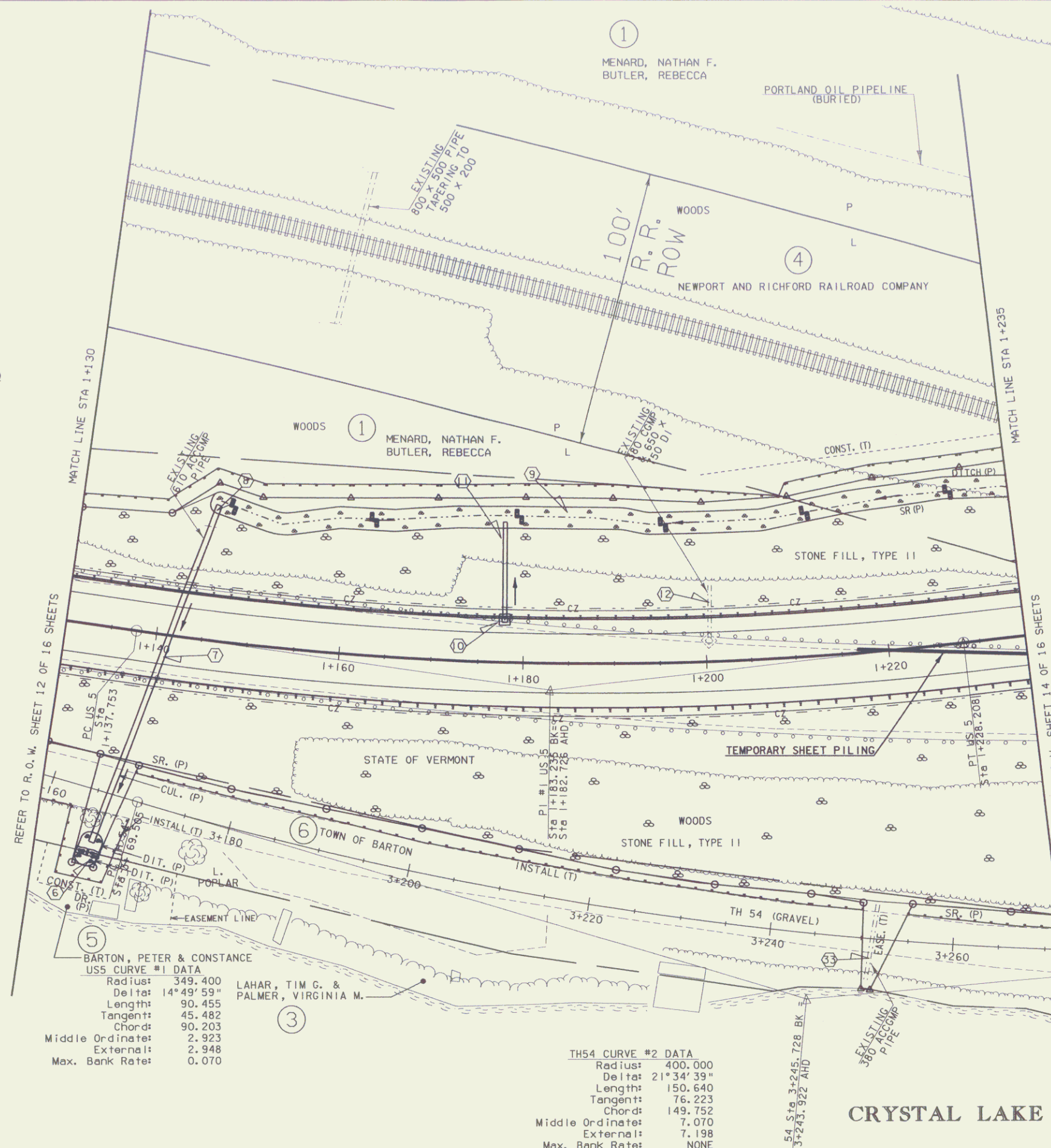
DURABLE 100mm WHITE LINE
Sta 1+130.000 LT - Sta 1+235.000 LT
Sta 1+130.000 RT - Sta 1+235.000 RT

DURABLE 100mm YELLOW LINE (DOUBLE CENTERLINE)
Sta 1+130.000 - Sta 1+235.000

TEMPORARY 100mm WHITE LINE
Sta 1+130.000 LT - Sta 1+235.000 LT
Sta 1+130.000 RT - Sta 1+235.000 RT

TEMPORARY 100mm YELLOW LINE (DOUBLE CENTERLINE)
Sta 1+130.000 - Sta 1+235.000

150 mm UNDERDRAIN
Sta 1+200.000 LT - Sta 1+235.000 LT



REFER TO R.O.W. SHEET 1.2 OF 1.6 SHEETS

REFER TO R.O.W. SHEET 1.4 OF 1.6 SHEETS

BARTON, PETER & CONSTANCE
USS CURVE #1 DATA
Radius: 349.400 LAHAR, TIM G. &
Delta: 14° 49' 59" PALMER, VIRGINIA M.
Length: 90.455
Tangent: 45.482
Chord: 90.203
Middle Ordinate: 2.923
External: 2.948
Max. Bank Rate: 0.070

TH54 CURVE #2 DATA
Radius: 400.000
Delta: 21° 34' 39"
Length: 150.640
Tangent: 76.223
Chord: 149.752
Middle Ordinate: 7.070
External: 7.198
Max. Bank Rate: NONE

LEGEND

▬▬▬▬ HAY BALES

▬▬▬▬ SILT FENCE

FOR R.O.W. USE ONLY

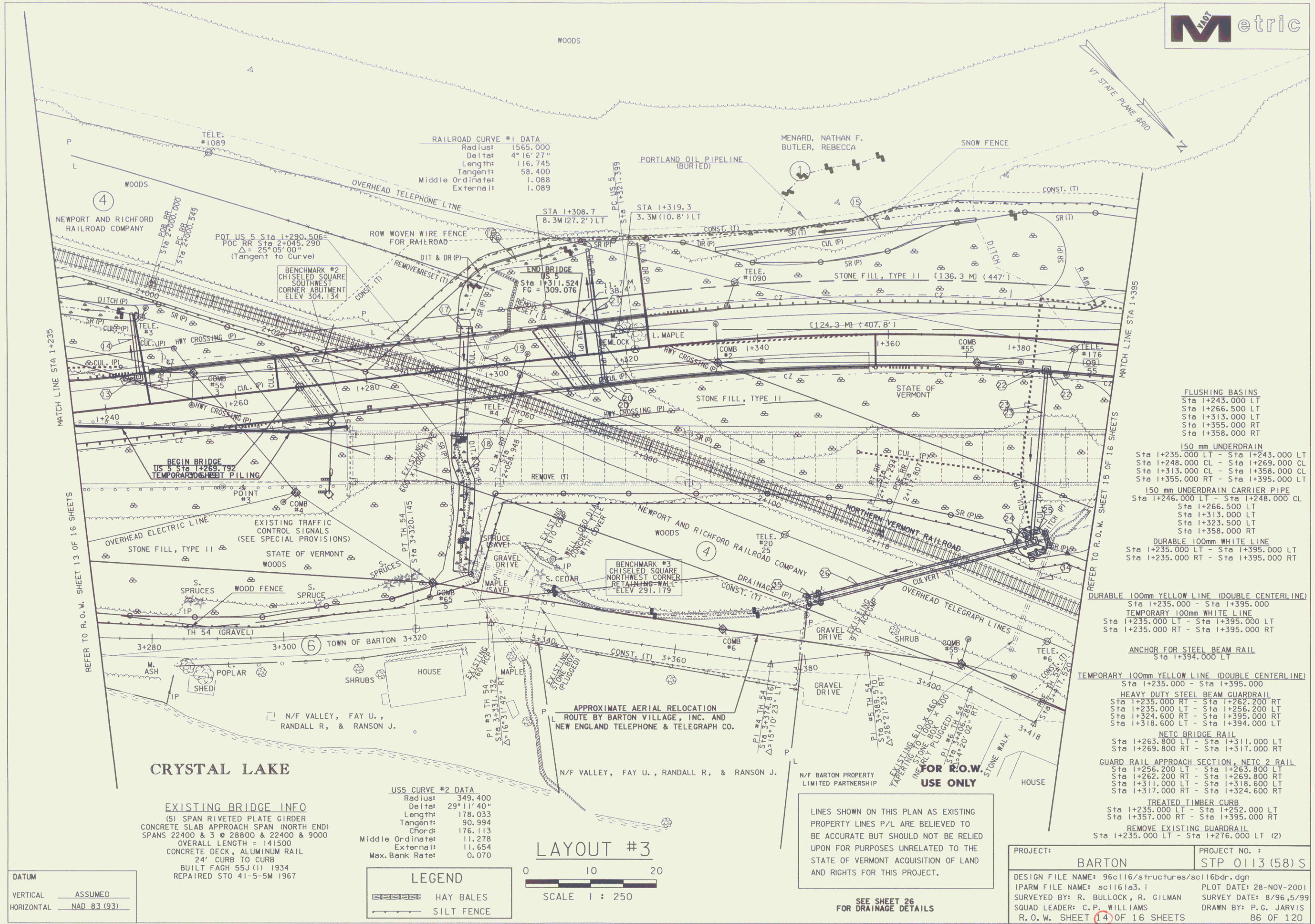
LINES SHOWN ON THIS PLAN AS EXISTING PROPERTY LINES (P/L) ARE BELIEVED TO BE ACCURATE BUT SHOULD NOT BE RELIED UPON FOR PURPOSES UNRELATED TO THE STATE OF VERMONT'S ACQUISITION OF LAND AND RIGHTS FOR THIS PROJECT.

DATUM
VERTICAL ASSUMED
HORIZONTAL NAD 83 (93)

SEE SHEET 26 FOR DRAINAGE DETAILS

LAYOUT #2
0 10 20
SCALE 1 : 250

PROJECT: BARTON	PROJECT NO.: STP 0113 (58) S
DESIGN FILE NAME: 96c116/structures/sc116bd.dgn	PLOT DATE: 28-NOV-2001
IPARM FILE NAME: sc116a2.i	SURVEY DATE: 8/96,5/99
SURVEYED BY: R. BULLOCK, R. GILMAN	SQUAD LEADER: C.P. WILLIAMS
R.O.W. SHEET 1.3 OF 1.6 SHEETS	85 OF 120



RAILROAD CURVE #1 DATA
 Radius: 1565.000
 Delta: 4° 16' 27"
 Length: 116.745
 Tangent: 58.400
 Middle Ordinate: 1.088
 External: 1.089

EXISTING BRIDGE INFO
 (5) SPAN RIVETED PLATE GIRDER
 CONCRETE SLAB APPROACH SPAN (NORTH END)
 SPANS 22400 & 3 @ 28800 & 22400 & 9000
 OVERALL LENGTH = 141500
 CONCRETE DECK, ALUMINUM RAIL
 24' CURB TO CURB
 BUILT FAGH 55J (1) 1934
 REPAIRED STO 41-5-5M 1967

US5 CURVE #2 DATA
 Radius: 349.400
 Delta: 29° 11' 40"
 Length: 178.033
 Tangent: 90.394
 Chord: 176.113
 Middle Ordinate: 11.278
 External: 11.654
 Max. Bank Rate: 0.070

LEGEND
 HAY BALES
 SILT FENCE

LAYOUT #3
 0 10 20
 SCALE 1" = 250'

LINES SHOWN ON THIS PLAN AS EXISTING
 PROPERTY LINES P/L ARE BELIEVED TO
 BE ACCURATE BUT SHOULD NOT BE RELIED
 UPON FOR PURPOSES UNRELATED TO THE
 STATE OF VERMONT ACQUISITION OF LAND
 AND RIGHTS FOR THIS PROJECT.

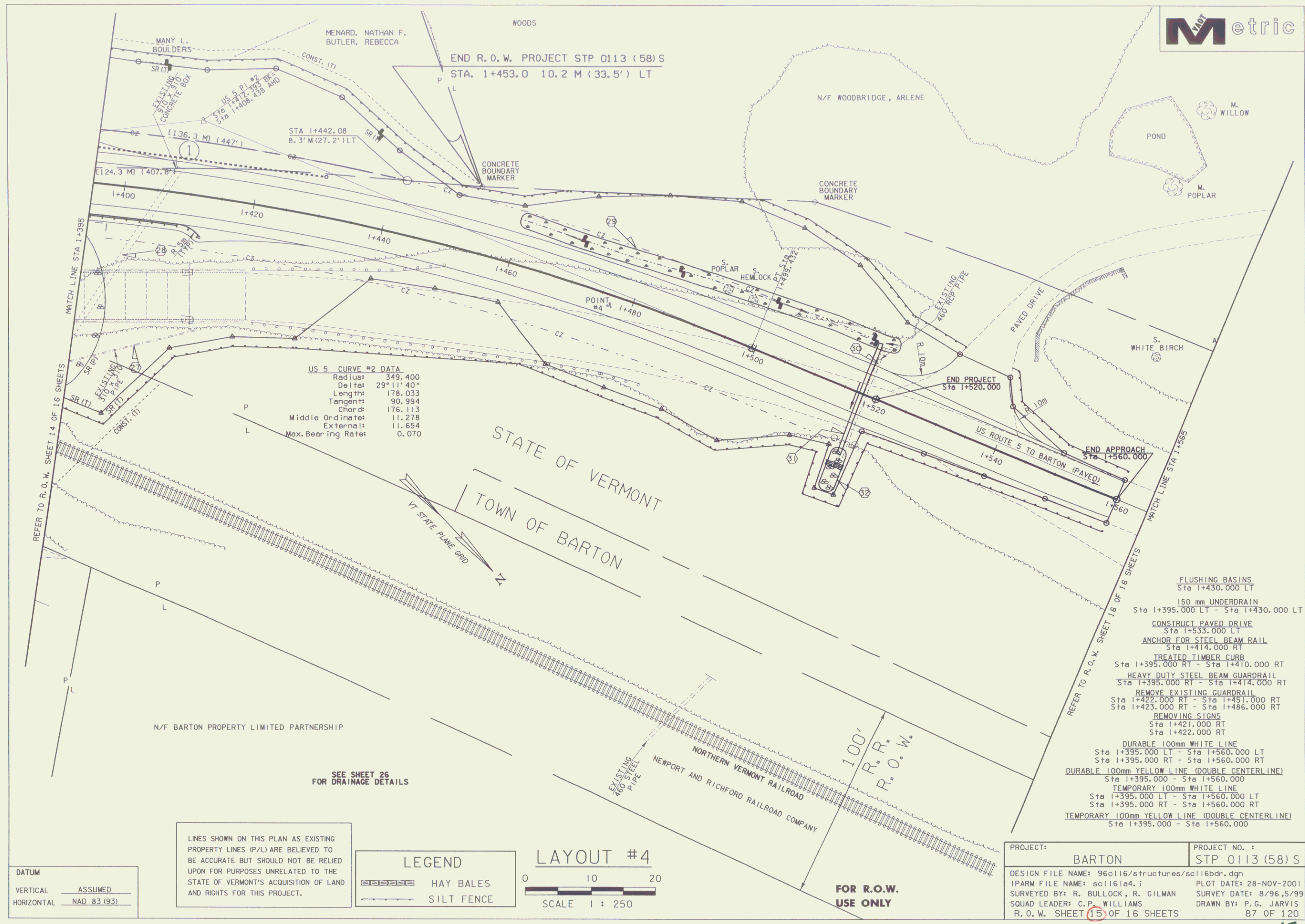
SEE SHEET 26
 FOR DRAINAGE DETAILS

- FLUSHING BASINS
 Sta 1+243.000 LT
 Sta 1+266.500 LT
 Sta 1+313.000 LT
 Sta 1+355.000 RT
 Sta 1+358.000 RT
- 150 mm UNDERDRAIN
 Sta 1+235.000 LT - Sta 1+243.000 LT
 Sta 1+248.000 CL - Sta 1+269.000 CL
 Sta 1+313.000 CL - Sta 1+358.000 CL
 Sta 1+355.000 RT - Sta 1+395.000 RT
- 150 mm UNDERDRAIN CARRIER PIPE
 Sta 1+246.000 LT - Sta 1+248.000 CL
 Sta 1+266.500 LT
 Sta 1+313.000 LT
 Sta 1+323.500 LT
 Sta 1+358.000 RT
- DURABLE 100mm WHITE LINE
 Sta 1+235.000 LT - Sta 1+395.000 LT
 Sta 1+235.000 RT - Sta 1+395.000 RT
- DURABLE 100mm YELLOW LINE (DOUBLE CENTERLINE)
 Sta 1+235.000 - Sta 1+395.000
- TEMPORARY 100mm WHITE LINE
 Sta 1+235.000 LT - Sta 1+395.000 LT
 Sta 1+235.000 RT - Sta 1+395.000 RT
- ANCHOR FOR STEEL BEAM RAIL
 Sta 1+394.000 LT
- TEMPORARY 100mm YELLOW LINE (DOUBLE CENTERLINE)
 Sta 1+235.000 - Sta 1+395.000
- HEAVY DUTY STEEL BEAM GUARDRAIL
 Sta 1+235.000 RT - Sta 1+262.200 RT
 Sta 1+235.000 LT - Sta 1+256.200 LT
 Sta 1+324.600 RT - Sta 1+395.000 RT
 Sta 1+318.600 LT - Sta 1+394.000 LT
- NETC BRIDGE RAIL
 Sta 1+263.800 LT - Sta 1+311.000 LT
 Sta 1+269.800 RT - Sta 1+317.000 RT
- GUARD RAIL APPROACH SECTION, NETC 2 RAIL
 Sta 1+256.200 LT - Sta 1+263.800 LT
 Sta 1+262.200 RT - Sta 1+269.800 RT
 Sta 1+311.000 LT - Sta 1+318.600 LT
 Sta 1+317.000 RT - Sta 1+324.600 RT
- TREATED TIMBER CURB
 Sta 1+235.000 LT - Sta 1+252.000 LT
 Sta 1+357.000 RT - Sta 1+395.000 RT
- REMOVE EXISTING GUARDRAIL
 Sta 1+235.000 LT - Sta 1+276.000 LT (2)

PROJECT: **BARTON** PROJECT NO.: **STP 0113 (58) S**
 DESIGN FILE NAME: 96c116/structures/sc116bdr.dgn
 IPARM FILE NAME: sc1161a3.i PLOT DATE: 28-NOV-2001
 SURVEYED BY: R. BULLOCK, R. GILMAN SURVEY DATE: 8/96, 5/99
 SQUAD LEADER: C.P. WILLIAMS DRAWN BY: P.G. JARVIS
 R.O.W. SHEET 14 OF 16 SHEETS 86 OF 120

MAY 30 2006

14



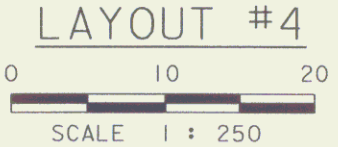
US 5 CURVE #2 DATA
 Radius: 349.400
 Delta: 29° 11' 40"
 Length: 178.033
 Tangent: 90.994
 Chord: 176.113
 Middle Ordinate: 11.278
 External: 11.654
 Max. Bearing Rate: 0.070

- FLUSHING BASINS
Sta 1+430.000 LT
- 150 mm UNDERDRAIN
Sta 1+395.000 LT - Sta 1+430.000 LT
- CONSTRUCT PAVED DRIVE
Sta 1+533.000 LT
- ANCHOR FOR STEEL BEAM RAIL
Sta 1+414.000 RT
- TREATED TIMBER CURB
Sta 1+395.000 RT - Sta 1+410.000 RT
- HEAVY DUTY STEEL BEAM GUARDRAIL
Sta 1+395.000 RT - Sta 1+414.000 RT
- REMOVE EXISTING GUARDRAIL
Sta 1+422.000 RT - Sta 1+451.000 RT
- Sta 1+423.000 RT - Sta 1+486.000 RT
- REMOVING SIGNS
Sta 1+421.000 RT
- Sta 1+422.000 RT
- DURABLE 100mm WHITE LINE
Sta 1+395.000 LT - Sta 1+560.000 LT
- Sta 1+395.000 RT - Sta 1+560.000 RT
- DURABLE 100mm YELLOW LINE (DOUBLE CENTERLINE)
Sta 1+395.000 - Sta 1+560.000
- TEMPORARY 100mm WHITE LINE
Sta 1+395.000 LT - Sta 1+560.000 LT
- Sta 1+395.000 RT - Sta 1+560.000 RT
- TEMPORARY 100mm YELLOW LINE (DOUBLE CENTERLINE)
Sta 1+395.000 - Sta 1+560.000

SEE SHEET 26 FOR DRAINAGE DETAILS

LINES SHOWN ON THIS PLAN AS EXISTING PROPERTY LINES (P/L) ARE BELIEVED TO BE ACCURATE BUT SHOULD NOT BE RELIED UPON FOR PURPOSES UNRELATED TO THE STATE OF VERMONT'S ACQUISITION OF LAND AND RIGHTS FOR THIS PROJECT.

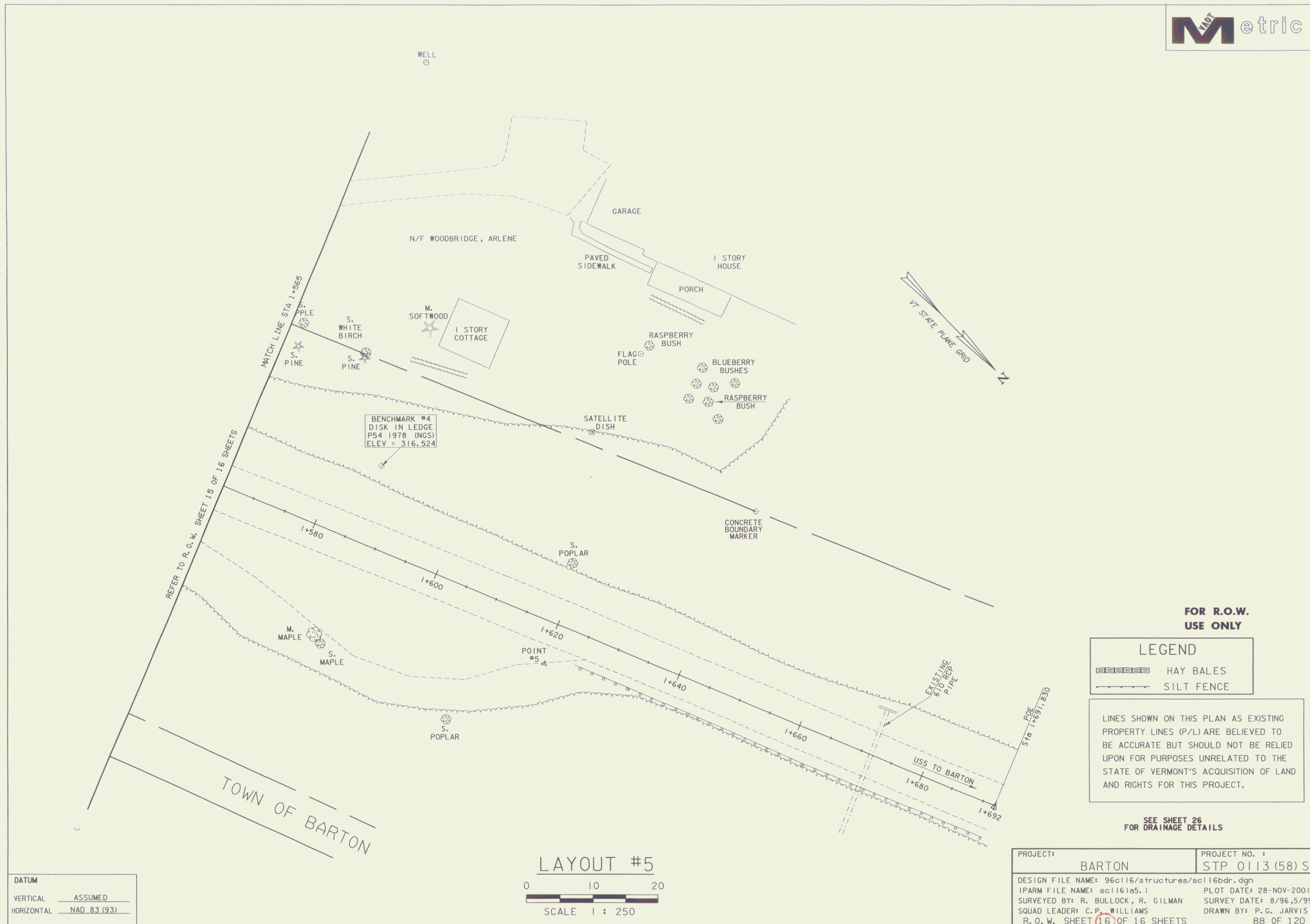
LEGEND	
	HAY BALES
	SILT FENCE



DATUM	
VERTICAL	ASSUMED
HORIZONTAL	NAD 83 (93)

PROJECT: BARTON	PROJECT NO.: STP 0113 (58) S
DESIGN FILE NAME: 96c116/structures/sc116bdr.dgn	PLOT DATE: 28-NOV-2001
IPARM FILE NAME: sc116a4.i	SURVEY DATE: 8/96,5/99
SURVEYED BY: R. BULLOCK, R. GILMAN	DRAWN BY: P.G. JARVIS
SQUAD LEADER: C.P. WILLIAMS	87 OF 120
R.O.W. SHEET 15 OF 16 SHEETS	

MAY 30 2006



FOR R.O.W. USE ONLY

LEGEND

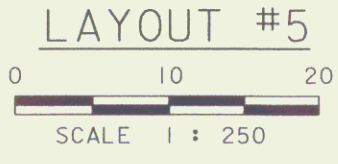
▬▬▬▬ HAY BALES

▬▬▬▬ SILT FENCE

LINES SHOWN ON THIS PLAN AS EXISTING PROPERTY LINES (P/L) ARE BELIEVED TO BE ACCURATE BUT SHOULD NOT BE RELIED UPON FOR PURPOSES UNRELATED TO THE STATE OF VERMONT'S ACQUISITION OF LAND AND RIGHTS FOR THIS PROJECT.

SEE SHEET 26 FOR DRAINAGE DETAILS

DATUM	
VERTICAL	ASSUMED
HORIZONTAL	NAD 83 (93)



PROJECT:	BARTON	PROJECT NO. :	STP 0113 (58) S
DESIGN FILE NAME:	96c116/structures/sc116bdr.dgn	PLOT DATE:	28-NOV-2001
IPARM FILE NAME:	sc1161a5.i	SURVEY DATE:	8/96, 5/99
SURVEYED BY:	R. BULLOCK, R. GILMAN	DRAWN BY:	P. G. JARVIS
SQUAD LEADER:	C. P. WILLIAMS	R. O. W. SHEET	16 OF 16 SHEETS
			88 OF 120

MAY 30 2006

16