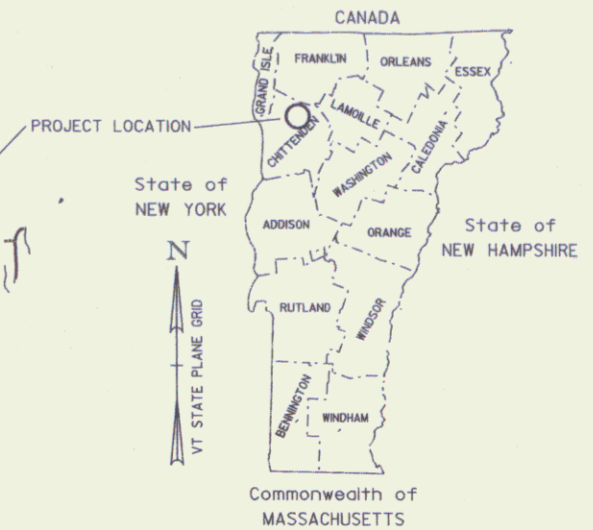
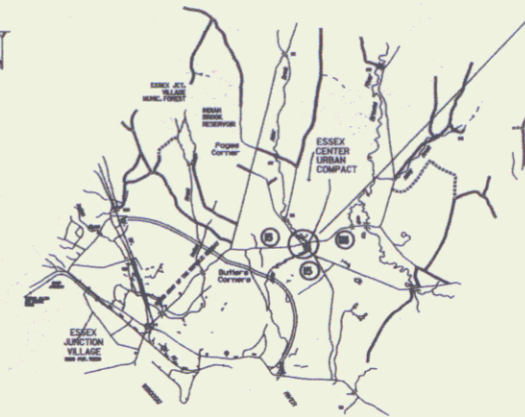


R. O. W. PLANS

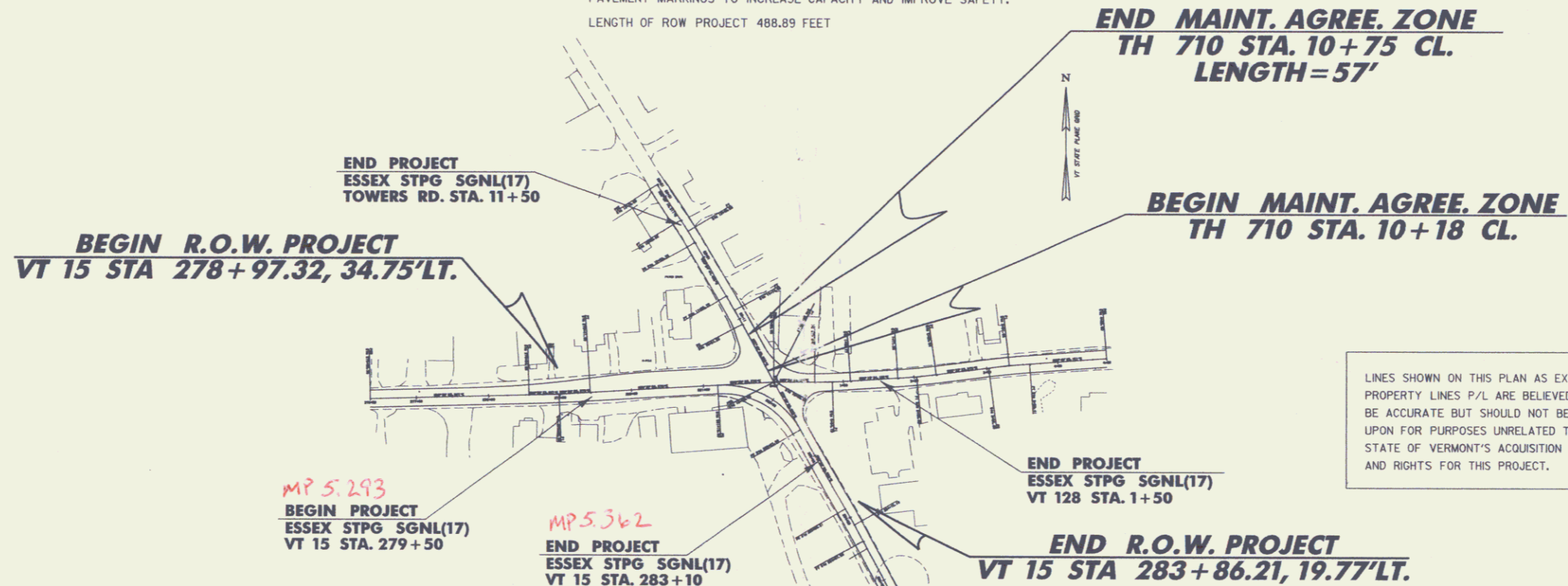
STATE OF VERMONT
AGENCY OF TRANSPORTATION



TOWN OF ESSEX
COUNTY OF CHITTENDEN
INTERSECTION OF VT 15 & VT 128

TOWN OF ESSEX, VT IS AT THE INTERSECTION OF VT 128 & TOWERS RD. (MM 5.34).

WORK UNDER THIS PROJECT INCLUDES INSTALLING A NEW TRAFFIC SIGNAL SYSTEM, UPGRADING PEDESTRIAN CROSSINGS, NEW SIGNS, PAVING, AND PAVEMENT MARKINGS TO INCREASE CAPACITY AND IMPROVE SAFETY.
LENGTH OF ROW PROJECT 488.89 FEET



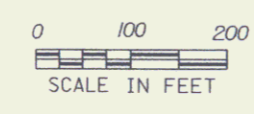
LINES SHOWN ON THIS PLAN AS EXISTING PROPERTY LINES P/L ARE BELIEVED TO BE ACCURATE BUT SHOULD NOT BE RELIED UPON FOR PURPOSES UNRELATED TO THE STATE OF VERMONT'S ACQUISITION OF LAND AND RIGHTS FOR THIS PROJECT.

CONVENTIONAL SYMBOLS

COUNTY LINE	
TOWN LINE	
LIMITS OF ACCESS	
POINT OF ACCESS	
FENCE LINE	
STONE WALL	
TRAVELED WAY	
GUARD RAIL	
RAILROAD	
SURVEY LINE	
CULVERT	
POWER POLE	
TELEPHONE POLE	
TREES	
CONTROL OF ACCESS	
PROPERTY LINE	
R.O.W. TAKING LINE	
SLOPE RIGHTS	
TOP OF CUT	
TOE OF SLOPE	

SURVEYED BY : L. ORVIS
SURVEYED DATE : 10/98
DATUM
VERTICAL NAVD88
HORIZONTAL NAD83(92)

ALL DRIVES AS INDICATED ON PLANS ARE SUBJECT TO PERMITS PURSUANT TO TITLE 19 SECTION III, V.S.A.



THESE PLANS ARE SUBJECT TO SUCH ENGINEERING CHANGES AS MAY BE REQUIRED BY THE FEDERAL HIGHWAY ADMINISTRATION OR THE DIRECTOR OF PROJECT DEVELOPMENT.
CONSTRUCTION IS TO BE CARRIED ON IN ACCORDANCE WITH THESE PLANS AND THE STANDARD SPECIFICATIONS FOR CONSTRUCTION DATED 2001, AS APPROVED BY THE FEDERAL HIGHWAY ADMINISTRATION ON JANUARY 4, 2001 FOR USE ON THIS PROJECT, INCLUDING ALL SUBSEQUENT REVISIONS AND SUCH REVISED SPECIFICATIONS AND SPECIAL PROVISIONS AS ARE INCORPORATED IN THESE PLANS.

P.in #96B182
Route VT15
PLOTTED:17-NOV-2004

APPROVED *[Signature]* DATE 3/8/05
Director of Program Development

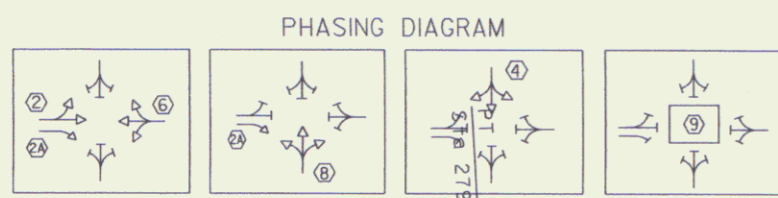
APPROVED *[Signature]* DATE 3/8/05
Chief of Right of Way

ESSEX
STPG SGNL(17)
R.O.W. SHEET 1 OF 5 SHEETS

/tr of /96b182/1b182bdr.dgn/1b182111.1

CONTROLLER TIMING CHART								
LOCAL PROGRAMMING	PHASE							
	1	2	3	4	5	6	7	8
MINIMUM GREEN		8		8		8		8
EXTENSION		2		2		2		2
YELLOW CLEARANCE		4		4		4		4
ALL RED CLEARANCE		2		2		2		2
MAXIMUM GREEN		18		14		34		9
RECALL		MIN		OFF		MIN		OFF
MEMORY		NON		NON		NON		LOCK

* - CONTROLLER TO OPERATE ABOVE TIMINGS FROM 6:30AM-9:30PM



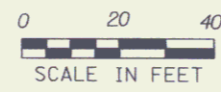
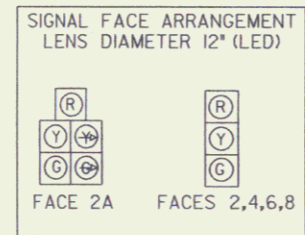
BEGIN PROJECT
ESSEX STPG SGNL(17)
VT 15 STA. 279+56.9

END PROJECT
ESSEX STPG SGNL(17)
TOWERS RD. STA. 11+50

VEHICLE DETECTOR LOOPS								
LOOP NO.	LANE	CALL #	SIZE	TYPE & NO. TURNS	DELAY OR PRESENCE	INDUCTANCE CALC. ACT.	RESISTANCE CALC. ACT.	LEAKAGE TO GROUND
2	EB	2	6x40	QUAD-2	PRESENCE	397	1.33	
2A	EB RT	2	6x40	QUAD-2	PRESENCE	392	1.26	
4	SB	4	6x40	QUAD-2	PRESENCE	365	0.91	
6	WB	4	6x40	QUAD-2	PRESENCE	348	0.69	
8	NB	8	6x40	QUAD-2	PRESENCE	363	0.88	

* - INDUCTANCE IN MICROHENRIES
 * - RESISTANCE IN OHMS (@77 DEGREES FAHRENHEIT)

- NOTES:
1. THE CONTRACTOR SHALL BE RESPONSIBLE TO CONFIRM THE LOCATION OF ANY EXISTING TRAFFIC SIGNAL CONDUIT, PULLBOXES, LOOP LEAD-IN'S, AND THE ROUTING OF THE ELECTRICAL WIRING (CIRCUITS) ASSOCIATED WITH THESE ITEMS. THE COST OF THIS WORK SHALL BE CONSIDERED A PART OF THE 'TRAFFIC SIGNAL' ITEM 678.15.
 2. ALL EXISTING SIGNAL EQUIPMENT IS THE RESPONSIBILITY OF THE CONTRACTOR AND MUST BE DISPOSED OF. REMOVAL OF EQUIPMENT SHALL INCLUDE REMOVAL OF CONCRETE BASES AND BACKFILL OF HOLES. REMOVAL TO BE PAID SUBSIDIARY TO 'TRAFFIC SIGNAL' ITEM 678.15.
 3. CALL DIG SAFE PRIOR TO PERFORMING ANY EXCAVATION WORK.
 4. THE CONTRACTOR SHALL BE RESPONSIBLE TO CONFIRM THE ACTUAL LOCATION OF THE EXISTING UNDERGROUND FACILITIES PRIOR TO EXCAVATING. ANY DAMAGE SHALL BE REPAIRED AT THE CONTRACTORS EXPENSE.



END PROJECT
ESSEX STPG SGNL(17)
VT 15 STA. 283+10

EXISTING	NEW	LEGEND
□	■	UTILITY POLE
○	●	LUMINAIRE
○	●	LIGHT OR WOOD POLE
○	●	STRAIN POLE
□	■	CONTROLLER CABINET
□	■	PULLBOX/JUNCTION BOX
○	●	SIGNAL HEAD
—	—	CONDUIT
—	—	VEHICLE LOOPS
○	●	PEDESTAL POST
□	■	STANCHION
—	—	SWEEP

NEW MAST ARM DESIGN

PROJECT NAME: ESSEX
 PROJECT NUMBER: STPG SGNL(17)

FILE NAME: fb182tr2.dgn/fb182tr.f1
 PROJECT LEADER:
 DESIGNED BY:

PLOT DATE: 10-AUG-2004
 DRAWN BY:
 CHECKED BY:

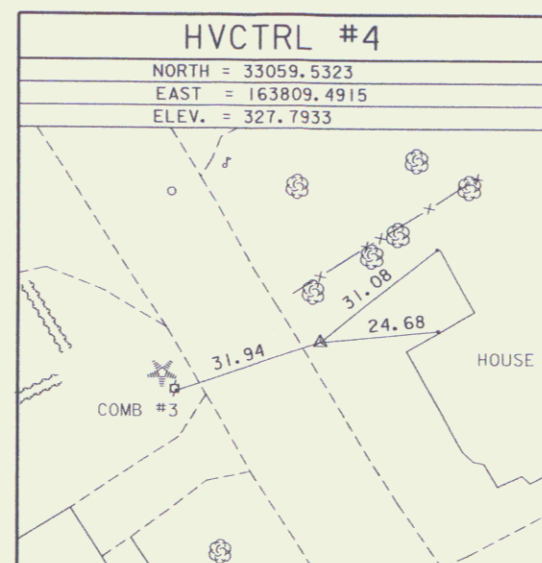
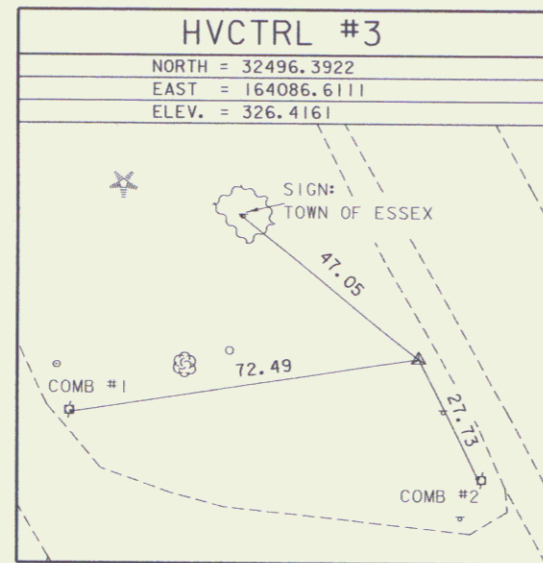
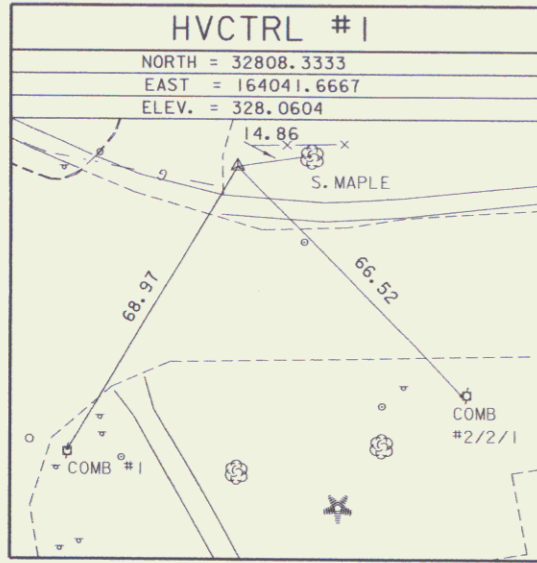
R.O.W. SHEET 2 OF 5



GPS CONTROL POINTS

NO GPS CONTROL POINT: CONTROL WAS ASSUMED

TRAVERSE TIES



NORTH =
 EAST =
 ELEV. =

NORTH =
 EAST =
 ELEV. =

* MAIN TRAVERSE COMPLETED: DEC. 18, 2000 BY L. ORVIS PC & J. HULETT

ALIGNMENT TIES

NORTH =
 EAST =

NORTH =
 EAST =

NORTH =
 EAST =

NORTH =
 EAST =

NORTH =
 EAST =

DATUM	
VERTICAL	ASSUMED
HORIZONTAL	ASSUMED
ADJUSTMENT	NONE

PROJECT NAME: ESSEX
 PROJECT NUMBER: STPG SGNL (17)

FILE NAME: x96bi82+1.dgn
 PROJECT LEADER:
 DESIGNED BY:

PLOT DATE: 09-NOV-2004
 DRAWN BY: J.HULETT
 CHECKED BY: P.HODGE
 R.O.W. SHEET 3 OF 5 SHEETS

RIGHT - OF - WAY DETAIL SHEET

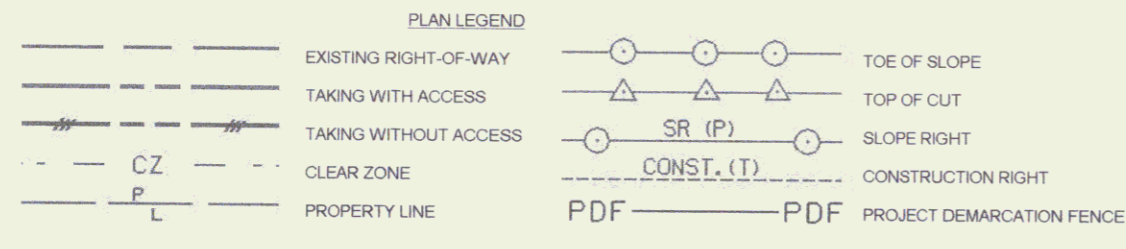
TABLE OF PROPERTY ACQUISITION

PARCEL NO.	PROPERTY OWNER	SHEET NO.	BEGINNING STATION	ENDING STATION	TAKE AREA±	REMAINDER AREA±	RIGHT			RECORDING DATA				REMARKS
							TYPE	(T)(P)	AREA ±	TITLE	DATE	TOWN / CITY	BOOK	
1A	COTA, HENRY C. & SHIRLEY W.	5	VT15 281+07 LT. VT15 281+26 LT. TH710 10+73 LT.	VT15 281+49.64 LT. VT15 281+24 LT.	450 SF		SLOPE LANDSCAPE SLOPE	(T) (T) (T)	48 SF 39 SF	WD	07/13/06	ESSEX	692 616-617	TRIM 10" MAPLE AS NEEDED
1B		5	VT15 278+97.32 LT.	VT15 281+87.84 LT.	0.23A		ALL R.T. & I.							VT RTE. 15 & TH710 HWY. EASE: 9890 SF±
2A	RUSSELL, JOHN A. & LYNN A.	5	TH710 10+75.00 RT. TH710 10+60 RT. VT128 0+91 LT. VT128 0+95 LT. VT128 0+77 LT. TH710 10+71 RT. VT 128 0+91 LT.	VT128 1+00.00 LT. TH710 10+71 RT. VT128 1+50 LT. VT128 0+64 LT.	1280 SF		INSTALL SLOPE INSTALL DRIVE SLOPE INSTALL	(T) (T) (T) (T) (T) (T)	107 SF 193 SF 690 SF	WD	06/09/06	ESSEX	688 617-618	CONCRETE CURB / CONCRETE CURB ✓ 24" WIDE MM 0001 CONCRETE CURB ✓
2B		5	TH710 10+75.00 RT.	VT128 2+05.95 RT.	0.15A		ALL R.T. & I.							VT RTE. 128 & TH710 HWY. EASE: 6430 SF±
3A	KATHERINE S. REYNOLDS, TRUSTEE OF THE KATHERINE S. REYNOLDS FAMILY TRUST AND THE RAYMOND H. REYNOLDS FAMILY TRUST	5	VT15 281+19.80 RT. VT15 281+23 RT.	VT15 281+61.65 RT. VT15 281+62 RT.	110 SF		SLOPE	(T)	90 SF			ESSEX		PAVED
3B		5	VT15 279+13.02 LT.	VT15 281+58.87 RT.	0.17A		ALL R.T. & I.							VT RTE. 15 HWY. EASE: 7500 SF±
4A	TOWN OF ESSEX	5	VT15 281+58.87 RT. VT15 281+61.65 RT. VT15 282+54 RT. VT15 283+16 RT.	VT15 283+86.21 RT. VT15 283.23.6 RT. VT15 283+61 RT.	950 SF		SLOPE INSTALL & MAINTAIN DRIVE	(T) (P) (T)	0.10A	QCD	04/10/06	ESSEX	683 461-462	SLOPE AND PAVE: 4,260 SF± PIPES AND DRAIN INLET 26" WIDE MM 0534
4B		5	VT15 281+49.80 LT.	VT15 283+86.21 LT.	0.36A		ALL R.T. & I.							VT RTE. 15 & 128 HWY. EASE: 15,680 SF±
4C		5	TH710 10+75.00 LT.	TH710 10+28.26 RT.	1650 SF		ALL R.T. & I.							TH710 HWY. EASE
5	GREEN MOUNTAIN POWER CORPORATION													UTILITY
6	VERMONT GAS SYSTEMS, INC.													UTILITY
7	ADELPHIA CABLE COMMUNICATIONS													UTILITY
8	VERIZON NEW ENGLAND, INC.													UTILITY
	MAINTENANCE AGREEMENT ZONE	5	TH 710 10+18 CL	TH710 10+75 CL										LENGTH =57'

TABLE OF REVISIONS

REVISION NO.	SHEET NO.	DESCRIPTION	DATE
1	4	PARCEL NO. 2 RUSSELL, ADD ENDING STATION OF TH 710 10+71 RT., 107 S.F.± FOR INSTALL (T). PER C.O. 9452 MADE BY JB APPROVED BY RD	05/15/06

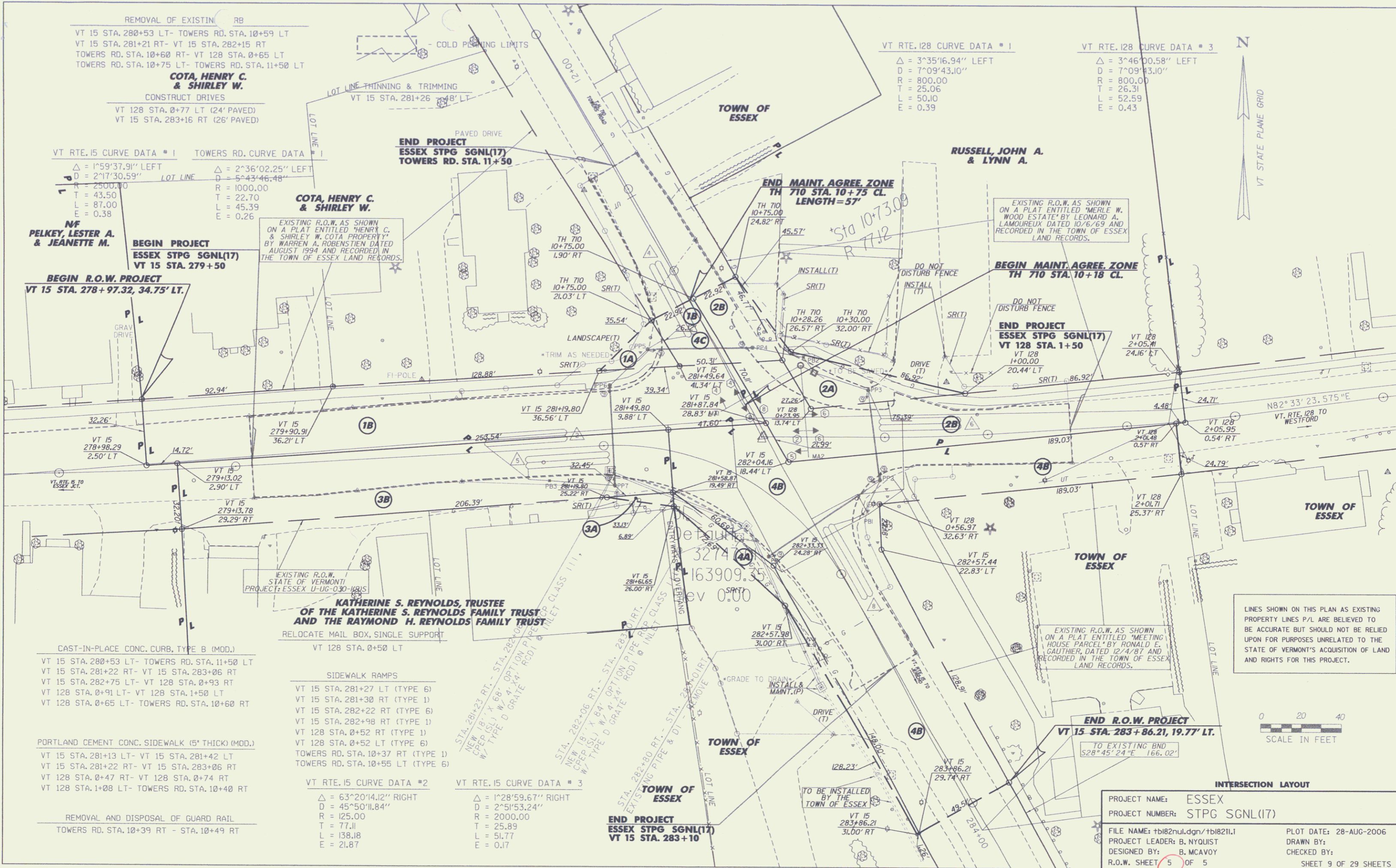
PLOT DATE 07/24/06



- (P) -PERMANENT
- (T) -TEMPORARY
- DR -DRAINAGE RIGHT
- DIT -DITCHING RIGHT
- CH -CHANNEL RIGHT
- DRIVE -DRIVE RIGHT
- CUL -CULVERT RIGHT
- C&T -CLEARING & TRIMMING RIGHT
- SR -SLOPE RIGHT
- UE -UTILITY EASEMENT

APPROVED: ROGER P. DUMAS DATE: 03-18-05
CHIEF, PLANS & TITLES

PROJECT NAME:	ESSEX
PROJECT NUMBER:	STPG SGNL(17)
FILE NAME:	96b182det.xls
PROJECT LEADER:	B. NYQUIST
DESIGNED BY:	B. MCAVOY
R.O.W. SHEET 4 OF 5 SHEETS	
PLOT DATE:	
DRAWN BY:	G. FUNK
CHECKED BY:	E. PIERCE
SHEET 8 OF 29	



REMOVAL OF EXISTING RB
 VT 15 STA. 280+53 LT- TOWERS RD. STA. 10+59 LT
 VT 15 STA. 281+21 RT- VT 15 STA. 282+15 RT
 TOWERS RD. STA. 10+60 RT- VT 128 STA. 0+65 LT
 TOWERS RD. STA. 10+75 LT- TOWERS RD. STA. 11+50 LT
COTA, HENRY C. & SHIRLEY W.
 CONSTRUCT DRIVES
 VT 128 STA. 0+77 LT (24' PAVED)
 VT 15 STA. 283+16 RT (26' PAVED)

VT RTE. 15 CURVE DATA # 1
 $\Delta = 1^{\circ}59'37.91''$ LEFT
 $D = 2^{\circ}17'30.59''$
 $R = 2900.00$
 $T = 43.50$
 $L = 87.00$
 $E = 0.39$

VF PELKEY, LESTER A. & JEANNETTE M.
BEGIN PROJECT ESSEX STPG SGNL(17)
 VT 15 STA. 279+50

BEGIN R.O.W. PROJECT
 VT 15 STA. 278+97.32, 34.75' LT.

CAST-IN-PLACE CONC. CURB, TYPE B (MOD.)
 VT 15 STA. 280+53 LT- TOWERS RD. STA. 11+50 LT
 VT 15 STA. 281+22 RT- VT 15 STA. 283+06 RT
 VT 15 STA. 282+75 LT- VT 128 STA. 0+93 RT
 VT 128 STA. 0+91 LT- VT 128 STA. 1+50 LT
 VT 128 STA. 0+65 LT- TOWERS RD. STA. 10+60 RT

PORTLAND CEMENT CONC. SIDEWALK (5" THICK) (MOD.)
 VT 15 STA. 281+13 LT- VT 15 STA. 281+42 LT
 VT 15 STA. 281+22 RT- VT 15 STA. 283+06 RT
 VT 128 STA. 0+47 RT- VT 128 STA. 0+74 RT
 VT 128 STA. 1+08 LT- TOWERS RD. STA. 10+40 RT

REMOVAL AND DISPOSAL OF GUARD RAIL
 TOWERS RD. STA. 10+39 RT - STA. 10+49 RT

KATHERINE S. REYNOLDS, TRUSTEE OF THE KATHERINE S. REYNOLDS FAMILY TRUST AND THE KAYMOND H. REYNOLDS FAMILY TRUST
 RELOCATE MAIL BOX, SINGLE SUPPORT
 VT 128 STA. 0+50 LT

SIDEWALK RAMPS
 VT 15 STA. 281+27 LT (TYPE 6)
 VT 15 STA. 281+30 RT (TYPE 1)
 VT 15 STA. 282+22 RT (TYPE 6)
 VT 15 STA. 282+98 RT (TYPE 1)
 VT 128 STA. 0+52 RT (TYPE 1)
 VT 128 STA. 0+52 LT (TYPE 6)
 TOWERS RD. STA. 10+37 RT (TYPE 1)
 TOWERS RD. STA. 10+55 LT (TYPE 6)

VT RTE. 15 CURVE DATA # 2
 $\Delta = 63^{\circ}20'14.2''$ RIGHT
 $D = 45^{\circ}50'11.84''$
 $R = 125.00$
 $T = 77.11$
 $L = 138.18$
 $E = 21.87$

VT RTE. 15 CURVE DATA # 3
 $\Delta = 1^{\circ}28'59.67''$ RIGHT
 $D = 2^{\circ}51'53.24''$
 $R = 2000.00$
 $T = 25.89$
 $L = 51.77$
 $E = 0.17$

VT RTE. 128 CURVE DATA # 1
 $\Delta = 3^{\circ}35'16.94''$ LEFT
 $D = 7^{\circ}09'43.10''$
 $R = 800.00$
 $T = 25.06$
 $L = 50.10$
 $E = 0.39$

VT RTE. 128 CURVE DATA # 3
 $\Delta = 3^{\circ}46'00.58''$ LEFT
 $D = 7^{\circ}09'43.10''$
 $R = 800.00$
 $T = 26.31$
 $L = 52.59$
 $E = 0.43$

INTERSECTION LAYOUT
 PROJECT NAME: ESSEX
 PROJECT NUMBER: STPG SGNL(17)
 FILE NAME: hb182mul.dgn/hb18211.l
 PROJECT LEADER: B. NYQUIST
 DESIGNED BY: B. MCAVOY
 R.O.W. SHEET 5 OF 5
 PLOT DATE: 28-AUG-2006
 DRAWN BY:
 CHECKED BY:
 SHEET 9 OF 29 SHEETS