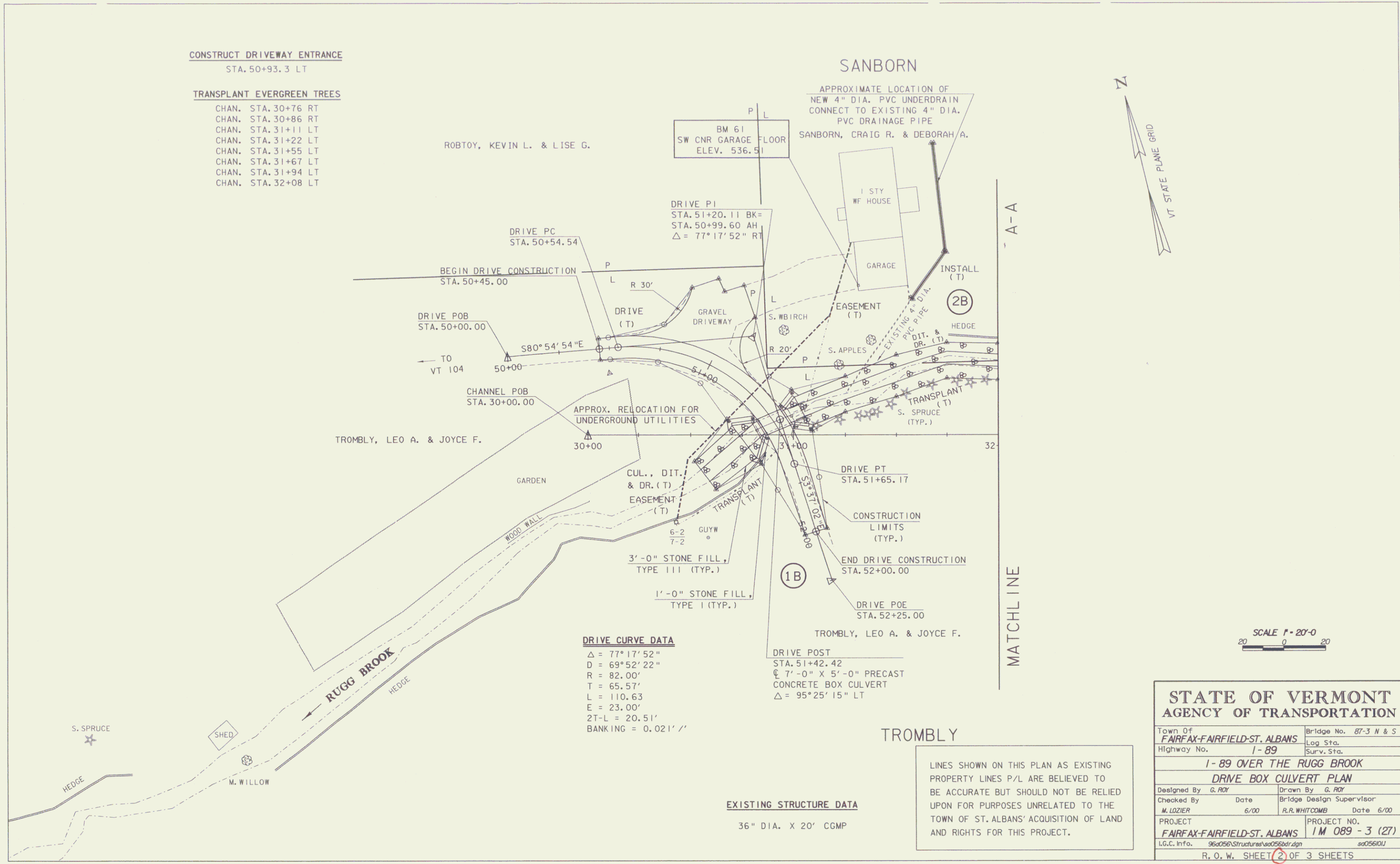


CONSTRUCT DRIVEWAY ENTRANCE
STA. 50+93.3 LT

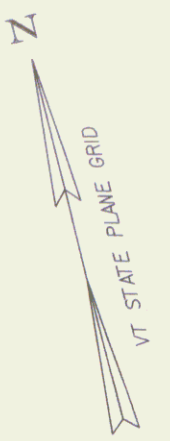
TRANSPLANT EVERGREEN TREES
CHAN. STA. 30+76 RT
CHAN. STA. 30+86 RT
CHAN. STA. 31+11 LT
CHAN. STA. 31+22 LT
CHAN. STA. 31+55 LT
CHAN. STA. 31+67 LT
CHAN. STA. 31+94 LT
CHAN. STA. 32+08 LT



DRIVE CURVE DATA
 $\Delta = 77^\circ 17' 52''$
 $D = 69^\circ 52' 22''$
 $R = 82.00'$
 $T = 65.57'$
 $L = 110.63'$
 $E = 23.00'$
 $2T-L = 20.51'$
 BANKING = 0.02 1' / 1'

EXISTING STRUCTURE DATA
36" DIA. X 20' CGMP

LINES SHOWN ON THIS PLAN AS EXISTING PROPERTY LINES P/L ARE BELIEVED TO BE ACCURATE BUT SHOULD NOT BE RELIED UPON FOR PURPOSES UNRELATED TO THE TOWN OF ST. ALBANS' ACQUISITION OF LAND AND RIGHTS FOR THIS PROJECT.



SCALE 1" = 20'-0"
20 0 20

STATE OF VERMONT AGENCY OF TRANSPORTATION	
Town of FAIRFAX-FAIRFIELD-ST. ALBANS	Bridge No. 87-3 N & S
Highway No. 1-89	Log Sta. Surv. Sta.
1-89 OVER THE RUGG BROOK DRIVE BOX CULVERT PLAN	
Designed By G. ROY	Drawn By G. ROY
Checked By M. LOZIER	Bridge Design Supervisor R.R. WHITCOMB Date 6/00
PROJECT FAIRFAX-FAIRFIELD-ST. ALBANS	PROJECT NO. 1M 089 - 3 (27)
L.G.C. Info. 960056Structures\00256dr.dgn 00256101	
R. O. W. SHEET 2 OF 3 SHEETS	