

3

MORRISON, JOHN W. & MARTHA R.

CURVE DATA NO. 5
 $\Delta = 11^\circ 10' 14''$
 $R = 400.000$
 $T = 39.116$
 $L = 77.985$
 $E = 1.899$
 $2T-L = 0.247$
 BANKING = MATCH EXISTING

CONSTRUCT PAVED APRON
 10+077.9 LT.

RECONSTRUCT T.H. 15 APPROACH
 10+096.5 RT.
 10+104.3 LT.

CONSTRUCT PAVED DRIVE
 10+100.6 LT.
 10+221.7 LT.

BRIDGE RAILING-2 RAIL GALV. BOX BEAM (MOD.)
 10+179.2 LT.-10+187.1 LT.
 10+179.3 RT.-10+189.4 RT.

150mm UNDERDRAIN
 10+095.0 LT.-10+118.8 LT.
 10+199.3 LT.-10+230.0 LT.

150mm UNDERDRAIN CARRIER PIPE
 10+118.8 LT.-10+124.6 LT.
 10+230.0 LT.-10+230.0 RT.
 0.6m VERT. @ 10+095.0 LT.
 0.6m VERT. @ 10+199.3 LT.

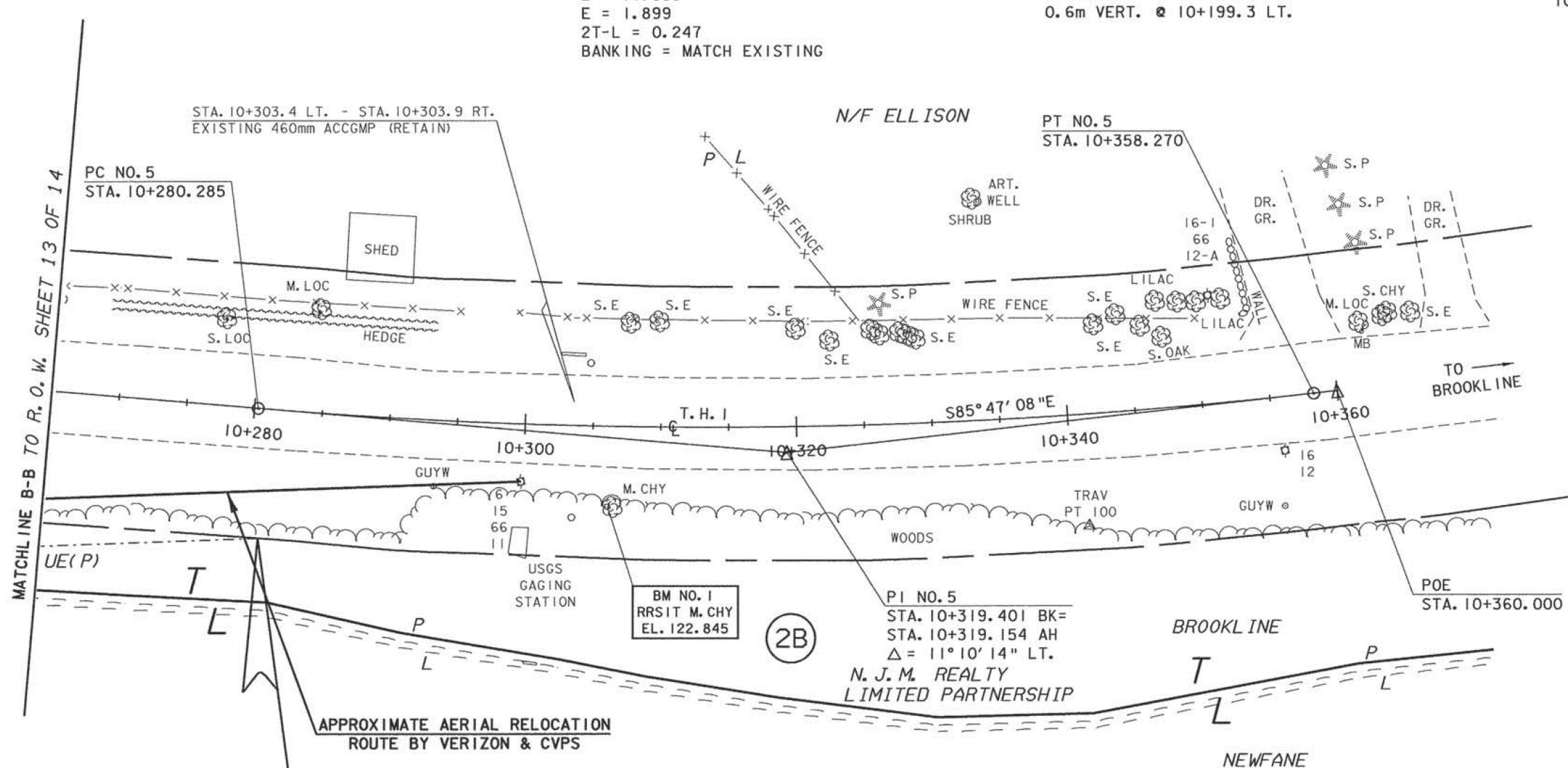
UNDERDRAIN FLUSHING BASIN (FB)
 10+095.0 LT.
 10+199.3 LT.

RELOCATE MAILBOX, SINGLE SUPPORT
 FROM 10+211.6 LT. TO 10+207.8 LT.

HEAVY DUTY STEEL BEAM GUARDRAIL
 10+105.7 RT.-10+130.5 RT.
 10+109.5 LT.-10+130.5 LT.
 10+187.1 LT.-10+211.3 LT.
 10+189.4 RT.-10+213.7 RT.

ANCHOR FOR STEEL BEAM RAIL
 10+107.5 RT.
 10+109.8 LT.
 10+209.8 LT.
 10+211.1 RT.

REMOVAL AND DISPOSAL OF GUARDRAIL
 10+107.3 RT.-10+129.7 RT.
 10+109.0 LT.-10+129.7 LT.
 10+188.0 LT.-10+212.5 LT.
 10+189.7 RT.-10+213.6 RT.

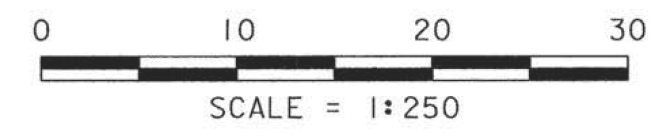


END R.O.W. PROJECT
 BROOKLINE-NEWFANE BHO 1442(25)
 STA. 10+281.030 9.5M (31') RT.

FOR EROSION CONTROL DETAIL
 SEE R.O.W. SHEET 10 OF 14

LINES SHOWN ON THIS PLAN AS EXISTING
 PROPERTY LINES (P/L) ARE BELIEVED TO BE
 ACCURATE BUT SHOULD NOT BE RELIED UPON
 FOR PURPOSES UNRELATED TO THE TOWNS
 OF BROOKLINE'S & NEWFANE'S ACQUISITION
 OF LAND AND RIGHTS FOR THIS PROJECT.

**FOR R.O.W.
 USE ONLY**



LAYOUT SHEET (3)

PROJECT NAME:	BROOKLINE NEWFANE
PROJECT NUMBER:	BHO 1442 (25)
FILE NAME:	95j278\Structures\sj278i03.i
PROJECT MANAGER:	R. WHITCOMB
DESIGNED BY:	G. ROY
R.O.W. SHEET 14 OF 14 SHEETS	PLOT DATE: 03-JUN-2003 DRAWN BY: G. ROY CHECKED BY: M. LOZIER SHEET 9 OF 78