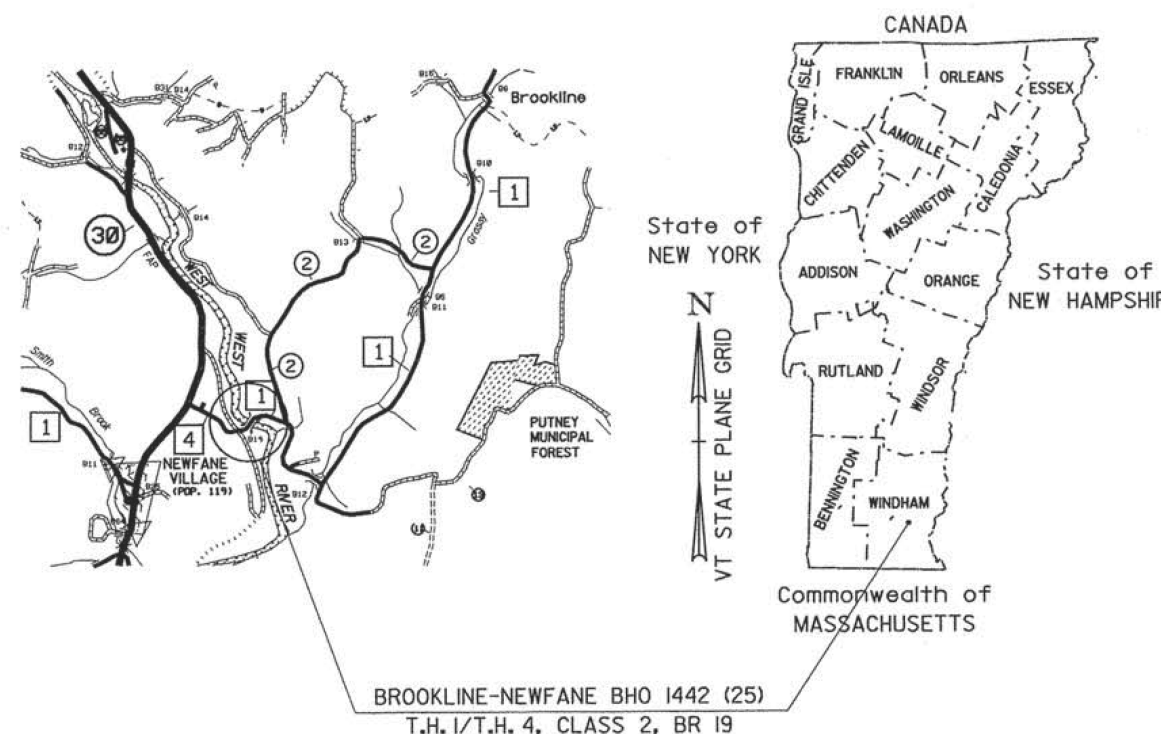


STATE OF VERMONT
AGENCY OF TRANSPORTATION



R.O.W. PLANS

PROPOSED IMPROVEMENT
BRIDGE PROJECT
TOWN OF BROOKLINE - NEWFANE
COUNTY OF WINDHAM



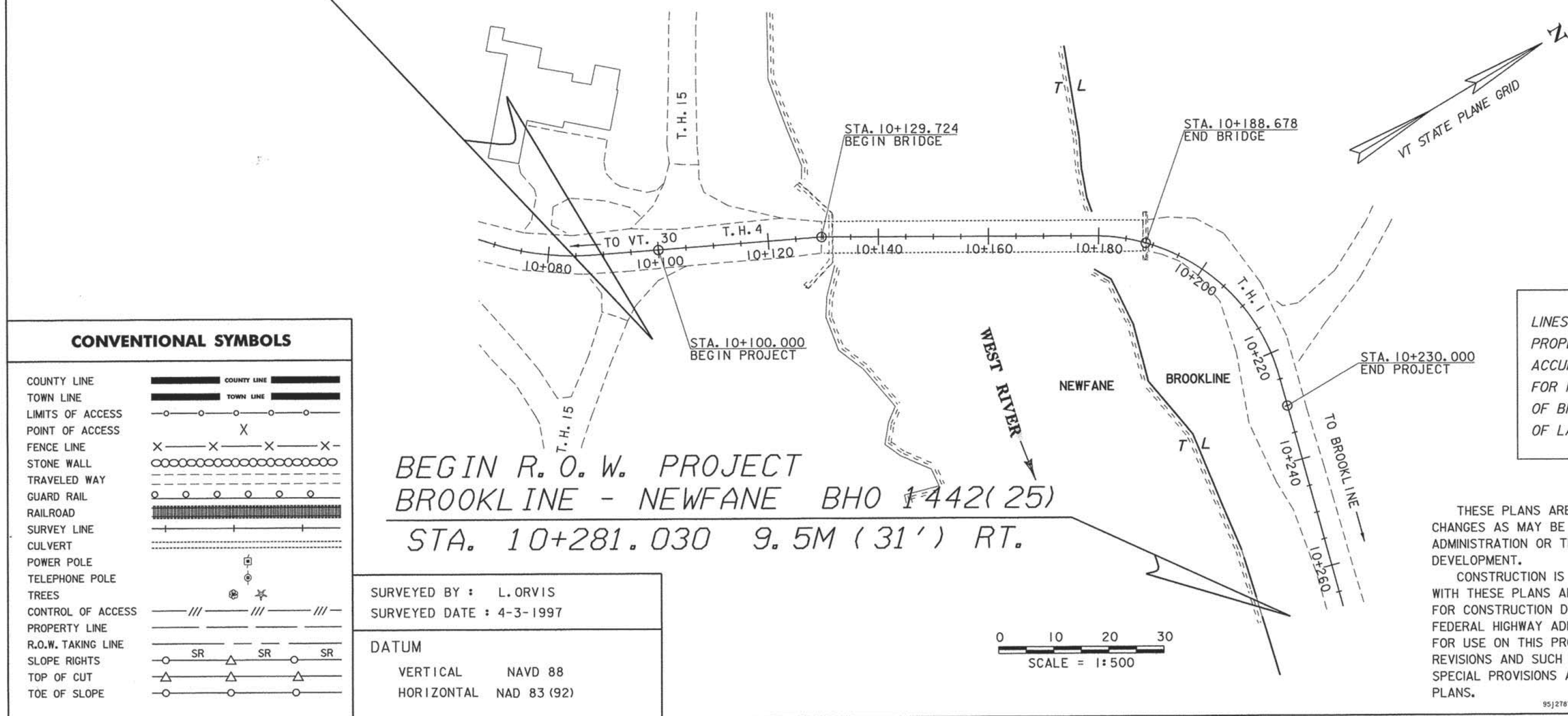
BEGIN R. O. W. PROJECT
BROOKLINE - NEWFANE BHO 1442(25)
STA. 10+097.833 16.2M (53') RT.

ROUTE NO : T.H. 1 / T.H. 4, CLASS 2 BRIDGE NO : 19

PROJECT LOCATION : BEGINNING AT A POINT ON T.H. 4 APPROXIMATELY 0.823 KILOMETERS EASTERLY FROM THE EXISTING INTERSECTION OF T.H. 4 AND VT. 30 AND PROCEED EASTERLY 0.13 KILOMETERS ALONG T.H. 4/T.H. 1.

PROJECT DESCRIPTION : REHABILITATION OF THE EXISTING BRIDGE INCLUDING RELATED APPROACH ROADWAY AND CHANNEL WORK.

LENGTH OF STRUCTURE : 58.954 METERS.
LENGTH OF ROADWAY : 71.046 METERS.
LENGTH OF PROJECT : 130.000 METERS.
LENGTH OF R.O.W. PROJECT : 183.197 METERS. (591.962 FEET)



CONVENTIONAL SYMBOLS

COUNTY LINE	
TOWN LINE	
LIMITS OF ACCESS	
POINT OF ACCESS	
FENCE LINE	
STONE WALL	
TRAVELED WAY	
GUARD RAIL	
RAILROAD	
SURVEY LINE	
CULVERT	
POWER POLE	
TELEPHONE POLE	
TREES	
CONTROL OF ACCESS	
PROPERTY LINE	
R.O.W. TAKING LINE	
SLOPE RIGHTS	
TOP OF CUT	
TOE OF SLOPE	

BEGIN R. O. W. PROJECT
BROOKLINE - NEWFANE BHO 1442(25)
STA. 10+281.030 9.5M (31') RT.

SURVEYED BY : L. ORVIS
SURVEYED DATE : 4-3-1997

DATUM
VERTICAL NAVD 88
HORIZONTAL NAD 83 (92)

LINES SHOWN ON THIS PLAN AS EXISTING PROPERTY LINES (P/L) ARE BELIEVED TO BE ACCURATE BUT SHOULD NOT BE RELIED UPON FOR PURPOSES UNRELATED TO THE TOWNS OF BROOKLINE'S AND NEWFANE'S ACQUISITION OF LAND AND RIGHTS FOR THIS PROJECT.

Metric

UNLESS NOTED OTHERWISE
STATIONS ARE IN KILOMETERS
ELEVATIONS ARE IN METERS
DIMENSIONS ARE IN MILLIMETERS

THESE PLANS ARE SUBJECT TO SUCH ENGINEERING CHANGES AS MAY BE REQUIRED BY THE FEDERAL HIGHWAY ADMINISTRATION OR THE DIRECTOR OF PROJECT DEVELOPMENT.

CONSTRUCTION IS TO BE CARRIED ON IN ACCORDANCE WITH THESE PLANS AND THE STANDARD SPECIFICATIONS FOR CONSTRUCTION DATED 2001, AS APPROVED BY THE FEDERAL HIGHWAY ADMINISTRATION ON JANUARY 4, 2001 FOR USE ON THIS PROJECT, INCLUDING ALL SUBSEQUENT REVISIONS AND SUCH REVISED SPECIFICATIONS AND SPECIAL PROVISIONS AS ARE INCORPORATED IN THESE PLANS.

APPROVED DATE 4/10/02
Director of Project Development

APPROVED DATE 4/9/02
Chief of Right of Way

BROOKLINE - NEWFANE
BHO 1442 (25)
R. O. W. SHEET 1 OF 14 SHEETS