

R.O.W. PLANS



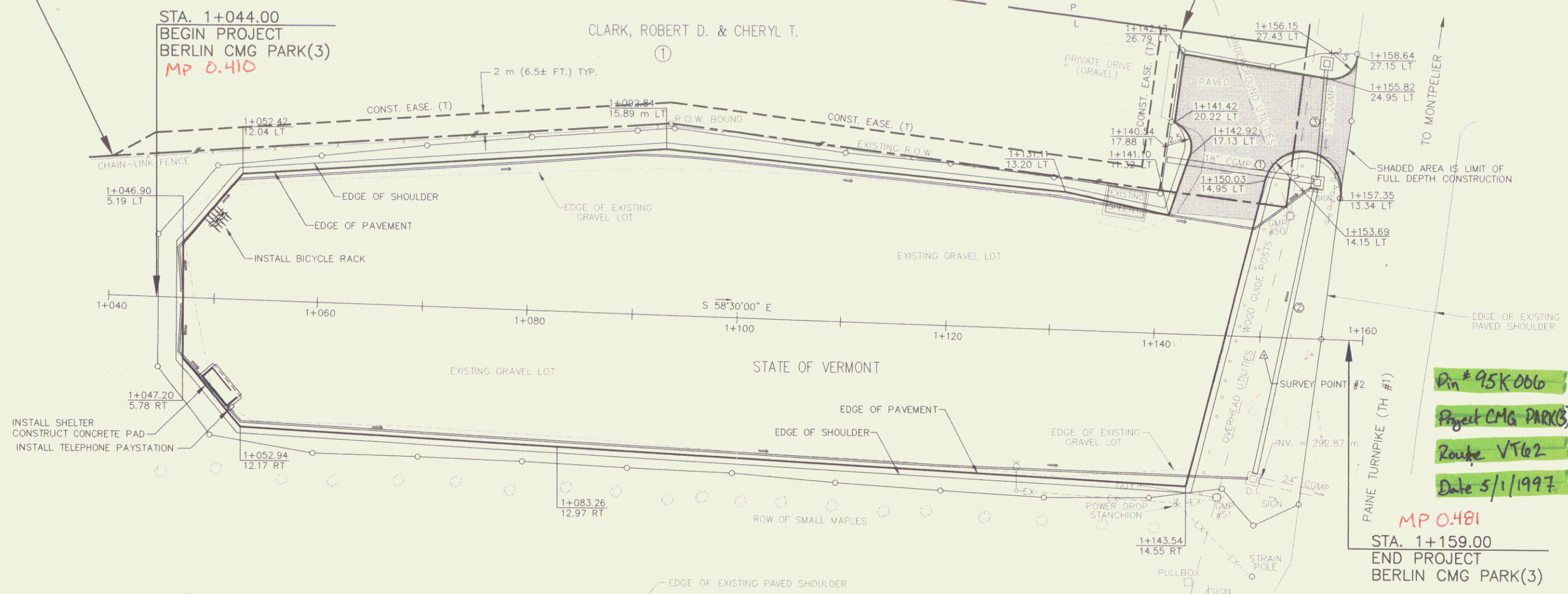
- RELOCATE MAILBOX—MULTIPLE SUPPORT**
STA. 1+157 LT
- YIELDING MARKER POSTS**
STA. 1+046.9 LT
STA. 1+046.9 RT
STA. 1+140.8 LT
STA. 1+149.8 RT
STA. 1+155.1 LT
STA. 1+155.7 LT
- REMOVAL OF EXISTING FENCE**
STA. 1+044 - STA. 1+141 LT
- CHAIN-LINK FENCE, 1.8 m**
STA. 1+044 - STA. 1+141 LT
ERECT FENCE ALONG SAME LINE AS EXISTING FENCE.
- BRACING ASSEMBLY FOR CHAIN-LINK FENCE, 1.8 m**
STA. 1+044 LT
STA. 1+093 LT
STA. 1+141 LT
- DRAINAGE**
① STA. 1+140.8 TO STA. 1+155.1 LT
NEW 525 mm X 375 mm X 14 m PCCSPA(1.7 mm), CSPA(1.7 mm), OR CAAPA(1.6 mm)
REMOVE EXISTING 18" CGMP
- ② STA. 1+149.8 RT TO STA. 1+155.1 LT
NEW 450 mm X 28 mm PCCSPA(1.7 mm), CAAP(1.6 mm), OR CPEP(SL)
WITH A NEW REINFORCED CONCRETE CATCH BASIN (TYPE A GRATE) AT INLET
REMOVE EXISTING DROP INLET AND INSTALL A NEW REINFORCED CONCRETE CATCH BASIN (TYPE A GRATE) AT OUTLET
- ③ STA. 1+155.1 TO STA. 1+155.7 LT
NEW 375 mm X 11 m PCCSPA(1.7 mm), CAAP(1.6 mm), OR CPEP(SL)
WITH A NEW REINFORCED CONCRETE DROP INLET (TYPE A GRATE) AT INLET
REMOVE EXISTING 12" CGMP
- REMOVAL AND DISPOSAL OF GUIDE POSTS**
STA. 1+144.9 RT TO STA. 1+153.6 LT
- DEMOLITION AND DISPOSAL OF BUILDING**
NO. 1, STA. 1+137 LT
- 150 mm UNDERDRAIN**
STA. 1+046.9 TO STA. 1+155.1 LT
STA. 1+046.9 TO STA. 1+149.8 RT
- UNDERDRAIN FLUSHING BASINS**
STA. 1+046.9, 0.7 LT
STA. 1+046.9, 0.7 RT

BEGIN R.O.W. PROJECT
CMG PARK(3) STA. 1+040.0, 13.3 m (43.6') LT.

N/F MCGINNIS

N/F BENOIT

END R.O.W. PROJECT
CMG PARK(3) STA. 1+141.8, 29.0 m (95.2') LT.



LINES SHOWN ON THIS PLAN AS EXISTING PROPERTY LINES (P/L) ARE BELIEVED TO BE ACCURATE BUT SHOULD NOT BE RELIED UPON FOR PURPOSES UNRELATED TO THE STATE OF VERMONT'S ACQUISITION OF LAND AND RIGHTS FOR THIS PROJECT.

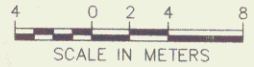
Pin # 95K006
Project CMG PARK(3)
Route VT62
Date 5/1/1997

MP 0.481
STA. 1+159.00
END PROJECT
BERLIN CMG PARK(3)

THIS SHEET TO BE USED FOR R.O.W. INFORMATION ONLY

TABLE OF PROJECT PROPERTY ACQUISITION

PARCEL NO.	GRANTOR	SHEET NO.	BEGINNING STATION	ENDING STATION	TAKING	REM.	RIGHTS	TITLE TAKEN	DATE	TOWN OR CITY RECORDED	BK.	PG.	REMARKS	REVISION NO.	SHEET	DESCRIPTION OF REVISION	DATE	MADE BY	APPROVED BY
1	CLARK, ROBERT D. & CHERYL T.	1	1+040.0 LT.	1+141.8 LT.			CONST. EASE (T) 0.02 ha± (0.06 A±)						225 m ² ± (2425 S.F. ±)			MYLAR TO TRAFFIC	8-19-97		



ALL DIMENSIONS IN METERS UNLESS SHOWN OTHERWISE

Pin # 95K006

BERLIN

DATUM VERTICAL NAVD88 (METERS) HORIZONTAL N/A	DR. (P) - DRAINAGE RIGHT DIT. (P) - DITCHING RIGHT CH. (P) - CHANNEL RIGHT DRIVE (T) - DRIVE RIGHT CUL. (P) - CULVERT RIGHT W - WATER SOURCES	PRESENT R.O.W. TAKING WITHOUT ACCESS TAKING WITHOUT ACCESS ALONG PROPERTY LINE TAKING WITH ACCESS PERMANENT EASEMENT TEMPORARY EASEMENT	LEGEND CZ (P) - CLEAR ZONE CONST. (T) - CONSTRUCTION EASEMENT SR - SLOPE RIGHTS P - PROPERTY LINE L - TOP OF CUT O - TOE OF SLOPE
--	--	--	--

RIGHT-OF-WAY PLAN

APPROVED: [Signature] DATE: 5-1-97

PREPARED BY VSE DATE 3/96
CHECKED BY VSE DATE 3/96
DESIGN SUPERVISOR GAK DATE 3/96
PROJ. BERLIN AND MONTPELIER
CMG PARK(3)
R.O.W. SHEET 1 OF 1 SHEETS
SHEET 1 OF 1 SHEETS