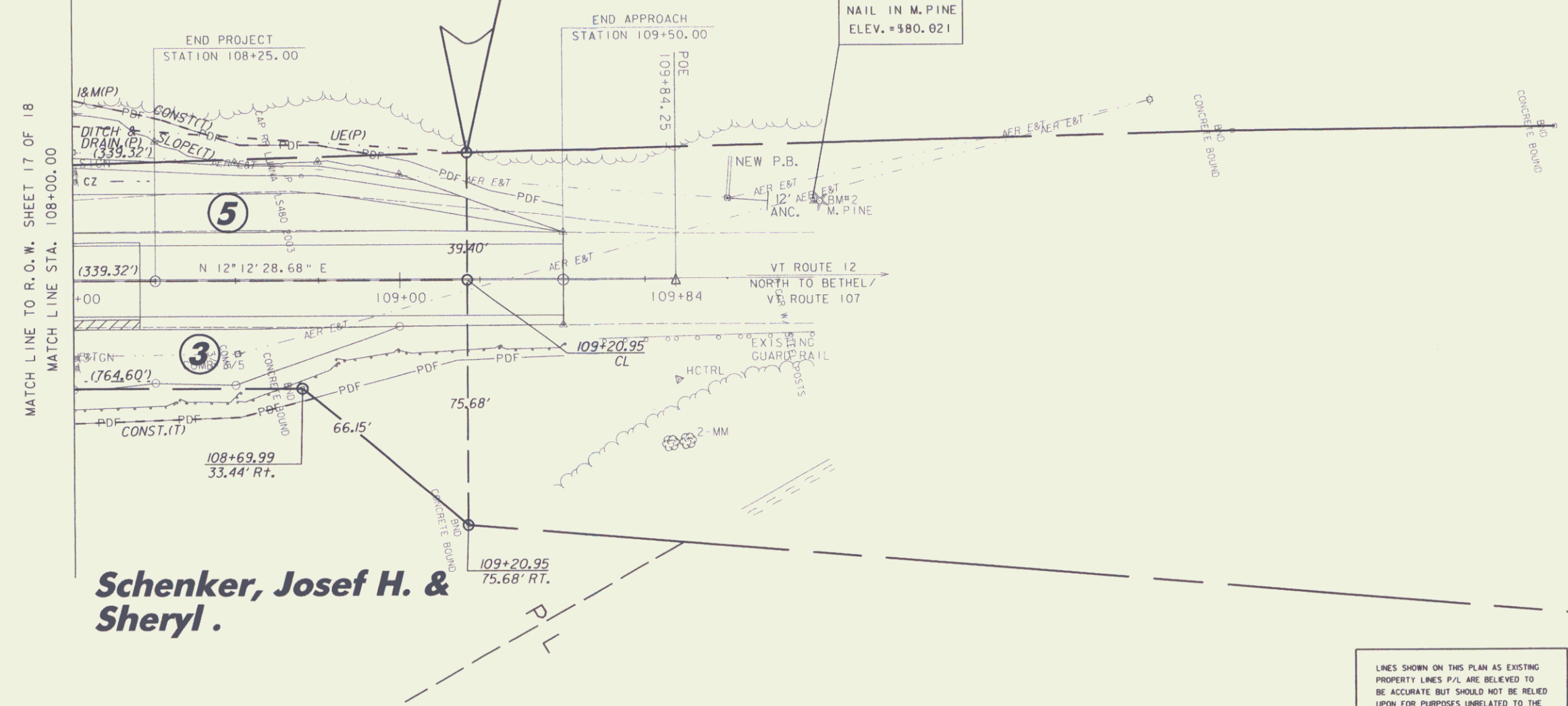




4" WHITE LINE	
FROM STA.	TO STA.
108+00.00 LT	109+50.00 LT
108+00.00 RT	109+50.00 RT
4" YELLOW LINE (DOUBLE)	
FROM STA.	TO STA.
108+00.00	109+50.00

End ROW Project
BHF 0241(30)S
Sta, 109+20.95, 39.40' Lt.

John B. Durfee



B.M. #2
 NAIL IN M.PINE
 ELEV. +580.021

Schenker, Josef H. & Sheryl .

LINES SHOWN ON THIS PLAN AS EXISTING
 PROPERTY LINES P/L ARE BELIEVED TO
 BE ACCURATE BUT SHOULD NOT BE RELIED
 UPON FOR PURPOSES UNRELATED TO THE
 STATE OF VERMONT'S ACQUISITION OF LAND
 AND RIGHTS FOR THIS PROJECT.

LAYOUT SHEET 3

PROJECT NAME:	BETHEL
PROJECT NUMBER:	BHF 0241(30)S
FILE NAME:	95c002\str\sc002bdr.dgn
PROJECT LEADER:	M. EVANS-MONGEON
DESIGNED BY:	U.STANLEY
PLOT DATE:	05-FEB-2010
DRAWN BY:	G.ROKES
CHECKED BY:	U.STANLEY
ROW SHEET	18 OF 18

