

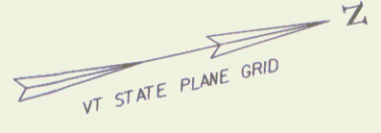
4" WHITE LINE
 FROM STA. TO STA.
 100+10.00 LT - 103+00.00 LT
 100+10.00 RT - 103+00.00 RT

4" YELLOW LINE (DOUBLE)
 FROM STA. TO STA.
 100+10.00 - 103+00.00

COLD PLANING, BITUMINOUS PAVEMENT
 FROM STA. TO STA.
 100+10.00 - 100+60.00

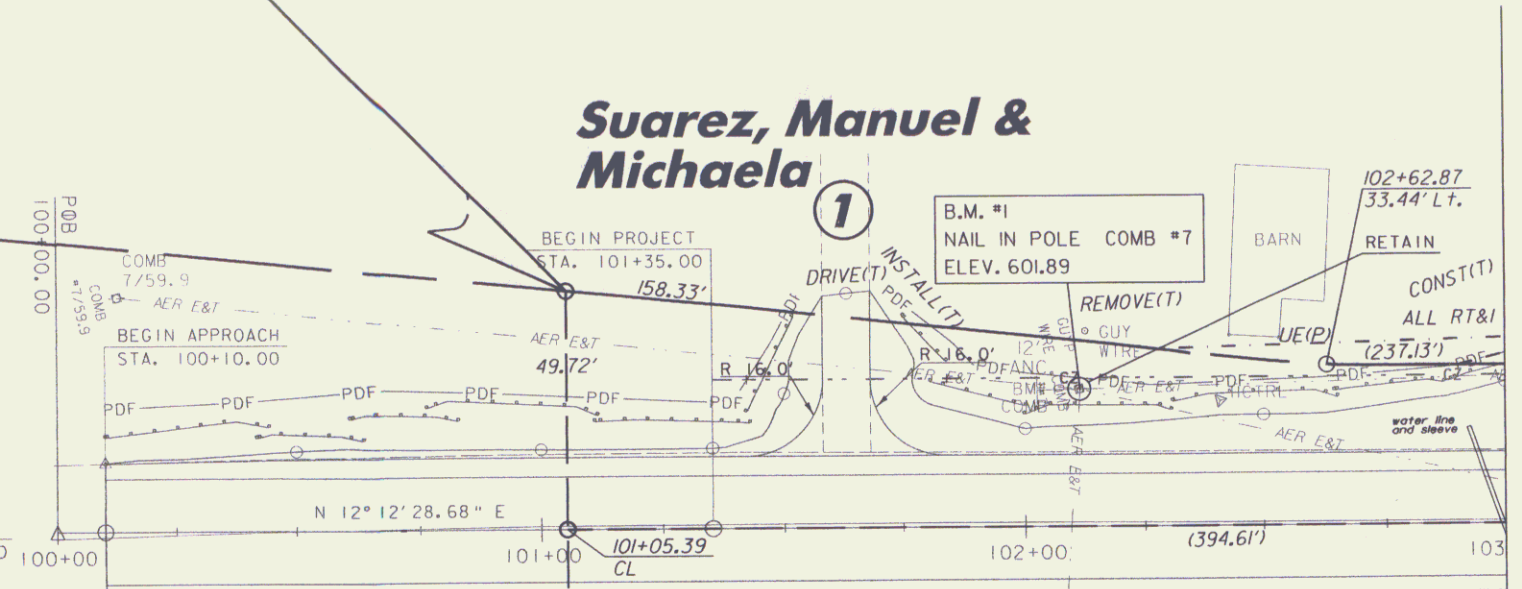
CONSTRUCT DRIVE (GRAVEL)
 FROM STA. TO STA. (WIDTH 10')
 101+63.00 LT

NOTE: THE CONTRACTOR SHALL NOT DISTURB THE FOUR (4) GRANITE POSTS LOCATED AT STA. 101+97 TO STA. 102+48 RT.



Begin ROW Project
BHF 0241(30)S
Sta. 101+05.39, 49.72' Lt.

Suarez, Manuel & Michaela



McKinstry, Mark A. Sr. & Janet K.

McKinstry & Schenker

LINES SHOWN ON THIS PLAN AS EXISTING PROPERTY LINES P/L ARE BELIEVED TO BE ACCURATE BUT SHOULD NOT BE RELIED UPON FOR PURPOSES UNRELATED TO THE STATE OF VERMONT'S ACQUISITION OF LAND AND RIGHTS FOR THIS PROJECT.

SCALE 1" = 20'-0"
 20 0 20

LAYOUT SHEET 1

PROJECT NAME: BETHEL
 PROJECT NUMBER: BHF 0241(30)S
 FILE NAME: 95c002\str\sc002bdr.dgn
 PROJECT LEADER: M.EVANS-MONGEON
 DESIGNED BY: U.STANLEY
 PLOT DATE: 05-FEB-2010
 DRAWN BY: G.ROKES
 CHECKED BY: U.STANLEY
 ROW SHEET 16 OF 18