

GPS CONTROL POINTS

**HVCTRL # 1**

Standard Disk Stamped  
Cleveland Az  
NORTH = 478386.150  
EAST = 1603594.342  
ELEV. = 553.601

TO REACH FROM THE JUNCTION OF VT 107 AND VT 12 SOUTH OF BETHEL, PROCEED EASTERLY ALONG VT 107 AND VT 12 FOR APPROX 0.3 M (1.0 FT) TO THE MARK ON THE LEFT, THE MARK IS DIRECTLY OPPOSITE CLEVELAND BROOK ROAD, 25.5 FT (7.8 M) NORTH FROM THE CENTERLINE OF VT 107 AND VT 12, OWNERSHIP STATE OF VERMONT STATION MARK IS A STATE OF VERMONT SURVEY MARK SET IN THE TOP OF A 12 INCH DIAMETER CONCRETE POST SET FLUSH WITH GROUND, IT IS 25.5 FT (7.8 M) NORTH OF CENTERLINE VT 107 AND VT 12, 4.5 FT (1.4 M) NORTH OF 3 CABLE GUARD RAIL, 45 FT (13.7 M) SOUTHEAST FROM COMBINATION POLE 4/49/57, 15 FT (4.6 M) SOUTH OF THE NORTH END OF A 4 FT (1.2 M) X 5 FT (1.5 M) CONCRETE BOX, 72 FT (21.9 M) NORTH OF THE SOUTH END OF A 4 FT (1.2 M) X 5 FT (1.5 M) CONCRETE BOX.

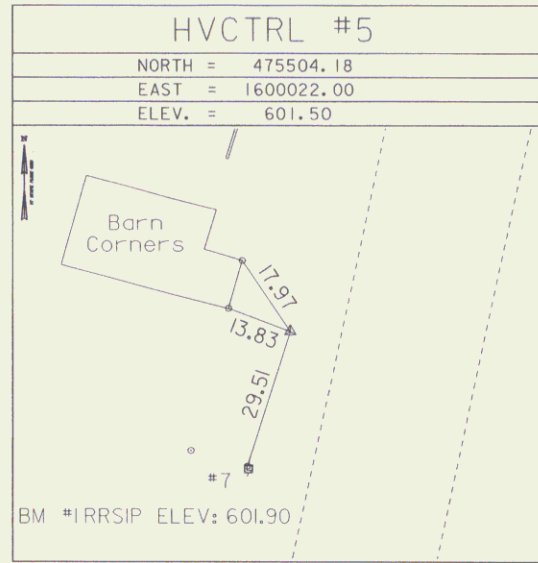
• Description provided by Vermont Agency of Transportation Geodetic Survey Unit

**HVCTRL # 2**

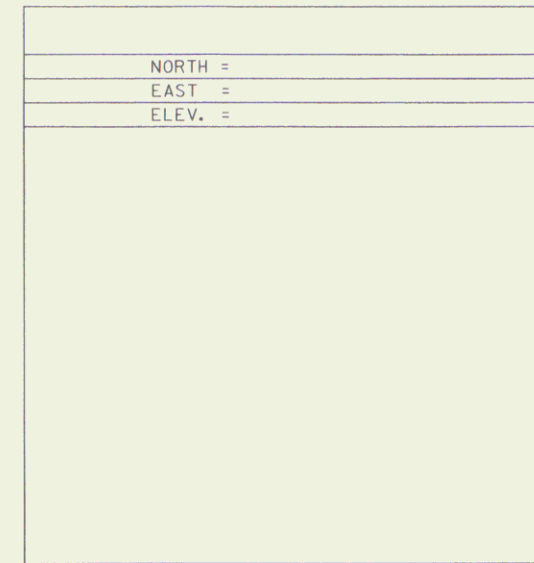
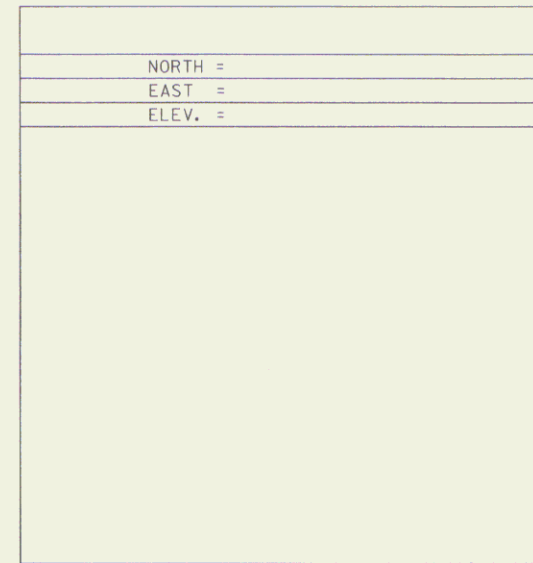
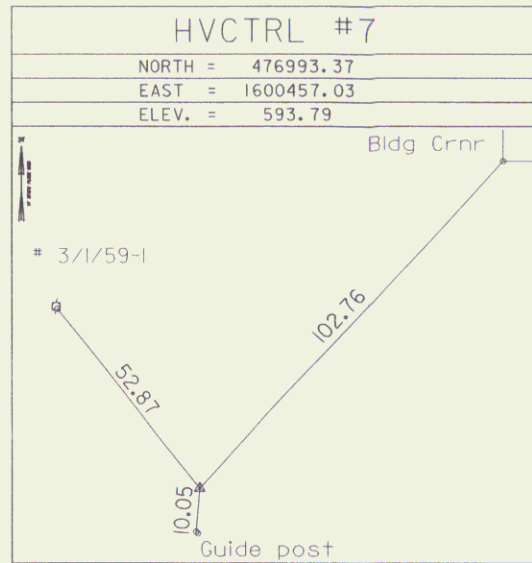
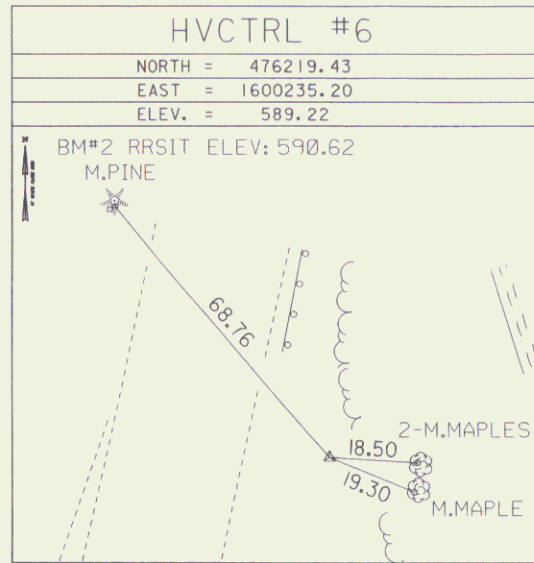
Standard Disk Stamped  
Cleveland  
NORTH = 477609.622  
EAST = 1601931.471  
ELEV. = 580.160

TO REACH FROM THE JUNCTION OF VT ROUTE 107 AND VT ROUTE 12, SOUTH OF BETHEL, PROCEED EASTERLY ALONG VT 107 AND VT 12 FOR APPROX 0.6 M (2.0 FT) TO THE MARK ON THE LEFT. STATION MARK IS A STATE OF VERMONT SURVEY MARK SET IN THE TOP OF A 12 INCH DIAMETER CONCRETE POST SET FLUSH WITH GROUND, IT IS 26 FT (7.9 M) NORTHWEST OF THE CENTERLINE OF THE ROAD, 88.5 FT (27.0 M) SOUTHWEST OF COMBINATION POLE 49/4/41, 143 FT (43.6 M) WEST OF 18 INCH CMP WITH 7 FT (2.1 M) MARBLE HEADWALL.

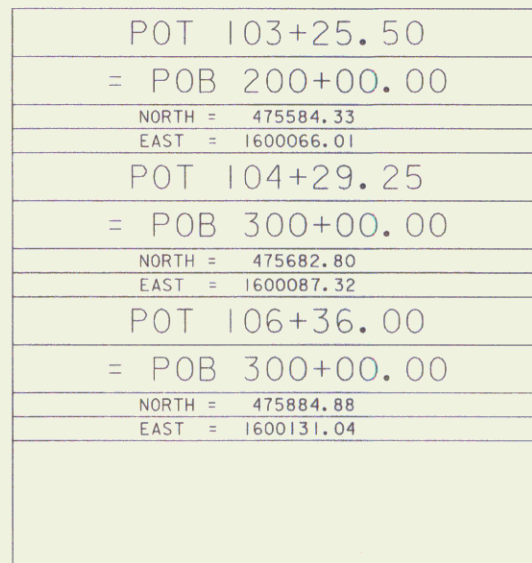
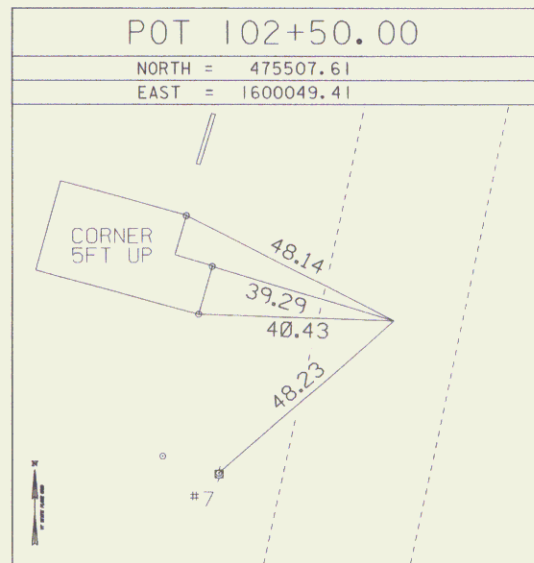
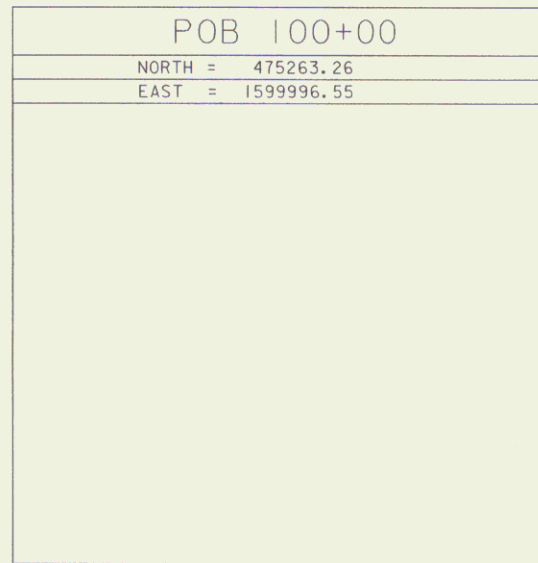
TRAVERSE TIES



• Main Traverse Completed 11/09/95 by R. Gilman P.C. & T. Morse



ALIGNMENT TIES



• Alignment Staked 9/24/08 by R.Gilman P.C. & P.Winters & T.Parker

DATUM	
VERTICAL	NAVD 88
HORIZONTAL	NAD 83 (92)
ADJUSTMENT	Compass

**TIE SHEET**

PROJECT NAME:	BETHEL	PLOT DATE:	03-DEC-2009
PROJECT NUMBER:	BHF 024(30)5	DRAWN BY:	R. BULLOCK
FILE NAME:	95c002\STR2\ s95c002h1.dgn	CHECKED BY:	U. STANLEY
PROJECT LEADER:	M. EVANS-MONGEON	DESIGNED BY:	R. BULLOCK
ROW SHEET 7 OF 18			