

CONSTRUCT DRIVE
2+200.8 LT. - 12.2 M WIDE, PAVED

REMOVAL AND DISPOSAL OF GUARDRAIL
2+241.6 LT. - 2+260.0 LT.

STEEL BEAM GUARDRAIL, GALVANIZED
2+222.6 LT. - 2+260.0 LT.

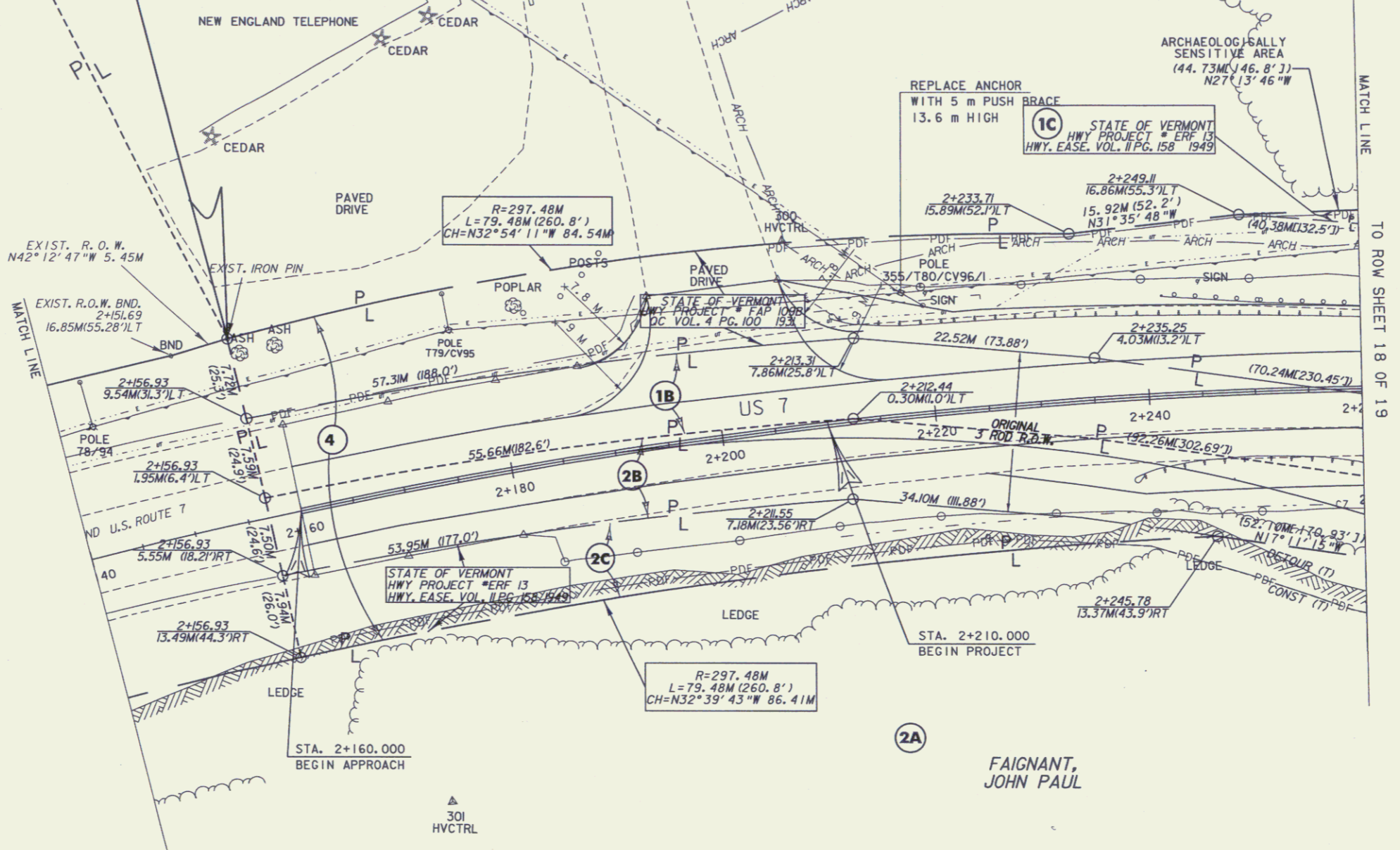
COLD PLANING, BITUMINOUS PAVEMENT
2+160.0 - 2+180.0

MANUFACTURED TERMINAL SECTION, FLARED
2+211.2 LT. - 2+222.6 LT.
2+238.7 RT. - 2+250.1 RT.
2+250.1 RT. - 2+260.0 RT.

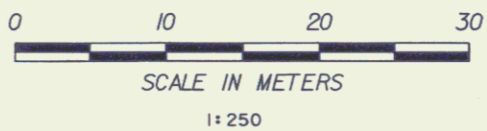
MARGAR, LLC
Joined by
VERIZON NEW ENGLAND, INC.

BEGIN R.O.W. PROJECT
STA 2+156.93
17.26M(56.6')LT

N/F
GOODNICK



LINES SHOWN ON THIS PLAN AS EXISTING PROPERTY LINES P/L ARE BELIEVED TO BE ACCURATE BUT SHOULD NOT BE RELIED UPON FOR PURPOSES UNRELATED TO THE STATE OF VERMONT'S ACQUISITION OF LAND AND RIGHTS FOR THIS PROJECT.



FOR R.O.W. USE ONLY

LAYOUT PLAN I

PROJECT NAME:	RUTLAND TOWN	FILE NAME:	sbi72ip1	PLOT DATE:	31-JAN-2007
PROJECT NUMBER:	BRF 019-3(48)	PROJECT LEADER:	R.WHITCOMB	DRAWN BY:	T.LACKEY
		DESIGNED BY:	T.LACKEY	CHECKED BY:	
		ROW SHEET:	17 OF 19	SHEET:	12 OF 82