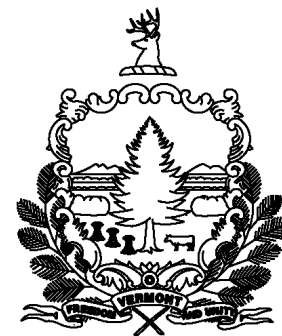


Original Drawing - Ink on polymer meeting the requirements of 27 V.S.A. § 1403

STATE OF VERMONT AGENCY OF TRANSPORTATION



R.O.W. PLANS

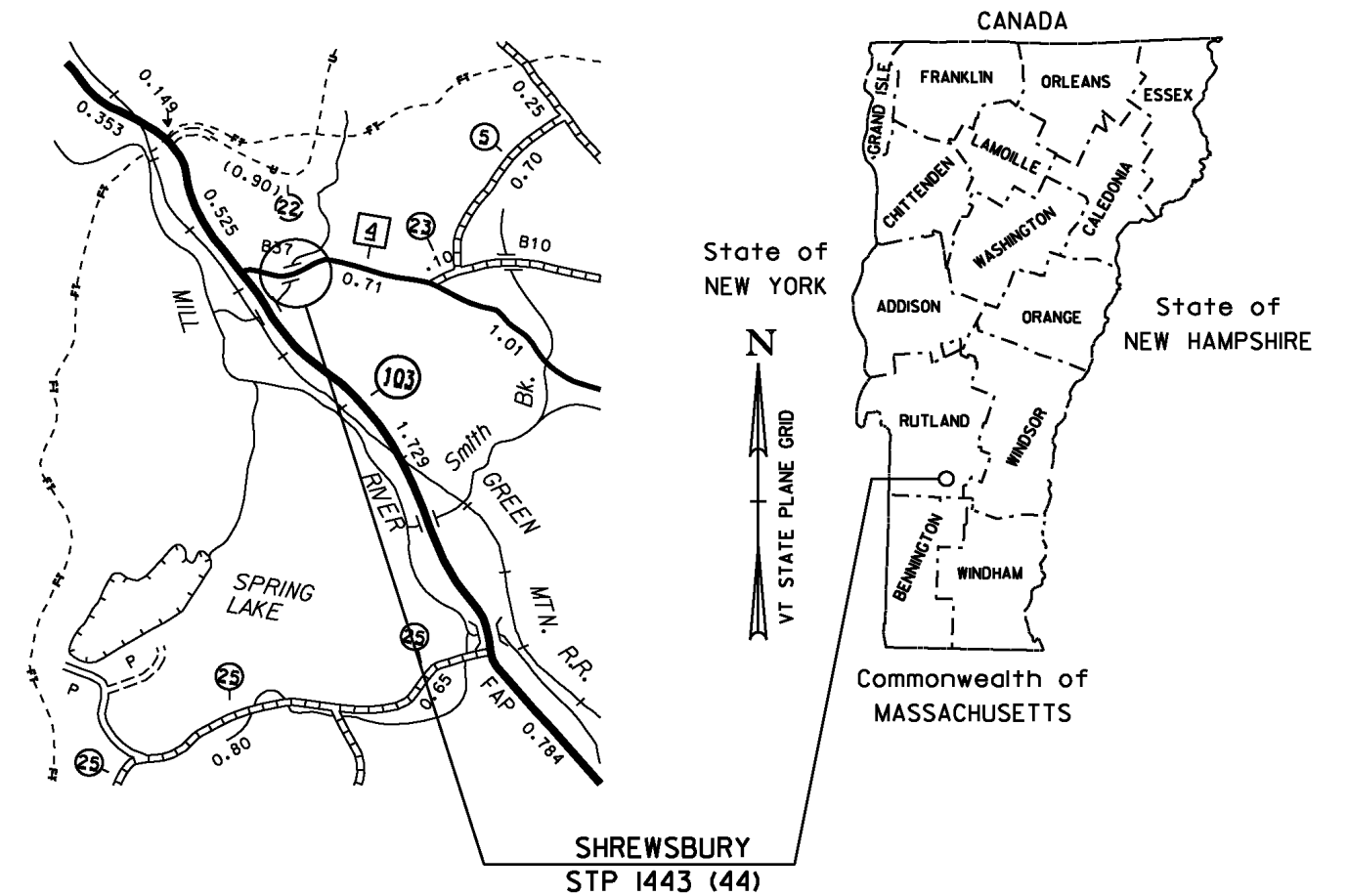
PROPOSED IMPROVEMENT BRIDGE PROJECT TOWN OF SHREWSBURY COUNTY OF RUTLAND

ROUTE NO : TH 4 CLASS 2 LOCAL ROAD BRIDGE NO : 37

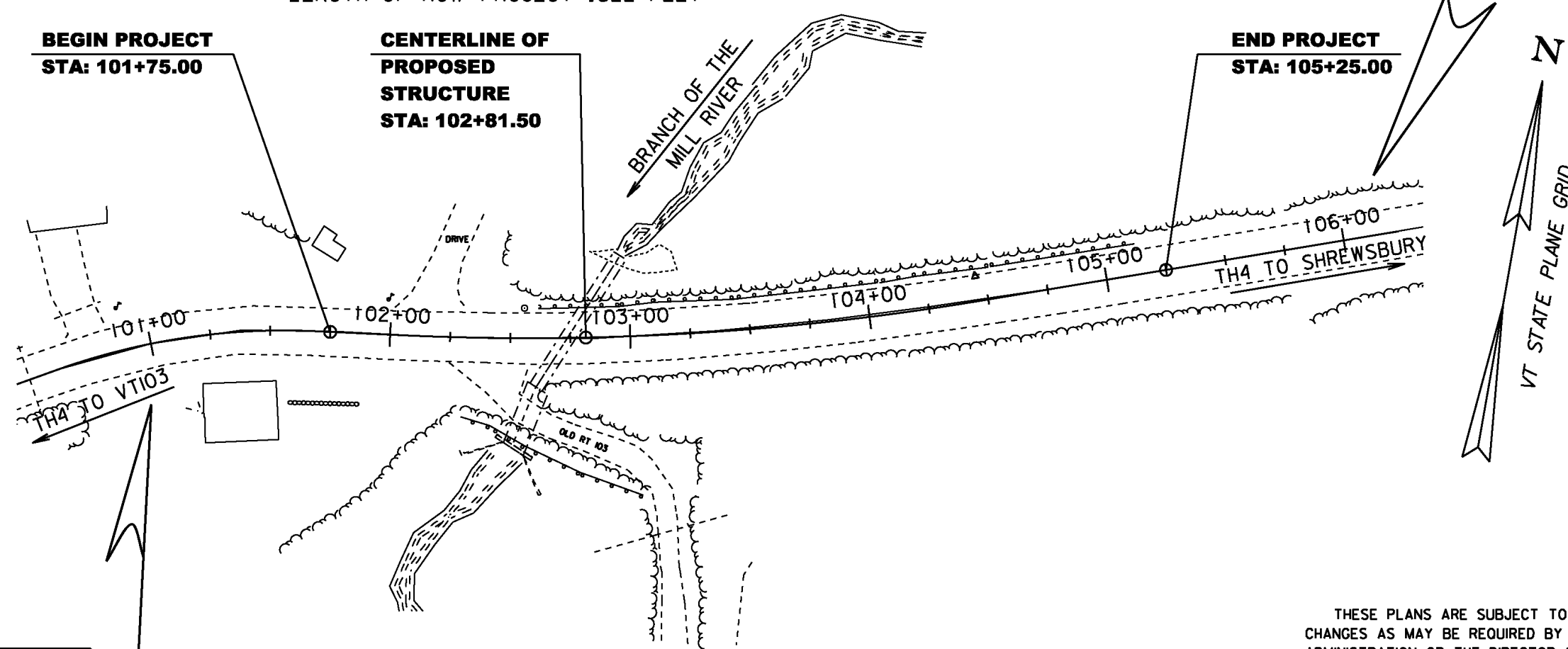
PROJECT LOCATION : TH 4 (LINCOLN HILL ROAD), SHREWSBURY, VERMONT.
APPROXIMATELY 0.15 MILES EASTERLY OF THE INTERSECTION OF TOWN
HIGHWAY 4 AND VERMONT ROUTE 103.

PROJECT DESCRIPTION : WORK TO BE PERFORMED UNDER THIS PROJECT
INCLUDES REPLACEMENT OF EXISTING STRUCTURE (BRIDGE #37) WITH
A NEW STRUCTURE WITH MINIMAL APPROACH ROADWAY AND CHANNEL WORK.

LENGTH OF STRUCTURE : 0 FEET (12 FT WIDE BURIED STRUCTURE)
LENGTH OF ROADWAY : 350 FEET
LENGTH OF PROJECT : 350 FEET
LENGTH OF ROW PROJECT : 522 FEET



**END R.O.W. PROJECT
STP 1443 (44)
STA. 106+16.70
24.75'LT.**



CONVENTIONAL SYMBOLS

COUNTY LINE	
TOWN LINE	
LIMITS OF ACCESS	
POINT OF ACCESS	
FENCE LINE	
STONE WALL	
TRAVELED WAY	
GUARD RAIL	
RAILROAD	
SURVEY LINE	
CULVERT	
POWER POLE	
TELEPHONE POLE	
TREES	
CONTROL OF ACCESS	
PROPERTY LINE	
R.O.W. TAKING LINE	
SLOPE RIGHTS	
TOP OF CUT	
TOE OF SLOPE	

SURVEYED BY : R. D. GILMAN
SURVEYED DATE : NOV. 1995

DATUM
VERTICAL NAVD 88
HORIZONTAL NAD 83 (92)

**BEGIN R.O.W. PROJECT
STP 1443 (44)
STA. 100+94.75
24.75'RT.**

SCALE 1" = 40' - 0"

THESE PLANS ARE SUBJECT TO SUCH ENGINEERING CHANGES AS MAY BE REQUIRED BY THE FEDERAL HIGHWAY ADMINISTRATION OR THE DIRECTOR OF PROGRAM DEVELOPMENT.

CONSTRUCTION IS TO BE CARRIED ON IN ACCORDANCE WITH THESE PLANS AND THE STANDARD SPECIFICATIONS FOR CONSTRUCTION DATED 2011, AS APPROVED BY THE FEDERAL HIGHWAY ADMINISTRATION ON JULY 20, 2011 FOR USE ON THIS PROJECT, INCLUDING ALL SUBSEQUENT REVISIONS AND SUCH REVISED SPECIFICATIONS AND SPECIAL PROVISIONS AS ARE INCORPORATED IN THESE PLANS.

94J154

APPROVED Robert M. White DATE 5/2/13
Chief of Right of Way

SHREWSBURY
STP 1443 (44)
ROW SHEET 1 OF 11 SHEETS

Original Drawing - Ink on polymer meeting the requirements of 27 V.S.A. § 1403

STATE OF VERMONT
AGENCY OF TRANSPORTATION

RIGHT - OF - WAY DETAIL SHEET

TABLE OF PROPERTY ACQUISITION

PARCEL NO.	PROPERTY OWNER	SHEET NO.	BEGINNING STATION	ENDING STATION	TAKE	REMAINDER	RIGHT			RECORDING DATA				REMARKS				
							AREA±	AREA±	TYPE	(T)/(P)	AREA ±	TITLE	DATE		TOWN / CITY	BOOK	PAGE	
1A	FILLMORE, TODD M. & DEIRDRE	1	TH 4 100+95 RT	TH 4 102+11 RT			INSTALL	(T)		WDOE	04/11/14	SHREWSBURY	65	37	TEMPORARY WATER LINE			
			TH 4 101+34 RT	TH 4 102+22 RT			R & R	(T)								WATER LINE		
			TH 4 101+52 RT	TH 4 102+05 RT			CONST.	(T)	2,133 SF								INCL. BF & EC	
			TH 4 101+58 RT	TH 4 102+22 RT			SR	(T)	226 SF									
			TH 4 101+99 RT	TH 4 102+ 22 RT			CH	(P)	703								INCL. STONE FILL	
			TH 4 102+12 RT	TH 4 102+21 RT			CUL	(P)										
1B		1	TH 4 102+11 RT	TH 4 103+64 RT			INSTALL	(T)							TEMPORARY WATER LINE			
			TH 4 102+18 RT	TH 4 102+61 RT			CH	(P)	1,417 SF							INCL. STONE FILL		
			TH 4 102+21 RT	TH 4 102+25 RT			CUL & DR	(P)										
			TH 4 102+22 RT	TH 4 106+15 RT			CONST	(T)	0.35 A								INCL. BF, PDF & EC; 8,118 S.F.±	
			TH 4 102+22 RT	TH 4 104+77 RT			R & R	(T)									WATER LINE	
			TH 4 102+25 RT	TH 4 102+77 RT			I & M	(P)	980 SF								FOOTINGS, CULVERTS & WINGWALLS	
																		INCL. EC
			TH 4 102+22 RT	TH 4 102+28 RT			SR	(T)	14 SF									
			TH 4 102+42 RT	TH 4 103+17 RT			REMOVE	(T)										PAVEMENT & GUARD RAIL
			TH 4 102+57 RT	TH 4 103+08 RT			SR	(P)	2,396 SF									INCL. EC
			TH 4 102+98 RT	TH 4 103+05 RT			INSTALL	(T)										GUARD RAIL
TH 4 103+11 RT				DRIVE	(T)										OLD RTE. 103			
TH 4 103+17 RT	TH 4 104+65 RT			SR	(T)	1,842 SF												
TH 4 105+40 RT	TH 4 105+46 RT			I & M	(P)										GUY WIRE & ANCHOR			
1C		1	TH 4 101+10 LT	TH 4 102+01 LT			CONST	(T)	546 SF							INCLUDES PDF		
			TH 4 101+74 LT	TH 4 102+00 LT			SR	(P)	114 SF									
			TH 4 101+79 LT	TH 4 101+99 LT			REMOVE	(T)									FENCE	
2	FORREST, JOSEPH E. & MARY L.	1	TH 4 102+29 LT	TH 4 102+80 LT			UE	(P)	0.04A	WDOE	04/01/14	SHREWSBURY	65	42	1,715 SF±			
			TH 4 102+40 LT				I & M	(P)								GUY WIRE & ANCHOR		
3	KELLEY, CHARLES H. & KATHLEEN C., TRUSTEES FOR THE CHARLES H. KELLEY REVOCABLE LIVING TRUST	1	TH 4 101+99 LT	TH 4 102+18 LT			SR	(P)	173 SF	WDOE	04/28/14	SHREWSBURY	65	75-77				
			TH 4 101+99 LT	TH 4 102+06 LT			REMOVE	(T)								FENCE		
			TH 4 102+00 LT	TH 4 103+48 LT			CONST	(T)	1,472 SF								INCL. BF & EC	
			TH 4 102+13 LT				DRIVE	(T)									12' GRAVEL WITH 5' PAVED APRON	
			TH 4 102+29 LT	TH 4 103+32 LT			UE	(P)	0.12A								5,317 SF±	
			TH 4 102+30 LT	TH 4 103+04 LT			SR	(P)	1,392 SF								INCL. EC	
			TH 4 102+45 LT	TH 4 102+67 LT			I & M	(P)									GUY WIRE & ANCHOR	
			TH 4 102+86 LT	TH 4 103+15 LT			I & M	(P)	326 SF								FOOTINGS, CULVERT & WING WALLS	
TH 4 102+98 LT	TH 4 103+42 LT			CH	(P)	707 SF								INCL. STONE FILL				
4	CHESSER, JARED B. & TIFANY L.	1	TH 4 102+ 99 LT	TH 4 103+44 LT			I & M	(P)	369 SF	WDOE	09/18/13	SHREWSBURY	64	398	FOOTINGS, CULVERT & WING WALLS			
			TH 4 103+10 LT	TH 4 103+57 LT			CH	(P)	742 SF							INCL. STONE FILL		
			TH 4 103+50 LT	TH 4 103+92 LT			SR	(P)	637 SF								INCL. EC	
			TH 4 103+41 LT	TH 4 106+16.70 LT			CONST	(T)	0.10A								INCL. BF, PDF & EC; 4,484 SF±	
5	TOWN OF SHREWSBURY		TH 4 100+94.75 RT	TH 4 106+16.70 LT											TOWN EASEMENT			
6	GREEN MOUNTAIN POWER CORPORATION		TH 4 100+94.75 RT	TH 4 106+16.70 LT											UTILITY EASEMENT			
7	VERMONT TRANSCO, LLC		TH 4 100+94.75 RT	TH 4 106+16.70 LT											UTILITY EASEMENT			
8	TELEPHONE OPERATING COMPANY OF VERMONT, LLC		TH 4 100+94.75 RT	TH 4 106+16.70 LT											UTILITY EASEMENT			
9	COMCAST OF CONNECTICUT/GEORGIA/ MASSACHUSETTS/NEW HAMPSHIRE/ NEW YORK/NORTH CAROLINA/VERMONT, LLC		TH 4 100+94.75 RT	TH 4 106+16.70 LT											UTILITY EASEMENT			

TABLE OF REVISIONS

REVISION NO.	SHEET NO.	DESCRIPTION	DATE
1	3	PARCEL NO. 2 FORREST. CHANGE ENDING STATION OF UTILITY EASEMENT FROM TH 4 103+30 LT TO TH 4 102+80 LT. CHANGE THE AREA OF THIS RIGHT TO 0.04A±, 1,715 SF± PER C.O. 9815	06/26/13
		APPROVED BY: HP	MADE BY: MR
2	3,4	PARCEL NO. 1A FILLMORE. CHANGE ENDING STA. OF SR(T) FROM 102+14 RT TO 102+22 RT. 226 SF±. ADD CUL (P) FROM 102+12 RT ~ 102+24 RT. PARCEL 1B ADD SR (T) TH 4 102+22 RT ~ TH 4 102+28 RT 14 SF±. ADD CUL & DR (P) 102+21 RT ~ 102+25 RT PER C.O. 9844	11/04/13
		APPROVED BY: RC	MADE BY: MR

PLAN LEGEND

	EXISTING RIGHT-OF-WAY		TOE OF SLOPE
	TAKING WITH ACCESS		TOP OF CUT
	TAKING WITHOUT ACCESS		SLOPE RIGHT
	CLEAR ZONE		CONSTRUCTION RIGHT
	PROPERTY LINE		PROJECT DEMARCATION FENCE

EC	-EROSION CONTROL
(P)	-PERMANENT
(T)	-TEMPORARY
DR.	-DRAINAGE RIGHT
DIT.	-DITCHING RIGHT
CH.	-CHANNEL RIGHT
DRIVE	-DRIVE RIGHT
CUL.	-CULVERT RIGHT
C&T	-CLEARING & TRIMMING RIGHT
SR	-SLOPE RIGHT
UE	-UTILITY EASEMENT

R & R - REMOVE & RESET
I & M - INSTALL & MAINTAIN

APPROVED: HARRY PETROVS DATE: 5-2-13
CHIEF, PLANS & TITLES

PLOT DATE 04/20/17

PROJECT NAME: **SHREWSBURY**
PROJECT NUMBER: **STP 1443 (44)**

FILE NAME: r94j154detail.xls	PLOT DATE:
PROJECT LEADER: J. LACROIX	DRAWN BY: MR
DESIGNED BY: U. STANLEY	CHECKED BY: BF
R.O.W. DETAIL SHEET #1	ROW SHEET 3 OF 11

Original Drawing - Ink on polymer meeting the requirements of 27 V.S.A. § 1403

EXISTING STRUCTURE:
6' DIAMETER x 65' LONG CMP WITH
10' x 10' x 26' CONCRETE ARCH AT OUTFALL
OVERALL LENGTH: 91'
ROADWAY WIDTH: 21.4' OVER CMP

**FORREST, JOSEPH E.
& MARY L.**

**KELLEY, CHARLES H.
& KATHLEEN C.,
TRUSTEES FOR THE
CHARLES H. KELLEY
REVOCABLE LIVING TRUST**

CHESSER, JARED B. & TIFANY L.

FILLMORE, TODD M. & DEIRDRE

BEGIN APPROACH
STA 100+85.00

BEGIN PROJECT
STA 101+75.00

CENTERLINE STRUCTURE
ML STA 102+81.50 =
CHANNEL STA 201+25.00

MAIN LINE POST STA 102+79.71
= CHANNE LINE STA 201+21.92
= DELTA ANGLE = 121.7327°

BENCH MARK
BM#1 RRSIP
EL = 1019.726'

CURVE (1)
DELTA = 22°25'00"
D = 20°30'00"
R = 279.49'
T = 55.38'
L = 109.35'
E = 5.43'

PT
STA 101+68.68

PI CURVE (1)

STA 101+14.71 BK

STA 101+13.30 AH

STA 101+13.30 AH

STA 101+13.30 AH

STA 101+13.30 AH

STA 101+13.30 AH

STA 101+13.30 AH

STA 101+13.30 AH

STA 101+13.30 AH

STA 101+13.30 AH

STA 101+13.30 AH

STA 101+13.30 AH

STA 101+13.30 AH

STA 101+13.30 AH

STA 101+13.30 AH

STA 101+13.30 AH

STA 101+13.30 AH

STA 101+13.30 AH

STA 101+13.30 AH

STA 101+13.30 AH

STA 101+13.30 AH

STA 101+13.30 AH

STA 101+13.30 AH

STA 101+13.30 AH

STA 101+13.30 AH

STA 101+13.30 AH

STA 101+13.30 AH

STA 101+13.30 AH

STA 101+13.30 AH

STA 101+13.30 AH

STA 101+13.30 AH

STA 101+13.30 AH

STA 101+13.30 AH

STA 101+13.30 AH

STA 101+13.30 AH

STA 101+13.30 AH

STA 101+13.30 AH

STA 101+13.30 AH

STA 101+13.30 AH

STA 101+13.30 AH

STA 101+13.30 AH

STA 101+13.30 AH

STA 101+13.30 AH

STA 101+13.30 AH

STA 101+13.30 AH

STA 101+13.30 AH

STA 101+13.30 AH

STA 101+13.30 AH

STA 101+13.30 AH

STA 101+13.30 AH

STA 101+13.30 AH

STA 101+13.30 AH

STA 101+13.30 AH

STA 101+13.30 AH

STA 101+13.30 AH

STA 101+13.30 AH

**BEGIN R.O.W. PROJECT
STP 1443 (44)
STA. 100+94.75
24.75'RT.**

**FOR R.O.W.
USE ONLY**

LAYOUT PLAN

SCALE: 1" = 20'-0"
20 0 20

HEAVY DUTY STEEL BEAM GUARDRAIL, GALVANIZED
ML STA 102+31.23 LT - ML STA 105+27.00 LT
ML STA 102+04.00 RT - SL STA 300+68.00 LT

ANCHORS FOR STEEL BEAM RAIL

ML STA 102+45.00 LT
ML STA 105+14.00 LT
ML STA 102+04.00 RT
SL STA 300+54.96 RT

**END R.O.W. PROJECT
STP 1443 (44)
STA. 106+16.70
24.75'LT.**

LINE SHOWN ON THIS PLAN AS EXISTING
PROPERTY LINES P/L ARE BELIEVED TO
BE ACCURATE BUT SHOULD NOT BE RELIED
UPON FOR PURPOSES UNRELATED TO THE
TOWN OF SHREWSBURY'S ACQUISITION OF LAND
AND RIGHTS FOR THIS PROJECT.

REMOVE WATER LINE
ML STA 101+85.00 RT - STA 103+67 RT

CONSTRUCT WATER LINE
ML STA 101+65 RT - STA 103+67 RT

REMOVAL AND DISPOSAL OF GUARDRAIL
ML STA 102+62.00 - STA 105+15.00 LT
ML STA 102+30.00 - STA 103+03.00 RT

4" YELLOW LINE
ML STA 100+85.00 - STA 106+15.00 LT/RT

RELOCATE MAILBOX, SINGLE SUPPORT
ML STA 102+00.00 LT

18" OPTION DRAINAGE PIPE
ML STA 101+75.00 LT - STA 102+25.00 RT

PRECAST REINFORCED CONCRETE DROP INLET
WITH CAST IRON GRATE
ML STA 101+75.00 LT

PROJECT NAME: SHREWSBURY
PROJECT NUMBER: STP 1443 (44)

FILE NAME: s94j54bdr.dgn
PROJECT LEADER: C. CARLSON
DESIGNED BY: N. VANDENBERG
ROW LAYOUT SHEET 1

PLOT DATE: 11-MAY-2017
DRAWN BY: M. LONGSTREET
CHECKED BY: J. LACROIX
ROW SHEET 4 OF 11

Original Drawing - Ink on polymer meeting the requirements of 27 V.S.A. § 1403

GPS CONTROL POINTS

HCTRL #1

69529 AZ MK
 NORTH = 373076.859
 EAST = 1526511.983

GENERAL LOCATION, 7 MI (11.3 KM) SOUTHEAST OF RUTLAND AND 14 MI (22.5 KM) NORTHWEST OF LUDLOW. TO REACH, FROM THE JUNCTION OF US ROUTE 7 AND VT ROUTE 103 IN CLARENDON PROCEED SOUTHEAST ON ROUTE 103 FOR 2.05 MI (3.30 KM) TO THE MARK ON THE LEFT (NORTHEAST). 527 FT (160.6 M) NORTHWEST OF MILEPOST 45/92 ON THE GREEN MOUNTAIN RAILROAD, 98 FT (29.9 M) NORTHEAST OF UTILITY POLE 268X/4, 66 FT (20.1 M) NORTHEAST OF AND 10 FT (3.0 M) HIGHER THAN THE CENTERLINE OF ROUTE 103, 23.5 FT (7.2 M) SOUTHWEST OF THE SOUTHWEST RAIL AND 4 FT (1.2 M) NORTHEAST OF A FIBERGLASS WITNESS POST. OWNERSHIP, GREEN MOUNTAIN RAILROAD (802) 463-4756, CALL BEFORE AND AFTER ANY OCCUPATIONS.

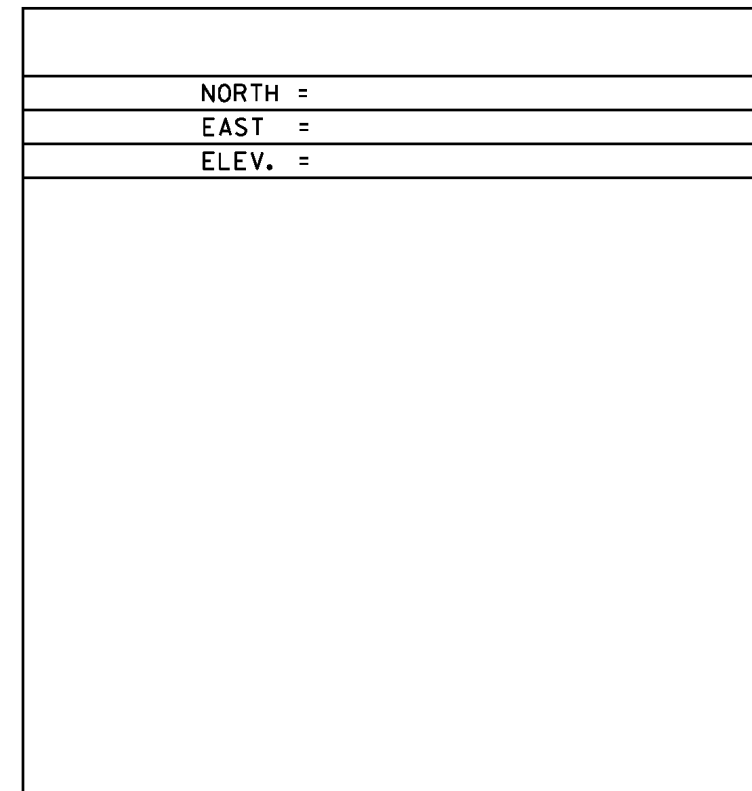
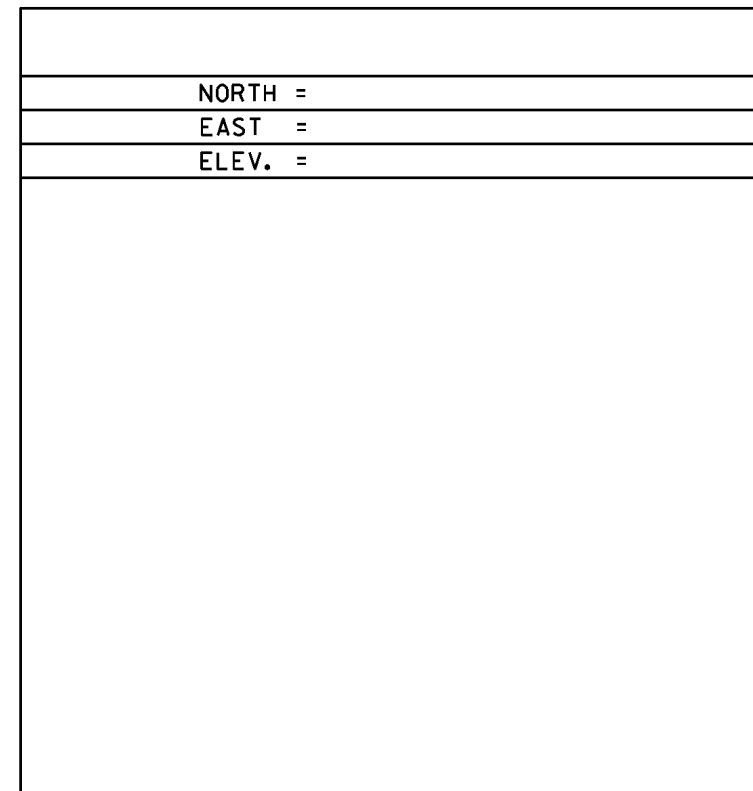
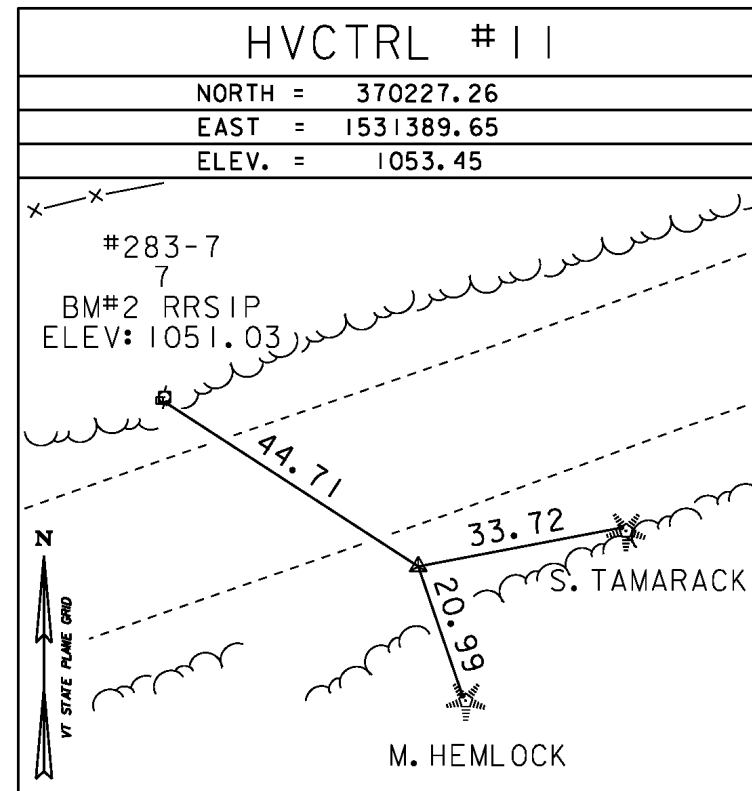
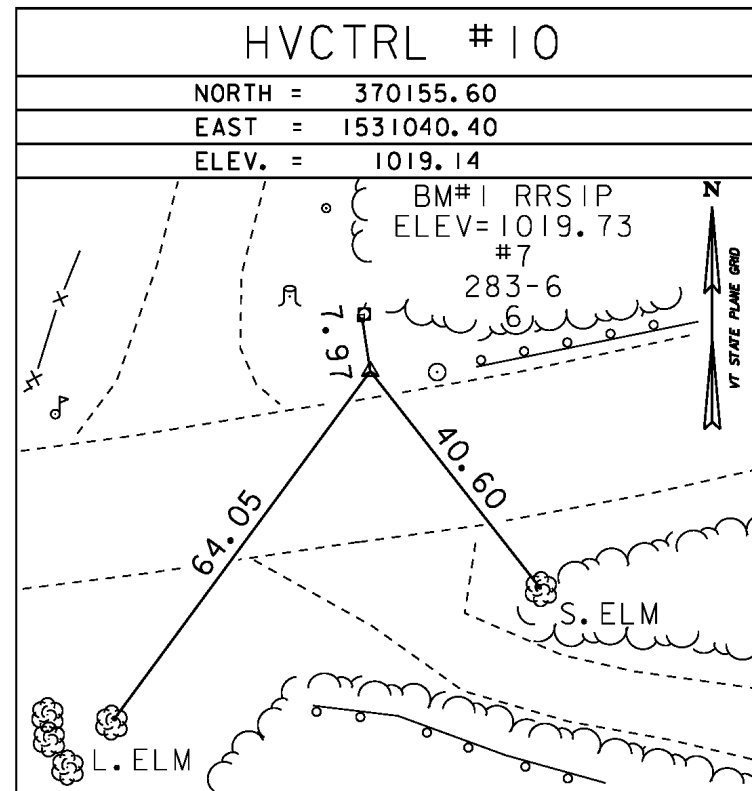
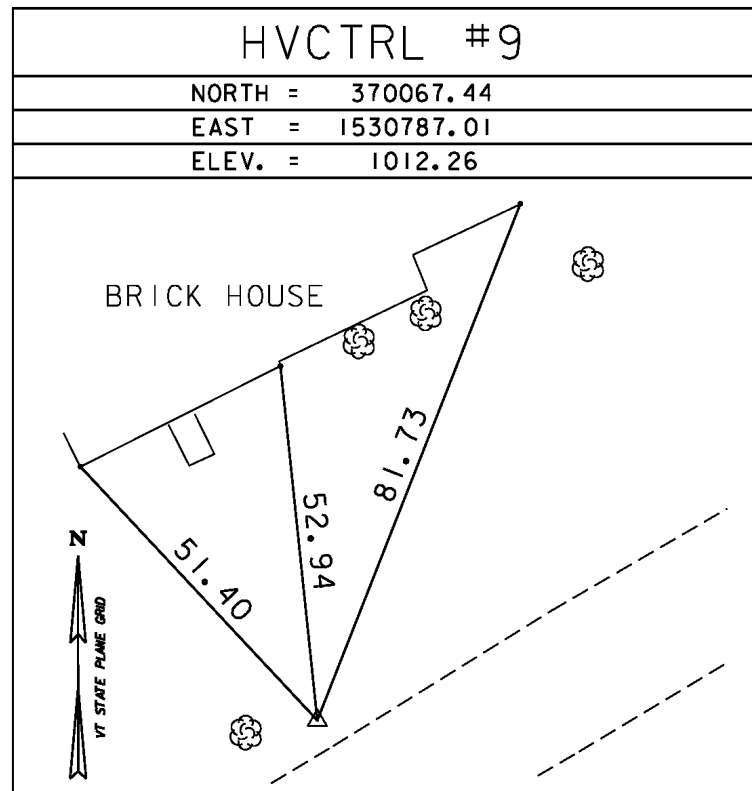
HVCTRL #2

69529
 NORTH = 372469.642
 EAST = 1527699.596
 ELEV. = 868.476

THE STATION IS LOCATED ABOUT 9.66 KM (6.00 MI) SOUTH OF RUTLAND, 4.83 KM (3.00 MI) NORTHWEST OF CUTTINGVILLE, 4.83 KM (3.00 MI) WEST OF SHREWSBURY. OWNERSHIP--STATE OF VERMONT. TO REACH FROM THE INTERSECTION OF ROUTE 103 AND U.S. ROUTE 7 AT PIERCES CORNER IN CLARENDON, GO SOUTHEAST ALONG ROUTE 103 FOR 2.3 MI (3.7 KM) TO THE INTERSECTION OF THE GREEN MOUNTAIN RAILROAD AND SITE OF MARK ON THE RIGHT, AT THE EDGE OF A STEEP BANK. THE LONG TRAIL ALSO CROSSES ROUTE 103 AT THIS POINT. STATION MARK IS A U.S. DEPARTMENT OF THE INTERIOR GEOLOGICAL SURVEY DISK SET IN THE TOP OF AN 8 FT (2.4 M) BY 5 FT (1.5 M) ROCK OUTCROP WHICH PROJECTS 1.5 FT (0.5 M) ABOVE GROUND SURFACE. LOCATED 77 FT (23.5 M) SOUTHWEST OF THE CENTERLINE OF ROUTE 103, 50 FT (15.2 M) WEST OF THE WEST RAIL OF THE GREEN MOUNTAIN RAILROAD, 41.5 FT (12.6 M) EAST-SOUTHEAST OF THE CENTER OF THE LONG TRAIL, 49 FT (14.9 M) SOUTH OF THE SOUTH CORNER OF A STEEL RAILROAD SIGNAL CONTROL BOX AND 2.5 FT (0.8 M) NORTH OF A FIBERGLASS WITNESS POST.

* Description provided by Vermont Agency of Transportation Geodetic Survey Unit

TRAVERSE TIES



* MAIN TRAVERSE COMPLETED: SEPT. 31, 1995 BY R. GILMAN P.C. & T. COMPANION

HORIZONTAL ALIGNMENT NAME: DRIVE RIGHT

Description: OLD Route 103
 Report Date: 9 February 2011

STATION	NORTHING	EASTING
POB (14)	300+00.00	370153.8229 1531105.8492
POE (15)	301+30.00	370027.6433 1531137.1335
Tangent Direction:	S 13°55'29.27" E	
Tangent Length:	130.00	

HORIZONTAL ALIGNMENT NAME: TH4 MAINLINE

Description: Town Highway 4 Proposed
 Report Date: 9 February 2011

STATION	NORTHING	EASTING
POB (100)	100+00.00	370066.8932 1530811.4980
PC (101)	100+59.33	370096.3275 1530863.0096
Tangent Direction:	N 60°15'21.22" E	
Tangent Length:	59.33	
Element: Circular		
PC (101)	100+59.33	370096.3275 1530863.0096
PI ()	101+14.71	370123.8044 1530911.0957
CC (102)		369853.6589 1531001.6730
PT (103)	101+68.68	370130.8680 1530966.0262
Radius:	279.49	
Delta:	22°24'59.65" Right	
Degree of Curvature (Arc):	20°30'00.00"	
Length:	109.35	
Tangent:	55.38	
Chord:	108.65	
Middle Ordinate:	5.33	
External:	5.43	
Tangent Direction:	N 60°15'21.22" E	
Radial Direction:	S 29°44'38.78" E	
Chord Direction:	N 71°27'51.04" E	
Radial Direction:	S 07°19'39.14" E	
Tangent Direction:	N 82°40'20.86" E	
Element: Linear		
PT (103)	101+68.68	370130.8680 1530966.0262
PC (104)	102+04.06	370135.3808 1531001.1200
Tangent Direction:	N 82°40'20.86" E	
Tangent Length:	35.38	

TH4 MAINLINE (CONTINUED)

Element: Circular			
PC (104)	102+04.06	370135.3808	1531001.1200
PI ()	103+25.54	370150.8749	1531121.6108
CC (105)		371271.9380	1530854.9684
PT (106)	104+46.12	370191.2880	1531236.1747
Radius:	1145.92		
Delta:	12°06'11.11" Left		
Degree of Curvature (Arc):	05°00'00.00"		
Length:	242.06		
Tangent:	121.48		
Chord:	241.61		
Middle Ordinate:	6.39		
External:	6.42		
Tangent Direction:	N 82°40'20.86" E		
Radial Direction:	S 07°19'39.14" E		
Chord Direction:	N 76°37'15.31" E		
Radial Direction:	S 19°25'50.25" E		
Tangent Direction:	N 70°34'09.75" E		
Element: Linear			
PT (106)	104+46.12	370191.2880	1531236.1747
POE (107)	106+23.00	370250.1293	1531402.9790
Tangent Direction:	N 70°34'09.75" E		
Tangent Length:	176.88		

DATUM	
VERTICAL	NAVD 88
HORIZONTAL	NAD 83 (92)
ADJUSTMENT	Compass

PROJECT NAME:	SHREWSBURY
PROJECT NUMBER:	STP 1443 (44)
FILE NAME:	94J154\survey\94J154e+1.dgn
PLOT DATE:	11-MAY-2017
PROJECT LEADER:	J. LACROIX
DRAWN BY:	R. Bullock
DESIGNED BY:	U. STANLEY
CHECKED BY:	M. LONGSTREET
TIE SHEET	SHEET 6 OF 11