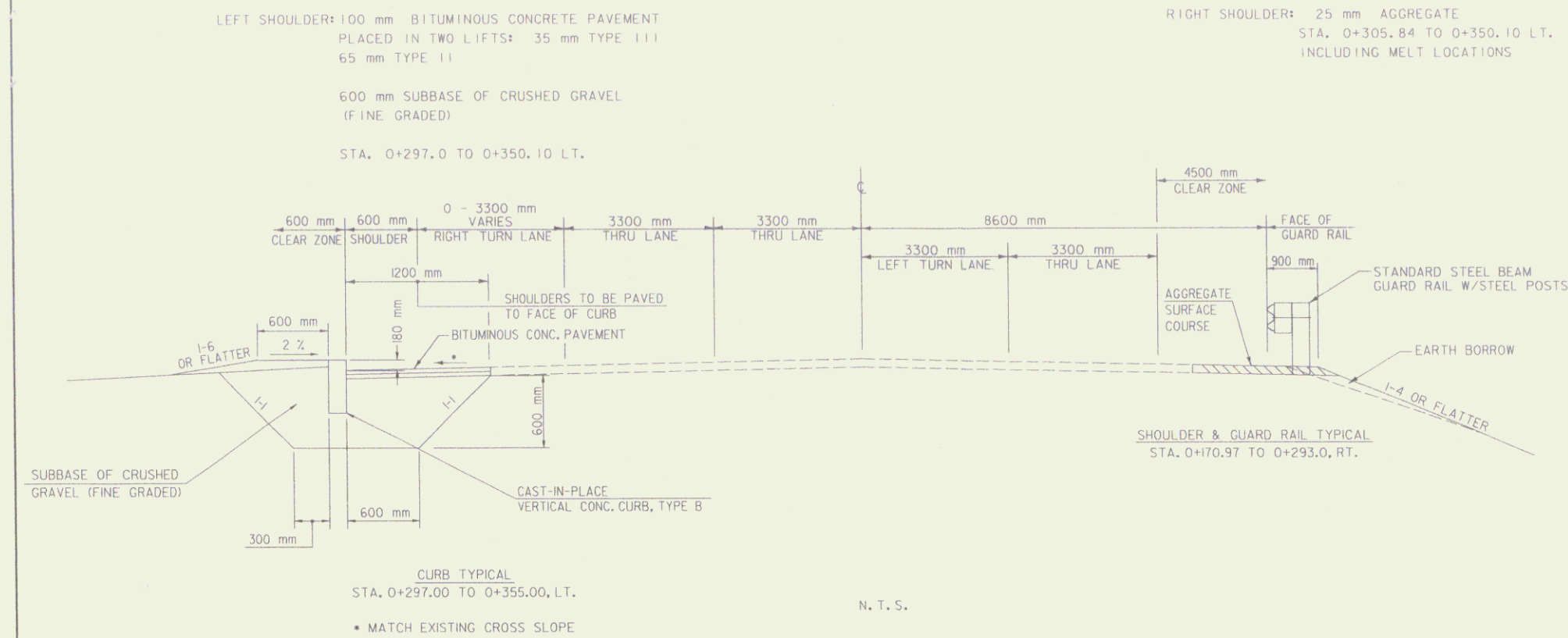


### TYPICAL SECTION CURB AND GUARD RAIL PLACEMENT



### NOTES

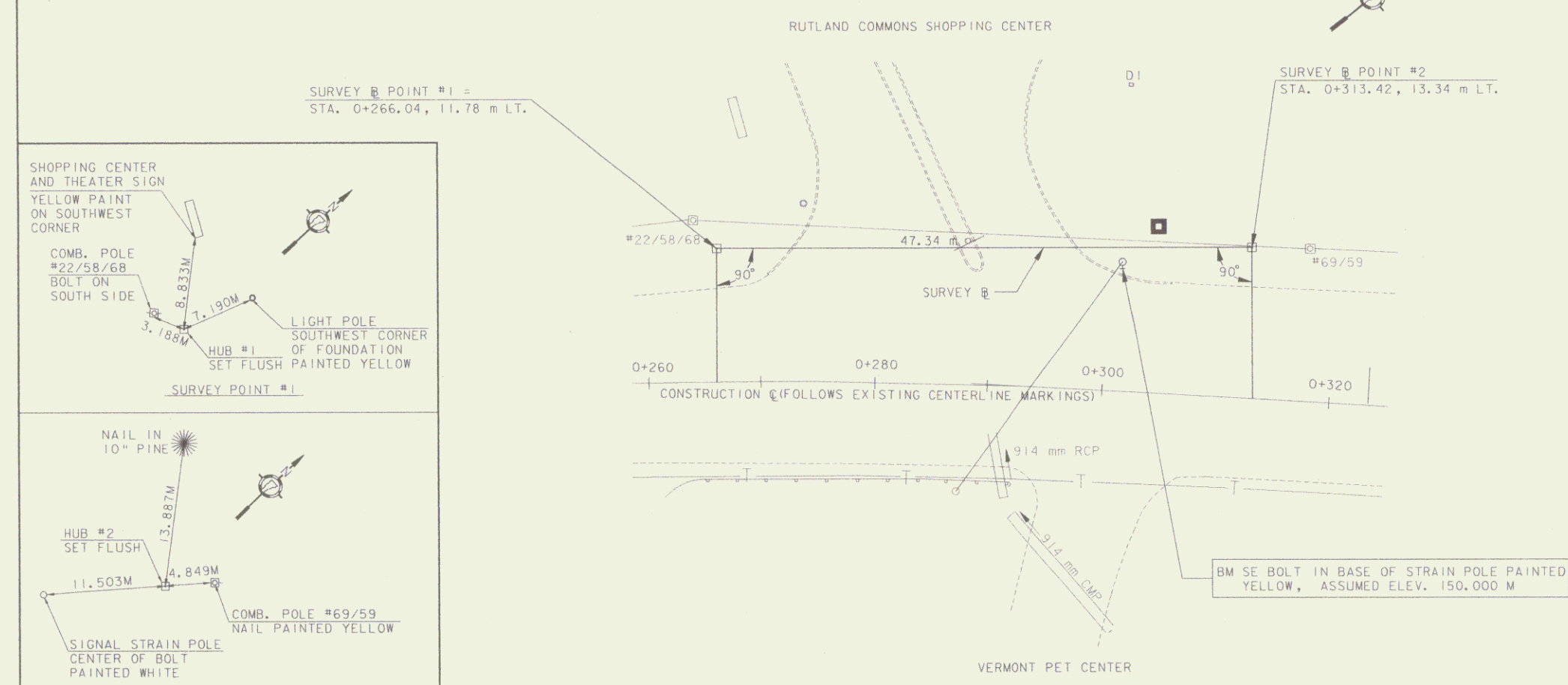
- EXISTING SHOULDER MATERIAL ON RIGHT SIDE DEEMED UNSUITABLE BY THE RESIDENT ENGINEER, SHALL BE EXCAVATED (PAID AS ALL PURPOSE EXCAVATOR OR GRADER RENTAL) TO A DEPTH OF 75 mm, OR AS DIRECTED BY THE ENGINEER. MATERIAL REMOVED SHALL BE REPLACED WITH SUBBASE OF CRUSHED GRAVEL (FINE GRADED). EXCAVATED MATERIAL SHALL BE SPREAD ON THE ADJACENT SLOPES OR REMOVED FROM PROJECT, AS DIRECTED BY THE ENGINEER.
- 900 mm OF BACKING IS REQUIRED BEHIND THE FACE OF GUARD RAIL WITH LB M POSTS.

URBAN AREAS - SEED MIXTURE

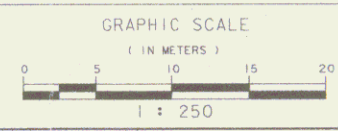
% MASS	KG/HA	NAME	PUR %	GERM %
42.2	38	CREeping RED FESCUE	98	85
10.0	9	PERENNIAL RYE GRASS	95	90
42.2	38	KENTUCKY BLUE GRASS	85	85
5.6	5	ANNUAL RYE GRASS	95	85
100.0	90.0			

- SEED MIXTURE:  
SHALL NOT HAVE A WEED CONTENT EXCEEDING 0.40% BY MASS AND SHALL BE FREE OF ALL NOXIOUS SEED.
- SEED:  
TO BE APPLIED PER SEEDING FORMULAS OR AS DIRECTED BY THE ENGINEER.
- FERTILIZER:  
FORMULA 10-20-10, TO BE USED WITH SEED, APPLIED AT THE RATE OF 560 KG/HA. (HYDRO SEEDERS MAY USE 19-19-19 FORMULA.)
- AGRICULTURAL LIMESTONE:  
TO BE APPLIED AT THE RATE OF 4500 KG/HA, OR AS DIRECTED BY THE ENGINEER.
- HAY MULCH:  
TO BE PLACED ON EARTH SLOPES AT THE RATE OF 4500 KG/HA, OR AS DIRECTED BY THE ENGINEER.
- TOPSOIL:  
TO BE USED AS INDICATED ON THE PLANS, OR AS DIRECTED BY THE ENGINEER.
- MARKER POSTS:  
TO BE PLACED AS INDICATED OR AS DIRECTED BY THE ENGINEER.

JUN 20 2002



### HORIZONTAL & VERTICAL CONTROL



SURVEY POINT TIES N.T.S.

DATUM	ASSUMED
VERTICAL	ASSUMED
HORIZONTAL	ASSUMED

NOTE:  
ALL DIMENSIONS IN MILLIMETERS  
EXCEPT WHERE OTHERWISE INDICATED

**PROJECT  
TYPICAL,  
HORIZONTAL  
& VERTICAL  
CONTROL**

PROJECT: <b>RUTLAND TOWN</b>	PROJECT NO.: <b>NHG SGNL(5)S</b>
DESIGN FILE NAME: IPARM FILE NAME: SURVEYED BY: N/A DESIGNED BY: GAS	PLOT DATE: 14 JUN 99 SURVEY DATE: N/A DRAWN BY: W-M
R.O.W. SHEET <b>2</b> OF 5 SHEETS	