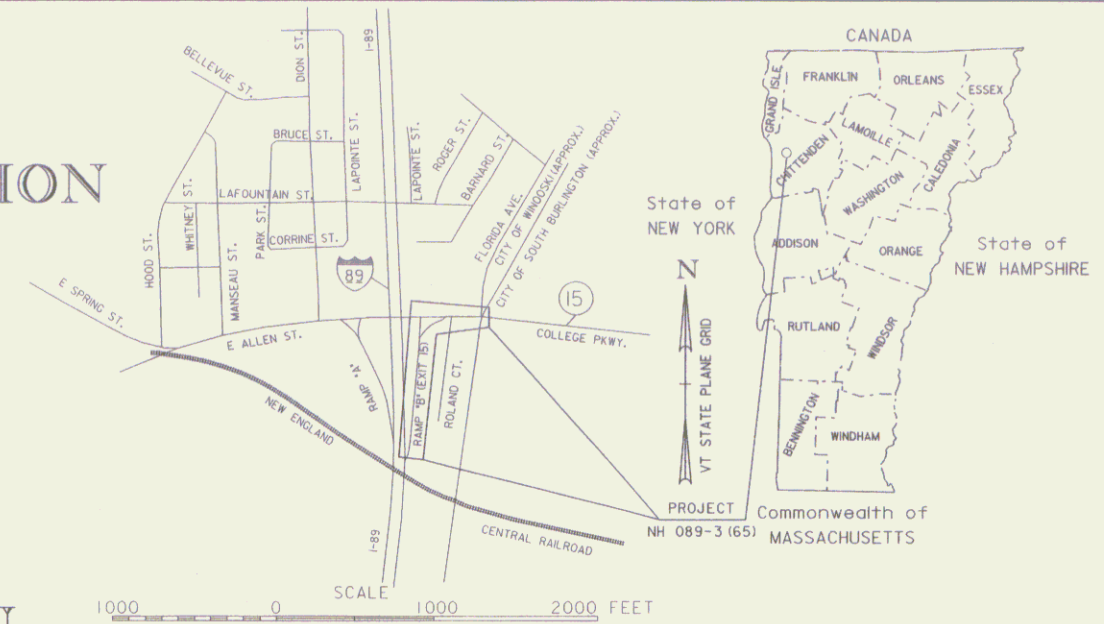


STATE OF VERMONT
AGENCY OF TRANSPORTATION



R. O. W. PLANS

CITY OF WINOOSKI
COUNTY OF CHITTENDEN
SAFETY IMPROVEMENTS TO INTERSTATE 89 NB EXIT 15 OFF RAMP "B"
AT VT ROUTE 15 (PRINCIPAL ARTERIAL)



BEGINNING ON THE I-89 NORTHBOUND EXIT 15 OFF-RAMP, RAMP "B", APPROXIMATELY 595 FEET (0.113 MILE) SOUTH OF VERMONT ROUTE 15 AND EXTENDING NORTHERLY ALONG RAMP "B" FOR A DISTANCE OF 567.66 FT (0.108 MILE) AND 177.21 FEET (0.034 MILE) ALONG THE SLIP RAMP FOR RAMP "B".
LENGTH OF PROJECT = 744.87 FT = 0.141 MILES
THIS PROJECT CONSISTS OF FULL DEPTH RECONSTRUCTION AND WIDENING OF RAMP "B", INSTALLATION OF CURB, SIDEWALK, PAVEMENT MARKINGS, COLD PLANING AND OVERLAY, DRAINAGE, NEW SIGNAGE AND THE INSTALLATION OF NEW TRAFFIC SIGNALS AT THE INTERSECTION OF RAMP "B" AND VERMONT ROUTE 15 AND AT THE INTERSECTION OF ROLAND COURT AND VERMONT ROUTE 15.

LENGTH OF R.O.W. PROJECT = 203 FEET

I-89 NORTHBOUND OFF-RAMP TRAFFIC DATA

2010 AADT	8,500
2020 AADT	8,800
2030 AADT	9,200
2030 DHV	1,155
D	100%
T	4%
V	35 MPH
2010-2030 ESAL	2,240,000
2010-2050 ESAL	5,555,000

VT-15 FROM I-89SB ON-RAMP TO NB OFF-RAMP TRAFFIC DATA

2010 AADT	24,000
2020 AADT	25,000
2030 AADT	26,200
2030 DHV	3,164
D	64%
T	3%
V	25MPH

VT-15 FROM I-89 NB OFF-RAMP TO ROLAND COURT TRAFFIC DATA

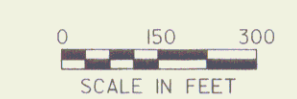
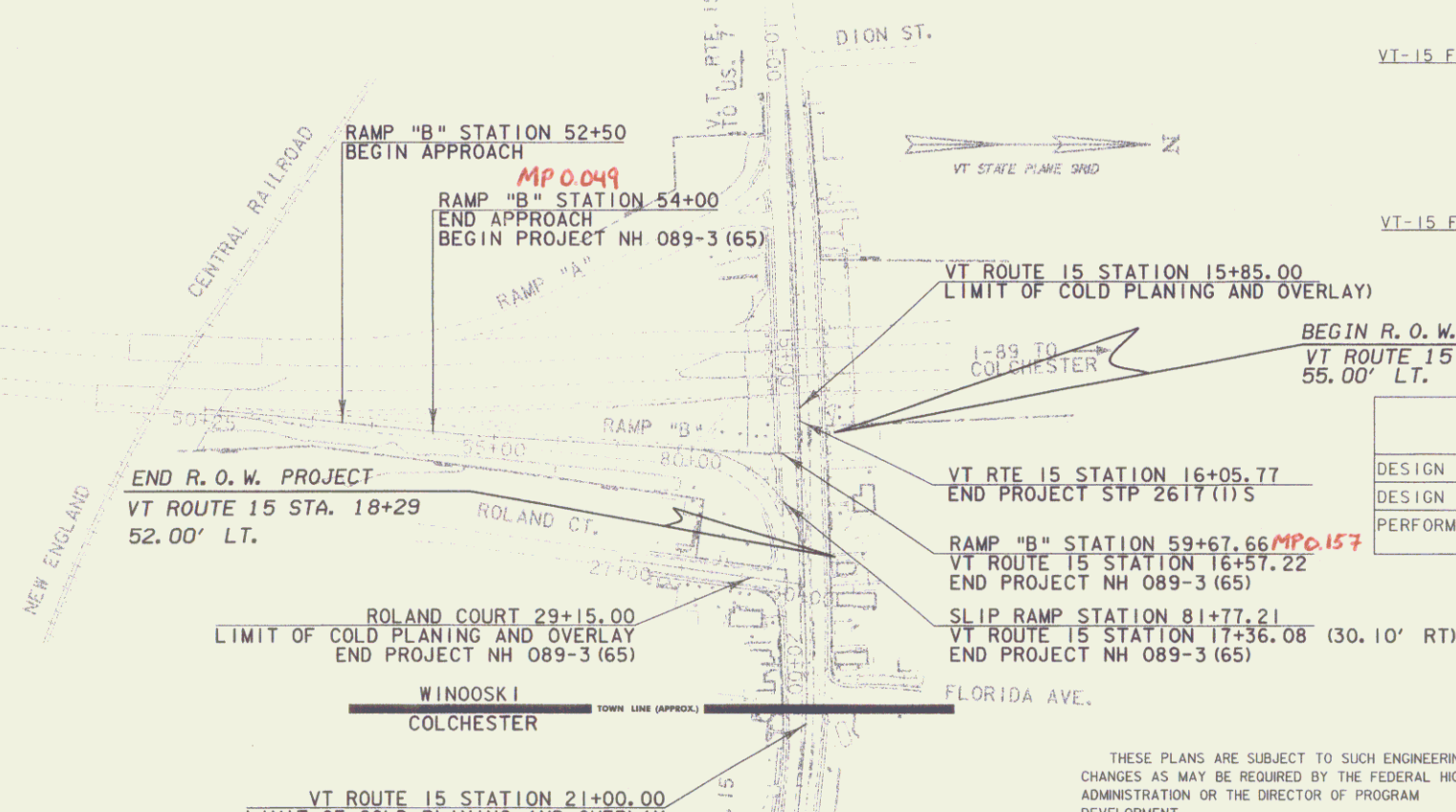
2010 AADT	27,000
2020 AADT	28,000
2030 AADT	29,400
2030 DHV	3,422
D	53%
T	3%
V	25MPH

BITUMINOUS CONCRETE PAVEMENT SUPER PAVE MIXTURE DESIGN CRITERIA	
DESIGN LIFE ESAL (DESIGN LANE)	2,240,000
DESIGN NUMBER OF GYRATIONS	65
PERFORMANCE GRADED ASPHALT BINDER	SEE SECTION 490 GENERAL SPECIAL PROVISIONS

CONVENTIONAL SYMBOLS

COUNTY LINE	
TOWN LINE	
LIMITS OF ACCESS	
POINT OF ACCESS	
FENCE LINE	
STONE WALL	
TRAVELED WAY	
RAILROAD	
SURVEY LINE	
CULVERT	
POWER POLE	
TELEPHONE POLE	
TREES	
CONTROL OF ACCESS	
PROPERTY LINE	
R.O.W. TAKING LINE	
SLOPE RIGHTS	
TOP OF CUT	
TOE OF SLOPE	

SURVEYED BY: L. ORVIS P.C./G. HITCHCOCK
SURVEYED DATE: 04-03-2008
DATUM
VERTICAL NAVD_88
HORIZONTAL NAD_83/1996



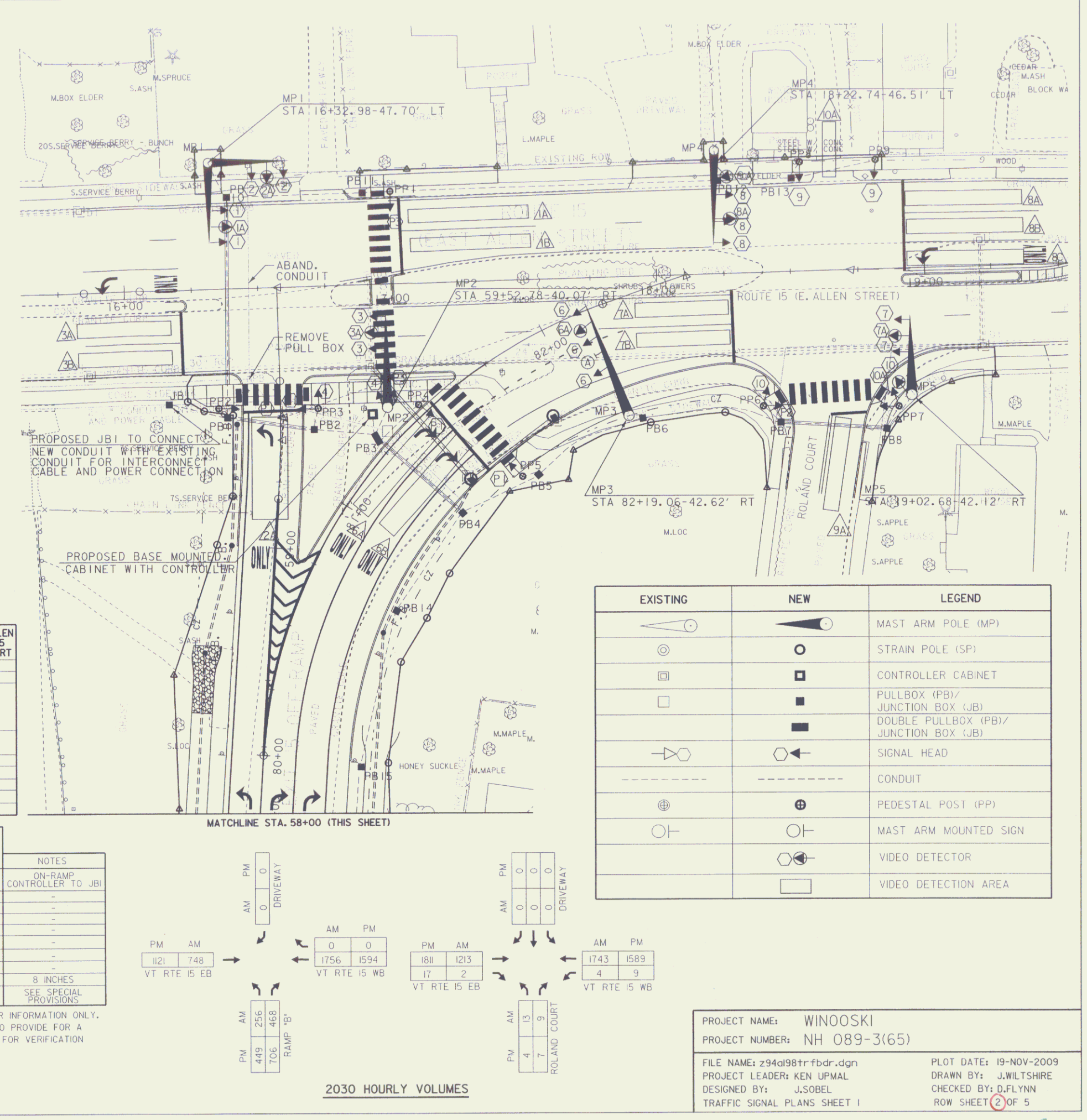
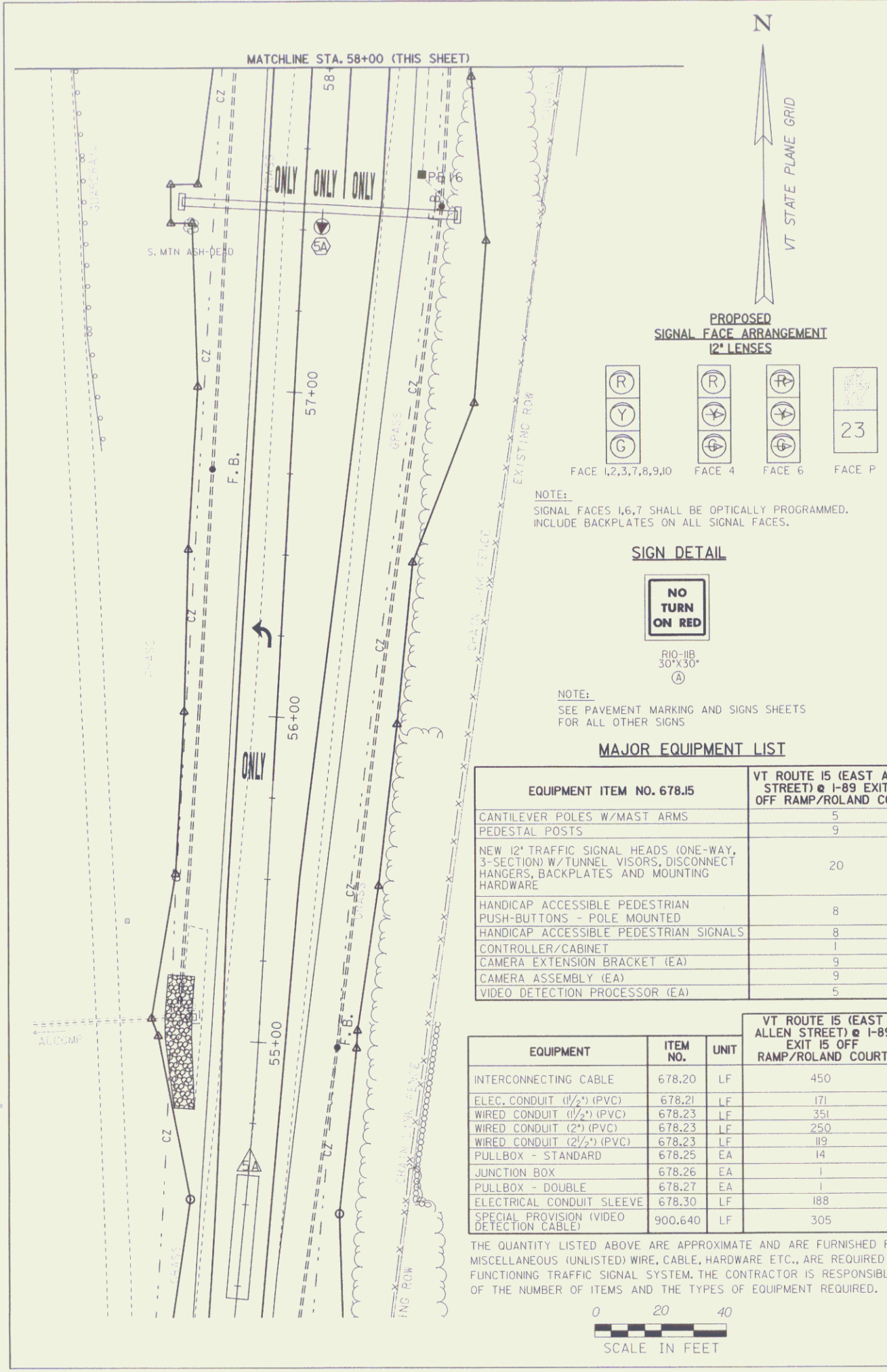
THESE PLANS ARE SUBJECT TO SUCH ENGINEERING CHANGES AS MAY BE REQUIRED BY THE FEDERAL HIGHWAY ADMINISTRATION OR THE DIRECTOR OF PROGRAM DEVELOPMENT.
CONSTRUCTION IS TO BE CARRIED ON IN ACCORDANCE WITH THESE PLANS AND THE STANDARD SPECIFICATIONS FOR CONSTRUCTION DATED 2006, AS APPROVED BY THE FEDERAL HIGHWAY ADMINISTRATION ON JUNE 15, 2006 FOR USE ON THIS PROJECT, INCLUDING ALL SUBSEQUENT REVISIONS AND SUCH REVISED SPECIFICATIONS AND SPECIAL PROVISIONS AS ARE INCORPORATED IN THESE PLANS.

APPROVED: *Robert J. Schmitt* DATE: 1/4/10
Director of Program Development

APPROVED: *Robert J. Schmitt* DATE: 1/4/2010
Chief of Right of Way

WINOOSKI
NH 089-3 (65)
R.O.W. SHEET 1 OF 5 SHEETS

Route I-89 R-B
Pin # 94A198



RIGHT - OF - WAY DETAIL SHEET

TABLE OF PROPERTY ACQUISITION

PARCEL NO.	PROPERTY OWNER	SHEET NO.	BEGINNING STATION	ENDING STATION	TAKE	REMAINDER	RIGHT			RECORDING DATA				REMARKS	
					AREA±	AREA±	TYPE	(T)(P)	AREA ±	TITLE	DATE	TOWN / CITY	BOOK		PAGE
1	MOORE, CHARLES T. & JOANNE M.	5	16+26 LT	16+65 LT			INSTALL & MAINTAIN	(P)	460 SF	WD	02/17/10	WINOOSKI	205	590-591	MAST ARM POLE, SIGNALS & CONDUIT. INCLUDES REMOVAL OF EXISTING POLE
			16+26 LT 16+34 LT	16+60 LT 16+63 LT			REMOVE LANDSCAPE	(T) (T)							2 S. ASH TREES INSTALL 2 TREES AND HEDGE
2	TIPSON, WAYNE P. & MICHELLE L.	5	18+17 LT 18+23 LT 18+07 LT	18+24			INSTALL & MAINTAIN REMOVE UTILITY	(P) (T) (T)	60 SF	WD	02/22/10	WINOOSKI	205	604-605	MAST ARM POLE & CONDUIT FENCE ADJUST ELEVATION OF VALVE BOX
3	COTA, MICHELLE D.	5	18+23 LT 18+23 LT	18+29 LT			INSTALL & MAINTAIN REMOVE	(P) (T)	43 SF	WD	02/22/10	WINOOSKI	205	606-607	MAST ARM POLE & CONDUIT FENCE
4A	CITY OF WINOOSKI	5	18+39 RT 18+46 RT	18+85 RT 18+87 RT			INSTALL APPROACH	(T) (T)		GTR	02/22/10	WINOOSKI	205	597-598	SIDEWALKS & CURB ROLAND COURT
4B		5	20+30 LT 20+30 LT	20+40 LT 20+78 LT			INSTALL APPROACH	(T) (T)							SIDEWALK & CURB FLORIDA AVE.
4C		5	15+85	21+00			ALL R. T. & I.								UTILITY EASEMENTS
5	CHAMPLAIN WATER DISTRICT	5	15+85	21+00			ALL R. T. & I.								UTILITY EASEMENTS
6	VERMONT GAS SYSTEMS, INC.	5	15+85	21+00			ALL R. T. & I.								UTILITY EASEMENTS
7	TELEPHONE OPERATING COMPANY OF VERMONT	5	15+85	21+00			ALL R. T. & I.								UTILITY EASEMENTS

TABLE OF REVISIONS

REVISION NO.	SHEET NO.	DESCRIPTION	DATE
1	3.5	PARCEL NO. 4. CREATE NEW PARCEL - CITY OF WINOOSKI. PER C.O. 9598. MADE BY: MR	01/27/10
		APPROVED BY: HP	
2	3	PARCEL NO. 4 CITY OF WINOOSKI. ADD PARCEL 4C. ADD PARCELS 5, 6 & 7. ALL UTILITIES. PER C.O. 9599. MADE BY: MR	02/09/10
		APPROVED BY: HP	

PLOT DATE 04/02/10

PLAN LEGEND

	EXISTING RIGHT-OF-WAY
	TAKING WITH ACCESS
	TAKING WITHOUT ACCESS
	CLEAR ZONE
	PROPERTY LINE

	TOE OF SLOPE
	TOP OF CUT
	SLOPE RIGHT
	CONSTRUCTION RIGHT
	PROJECT DEMARCATION FENCE

EC	EROSION CONTROL
(P)	-PERMANENT
(T)	-TEMPORARY
DR.	-DRAINAGE RIGHT
DIT.	-DITCHING RIGHT
CH	-CHANNEL RIGHT
DRIVE	-DRIVE RIGHT
CUL.	-CULVERT RIGHT
C&T	-CLEARING & TRIMMING RIGHT
SR	-SLOPE RIGHT
UE	-UTILITY EASEMENT

APPROVED: HARRY PETROVS DATE: 01-04-10
CHIEF, PLANS & TITLES

PROJECT NAME: WINOOSKI
PROJECT NUMBER: NH 089-3(65)
FILE NAME: r94e198 DetailSheet.xls
PROJECT LEADER: K. UPMAL
DESIGNED BY: J. SOBEL
R.O.W. SHEET 3 OF 5

PLOT DATE:
DRAWN BY: MR
CHECKED BY: EP
SHEET 12 OF 67

COLD PLANING, BITUMINOUS PAVEMENT

RAMP 'B' 52+50.0 ~ 53+00.0

CLEARING AND GRUBBING, INCLUDING INDIVIDUAL TREES AND STUMPS

RAMP 'B' 52+25 RT ~ 53+00 RT
RAMP 'B' 57+49 LT (S. MOUNTAIN ASH)

REMOVE EXISTING PAVEMENT (COMMON EXCAVATION)

RAMP 'B' 53+00.0 ~ 58+00.0
RAMP 'B' 54+78 LT ~ 55+35 LT (PAVED WATERWAY)

STONE FILL, TYPE I

RAMP 'B' 54+78 LT ~ 55+35 LT

STONE FILL, TYPE II

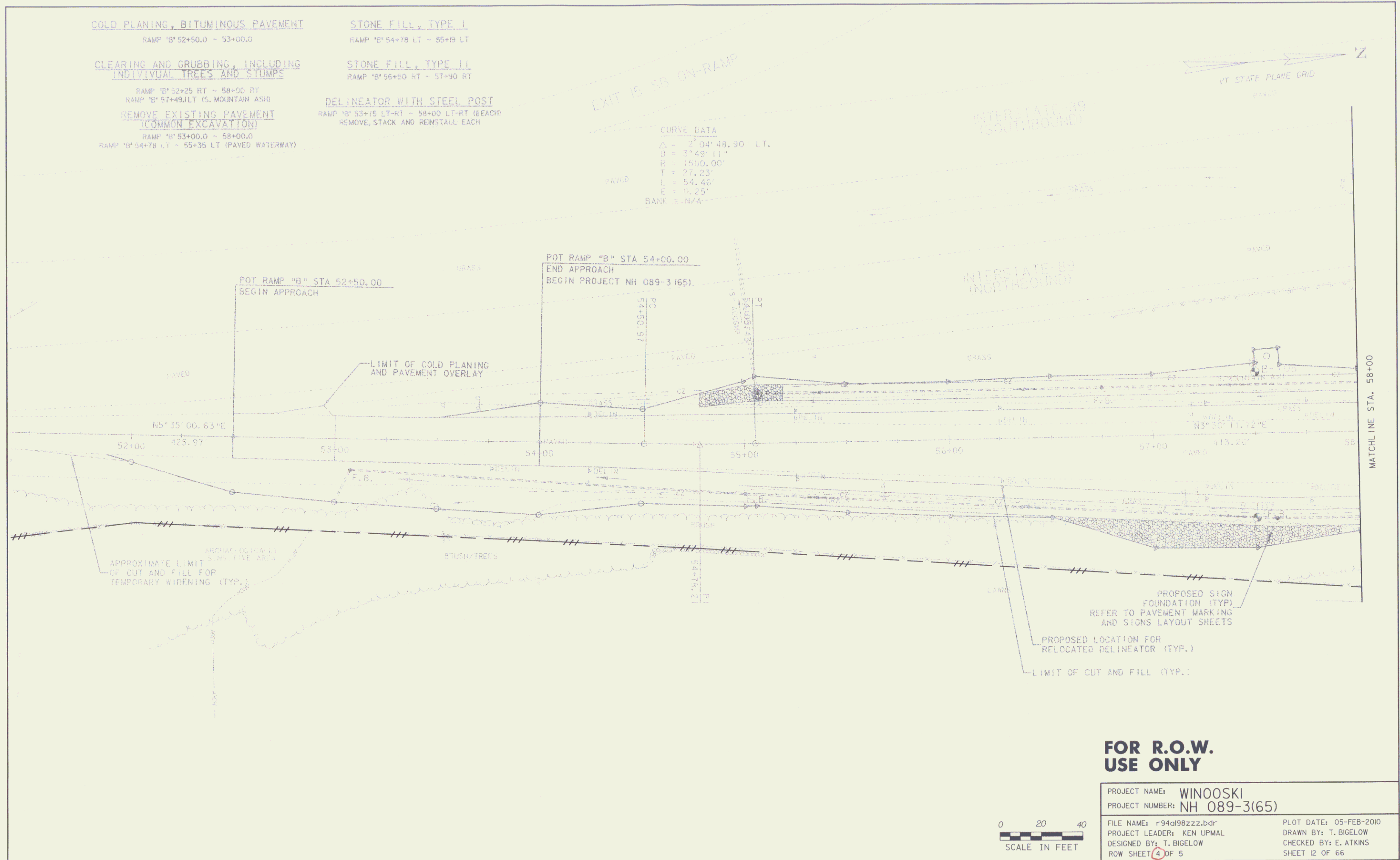
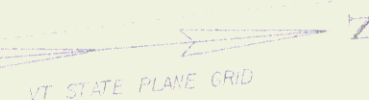
RAMP 'B' 56+50 RT ~ 57+90 RT

DELINEATOR WITH STEEL POST

RAMP 'B' 53+75 LT-RT ~ 58+00 LT-RT @ EACH
REMOVE, STACK AND REINSTALL EACH

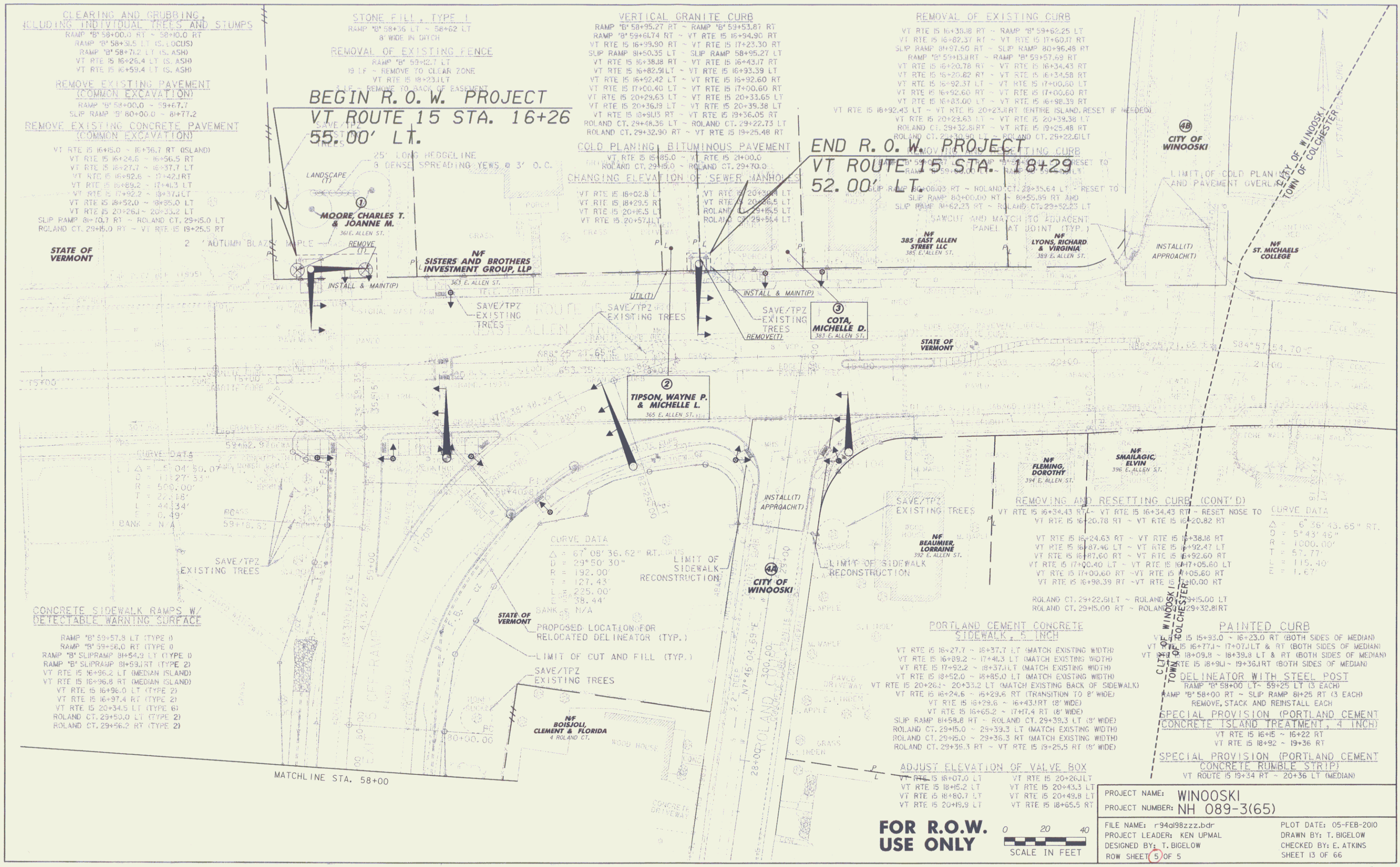
CURVE DATA

$\Delta = 2^{\circ} 04' 48.90''$ LT,
 $D = 3^{\circ} 49' 11''$
 $R = 1500.00'$
 $T = 27.23'$
 $L = 54.46'$
 $E = 0.25'$
BANK S. N/A



**FOR R.O.W.
USE ONLY**

PROJECT NAME:	WINOOSKI	PLOT DATE:	05-FEB-2010
PROJECT NUMBER:	NH 089-3(65)	DRAWN BY:	T. BIGELOW
FILE NAME:	r94d198zzz.bdr	CHECKED BY:	E. ATKINS
PROJECT LEADER:	KEN UPMAL	SHEET 12 OF 66	
DESIGNED BY:	T. BIGELOW		
ROW SHEET:	4 OF 5		



CLEARING AND GRUBBING, INCLUDING INDIVIDUAL TREES AND STUMPS
 RAMP 'B' 58+00.0 RT - 58+00.0 RT
 RAMP 'B' 58+35.5 LT (5' O.C.)
 RAMP 'B' 58+70.2 LT (5' ASH)
 VT RTE IS 16+25.4 LT (5' ASH)
 VT RTE IS 16+59.4 LT (5' ASH)

REMOVE EXISTING PAVEMENT (COMMON EXCAVATION)
 RAMP 'B' 58+00.0 - 58+70.2
 SLIP RAMP 'B' 60+00.0 - 60+77.2

REMOVE EXISTING CONCRETE PAVEMENT (COMMON EXCAVATION)
 VT RTE IS 16+85.0 - 16+76.7 RT (ISLAND)
 VT RTE IS 16+24.6 - 16+56.5 RT
 VT RTE IS 16+27.7 - 16+37.7 LT
 VT RTE IS 16+92.6 - 17+42.0 RT
 VT RTE IS 16+85.2 - 17+41.3 LT
 VT RTE IS 17+92.2 - 18+37.4 LT
 VT RTE IS 18+52.0 - 18+35.0 LT
 VT RTE IS 20+26.4 - 20+35.2 LT
 SLIP RAMP 'B' 10.7 RT - ROLAND CT. 29+5.0 RT
 ROLAND CT. 29+5.0 RT - VT RTE IS 19+25.5 RT

STONE FILL, TYPE 1
 RAMP 'B' 58+36 LT - 58+62 LT
 8' WIDE IN DITCH

REMOVAL OF EXISTING FENCE
 RAMP 'B' 59+52.7 LT
 19 LF - REMOVE TO CLEAR ZONE
 VT RTE IS 19+23.1 LT
 (IF - REMOVE TO BACK OF BASEMENT)

BEGIN R.O.W. PROJECT
VT ROUTE 15 STA. 16+26
55.00' LT.

VERTICAL GRANITE CURB
 RAMP 'B' 58+95.27 RT - RAMP 'B' 59+53.87 RT
 RAMP 'B' 59+67.74 RT - VT RTE IS 16+94.90 RT
 VT RTE IS 16+99.90 RT - VT RTE IS 17+23.30 RT
 SLIP RAMP 'B' 58+03.5 LT - SLIP RAMP 'B' 58+55.27 LT
 VT RTE IS 16+38.8 RT - VT RTE IS 16+43.7 RT
 VT RTE IS 16+82.91 LT - VT RTE IS 16+93.39 LT
 VT RTE IS 16+92.42 LT - VT RTE IS 16+92.60 RT
 VT RTE IS 17+00.40 LT - VT RTE IS 17+00.60 RT
 VT RTE IS 20+29.63 LT - VT RTE IS 20+33.65 LT
 VT RTE IS 20+36.9 RT - VT RTE IS 20+39.38 LT
 VT RTE IS 19+95.5 RT - VT RTE IS 19+36.05 RT
 ROLAND CT. 29+48.36 LT - ROLAND CT. 29+22.73 LT
 ROLAND CT. 29+32.90 RT - VT RTE IS 19+25.48 RT

REMOVAL OF EXISTING CURB
 VT RTE IS 16+30.8 RT - RAMP 'B' 59+62.25 LT
 VT RTE IS 16+82.37 RT - VT RTE IS 17+60.1 RT
 SLIP RAMP 'B' 59.50 RT - SLIP RAMP 'B' 59+96.48 RT
 RAMP 'B' 59+13.8 RT - RAMP 'B' 59+57.69 RT
 VT RTE IS 16+20.78 RT - VT RTE IS 16+34.43 RT
 VT RTE IS 16+20.82 RT - VT RTE IS 16+34.58 RT
 VT RTE IS 16+92.37 LT - VT RTE IS 17+00.60 LT
 VT RTE IS 16+92.60 RT - VT RTE IS 17+00.60 RT
 VT RTE IS 16+83.00 LT - VT RTE IS 16+98.39 RT
 VT RTE IS 16+92.43 LT - VT RTE IS 20+23.8 RT (ENTIRE ISLAND, RESET IF NEEDED)
 VT RTE IS 20+29.63 LT - VT RTE IS 20+39.38 LT
 ROLAND CT. 29+32.5 RT - VT RTE IS 19+25.48 RT
 ROLAND CT. 29+32.90 LT - ROLAND CT. 29+22.61 LT

REMOVING AND RESETTING CURB (CONT'D)
 VT RTE IS 16+34.43 RT - VT RTE IS 16+34.43 RT - RESET NOSE TO
 VT RTE IS 16+20.78 RT - VT RTE IS 16+20.82 RT
 VT RTE IS 16+24.63 RT - VT RTE IS 16+38.8 RT
 VT RTE IS 16+87.46 LT - VT RTE IS 16+92.47 LT
 VT RTE IS 16+87.60 RT - VT RTE IS 16+92.60 RT
 VT RTE IS 17+00.40 LT - VT RTE IS 17+00.60 LT
 VT RTE IS 17+00.60 RT - VT RTE IS 17+00.60 RT
 VT RTE IS 16+98.39 RT - VT RTE IS 17+00.00 RT
 ROLAND CT. 29+22.61 LT - ROLAND CT. 29+35.00 LT
 ROLAND CT. 29+5.00 RT - ROLAND CT. 29+32.8 RT

CONCRETE SIDEWALK RAMPS W/ DETECTABLE WARNING SURFACE
 RAMP 'B' 59+57.8 LT (TYPE 0)
 RAMP 'B' 59+58.0 RT (TYPE 0)
 RAMP 'B' SLIP RAMP 'B' 59.1 LT (TYPE 0)
 RAMP 'B' SLIP RAMP 'B' 59.1 RT (TYPE 2)
 VT RTE IS 16+96.2 LT (MEDIAN ISLAND)
 VT RTE IS 16+96.8 RT (MEDIAN ISLAND)
 VT RTE IS 16+96.0 LT (TYPE 2)
 VT RTE IS 16+97.4 RT (TYPE 2)
 VT RTE IS 20+34.5 LT (TYPE 6)
 ROLAND CT. 29+53.0 LT (TYPE 2)
 ROLAND CT. 29+36.2 RT (TYPE 2)

COLD PLANING BITUMINOUS PAVEMENT
 VT RTE IS 16+85.0 - VT RTE IS 20+00.0
 ROLAND CT. 29+48.0 - ROLAND CT. 29+70.0

CHANGING ELEVATION OF SEWER MANHOLES
 VT RTE IS 16+02.8 LT
 VT RTE IS 18+29.5 RT
 VT RTE IS 20+16.5 LT
 VT RTE IS 20+57.1 LT

REMOVING AND RESETTING CURB (CONT'D)
 SLIP RAMP 'B' 60+00.0 RT - ROLAND CT. 29+35.64 LT - RESET TO
 SLIP RAMP 'B' 60+00.0 RT - ROLAND CT. 29+52.23 LT
 SLIP RAMP 'B' 60+00.0 RT - ROLAND CT. 29+52.23 LT
 (SAW CUT AND MATCH TO ADJACENT PANEL AT JOINT (TYP.))

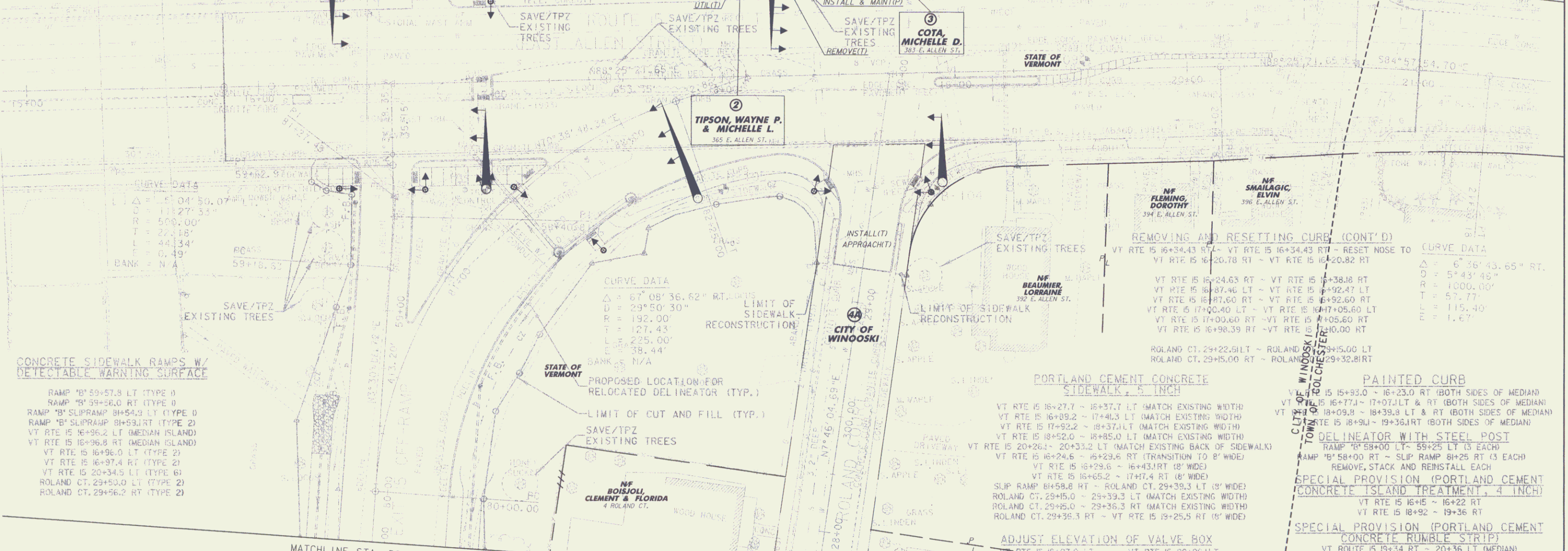
REMOVING AND RESETTING CURB (CONT'D)
 VT RTE IS 16+34.43 RT - VT RTE IS 16+34.43 RT - RESET NOSE TO
 VT RTE IS 16+20.78 RT - VT RTE IS 16+20.82 RT
 VT RTE IS 16+24.63 RT - VT RTE IS 16+38.8 RT
 VT RTE IS 16+87.46 LT - VT RTE IS 16+92.47 LT
 VT RTE IS 16+87.60 RT - VT RTE IS 16+92.60 RT
 VT RTE IS 17+00.40 LT - VT RTE IS 17+00.60 LT
 VT RTE IS 17+00.60 RT - VT RTE IS 17+00.60 RT
 VT RTE IS 16+98.39 RT - VT RTE IS 17+00.00 RT
 ROLAND CT. 29+22.61 LT - ROLAND CT. 29+35.00 LT
 ROLAND CT. 29+5.00 RT - ROLAND CT. 29+32.8 RT

PAINTED CURB
 VT RTE IS 15+93.0 - 16+23.0 RT (BOTH SIDES OF MEDIAN)
 VT RTE IS 16+77.1 - 17+07.1 LT & RT (BOTH SIDES OF MEDIAN)
 VT RTE IS 18+09.8 - 18+39.8 LT & RT (BOTH SIDES OF MEDIAN)
 VT RTE IS 18+91.1 - 19+35.1 RT (BOTH SIDES OF MEDIAN)

DELINEATOR WITH STEEL POST
 RAMP 'B' 58+00 LT - 58+25 LT (3 EACH)
 RAMP 'B' 58+00 RT - SLIP RAMP 'B' 25 RT (3 EACH)
 REMOVE, STACK AND REINSTALL EACH

SPECIAL PROVISION (PORTLAND CEMENT CONCRETE ISLAND TREATMENT, 4 INCH)
 VT RTE IS 16+5 - 16+22 RT
 VT RTE IS 18+92 - 19+36 RT

SPECIAL PROVISION (PORTLAND CEMENT CONCRETE RUMBLE STRIP)
 VT ROUTE IS 19+34 RT - 20+36 LT (MEDIAN)



CONCRETE SIDEWALK RAMPS W/ DETECTABLE WARNING SURFACE
 RAMP 'B' 59+57.8 LT (TYPE 0)
 RAMP 'B' 59+58.0 RT (TYPE 0)
 RAMP 'B' SLIP RAMP 'B' 59.1 LT (TYPE 0)
 RAMP 'B' SLIP RAMP 'B' 59.1 RT (TYPE 2)
 VT RTE IS 16+96.2 LT (MEDIAN ISLAND)
 VT RTE IS 16+96.8 RT (MEDIAN ISLAND)
 VT RTE IS 16+96.0 LT (TYPE 2)
 VT RTE IS 16+97.4 RT (TYPE 2)
 VT RTE IS 20+34.5 LT (TYPE 6)
 ROLAND CT. 29+53.0 LT (TYPE 2)
 ROLAND CT. 29+36.2 RT (TYPE 2)

CURVE DATA
 $\Delta = 67^{\circ} 08' 36.62''$ RT. CURS
 $D = 29^{\circ} 50' 30''$
 $R = 192.00'$
 $T = 127.43'$
 $L = 225.00'$
 $E = 38.44'$
 BANK = N/A

PROPOSED LOCATION FOR RELOCATED DELINEATOR (TYP.)

LIMIT OF CUT AND FILL (TYP.)

SAVE/TPZ EXISTING TREES

ADJUST ELEVATION OF VALVE BOX
 VT RTE IS 18+07.0 LT
 VT RTE IS 18+08.2 LT
 VT RTE IS 18+80.7 LT
 VT RTE IS 20+19.9 LT

ADJUST ELEVATION OF VALVE BOX
 VT RTE IS 20+26.1 LT
 VT RTE IS 20+43.3 LT
 VT RTE IS 20+49.8 LT
 VT RTE IS 18+65.5 RT

PORTLAND CEMENT CONCRETE SIDEWALK, 8 INCH
 VT RTE IS 16+27.7 - 16+37.7 LT (MATCH EXISTING WIDTH)
 VT RTE IS 16+89.2 - 17+41.3 LT (MATCH EXISTING WIDTH)
 VT RTE IS 17+92.2 - 18+37.4 LT (MATCH EXISTING WIDTH)
 VT RTE IS 18+52.0 - 18+95.0 LT (MATCH EXISTING WIDTH)
 VT RTE IS 20+26.4 - 20+33.2 LT (MATCH EXISTING BACK OF SIDEWALK)
 VT RTE IS 16+24.6 - 16+29.6 RT (TRANSITION TO 8' WIDE)
 VT RTE IS 16+29.6 - 16+43.7 RT (8' WIDE)
 VT RTE IS 16+65.2 - 17+17.4 RT (8' WIDE)
 SLIP RAMP 'B' 58.8 RT - ROLAND CT. 29+39.3 LT (8' WIDE)
 ROLAND CT. 29+15.0 - 29+39.3 LT (MATCH EXISTING WIDTH)
 ROLAND CT. 29+45.0 - 29+36.3 RT (MATCH EXISTING WIDTH)
 ROLAND CT. 29+36.3 RT - VT RTE IS 19+25.5 RT (8' WIDE)

PROJECT NAME: WINOOSKI
PROJECT NUMBER: NH 089-3(65)

FILE NAME: r9401982zz.bdr
PROJECT LEADER: KEN UPMAL
DESIGNED BY: T. BIGELOW
ROW SHEET (5) OF 5

PLOT DATE: 05-FEB-2010
DRAWN BY: T. BIGELOW
CHECKED BY: E. ATKINS
SHEET 13 OF 66

FOR R.O.W. USE ONLY

0 20 40
 SCALE IN FEET