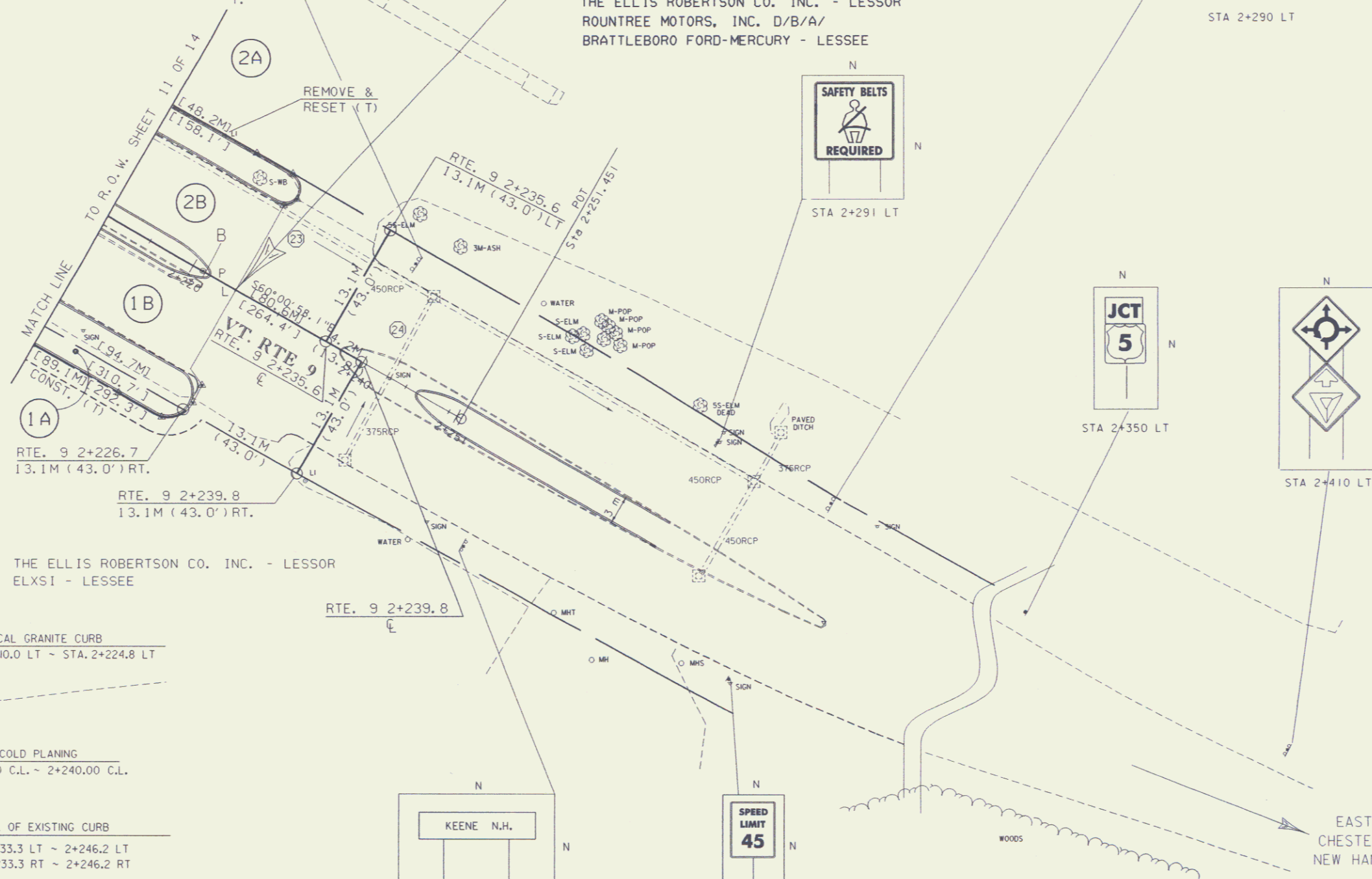
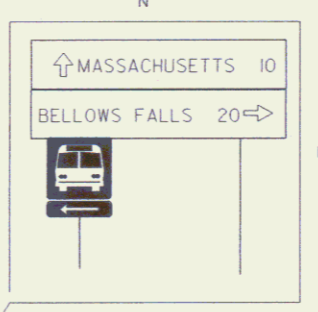


### STATION 2 + 225.000 END APPROACH CONSTRUCTION

THE ELLIS ROBERTSON CO. INC. - LESSOR  
 ROUNTREE MOTORS, INC. D/B/A/  
 BRATTLEBORO FORD-MERCURY - LESSEE



THE ELLIS ROBERTSON CO. INC. - LESSOR  
 ELXSI - LESSEE

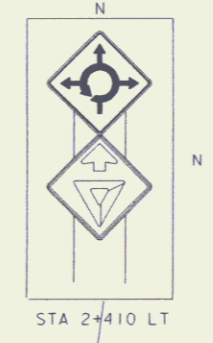
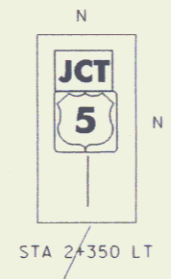
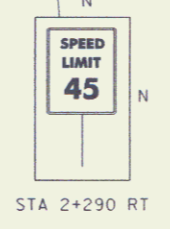
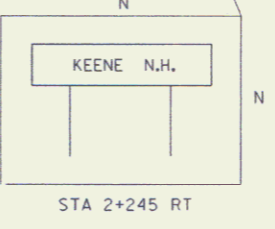
VERTICAL GRANITE CURB  
 VT 9 STA. 2+210.0 LT ~ STA. 2+224.8 LT

COLD PLANING  
 2+225.00 C.L. ~ 2+240.00 C.L.

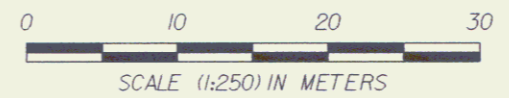
REMOVAL OF EXISTING CURB  
 VT 9 2+233.3 LT ~ 2+246.2 LT  
 VT 9 2+233.3 RT ~ 2+246.2 RT

REMOVING AND RESETTING CURB  
 VT 9 2+246.2 LT ~ 2+264.4 LT  
 VT 9 2+246.2 RT ~ 2+264.4 RT

CONSTRUCT CURBED ISLAND  
 VT 9 STA. 2+210.0 € ~ STA. 2+222.0 €  
 VT 9 STA. 2+210.0 RT ~ STA. 2+225.0 RT



LINES SHOWN ON THIS PLAN AS EXISTING  
 PROPERTY LINES P/L ARE BELIEVED TO  
 BE ACCURATE BUT SHOULD NOT BE RELIED  
 UPON FOR PURPOSES UNRELATED TO THE  
 STATE OF VERMONT'S ACQUISITION OF LAND  
 AND RIGHTS FOR THIS PROJECT.



FEB 21 2001



PROJECT:	BRATTLEBORO	PROJECT NO.:	NH 2000(18)
DESIGN FILE NAME:	C:\USERS\PROP\9309\rd\91z2.dgn	PLOT DATE:	25-FEB-1999
IPARM FILE NAME:	r\d914r.j	SURVEY DATE:	10-95
SURVEYED BY:	R. GLMAN	DRAWN BY:	K. UPMAL
SQUAD LEADER:	S. MENARD		
R. O. W. SHEET 13 OF 14			

13