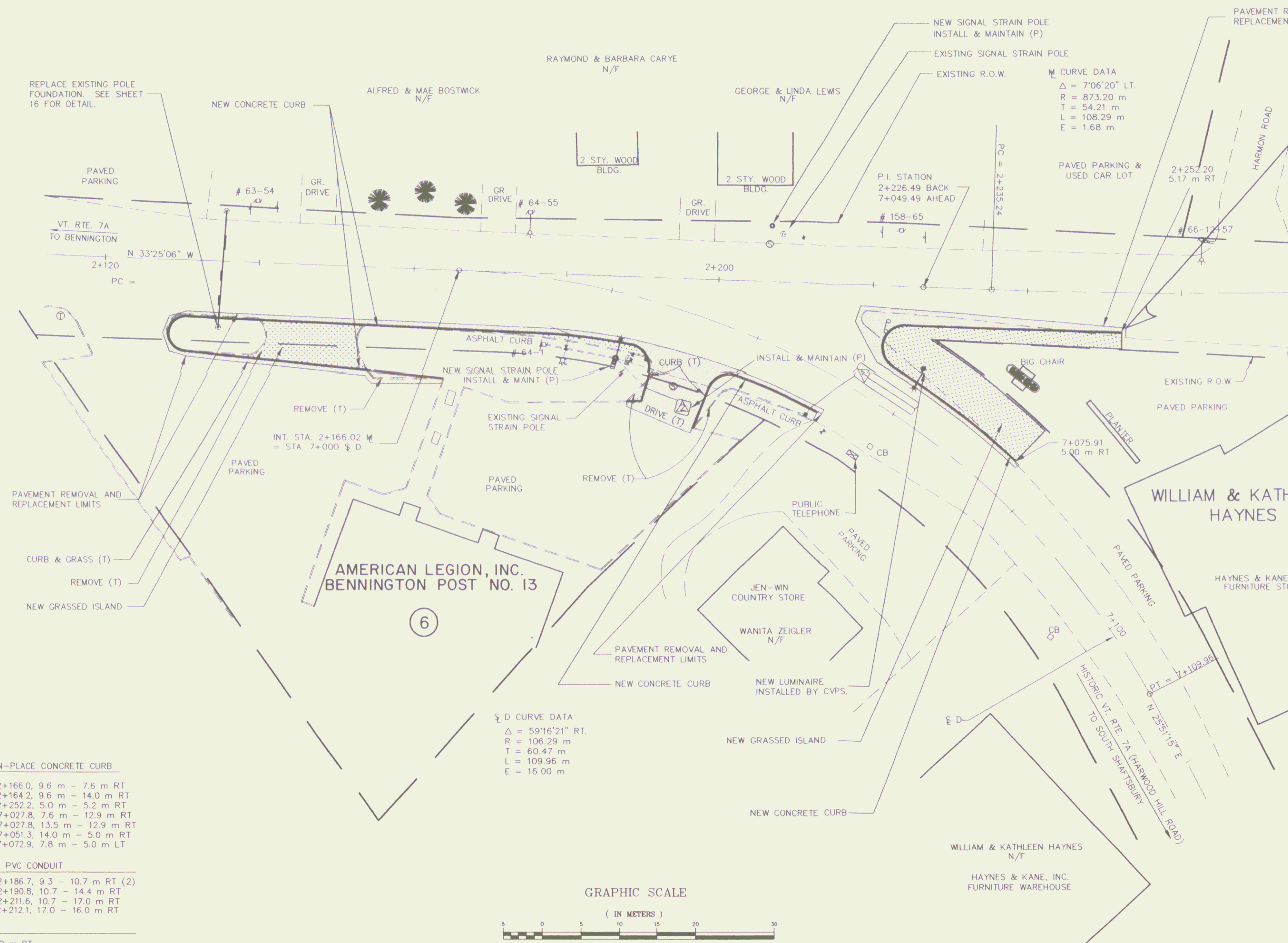
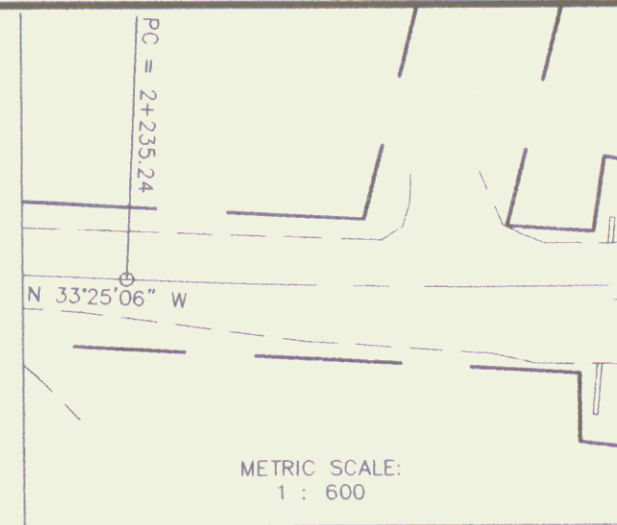
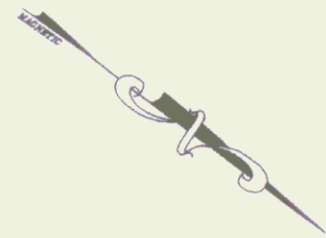


THE CONTRACTOR SHALL NOTIFY "DIGSAFE" AT 1-800-225-4977 PRIOR TO ANY EXCAVATION.



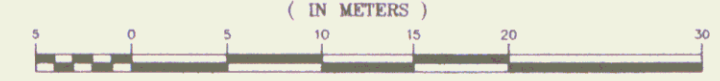
$\Delta = 7^{\circ}06'20''$ LT.
 $R = 873.20$ m
 $T = 54.21$ m
 $L = 108.29$ m
 $E = 1.68$ m

AMERICAN LEGION, INC.
BENNINGTON POST NO. 13

$\Delta = 59^{\circ}16'21''$ RT.
 $R = 106.29$ m
 $T = 60.47$ m
 $L = 109.96$ m
 $E = 16.00$ m

- NEW CAST-IN-PLACE CONCRETE CURB
- 2+128.4 - 2+166.0, 9.6 m - 7.6 m RT
 - 2+128.4 - 2+164.2, 9.6 m - 14.0 m RT
 - 2+221.7 - 2+252.2, 5.0 m - 5.2 m RT
 - 7+000.0 - 7+027.8, 7.6 m - 12.9 m RT
 - 7+025.6 - 7+027.8, 13.5 m - 12.9 m RT
 - 7+036.3 - 7+051.3, 14.0 m - 5.0 m RT
 - 7+054.1 - 7+072.9, 7.8 m - 5.0 m LT
- WIRED 51mm PVC CONDUIT
- 2+177.3 - 2+186.7, 9.3 - 10.7 m RT (2)
 - 2+186.7 - 2+190.8, 10.7 - 14.4 m RT
 - 2+186.7 - 2+211.6, 10.7 - 17.0 m RT
 - 2+211.6 - 2+212.1, 17.0 - 16.0 m RT
- PULL BOX
- 2+211.6, 17.0 m RT

GRAPHIC SCALE



1 : 300