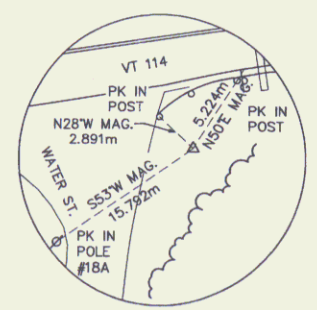
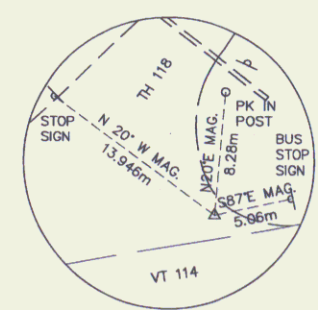


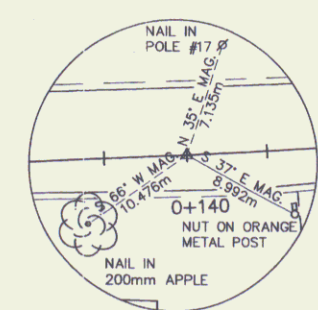
TR #1
REBAR & CAP
NORTHING = 227819.701
EASTING = 540428.260



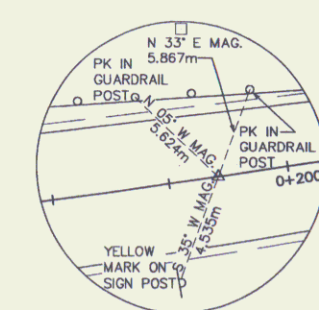
TR #2
REBAR & CAP
NORTHING = 227801.022
EASTING = 540392.865



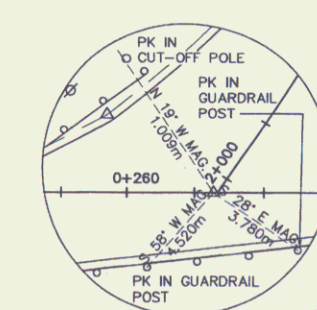
TR #3
REBAR & CAP
NORTHING = 227836.108
EASTING = 540521.046



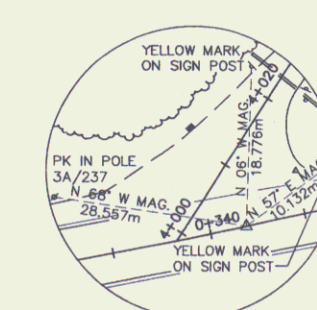
PC STA. 0+140.000
PK SET
NORTHING = 227798.800
EASTING = 540311.016



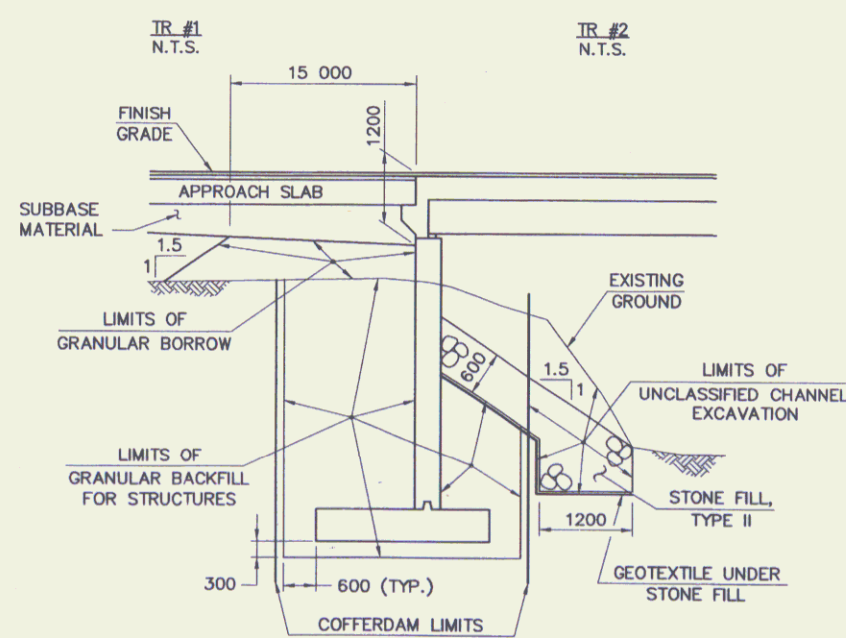
PT STA. 0+197.065
PK SET
NORTHING = 227804.051
EASTING = 540367.809



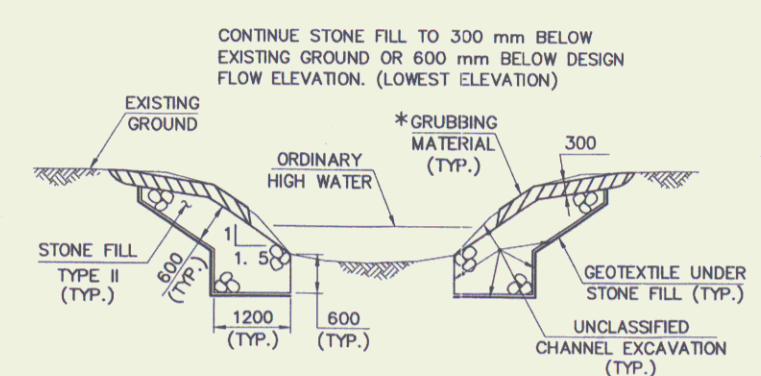
PC STA. 0+266.405
PK SET
NORTHING = 227814.271
EASTING = 540436.392



PT STA. 0+350.735
PK SET
NORTHING = 227829.619
EASTING = 540519.296

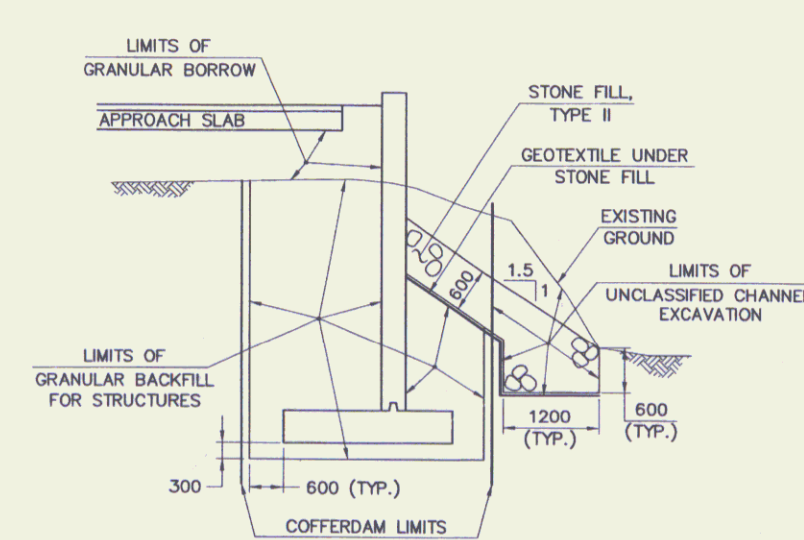


TYPICAL NEW ABUTMENT SECTION
NOT TO SCALE



TYPICAL CHANNEL SECTION
NOT TO SCALE

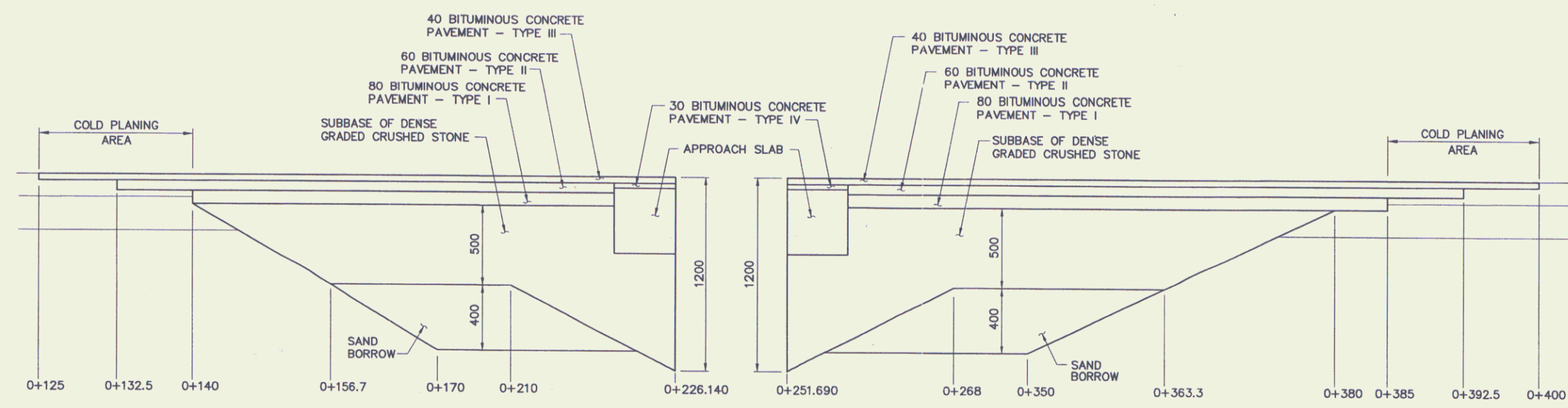
*GRUBBING MATERIAL SHALL NOT BE PLACED ON THE STONE FILL IN THE AREA UNDER THE BRIDGE. WHENEVER CHANNEL SLOPE INTERSECTS ROADWAY SUBBASE, GRUBBING MATERIAL SHALL BEGIN AT THE BOTTOM OF SUBBASE.



TYPICAL NEW WINGWALL SECTION
NOT TO SCALE

NOTES:

1. COFFERDAM LIMITS TO BE DETERMINED BY THE CONTRACTOR.
2. FOR PURPOSES OF ESTIMATING EARTHWORK QUANTITIES, THE LIMITS OF COFFERDAM HAVE BEEN ASSUMED TO BE 600 OUTSIDE THE PERIMETER OF THE FOOTING.
3. IF A COFFERDAM IS CONSTRUCTED WHICH IS MORE THAN THE INDICATED DISTANCE OUTSIDE THE FOOTING LIMITS, PAYMENT FOR ALL UNCLASSIFIED CHANNEL EXCAVATION INCLUDING THAT PORTION WHICH IS INSIDE THE COFFERDAM BUT OUTSIDE THE COFFERDAM LIMITS SHOWN WILL BE MADE AT THE CONTRACT UNIT PRICE FOR UNCLASSIFIED CHANNEL EXCAVATION.



SUBBASE TRANSITION DETAIL

STATIONS ALONG E (ELEVATION IN CUT AND FILL)
NOT TO SCALE

DATUM	
VERTICAL	NAVD 88
HORIZONTAL	NAD 83-92

STATE OF VERMONT AGENCY OF TRANSPORTATION

Town Of	LYNDON	Bridge No.	2
Highway No.	VT 114	Log Sta.	
		Surv. Sta.	
VT 114 OVER PASSUMPSIC RIVER			
TIE SHEET AND TYPICAL DETAILS			
Designed By	EIV/S.M. GUNN	Drawn By	R.F. CLARK
Checked By	Date	Bridge Design Supervisor	Date
PROJECT	LYNDON	PROJECT NO.	BHF 0269(10)
I.G.C. Info.	ROW SHEET 3 OF 15 SHEETS		

VANASSE HANGEN BRUSTLIN, INC.