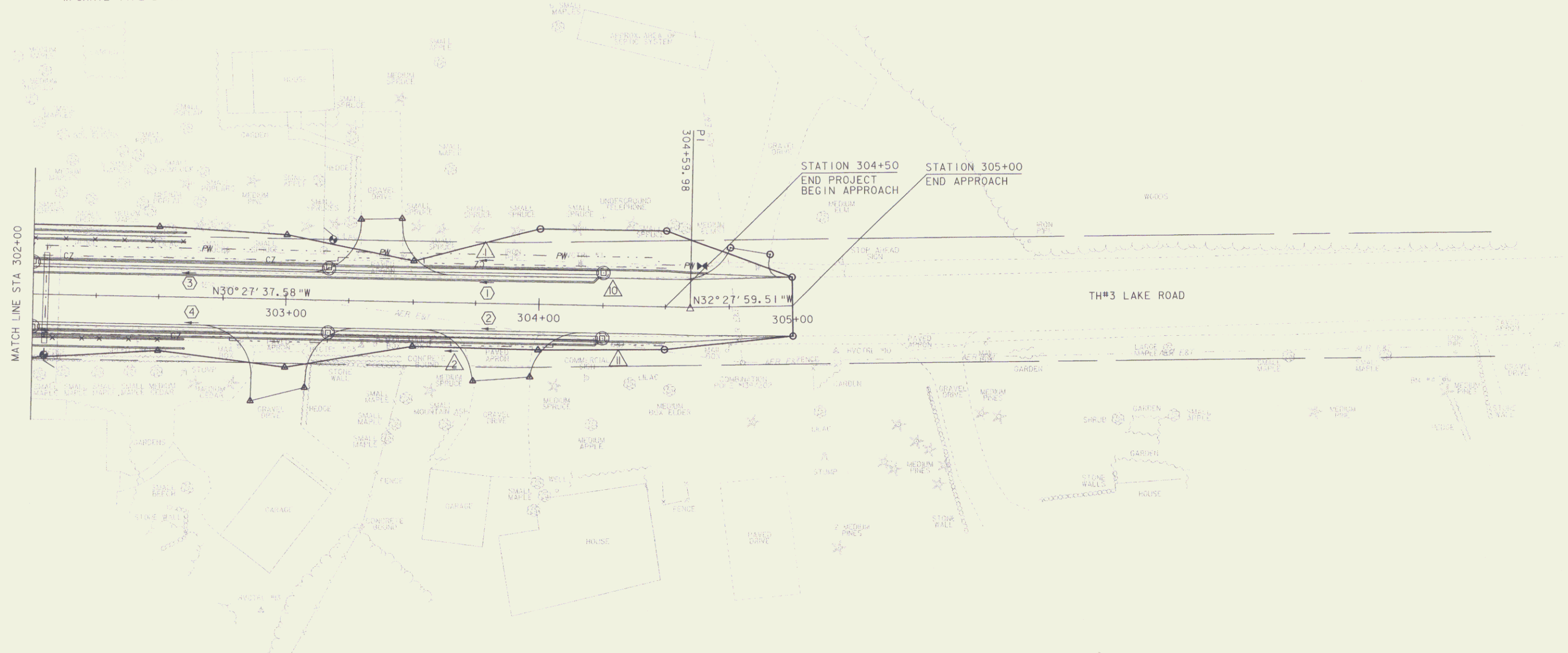
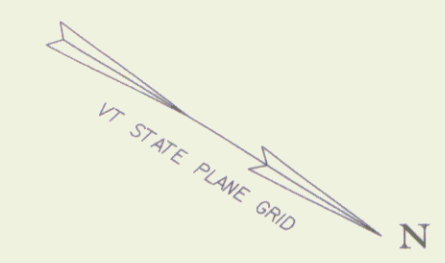


- NEW DRAINAGE
- ① STA 304+25.00 LT - 303+17.00 LT
NEW 18" X 108' RCP/CPEP (SL)
W/4' PRCCB @ STA 304+25.00 LT
W/GRATE TYPE D (1)
 - ② STA 304+25.00 RT - 303+17.00 RT
NEW 18" X 108' RCP/CPEP (SL)
W/4' PRCCB @ STA 304+25.00 RT
W/GRATE TYPE D (1)
 - ③ STA 303+17.00 LT - 302+00.00 LT
NEW 18" X 117' RCP/CPEP (SL)
W/4' PRCCB @ STA 303+17.00 LT
W/GRATE TYPE D (1)
 - ④ STA 303+17.00 RT - 302+00.00 RT
NEW 18" X 117' RCP/CPEP (SL)
W/4' PRCCB @ STA 303+17.00 RT
W/GRATE TYPE D (1)

- △ 605.10 UNDERDRAIN PIPE (6")
STA 304+21.22 LT - 301+02.39 LT
NEW 6" X 320' UNDERDRAIN
- △ 605.20 UNDERDRAIN CARRIER PIPE (6")
STA 304+23.55 LT - 304+21.22 LT
NEW 6" X 4' UNDERDRAIN CARRIER PIPE
- △ STA 304+22.00 RT - 301+02.23 RT
NEW 6" X 318' UNDERDRAIN
- △ STA 304+23.55 RT - 304+22.00 RT
NEW 6" X 4' UNDERDRAIN CARRIER PIPE



EXISTING & PROPOSED WATERLINES
ARE FOR REFERENCE ONLY PLEASE
REFER TO WATERLINE SHEETS XX-XX



PROJECT NAME:	MILTON	PLOT DATE:	29-JAN-2010
PROJECT NUMBER:	STP 5800 (2)	DRAWN BY:	D. LYMAN
FILE NAME:	92d289\ROW\92d289drn4.1	CHECKED BY:	J. DEVLIN
PROJECT LEADER:	J. SCHULTZ	R.O.W. SHEET:	13 OF 28
DESIGNED BY:	D. LYMAN		
R.O.W. DRAINAGE LAYOUT SHEET 4			