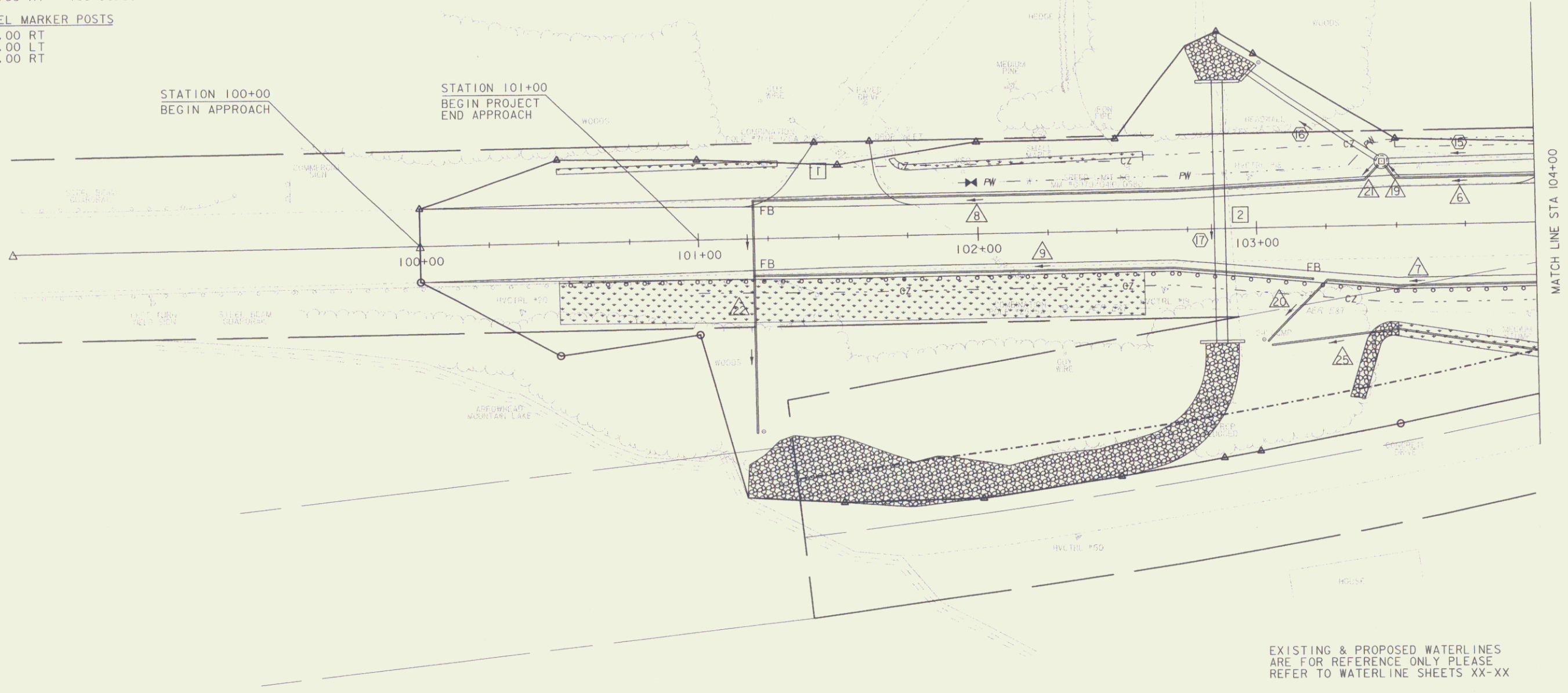
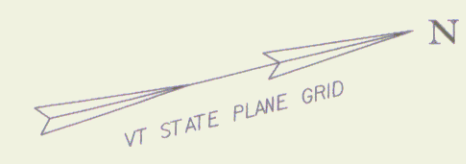


- NEW DRAINAGE**
- 15 STA 104+50.00 LT - 103+45.00 LT
NEW 24" X 105' RCP/CPEP (SL)
W/4' PRCCB @ STA 104+50.00 LT
W/GRATE TYPE A (1)
 - 16 STA 103+45.00 LT - 102+97.60 LT
NEW 24" X 58' PCCSP/CAAP/CPEP
W/REINFORCED CONCRETE HEADWALL (TYP) @ OUTLET
W/4' PRCCB @ STA 103+45.00 LT
W/GRATE TYPE A (1)
- SPECIAL PROVISION**
- 17 NEW DRAINAGE (48" CPEP)
STA 102+86.76 LT - 102+86.76 RT
NEW 48" X 95' CPEP
W/REINFORCED CONCRETE HEADWALL (TYP) @ INLET
W/REINFORCED CONCRETE HEADWALL (TYP) @ OUTLET
- 613.02 STONE FILL, TYPE II**
- STA 101+15.90 RT - 102+92.76 RT
 - STA 102+75.41 LT - 103+00.44 LT
 - STA 103+32.55 RT - 103+50.00 RT
- 619.16 STEEL MARKER POSTS**
- STA 101+22.00 RT
 - STA 103+02.00 LT
 - STA 103+02.00 RT

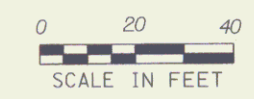
- 605.10 UNDERDRAIN PIPE (6")**
- 18 STA 104+94.17 LT - 103+49.59 LT
NEW 6" X 145' UNDERDRAIN PIPE
 - 19 STA 108+30.80 RT - 103+25.13 RT
NEW 6" X 506' UNDERDRAIN PIPE
W/ FLUSHING BASIN @ 108+30.80 RT
FLUSHING BASIN @ 105+80.00 RT
 - 20 STA 103+38.99 LT - 101+20.00 LT
NEW 6" X 219' UNDERDRAIN PIPE
 - 21 STA 103+20.00 RT - 101+20.00 RT
NEW 6" X 200' UNDERDRAIN PIPE
W/ FLUSHING BASIN @ STA 103+20.00 RT
- NEW STORMWATER TREATMENT PRACTICE**
- STA 100+50.00 RT - 102+60.00 RT
DISCONNECTION OF NON-ROOFTOP
RUNOFF CREDIT

- 605.20 UNDERDRAIN CARRIER PIPE (6")**
- 22 STA 103+49.59 LT - 103+46.21 LT
NEW 6" X 6' UNDERDRAIN CARRIER PIPE
 - 23 STA 103+25.13 RT - 103+03.50 RT
NEW 6" X 31' UNDERDRAIN CARRIER PIPE
 - 24 STA 103+43.64 LT - 103+38.99 LT
NEW 6" X 7' UNDERDRAIN CARRIER PIPE
 - 25 STA 101+20.00 LT - 101+20.00 RT
NEW 6" X 82' UNDERDRAIN CARRIER PIPE
W/ FLUSHING BASIN @ STA 101+20.00 LT
FLUSHING BASIN @ STA 101+20.00 RT
 - 26 STA 103+50.00 RT - 103+04.92 RT
NEW 6" X 45' UNDERDRAIN CARRIER PIPE

- EXISTING DRAINAGE**
- 1 STA 101+69.18 LT - 101+28.64 LT
EXISTING 18" CPEP PIPE & D1 = RETAIN
 - 2 STA 102+88.46 LT - 102+93.77 RT
EXISTING 24" CGMP PIPE &
HEADWALL = REMOVE
- SPECIAL PROVISION**
- STORMWATER DRYSWALE (5' WIDTH)
STA 104+30.00 RT - 103+50.00 RT
NEW STORMWATER TREATMENT DRY SWALE
NEW 6" X 81' UNDERDRAIN PIPE
W/ FLUSHING BASIN @ STA 104+30.00 RT
 - SPECIAL DITCH - GRASS CHANNEL
STA 100+50.00 LT - 102+60.00 LT
NEW STORMWATER TREATMENT
GRASS CHANNEL - 2' X 163'



EXISTING & PROPOSED WATERLINES
ARE FOR REFERENCE ONLY PLEASE
REFER TO WATERLINE SHEETS XX-XX



PROJECT NAME: MILTON	PLOT DATE: 29-JAN-2010
PROJECT NUMBER: STP 5800 (2)	DRAWN BY: D. LYMAN
FILE NAME: r92d289\ROW\r92d289drnl.dgn	CHECKED BY: J. DEVLIN
PROJECT LEADER: J. SCHULTZ	R.O.W. SHEET 10 OF 28
DESIGNED BY: D. LYMAN	
R.O.W. DRAINAGE LAYOUT SHEET 1	