

GPS CONTROL POINTS

HVCTRL #1

STANDARD DISC STAMPED

"DAUNAIS AZ MK 2004"

N = 781132.7590
E = 1480472.7970
ELEV. = 293.6000

GENERAL LOCATION, MILTON, VT. TO REACH FROM THE INTERSECTION OF VT ROUTE 104A AND US ROUTE 7 IN GEORGIA, GO SOUTH ALONG US ROUTE 7 FOR 3.0 MI TO THE INTERSECTION OF LAKE ROAD RIGHT. CONTINUE STRAIGHT AHEAD AND GO SOUTH ALONG US ROUTE 7 FOR 0.7 MI TO THE INTERSECTION OF HOWARD DRIVE RIGHT AND THE SITE OF THE MARK ON THE RIGHT. IT IS SET IN THE GRASSY TRIANGLE FORMED BY US ROUTE 7 AND HOWARD DRIVE OPPOSITE THE WEST END OF THE ARROWHEAD LAKE DAM. THE MARK IS SET ABOUT 5 CM BELOW GROUND SURFACE IN THE TOP OF A 30 CM DIAMETER CONCRETE MONUMENT. IT IS 14.7 M WEST SOUTHWEST OF AND ABOUT 1.0 M HIGHER THAN THE CENTERLINE OF US ROUTE 7, 9.3 M EAST SOUTHEAST OF THE CENTERLINE OF HOWARD DRIVE, 17.7 M SOUTHEAST OF POLE NO 11 01, 17.1 M NORTH OF THE NORTHWEST CORNER OF A STONE RETAINING WALL, AND 0.2 M EAST NORTHEAST OF A FIBERGLASS WITNESS POST

HVCTRL #2

STANDARD DISC STAMPED

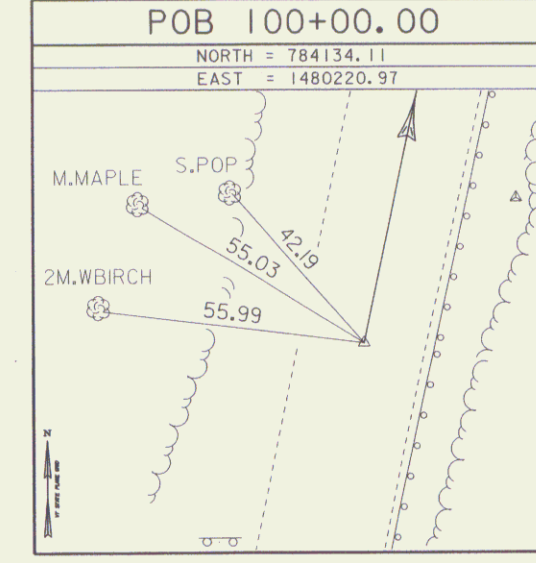
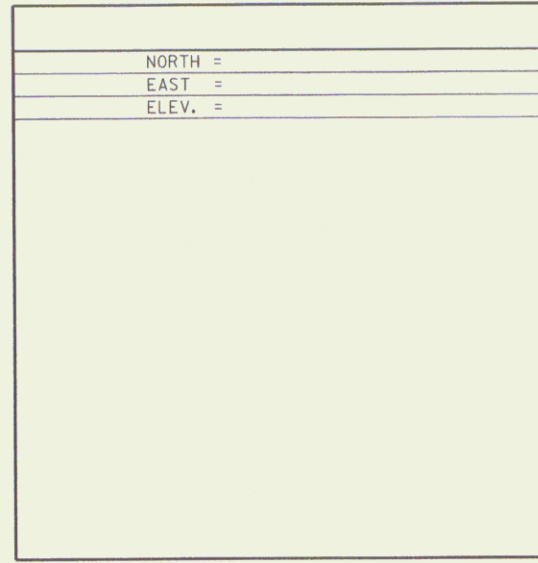
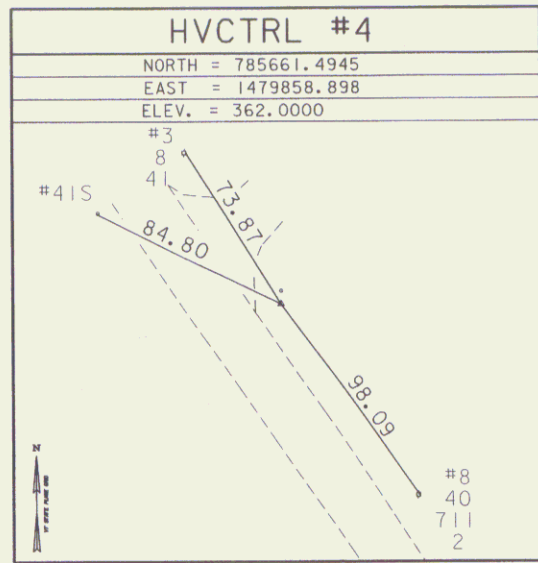
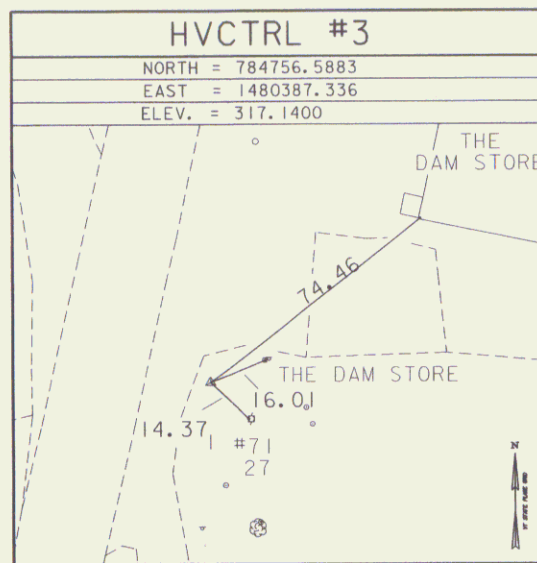
"DAUNAIS 2004"

** N = 784642.4690
E = 1480244.1920
ELEV. = 319.5500

GENERAL LOCATION, MILTON, VT. OWNERSHIP, NICK DAUNAIS, 82 US ROUTE 7 NORTH, MILTON, VT 05468. TO REACH FROM THE INTERSECTION OF VT ROUTE 104A AND US ROUTE 7 IN GEORGIA, GO SOUTH ALONG US ROUTE 7 FOR 3.0 MI TO THE INTERSECTION OF LAKE ROAD RIGHT. CONTINUE STRAIGHT AHEAD AND GO SOUTH ALONG US ROUTE 7 FOR ABOUT 50 M TO THE INTERSECTION OF A GRAVEL DRIVE RIGHT LEADING TO HOUSE NO 82 AND THE SITE OF THE MARK ON THE RIGHT IN A LAWN JUST NORTH OF THE DRIVEWAY. THE MARK IS SET ABOUT 12 CM BELOW GROUND SURFACE IN THE TOP OF A 30 CM DIAMETER CONCRETE MONUMENT POURED 1.3 M DEEP. IT IS 25.8 M NORTHWEST OF AND ABOUT 1.2 M HIGHER THAN THE CENTERLINE OF US ROUTE 7, 3.7 M NORTHEAST OF THE CENTERLINE OF THE GRAVEL DRIVE, 34.5 M EAST OF POLE NO 26-1/5B, 22.1 M SOUTHWEST OF THE SOUTH CORNER OF A SMALL GARAGE, AND 4.7 M SOUTH SOUTHWEST OF THE SOUTHWEST END OF A PICKET FENCE.

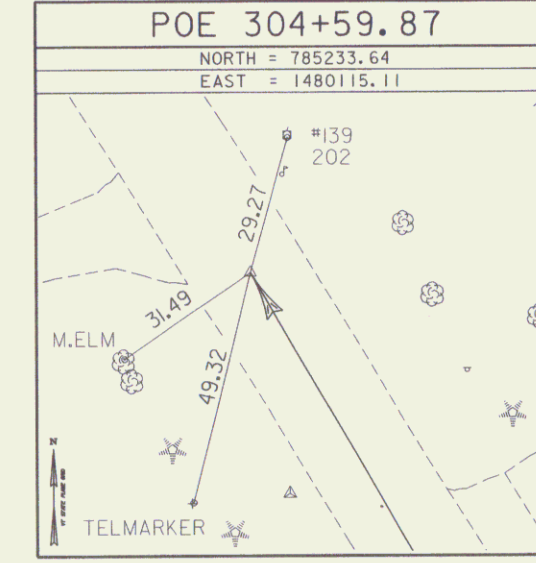
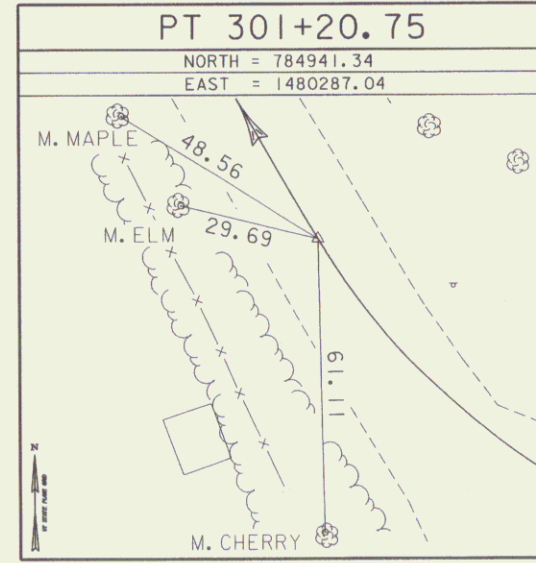
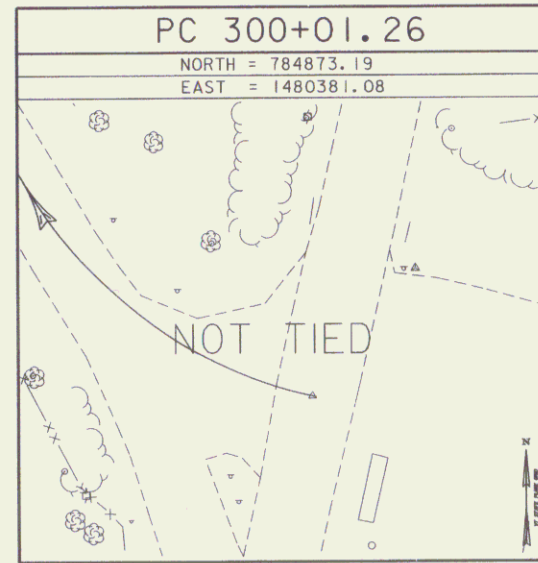
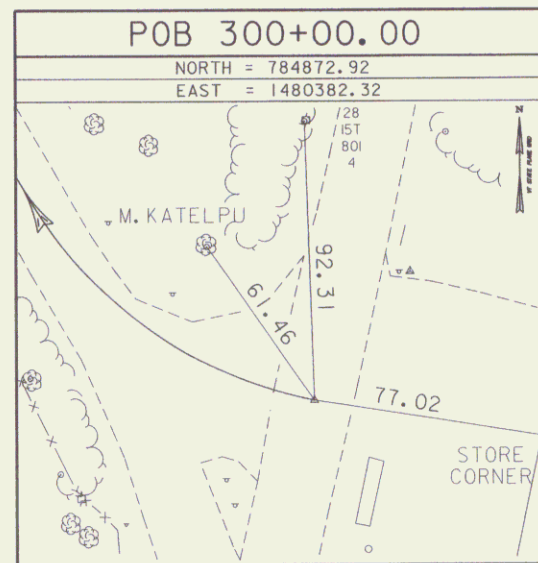
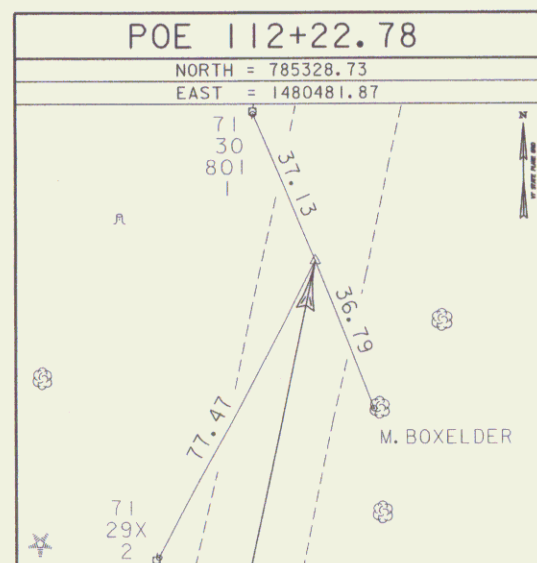
• DESCRIPTION PROVIDED BY VERMONT AGENCY OF TRANSPORTATION GEODETIC SURVEY UNIT

TRAVERSE TIES



• MAIN TRAVERSE COMPLETED: JUNE 14, 2004 BY L. ORVIS PC/ J. HULETT

ALIGNMENT TIES



DATUM	
VERTICAL	NAVD 88
HORIZONTAL	NAD-83(96)
ADJUSTMENT	UNADJUSTED

• ALIGNMENT STAKED 03-08-2007 by L. Orvis P.C. & G. Hitchcock

PROJECT NAME:	MILTON
PROJECT NUMBER:	STP 5800 (2)
FILE NAME:	r:\92d289\ROW\92d2891e.dgn
PROJECT LEADER:	J. SCHULTZ
DESIGNED BY:	D. LYMAN
PLOT DATE:	29-JAN-2010
DRAWN BY:	J.H. & R.B.
CHECKED BY:	P. HODGE
R.O.W. SHEET	9 OF 28