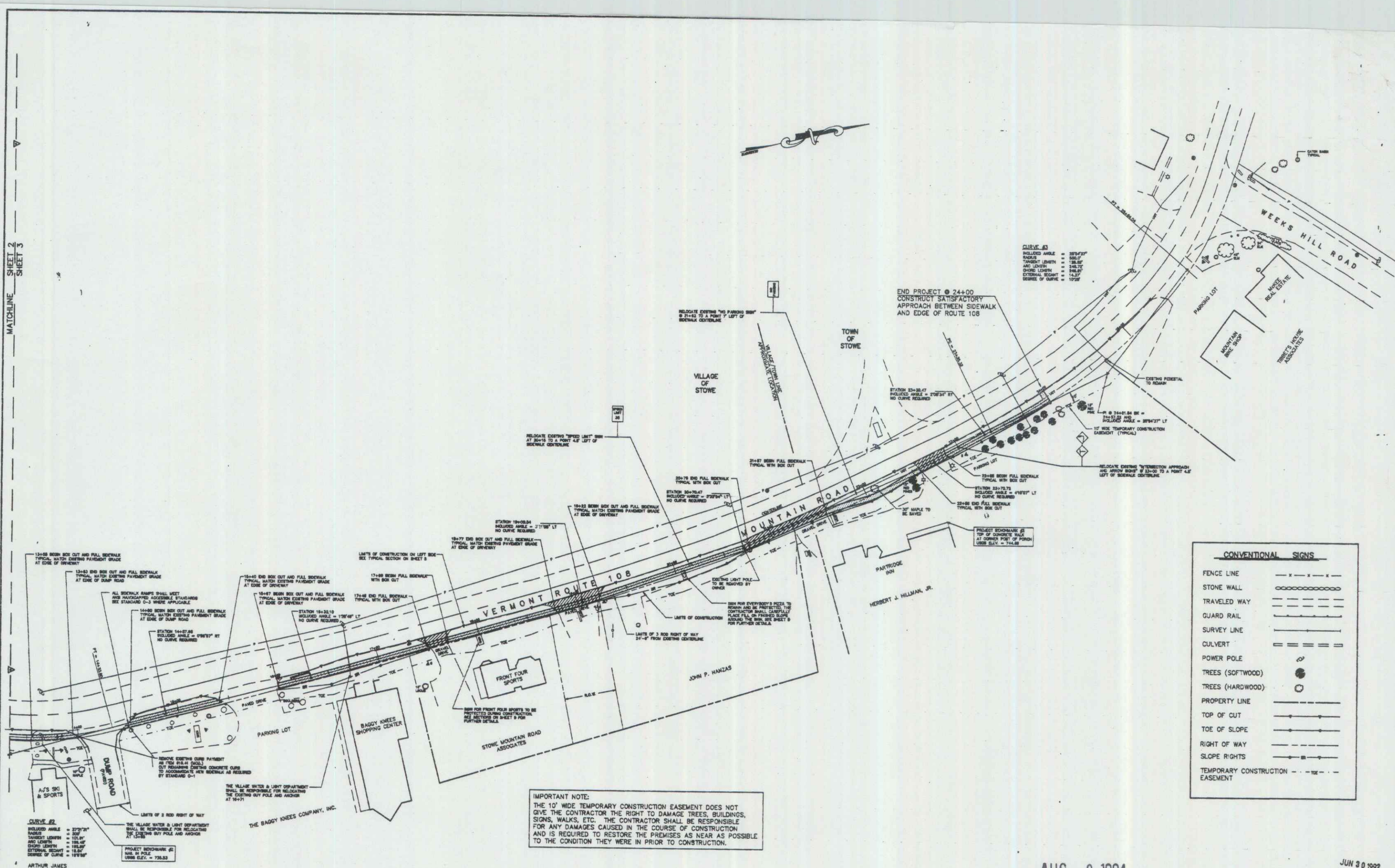


MATCHLINE SHEET 2 SHEET 3



**CURVE #3**  
 BEHIND ANGLE = 95°27'17"  
 RADIAL LENGTH = 100.00'  
 CHORD LENGTH = 18.85'  
 CHORD BEARING = 185°07'  
 POINT OF CURVE = 13+27.17'

END PROJECT @ 24+00  
 CONSTRUCT SATISFACTORY  
 APPROACH BETWEEN SIDEWALK  
 AND EDGE OF ROUTE 108

CONVENTIONAL SIGNS	
FENCE LINE	— — — — —
STONE WALL	— — — — —
TRAVELED WAY	— — — — —
GUARD RAIL	— — — — —
SURVEY LINE	— — — — —
CULVERT	— — — — —
POWER POLE	— — — — —
TREES (SOFTWOOD)	○
TREES (HARDWOOD)	●
PROPERTY LINE	— — — — —
TOP OF CUT	— — — — —
TOE OF SLOPE	— — — — —
RIGHT OF WAY	— — — — —
SLOPE RIGHTS	— — — — —
TEMPORARY CONSTRUCTION EASEMENT	— — — — —

**IMPORTANT NOTE:**  
 THE 10' WIDE TEMPORARY CONSTRUCTION EASEMENT DOES NOT GIVE THE CONTRACTOR THE RIGHT TO DAMAGE TREES, BUILDINGS, SIGNS, WALKS, ETC. THE CONTRACTOR SHALL BE RESPONSIBLE FOR ANY DAMAGES CAUSED IN THE COURSE OF CONSTRUCTION AND IS REQUIRED TO RESTORE THE PREMISES AS NEAR AS POSSIBLE TO THE CONDITION THEY WERE IN PRIOR TO CONSTRUCTION.

**CURVE #2**  
 BEHIND ANGLE = 97°27'17"  
 RADIAL LENGTH = 100.00'  
 CHORD LENGTH = 18.85'  
 CHORD BEARING = 185°07'  
 POINT OF CURVE = 13+27.17'

**SITE PLAN**  
 GRAPHIC SCALE



AUG 9 1994

JUN 30 1992

PROJECT  
 BW-RS-BKKE (29)



"SITE PLAN 13+00 TO 25+50"  
 STOWE MOUNTAIN ROAD WALK  
**CHARLES GRENIER**  
 CONSULTING ENGINEER, P.C.  
 BOX 445, WATERBURY, VERMONT  
 244-6413

DATE #8-20-94  
 DRN BY T.J.M.  
 SCALE 1"=40'  
 SHT 25 OF 29

19