

NOTE:  
DITCH ELEVATIONS AS SHOWN ON CROSS SECTIONS MAY REQUIRE ADJUSTMENT TO MEET FIELD CONDITIONS. POSITIVE DRAINAGE SHALL BE MAINTAINED AS SHOWN ON PLANS.

**PLAN**  
SURVEYED BY: \_\_\_\_\_ DATE: \_\_\_\_\_  
DRAWN BY: \_\_\_\_\_ DATE: \_\_\_\_\_  
TRACED BY: \_\_\_\_\_ DATE: \_\_\_\_\_  
SCALE: 1"=50' HORIZ.  
1"=10' VERT.  
PROJ. BRISTOL F021-1(15)  
SHEET 3 OF 5

EXCAVATION OF SURFACES & PAVEMENT  
34+85.2 - 36+20.2 RT.  
42+10.2 RT - 44+50.2 LT.

REMOVAL & DISPOSAL OF GUARD RAIL  
36+93.4 - 38+18.4 RT.  
44+10.4 - 44+31.4 LT.  
44+24.4 - 44+60.4 LT.

DATUM  
VERTICAL N.G.V.D. 1929  
HORIZONTAL N.A.D. 1927

M CURVE NO. 2  
Δ = 57°59'19" LT  
D = 57°59'19" LT  
R = 1,459.92'  
T = 635.04'  
L = 1,597.77'  
E = 164.20'  
BANK 0.071'/FT

REMOVED STRUCTURE  
42+47.94 RT (TH NO 25)  
44+50.4 LT

CONSTRUCT APPROACH  
42+47.94 RT (TH NO 25)  
44+50.4 LT FX RTE 116)

TH # 25 CURVE NO. 1  
Δ = 40°56'03"  
D = 17°54'30"  
R = 399.4'  
T = 194.1'  
L = 228.56'  
E = 21.56'  
BANK 0.027'/FT

GUARD RAIL, PLANK W/ WOOD POSTS  
45+05.4 - 45+45.4 LT (E. SIDE OF RIVER)  
45+70.4 - 46+20.4 (W. SIDE OF RIVER)

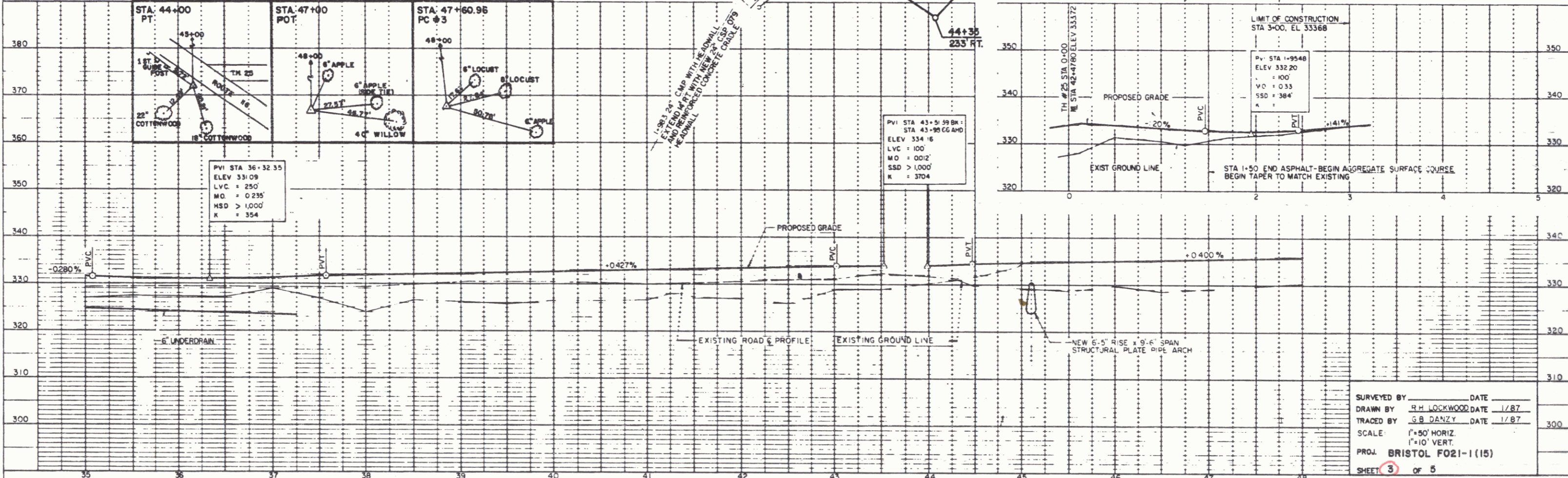
STEEL BEAM GUARD RAIL  
45+00 - 46+00 LT  
44+25 - 45+87.5 RT

BREAKAWAY CABLE TERMINAL  
44+75 - 45+00 LT  
46+00 - 46+25 LT  
43+39.94 - 44+12.5 RT  
45+87.5 - 46+12.5 RT

CONSTRUCT DRIVEWAYS  
0+91 LT (TH # 25) GRAVEL 16' WIDE

M CURVE NO. 3  
Δ = 21°50'26" RT  
D = 3°00'00" RT  
R = 1,909.86'  
T = 368.48'  
L = 728.02'  
E = 35.22'  
BANK 0.053'/FT

**PROFILE**  
SURVEYED BY: \_\_\_\_\_ DATE: \_\_\_\_\_  
DRAWN BY: \_\_\_\_\_ DATE: \_\_\_\_\_  
TRACED BY: \_\_\_\_\_ DATE: \_\_\_\_\_  
SCALE: 1"=50' HORIZ.  
1"=10' VERT.  
PROJ. BRISTOL F021-1(15)  
SHEET 3 OF 5



PVI STA 36+32.55  
ELEV 335.09  
LVC = 250'  
M.O. = 0.235  
MSD > 1,000'  
K = 354

PVI STA 43+51.59 BK  
STA 43+95.66 AH  
ELEV 334.16  
LVC = 100'  
M.O. = 0.012  
SSD > 1,000'  
K = 3704

LIMIT OF CONSTRUCTION  
STA 3+00, EL. 333.68

PVI STA 1+9548  
ELEV 332.20  
LVC = 100'  
M.O. = 0.33  
SSD = 384'

SURVEYED BY: \_\_\_\_\_ DATE: \_\_\_\_\_  
DRAWN BY: R.H. LOCKWOOD DATE 1/87  
TRACED BY: G.B. DANZY DATE 1/87  
SCALE: 1"=50' HORIZ.  
1"=10' VERT.  
PROJ. BRISTOL F021-1(15)  
SHEET 3 OF 5