

STATE OF VERMONT  
AGENCY OF TRANSPORTATION



PROPOSED IMPROVEMENT  
**TOWN OF COLCHESTER**

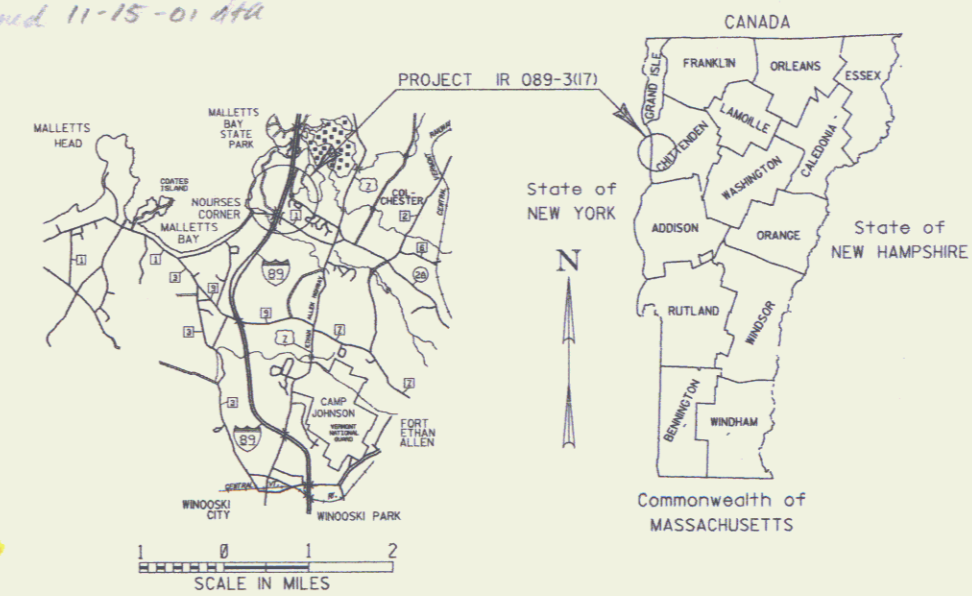
COUNTY OF CHITTENDEN

**INTERSTATE 89** (INTERSTATE PRINCIPAL ARTERIAL)

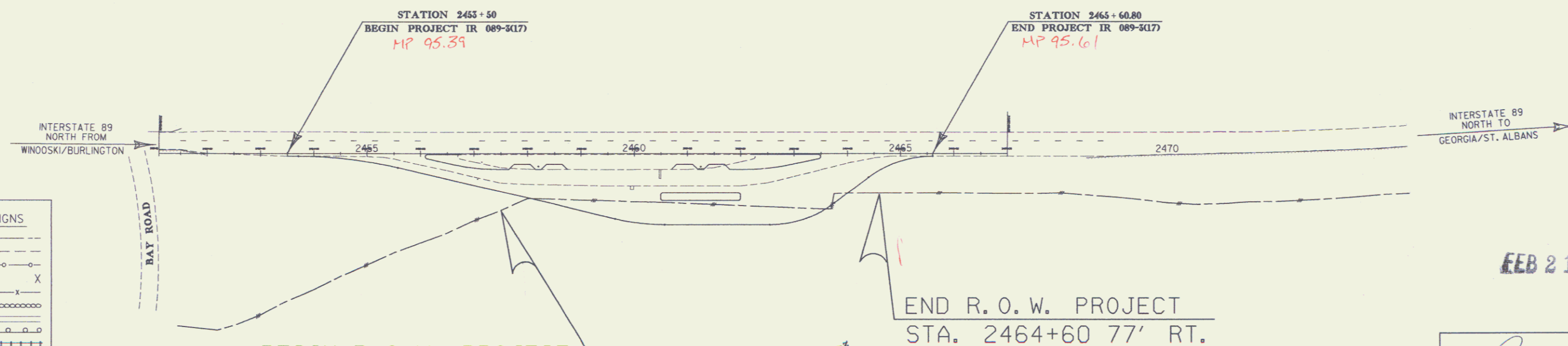
BEGINNING AT A POINT 4.49 MILES NORTH OF THE WINOOSKI/COLCHESTER TOWN LINE AND EXTENDING NORTHERLY FOR 0.229 MILES

LENGTH OF PROJECT = 1210.80 FEET = 0.229 MILE  
LENGTH OF R.O.W. PROJECT = 710 FEET = 0.134 MILES  
WORK TO BE DONE UNDER THIS PROJECT INCLUDES EXPANSION OF THE EXISTING NORTHBOUND WEIGH STATION REQUIRING ADDITIONAL SUBBASE, PAVEMENT, CURBING AND DRAINAGE IN ADDITION TO A NEW OVERLAY OF PAVEMENT ON THE EXISTING FACILITY INCLUDING CENTRALIZED CURBING, POWER, AND LIGHTING

Revised 11-15-01 AFA



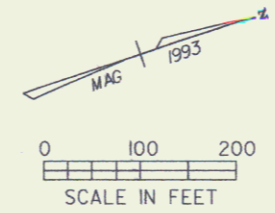
R.O.W. PLANS



CONVENTIONAL SIGNS

COUNTY LINE	---
TOWN LINE	---
LIMITS OF ACCESS	---o---o---
POINT OF ACCESS	X
FENCE LINE	---x---x---
STONE WALL	---o---o---
TRAVELED WAY	---o---o---
GUARD RAIL	---o---o---
RAILROAD	---+---+---
SURVEY LINE	---+---+---
CULVERT	---+---+---
POWER POLE	⊕
TELEPHONE POLE	⊕
TREES	⊕
CONTROL OF ACCESS	///
PROPERTY LINE	---
R.O.W. TAKING LINE	---SR---
SLOPE RIGHTS	---△---
TOP OF CUT	---△---
TOE OF SLOPE	---o---

DATUM  
VERTICAL NAVD 1988  
HORIZONTAL N/A



FEB 21 2001

THESE PLANS ARE SUBJECT TO SUCH ENGINEERING CHANGES AS MAY BE REQUIRED BY THE FEDERAL HIGHWAY ADMINISTRATION OR THE CHIEF ENGINEER. CONSTRUCTION IS TO BE CARRIED ON IN ACCORDANCE WITH THESE PLANS AND THE STANDARD SPECIFICATIONS FOR CONSTRUCTION DATED 1990, AS APPROVED BY THE FEDERAL HIGHWAY ADMINISTRATION ON MARCH 15, 1990 FOR USE ON THIS PROJECT, INCLUDING ALL SUBSEQUENT REVISIONS AND SUCH REVISED SPECIFICATIONS AND SPECIAL PROVISIONS AS ARE INCORPORATED IN THESE PLANS.

APPROVED *[Signature]* DATE 2/20/95  
Acting Director of Engineering  
Pin # 914220

APPROVED *[Signature]* DATE 8/23/95  
Chief of Right of Way

**COLCHESTER**  
**IR 089-3(17)**  
R.O.W. SHEET (1) OF 6 SHEETS



**STATE OF VERMONT  
AGENCY OF TRANSPORTATION  
RIGHT OF WAY PLANS  
DETAIL SHEET**

**TABLE OF PROJECT PROPERTY ACQUISITION**

PARCEL NO.	GRANTOR	SHEET NO.	BEGINNING STATION	ENDING STATION	TAKING	REM.	RIGHTS	TITLE TAKEN	DATE	TOWN OR CITY RECORDED	BK.	PG.	REMARKS	REVISION NO.	SHEET	DESCRIPTION OF REVISION	DATE	MADE BY	APPROVED BY
1	THOMAS, ROBERT L. & VERNA E.	5, 6	2457+50 RT. 2460+50 RT. 2462+00 RT.	2463+80 RT.	0.91A:		DRAINAGE (P) DRAINAGE (P)	WD	04-16-99	COLCHESTER	310	508-509				REPRODUCIBLES TO DESIGN 05-25-98			
2	MORIN, MARILYN D.	6	2463+79 RT.	2464+60 RT.	0.06A:			WD	06-02-98	COLCHESTER	291	9-10	2452 S.F. :						

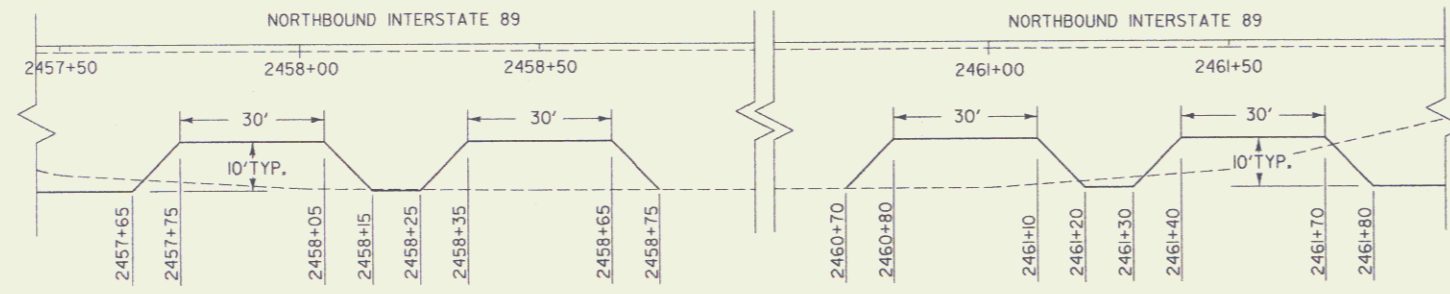
FEB 21 2001

<p>0893017 200 91A220 J.D.P.</p> <p>ACCI.prop /prop/91a220/ra220d.dgn DATE PLOTTED 7-JUN-1999 r0220d.plt</p>	<p>DR. (P)- DRAINAGE RIGHT DIT. (P)- DITCHING RIGHT CH. (P)- CHANNEL RT. DRIVE (T)- DRIVE RIGHT CUL. (P)- CULVERT RIGHT [W]- WATER SOURCES</p>	<p>PRESENT R.O.W. TAKING WITHOUT ACCESS TAKING WITHOUT ACCESS ALONG PROPERTY LINE TAKING WITH ACCESS (P) PERMANENT EASEMENT (T) TEMPORARY EASEMENT</p>	<p>LEGEND</p> <p>--- C&amp;T (P) --- CLEARING &amp; TRIMMING          ... C&amp;T (P) ... CLEAR ZONE          --- CONST. EASEMENT --- CONSTRUCTION EASEMENT          --- SR --- SLOPE RIGHTS          --- P --- PROPERTY LINE          --- L --- TOP OF CUT          --- O --- TOE OF SLOPE</p>	<p>APPROVED: LAWRENCE BLISS, L.S., DATE: 08-24-95 AGENT D, PLANS &amp; TITLES</p>	<p>R. O. W. PLANS</p> <p>COLCHESTER IR 089-3(17) SHEET 3 OF 6</p>
--------------------------------------------------------------------------------------------------------------------------	--------------------------------------------------------------------------------------------------------------------------------------------------------------------	----------------------------------------------------------------------------------------------------------------------------------------------------------------------------	-------------------------------------------------------------------------------------------------------------------------------------------------------------------------------------------------------------------------------------------------------------------------------------------------------------------------	---------------------------------------------------------------------------------------	---------------------------------------------------------------------------

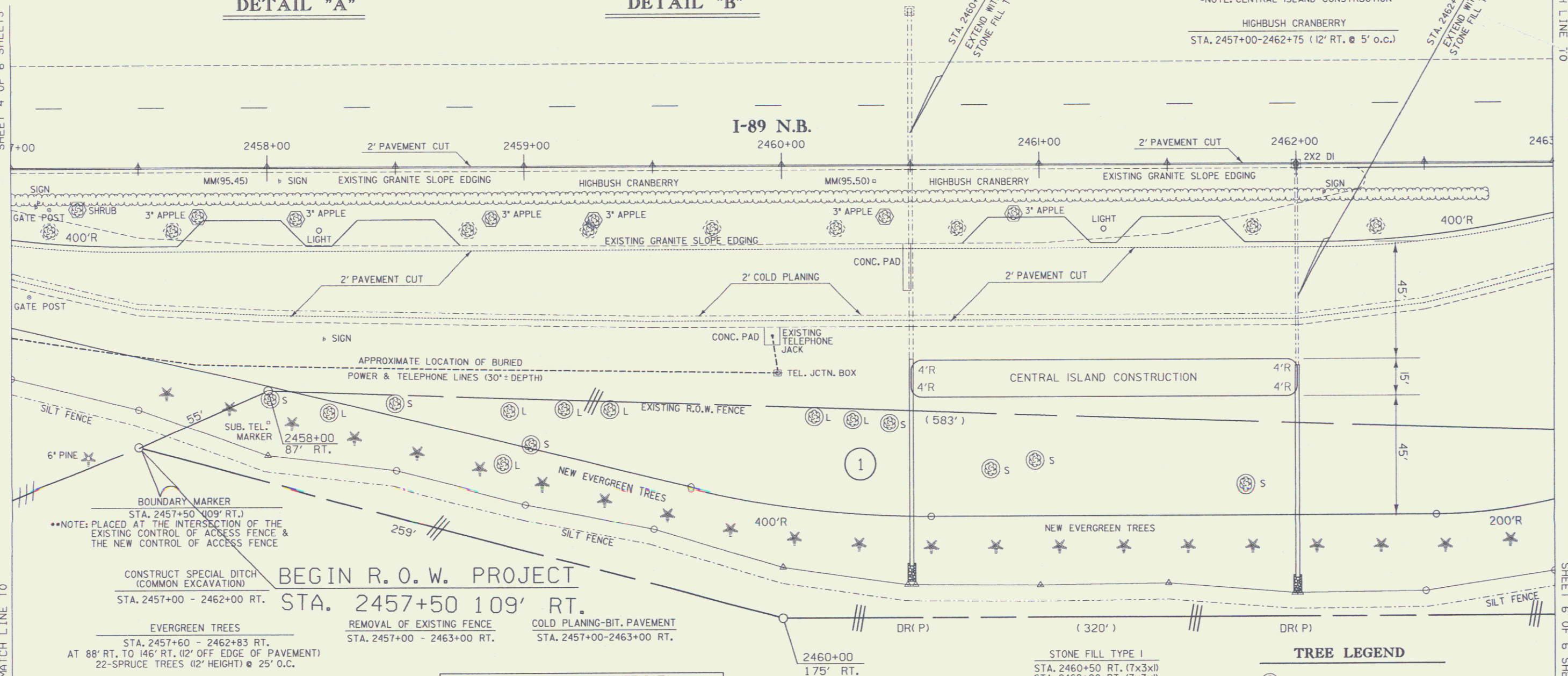


SHEET 4 OF 6 SHEETS

MATCH LINE TO



- TRANSPLANTING TREES (APPLE)**  
 STA. 2457+26 RT. TO 2457+16 RT. (24.5' RT.)  
 STA. 2457+73 RT. TO 2457+63 RT. (24.6' RT.)  
 STA. 2458+11 RT. TO 2458+78 RT. (24.5' RT.)  
 STA. 2458+87 RT. TO 2459+25 RT. (24.5' RT.)  
 STA. 2459+27 RT. TO 2459+73 RT. (24.5' RT.)  
 STA. 2460+40 RT. TO 2460+21 RT. (24.5' RT.)  
 STA. 2460+90 RT. TO 2460+68 RT. (24.5' RT.)
- EXCAVATION OF SURFACES AND PAVEMENTS**  
 STA. 2457+00 - 2463+00 RT.  
 \*NOTE: TO INCLUDE A PAVEMENT SAW CUT 2 FT OUTSIDE THE NEW GRANITE SLOPE EDGING / EXISTING SLOPE EDGING & 2 FT INSIDE THE OUTER EDGE OF PAVEMENT
- REMOVING AND RESETTING CURB**  
 STA. 2457+00 - 2462+27  
 \*NOTE: ALL EXISTING GRANITE SLOPE EDGING IS TO BE REMOVED & RESET
- GRANITE SLOPE EDGING**  
 STA. 2462+27 - 2463+00  
 \*NOTE: DONE IN CONJUNCTION WITH REMOVING AND RESETTING CURB
- HIGHBUSH CRANBERRY**  
 STA. 2460+50 - 2462+00  
 \*NOTE: CENTRAL ISLAND CONSTRUCTION
- STA. 2457+00-2462+75 (12' RT. @ 5' o.c.)**

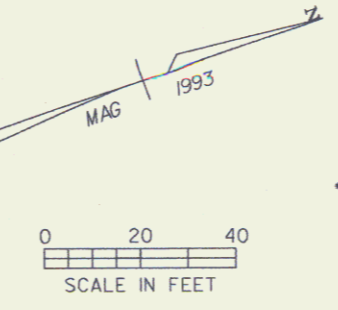


**BEGIN R.O.W. PROJECT**  
 STA. 2457+00 - 2462+00 RT.  
 STA. 2457+50 109' RT.  
 EVERGREEN TREES  
 STA. 2457+60 - 2462+83 RT.  
 AT 88' RT. TO 146' RT. (2' OFF EDGE OF PAVEMENT)  
 22-SPRUCE TREES (12' HEIGHT) @ 25' O.C.

**REMOVAL OF EXISTING FENCE**  
 STA. 2457+00 - 2463+00 RT.

**COLD PLANING-BIT. PAVEMENT**  
 STA. 2457+00-2463+00 RT.

STATION OFFSET DATA FOR ISLAND SEPARATING I-89 & WEIGH STATION				STATION OFFSET DATA FOR OUTSIDE EDGE OF PAVEMENT			
STATION	OFFSET	STATION	OFFSET	STATION	OFFSET	STATION	OFFSET
2457+00	1.50' / 27.50' RT.	2460+25	1.50' / 30.50' RT.	2457+00	61.18' RT.	2460+25	134.18' RT.
2457+25	1.50' / 29.84' RT.	2460+50	1.50' / 30.50' RT.	2457+25	61.17' RT.	2460+50	135.43' RT.
2457+50	1.50' / 30.50' RT.	2460+75	SEE DETAIL 'B'	2457+50	73.16' RT. (PT) 2460+57.52	2460+75	135.50' RT.
2457+75	SEE DETAIL 'A'	2461+00	SEE DETAIL 'B'	2457+75	79.14' RT.	2460+75	135.50' RT.
2458+00	SEE DETAIL 'A'	2461+25	SEE DETAIL 'B'	2458+00	85.13' RT.	2461+00	135.50' RT.
2458+25	SEE DETAIL 'A'	2461+50	SEE DETAIL 'B'	2458+25	91.12' RT.	2461+25	135.50' RT.
2458+50	SEE DETAIL 'A'	2461+75	SEE DETAIL 'B'	2458+50	97.11' RT.	2461+50	135.50' RT.
2458+75	SEE DETAIL 'A'	2462+00	SEE DETAIL 'B'	2458+75	103.10' RT.	2461+75	135.50' RT.
2459+00	1.50' / 30.50' RT.	2462+25	1.50' / 30.09' RT.	2459+00	109.09' RT.	2462+00	135.50' RT.
2459+25	1.50' / 30.50' RT.	2462+50	1.50' / 28.17' RT.	2459+25	115.07' RT.	2462+25	135.50' RT.
2459+50	1.50' / 30.50' RT.	2462+75	1.50' / 24.66' RT.	2459+50	121.06' RT.	2462+50	135.50' RT.
2459+75	1.50' / 30.50' RT.	2463+00	1.50' / 19.57' RT.	(PC) 2459+64.35	124.50' RT.	(PC) 2462+54.34	135.50' RT.
2460+00	1.50' / 30.50' RT.			2459+75	126.90' RT.	2462+75	134.43' RT.
				2460+00	131.34' RT.	2463+00	126.42' RT.



- STONE FILL TYPE 1**  
 STA. 2460+50 RT. (7x3x1)  
 STA. 2462+00 RT. (7x3x1)
- GEOTEXTILE FABRIC FOR SILT FENCE**  
 STA. 2457+00 - 2463+00 RT.
- REMOVING TREES (LARGE & SMALL)**  
 STA. 2458+00 - 2461+80 (90' TO 125' RT.)  
 7-LARGE TREES / 7-SMALL TREES
- \*NOTE: APPROXIMATE LOCATIONS - TREES DEFINED ARE THOSE LOCATED OUTSIDE THE EXISTING R.O.W. FENCE NOT INCLUDED IN THE SURVEY
- TREE LEGEND**
- ⊙ S REMOVING SMALL TREES
  - ⊙ L REMOVING LARGE TREES
  - ✱ NEW EVERGREEN TREES
  - ⊙ TRANSPLANTING TREES FROM
  - ⊙ TRANSPLANTING TREES TO

SURVEYED BY R. MOREAU DATE 1/93  
 DRAWN BY K. UPMAL DATE 1/94  
 SQUAD LEADER S. MENARD  
 DESIGN FILE NO. DGN&SPECIFICATION\*\*\*\*\*  
 IPARM FILE /pr/09/94220/r-a2202r PLOTTED \*\*\*\*\*  
 DATE  
 COLCHESTER IR 089-3(17)  
 R. O. W. SHEET 4 OF 6 SHEETS

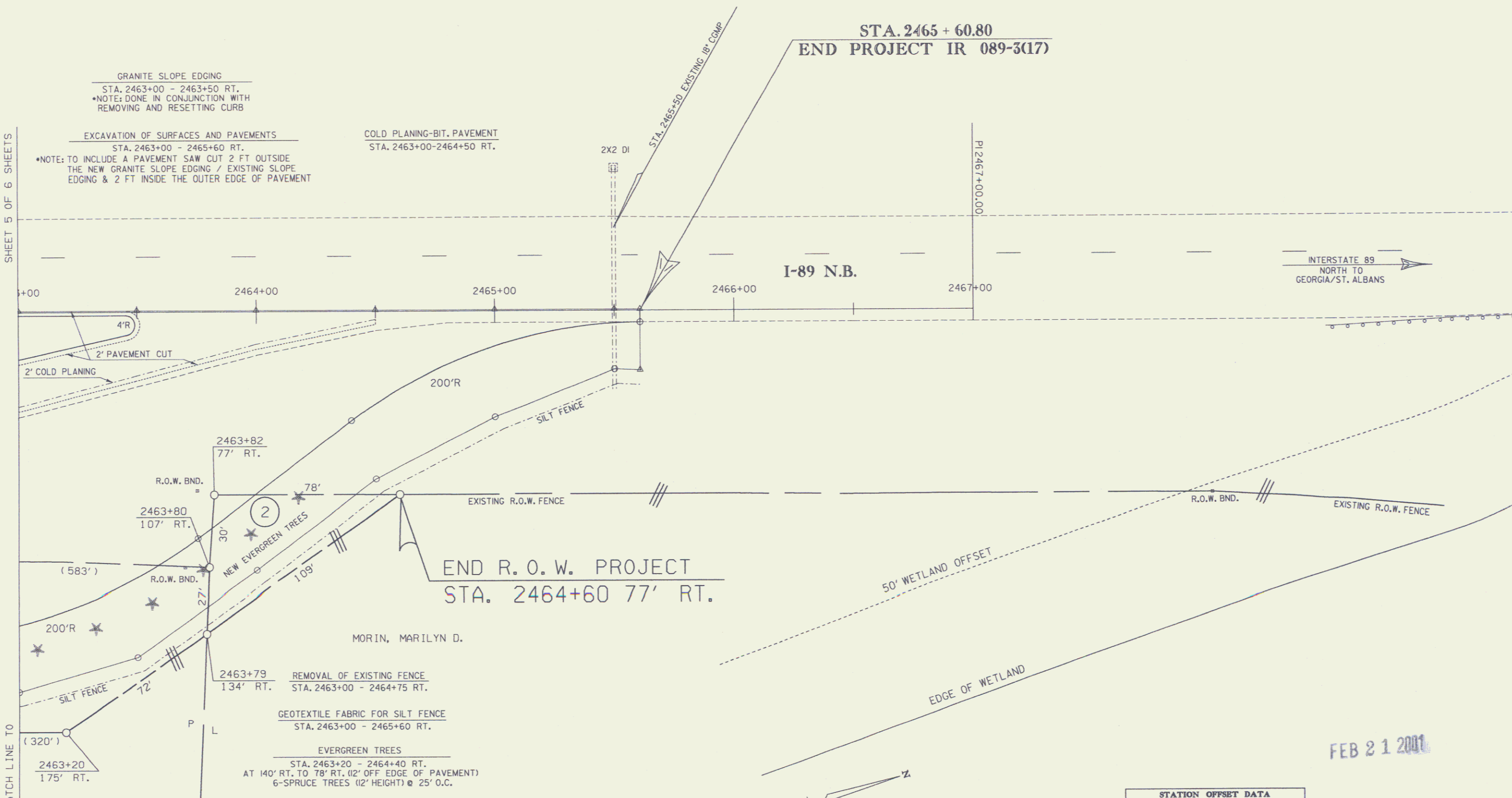
MATCH LINE TO

SHEET 6 OF 6 SHEETS

FEB 21 2001

THOMAS, ROBERT L & VERNA E.

4

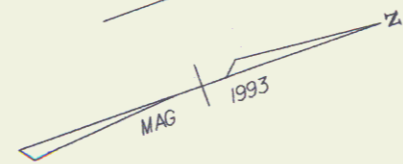


SHEET 5 OF 6 SHEETS

MATCH LINE TO

**TREE LEGEND**  
\* NEW EVERGREEN TREES

DATUM  
VERTICAL \_\_\_\_\_  
HORIZONTAL \_\_\_\_\_



**STATION OFFSET DATA FOR ISLAND SEPARATING I-89 & WEIGH STATION**

STATION	OFFSET
2463+00	1.50' / 19.57' RT.
2463+25	1.50' / 14.06' RT.
2463+50	5.50' RT.

**STATION OFFSET DATA FOR OUTSIDE EDGE OF PAVEMENT**

STATION	OFFSET
2463+00	126.42' RT.
2463+25	122.60' RT.
2463+50	111.14' RT.
2463+75	95.00' RT.
(PT) 2463+75.35	94.73' RT.
2464+00	76.00' RT.
2464+25	57.00' RT.
(PC) 2464+39.78	45.77' RT.
2464+50	38.49' RT.
2464+75	24.34' RT.
2465+00	14.46' RT.
2465+25	8.23' RT.
2465+50	5.31' RT.
(PT) 2465+60.80	5.00' RT.

FEB 21 2001

SURVEYED BY R. MOREAU DATE 1/93  
DRAWN BY K. UPMAL DATE 1/94  
SQUAD LEADER S. MENARD  
DESIGN FILE NO. DGN#SPECIFICATION#\*\*\*\*\*  
IPARM FILE #Prop/9/c220/r a2203r PLOTTED \*\*\*\*\*  
COLCHESTER  
IR 089-3(17)  
R. O. W. SHEET 6 OF 6 SHEETS