

Original Drawing - Ink on polymer meeting the requirements of 27 V.S.A. § 1403

GPS CONTROL POINTS

HVCTRL # 1

STANDARD DISK STAMPED
 N 24
 N = 703025.8281
 E = 1505661.4110
 ELEV. = 304.970

GENERAL LOCATION, RICHMOND, VT., ABOUT 8.5 MI (13.7 KM) EAST OF BURLINGTON, ABOUT 24 MI (38.6 KM) WEST-NORTHWEST OF MONTPELIER, AND ABOUT 26 MI (41.8 KM) SOUTH OF ST ALBANS. TO REACH FROM THE INTERSECTION OF VT ROUTE 117 AND U.S. ROUTE 2 IN RICHMOND GO NORTH ALONG VT ROUTE 117 FOR 0.3 MI (0.5 KM) TO THE MARK ON THE LEFT, WEST OF THE CENTRAL VERMONT RAILROAD TRACKS AND ABOUT OPPOSITE THE NORTH END OF THE LUCKY SPOT VARIETY STORE. THE MARK IS 9.5 M (31.2 FT) WEST OF AND ABOUT 0.5 M (1.6 FT) LOWER THAN THE WEST RAIL OF THE CVRR, 25.1 M (82.3 FT) WEST OF THE CENTERLINE OF VT ROUTE 117, 25.0 M (82.0 FT) NORTH OF THE CENTERLINE OF A FARM DRIVE, 13.8 M (45.3 FT) WEST-NORTHWEST OF RAILROAD MILEPOST W101, AND 0.2 M (0.7 FT) EAST OF A FIBERGLASS WITNESS POST IN THE RAILROAD RIGHT-OF-WAY FENCE. IT IS SET IN THE TOP OF A 15 CM SQUARE CONCRETE MONUMENT WHICH PROJECTS 7 CM ABOVE GROUND SURFACE.

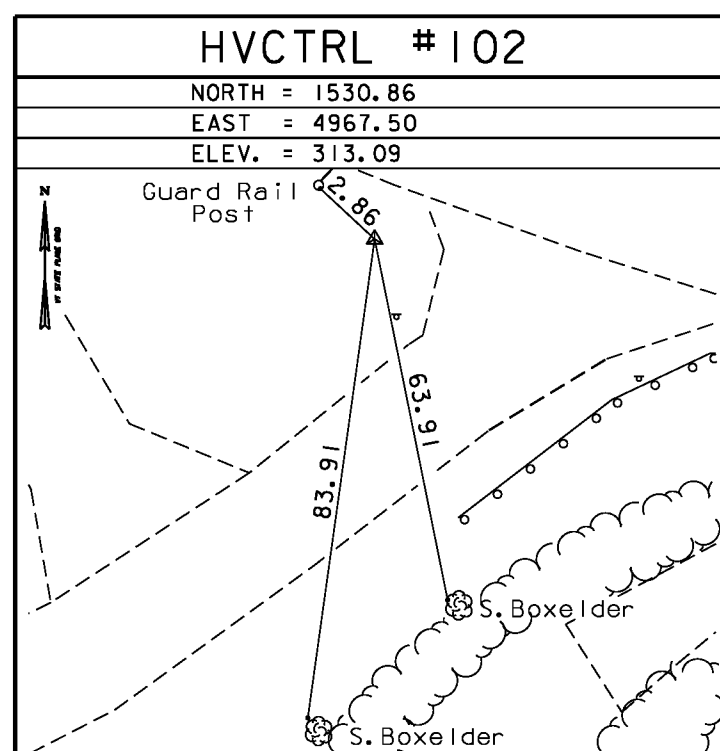
*TO ALLOW THE STATE PLANE COORDINATES TO FIT THE AGENCY DESIGN PLANE, SUBTRACT 700,000 FROM THE NORTHING AND SUBTRACT 1,500,000 FROM THE EASTING.
 * DESCRIPTION PROVIDED BY VERMONT AGENCY OF TRANSPORTATION GEODETIC SURVEY UNIT

HVCTRL # 2

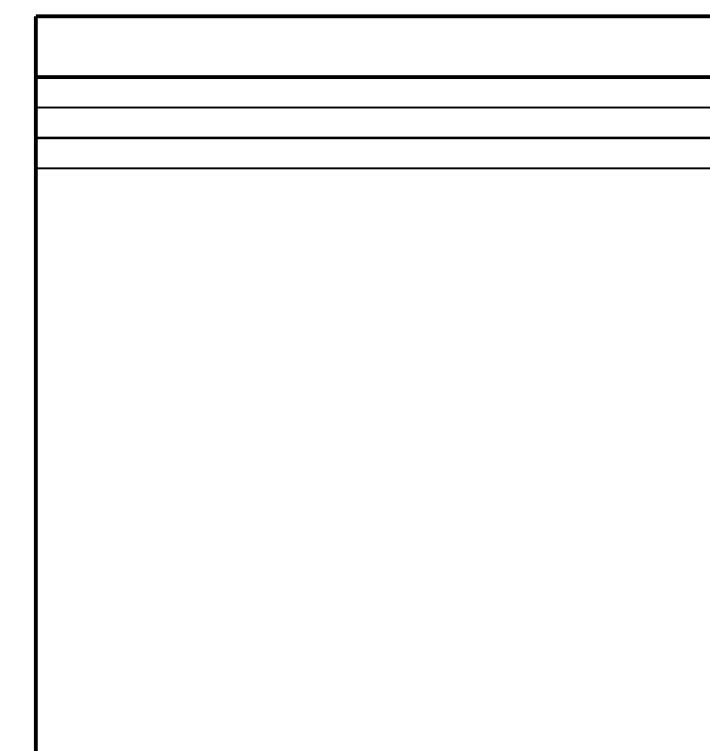
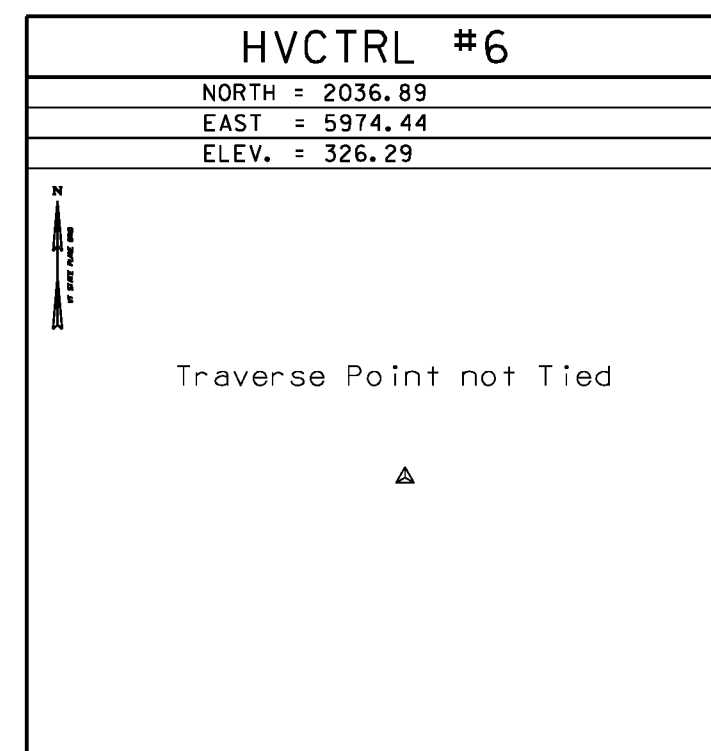
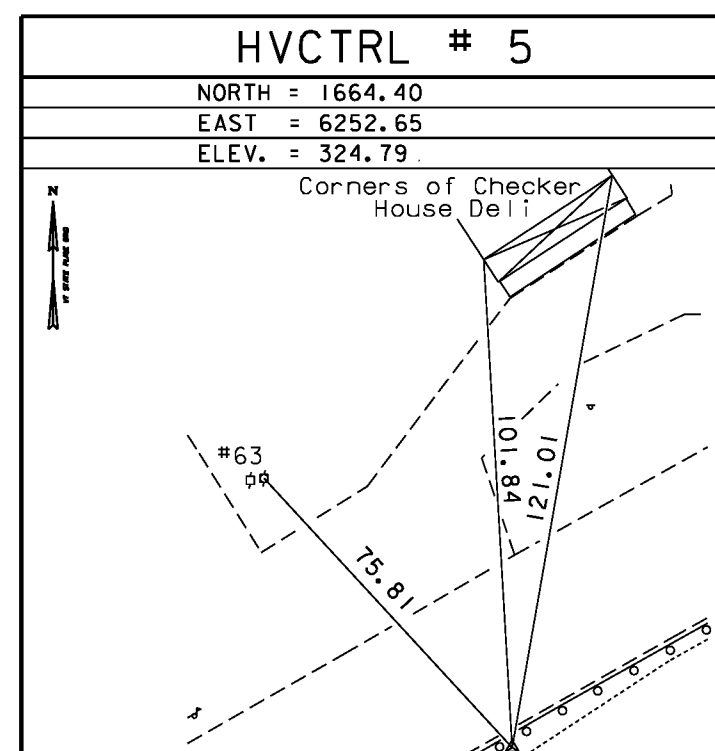
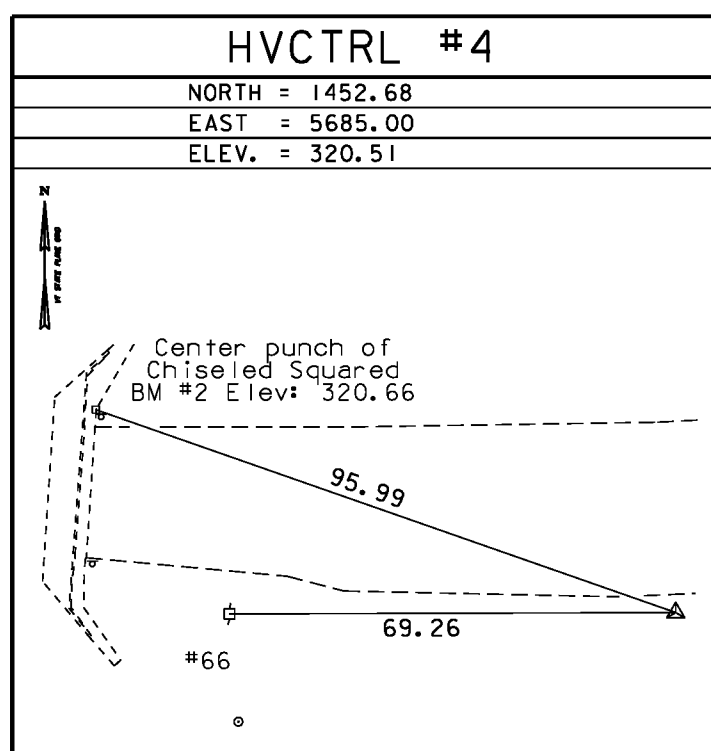
STANDARD DISK STAMPED
 Accident
 N = 701724.6168
 E = 1505713.862
 ELEV. = 321.077

GENERAL LOCATION, RICHMOND, VT. OWNERSHIP, SOUTHWORTH MILTON INC. RICHAMOND VT 05477. TO REACH FROM THE INTERSECTION OF US ROUTE 2 AND VT RTE 117 GO WEST ALONG US ROUTE 2 FOR 0.15 MI (0.24 KM) TO THE INTERSECTION OF CAT LANE RIGHT, LEADING TO THE SOUTHWORTH MILTON CATERPILLAR DEALERSHIP. TURN RIGHT AND GO NORTH ALONG CAT LANE FOR ABOUT 80 M (262.5 FT) TO THE SITE OF MARK ON THE LEFT IN A LAWN. THE MARK IS SET FLUSH WITH GROUND SURFACE IN THE TOP OF A 1.7 M (5.6 FT) X 0.4 M (1.3 FT) ROCK OUTCROP. IT IS 16.5 M (54.1 FT) WEST OF AND ABOUT 2 M (6.6 FT) HIGHER THAN THE CENTERLINE OF CAT LANE, 13.0 M (42.7 FT) NORTHWEST OF A LUMEN (STREETLIGHT), 64.2 M (210.6 FT) NORTH NORTHWEST OF POLE NO 65 AND 65.4 M (214.6 FT) NORTH OF THE NORTH END OF THE SOUTHWORTH MILTON INC/ CAT SIGN.

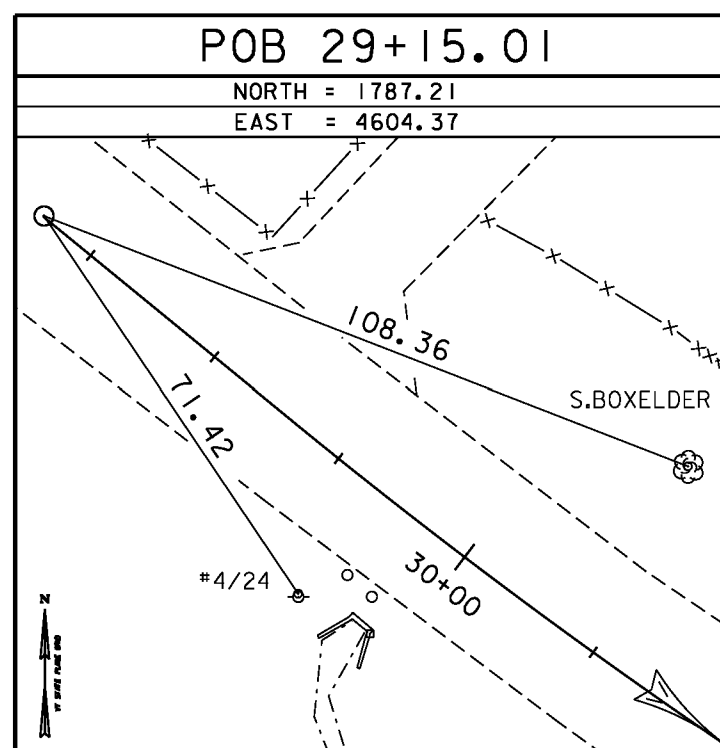
TRAVERSE TIES



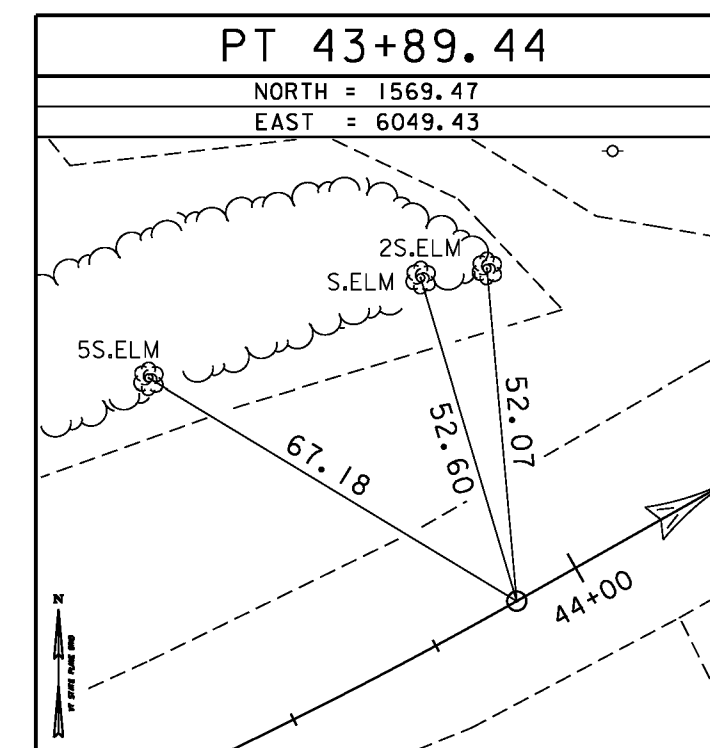
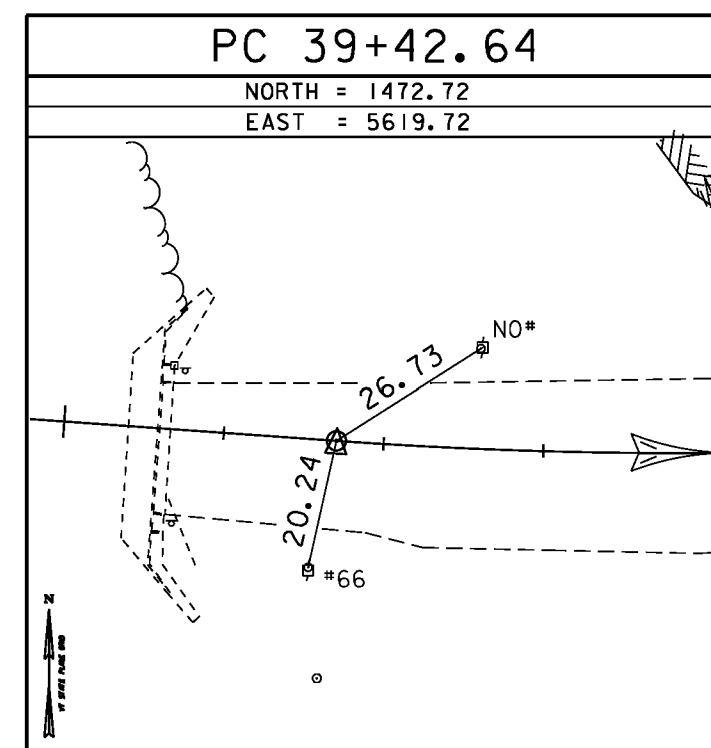
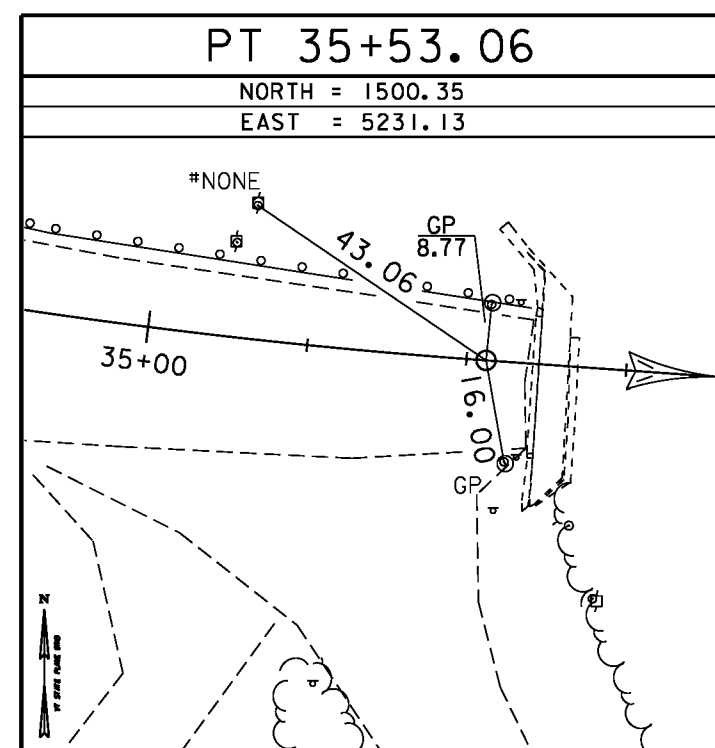
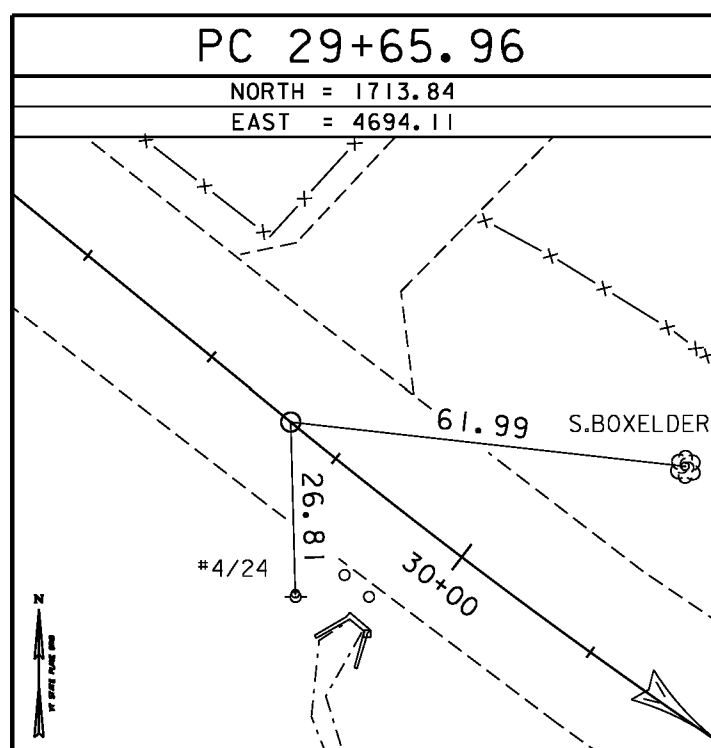
* MAIN TRAVERSE COMPLETED August 1994 By R. Bullock & B. Smith



ALIGNMENT TIES



* ALIGNMENT STAKED 01/23/06 by L.Orvls P.C. & G.Hitchcock & J.Hulett



DATUM	
VERTICAL	NAVD 88
HORIZONTAL	NAD 83
ADJUSTMENT	Least Squares

PROJECT NAME:	Richmond
PROJECT NUMBER:	BRF RS 0284 (II)
FILE NAME:	90c092/survey/x90c092t1.dgn
PROJECT LEADER:	PLOT DATE: 21-JUN-2010
DESIGNED BY:	DRAWN BY: R. Bullock
	CHECKED BY:
	ROW SHEET 13 OF 24