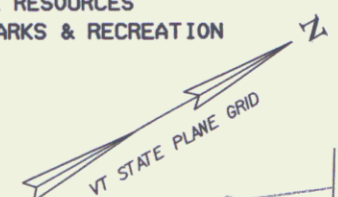




STATE OF VERMONT
AGENCY OF NATURAL RESOURCES
DEPARTMENT OF FOREST, PARKS & RECREATION



Heavy Duty Steel Beam Guard Rail
2000+000.0 ~ 2000+043.3 LT & RT
2000+113.7 ~ 2000+130.0 LT & RT

Bridge Railing - NETC 2 Rail
2000+051.0 ~ 2000+106.0 LT & RT

Guard Rail Approach Section, NETC 2 Rail
2000+043.3 ~ 2000+051.0 LT & RT
2000+106.0 ~ 2000+113.7 LT & RT

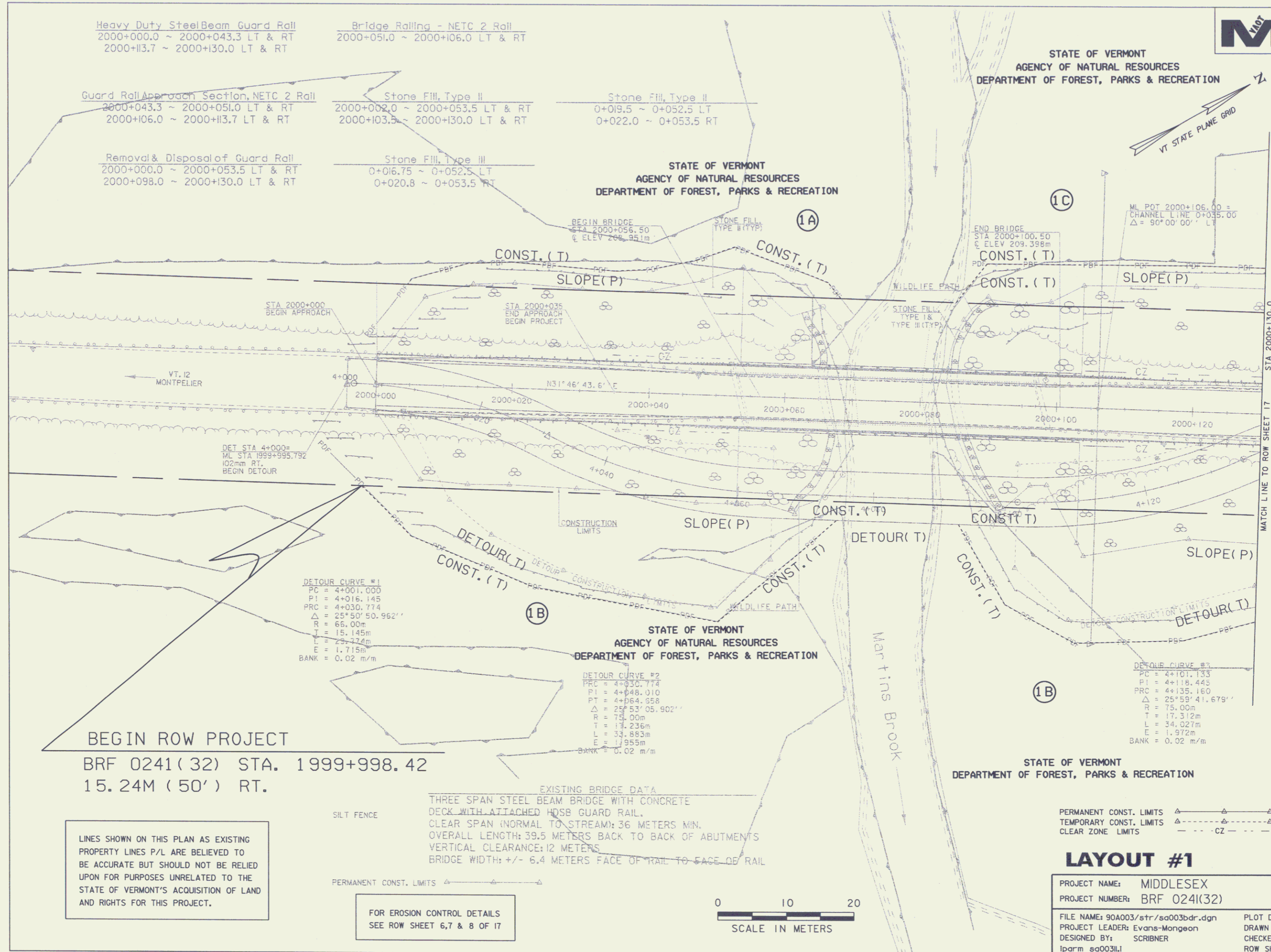
Stone Fill, Type II
2000+002.0 ~ 2000+053.5 LT & RT
2000+103.5 ~ 2000+130.0 LT & RT

Stone Fill, Type II
0+019.5 ~ 0+052.5 LT
0+022.0 ~ 0+053.5 RT

Removal & Disposal of Guard Rail
2000+000.0 ~ 2000+053.5 LT & RT
2000+098.0 ~ 2000+130.0 LT & RT

Stone Fill, Type III
0+016.75 ~ 0+052.5 LT
0+020.8 ~ 0+053.5 RT

STATE OF VERMONT
AGENCY OF NATURAL RESOURCES
DEPARTMENT OF FOREST, PARKS & RECREATION

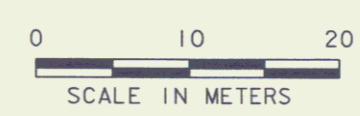


BEGIN ROW PROJECT
BRF 0241(32) STA. 1999+998.42
15.24M (50') RT.

LINES SHOWN ON THIS PLAN AS EXISTING
PROPERTY LINES P/L ARE BELIEVED TO
BE ACCURATE BUT SHOULD NOT BE RELIED
UPON FOR PURPOSES UNRELATED TO THE
STATE OF VERMONT'S ACQUISITION OF LAND
AND RIGHTS FOR THIS PROJECT.

FOR EROSION CONTROL DETAILS
SEE ROW SHEET 6, 7 & 8 OF 17

EXISTING BRIDGE DATA
THREE SPAN STEEL BEAM BRIDGE WITH CONCRETE
DECK WITH ATTACHED HDSB GUARD RAIL.
CLEAR SPAN (NORMAL TO STREAM): 36 METERS MIN.
OVERALL LENGTH: 39.5 METERS BACK TO BACK OF ABUTMENTS
VERTICAL CLEARANCE: 12 METERS
BRIDGE WIDTH: +/- 6.4 METERS FACE OF TRAIL TO FACE OF RAIL



PERMANENT CONST. LIMITS
TEMPORARY CONST. LIMITS
CLEAR ZONE LIMITS

LAYOUT #1

PROJECT NAME: MIDDLESEX
PROJECT NUMBER: BRF 0241(32)
FILE NAME: 90A003/str/so003bdr.dgn
PROJECT LEADER: Evans-Mongeon
DESIGNED BY: SCRIBNER
PLOT DATE: 20-DEC-2005
DRAWN BY: HUSK
CHECKED BY: SCRIBNER
ROW SHEET 16 OF 17

16