

Batched 6/6/99

STATE OF VERMONT
AGENCY OF TRANSPORTATION



PROPOSED IMPROVEMENT
BRIDGE PROJECT

TOWN OF CHARLESTON

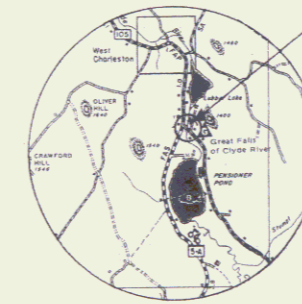
COUNTY OF ORLEANS

ROUTE NO : **VT 105** (MINOR) (ARTERIAL) BRIDGE NO : 75

PROJECT LOCATION : BEGINNING AT A POINT APPROX. 0.17 MI. IN A SOUTHEASTERLY DIRECTION FROM THE INTERSECTION OF ROUTES 105 AND 5A IN CHARLESTON AND EXTENDING NORTHERLY ALONG ROUTE 105 FOR APPROXIMATELY 0.23 MI.
PROJECT DESCRIPTION : REMOVAL OF EXISTING STRUCTURE; CONSTRUCTION OF A NEW SINGLE SPAN STEEL ROLLED BEAM BRIDGE WITH COMPOSITE CONCRETE SLAB DECK, CONCRETE ABUTMENTS, WING WALL, ROADWAY APPROACHES AND RELATED CHANNEL WORK.

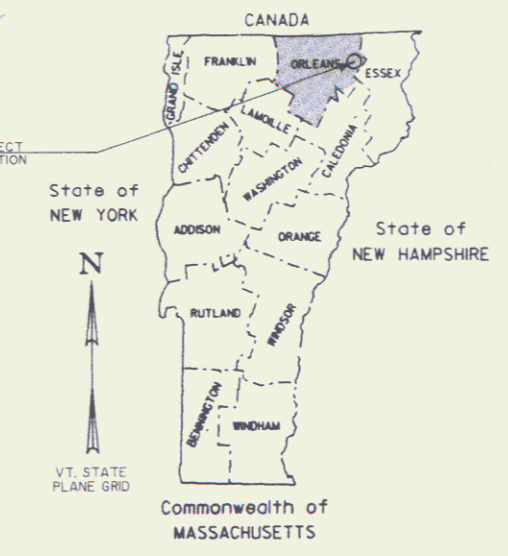
LENGTH OF STRUCTURE : 74.85 FEET. = 0.014 MILES
LENGTH OF PARTICIPATION ROADWAY : 575.15 FEET. = 0.109 MILES
LENGTH OF NON-PARTICIPATION ROADWAY : FEET.
LENGTH OF PROJECT : 650 FEET. = 0.123 MILES
LENGTH OF R.O.W. PROJECT : 774 FEET. = 0.147 MILES

scanned 11-07-01 Judy



LOCATION MAP

SCALE: 1" = 1 MILE



R.O.W. PLANS

GENERAL NOTES

BEGIN ROW PROJECT

BRF-BST 034-3(17) REV. STA. 9+98 25' LT.

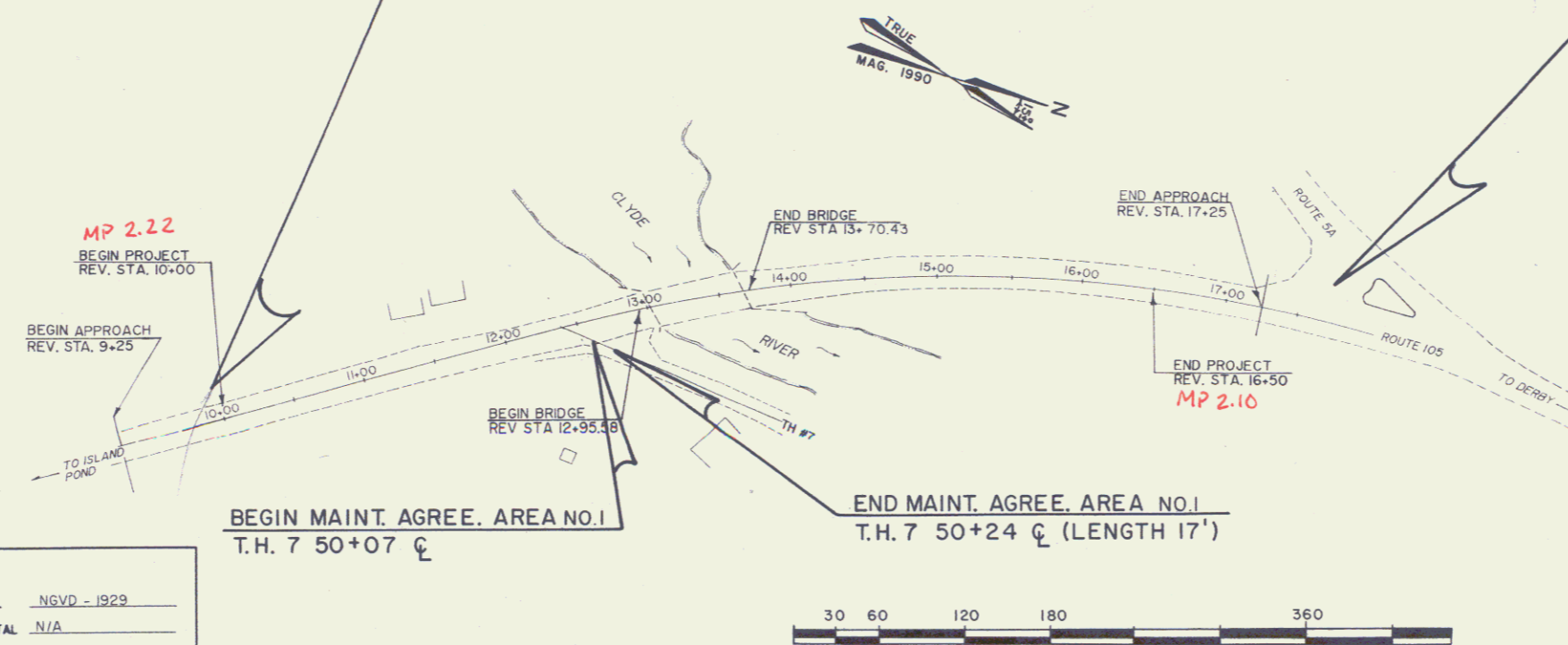
END ROW PROJECT

BRF-BST 034-3(17) REV. STA. 17+72 25' LT.

CONVENTIONAL SIGNS

- COUNTY LINE
- TOWN LINE
- LIMITS OF ACCESS
- POINT OF ACCESS
- FENCE LINE
- STONE WALL
- TRAVELED WAY
- GUARD RAIL
- RAILROAD
- SURVEY LINE
- CULVERT
- POWER POLE
- TELEPHONE POLE
- TREES
- CONTROL OF ACCESS
- PROPERTY LINE
- R.O.W. TAKING LINE
- SLOPE RIGHTS
- TOP OF CUT
- TOE OF SLOPE

DATUM
VERTICAL : NGVD - 1929
HORIZONTAL : N/A



ALL DRIVES AS INDICATED ON PLANS ARE SUBJECT TO PERMITS PURSUANT TO TITLE 19 SECTION III, V.S.A.

THESE PLANS ARE SUBJECT TO SUCH ENGINEERING CHANGES AS MAY BE REQUIRED BY THE FEDERAL HIGHWAY ADMINISTRATION OR THE DIRECTOR OF ENGINEERING. CONSTRUCTION IS TO BE CARRIED ON IN ACCORDANCE WITH THESE PLANS AND THE VAOT STANDARD SPECIFICATIONS FOR CONSTRUCTION 1990 EDITION FOR USE ON THESE PROJECTS, INCLUDING ALL SUBSEQUENT PROVISIONS AS ARE INCORPORATED IN THESE PLANS.

pin: 89B042

APPROVED: *[Signature]* DATE: *9/4/92*
Director of Engineering

APPROVED: *[Signature]* DATE: *9/4/92*
Chief, Right of Way

CHARLESTON
BRF-BST 034-3(17)
R.O.W. SHEET **1** OF 8 SHEETS

Research Set

**STATE OF VERMONT
AGENCY OF TRANSPORTATION
RIGHT OF WAY PLANS
DETAIL SHEET**

TABLE OF PROJECT PROPERTY ACQUISITION

PARCEL NO.	GRANTOR	SHEET NO.	BEGINNING STATION	ENDING STATION	TAKING	REM.	RIGHTS	TITLE TAKEN	DATE	TOWN OR CITY RECORDED	BK.	PG.	REMARKS	REVISION NO.	SHEET	DESCRIPTION OF REVISION	DATE	MADE BY	APPROVED BY
1A	MORIN, JEAN PAUL & CARMEN	7	REV. 9+98 LT. REV. 10+28 LT. REV. 10+72 LT. REV. 10+85 LT.	REV. 10+96 LT. REV. 10+96 LT. REV. 10+85 LT. REV. 10+96 LT.			CONST. (T) 0.02A± SLOPE (T) 0.02A± CULVERT (P) DITCH & DRAINAGE (P) 0.01A±	WDOE	06-17-94	CHARLESTON	46	235	300 S.F.± 675 S.F.± 150 S.F.±	1	6	GENERAL REVISION. ADD MAINTENANCE AGREEMENT AREA # 1 TO DETAIL SHEET, PER C.O. 8432.	09-08-93	C. C. P.	L. W. B.
1B		7, 8	REV. 13+46 LT. REV. 13+46 LT. REV. 14+45 LT. REV. 15+50 LT. REV. 16+50 LT. REV. 16+65 LT.	REV. 15+50 LT. REV. 16+80 LT. REV. 15+50 LT. REV. 16+11 LT. REV. 17+05 LT. REV. 16+81 LT.	0.07A±		INSTALL (T) CONST. (T) 0.01A± SLOPE (T) 0.01A± CONST. (T) 0.01A± SLOPE (T) 0.01A±						2975 S.F.± FENCE 210 S.F.± 25 S.F.± 250 S.F.± 25 S.F.±	2	5, 7	PARCEL NO. 2 COLE. CHANGE TITLE TO POWERS, DEAN G. & CHARLOTTE R. PER C.O. 8470.	12-27-93	M. J. R.	L. W. B.
1C		8	REV. 17+39 LT.	REV. 17+72 LT.	0.01A±								290 S.F.±	3	5, 7	PARCEL NO. 3 STEUWE. ADD 'STOCKPILE (T)' FOR STONE WALL AT STA. REV. 10+95 LT. - REV. 12+80 LT. TO DETAIL SHEET. ADD NOTE TO LAYOUT; 'STONE WALL TO BE STOCKPILED'. ALSO ADD SEPTIC TANK AND LEACHFIELD TO LAYOUT, PER C.O. 8570. REPRODUCIBLES TO STRUCTURES II-2-94	06-01-94	C. C. P.	L. W. B.
2	POWERS, DEAN G. & CHARLOTTE R.	7	REV. 10+57 RT.				DRIVE (T)	COND.	07-28-94	CHARLESTON	46	263	16' GRAVEL MP 0223						
3	STEUWE, ROY A.	7	REV. 12+00 LT. REV. 10+94 LT. REV. 10+96 LT. REV. 10+96 LT. REV. 10+96 LT. REV. 10+96 LT.± REV. 11+40 LT. REV. 11+60 LT. REV. 11+60 LT.± REV. 11+94 LT.	REV. 12+80 LT. REV. 12+80 LT. REV. 11+32 LT. REV. 10+98 LT. REV. 11+30 LT. REV. 11+60 LT. REV. 12+25 LT.± REV. 12+28 LT.	0.04A±		STOCKPILE (T) SLOPE (T) 0.01A± DITCH & DRAINAGE (P) CONST. (T) 0.01A± EXTEND OVER FLOW (T) DRIVE (T) REMOVE (T) CONST. (T) 0.01A±	WDOE	07-29-94	CHARLESTON	46	270	1650 S.F.± STONE WALL 275 S.F.± 450 S.F.± BURIED WELL OVER FLOW PIPE WELL OVER FLOW 24' PAVED MP 0221 WELL FLOWERS & SHRUBS 200 S.F.±						
4	BOMEN, FLOYD & JOANNE P.	7	REV. 11+87 RT. REV. 12+00 RT. REV. 12+25 RT. REV. 11+70 RT.	REV. 12+13 RT. T.H. 7 50+55 RT. REV. 12+51 RT. REV. 12+00 RT.			SLOPE (T) 0.01A± REMOVE & RESET (T) SLOPE (T) 0.01A±	AGREE.					15 S.F.± FENCE 25 S.F.± FENCE						

<p>0343017 200 1805 898042</p> <p>ACCT.prp /prop/898042/rb042.dgn DATE PLOTTED 6-SEP-1994 rb042dl1</p>	<p>DR. (P)- DRAINAGE RIGHT DIT. (P)- DITCHING RIGHT CH. (P)- CHANNEL RT. DRIVE (T)- DRIVE RIGHT CUL. (P)- CULVERT RIGHT [W]- WATER SOURCES</p>	<p>PRESENT R.O.W. TAKING WITHOUT ACCESS TAKING WITHOUT ACCESS ALONG PROPERTY LINE TAKING WITH ACCESS PERMANENT EASEMENT TEMPORARY EASEMENT</p>	<p>LEGEND</p> <p>--- CZ (P) --- CLEAR ZONE --- CONST. (T) --- CONSTRUCTION EASEMENT SR SR SLOPE RIGHTS P PROPERTY LINE △ TOP OF CUT ○ TOP OF SLOPE</p>	<p>REVISED 06-01-94</p> <p>APPROVED: LAWRENCE BLISS, L.S. DATE: 09-21-92 AGENT D, PLANS & TITLES</p>	<p>R. O. W. PLANS</p> <p>CHARLESTON BRF-BST 034-3(17) SHEET 5 OF 8</p>
--	--	--	--	--	--

TABLE OF PROJECT PROPERTY ACQUISITION

STATE OF VERMONT
AGENCY OF TRANSPORTATION
RIGHT OF WAY PLANS
DETAIL SHEET

PARCEL NO.	GRANTOR	SHEET NO.	BEGINNING STATION	ENDING STATION	TAKING	REM.	RIGHTS	TITLE TAKEN	DATE	TOWN OR CITY RECORDED	BK.	PG.	REMARKS	REVISION NO.	SHEET	DESCRIPTION OF REVISION	DATE	MADE BY	APPROVED BY	
5	TOWN OF CHARLESTON	7	REV. 12+41 RT. REV. 12+53 RT. REV. 12+53 RT. T.H. 7 50+56 CL. REV. 13+11 RT. T.H. 7 50+45 LT.	REV. 12+53 RT. REV. 13+14 RT. REV. 12+80 RT. REV. 13+33 RT. T.H. 7 50+60 LT.			DITCH (P) CULVERT (P) REMOVE (T) APPROACH (T) CHANNEL (P) 0.01A± INSTALL & MAINTAIN (P)	OCDOE	06-16-94	CHARLESTON	46	233	CULVERT T.H. 7 110 S.F.± GUARDRAIL							
6	BARTON VILLAGE, INC.	7,8	REV. 14+44 RT. REV. 15+32 RT. REV. 15+61 RT.	REV. 14+50 RT. REV. 17+35 RT. REV. 17+00 RT.			CHANNEL (P) 0.01A± CONST. (T) 0.04A± DITCH (P) 0.03A±	COND.	07-28-94	CHARLESTON	46	263	15 S.F.± 1700 S.F.± 1200 S.F.±							
7	CITIZENS UTILITIES COMPANY							COND.	07-28-94	CHARLESTON	46	263	UTILITY							
8	NEW ENGLAND TELEPHONE COMPANY							COND.	07-28-94	CHARLESTON	46	263	UTILITY							
9	BARTON VILLAGE ELECTRIC DEPT., INC.							COND.	07-28-94	CHARLESTON	46	263	UTILITY							
	MAINTENANCE AGREEMENT * 1	7	T. H. 7 50+07 CL.	T. H. 7 50+24 CL.									LENGTH 17'							

034301.7 200 1805 898042

ACCT.prp
/prop/89b042/rb042d.dgn
DATE PLOTTED 6-SEP-1994
FD042d2.1

DR. (P)- DRAINAGE RIGHT
DIT. (P)- DITCHING RIGHT
CH. (P)- CHANNEL RT.
DRIVE (T)- DRIVE RIGHT
CUL. (P)- CULVERT RIGHT
[W]- WATER SOURCES

PRESENT R.O.W.
TAKING WITHOUT ACCESS
TAKING WITHOUT ACCESS ALONG PROPERTY LINE
TAKING WITH ACCESS
PERMANENT EASEMENT
TEMPORARY EASEMENT

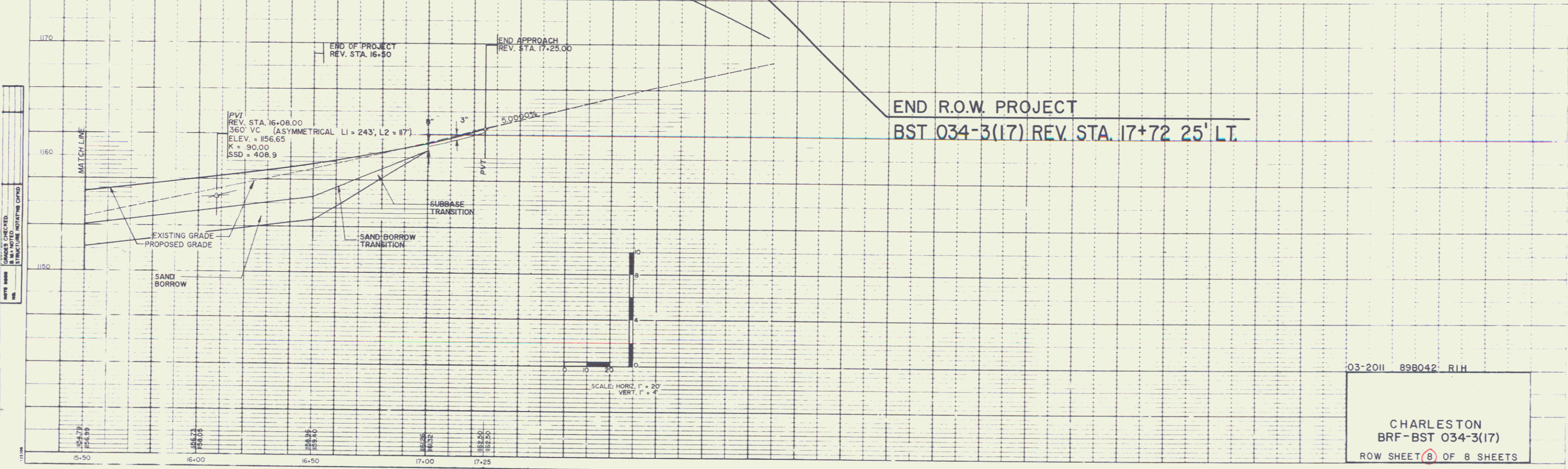
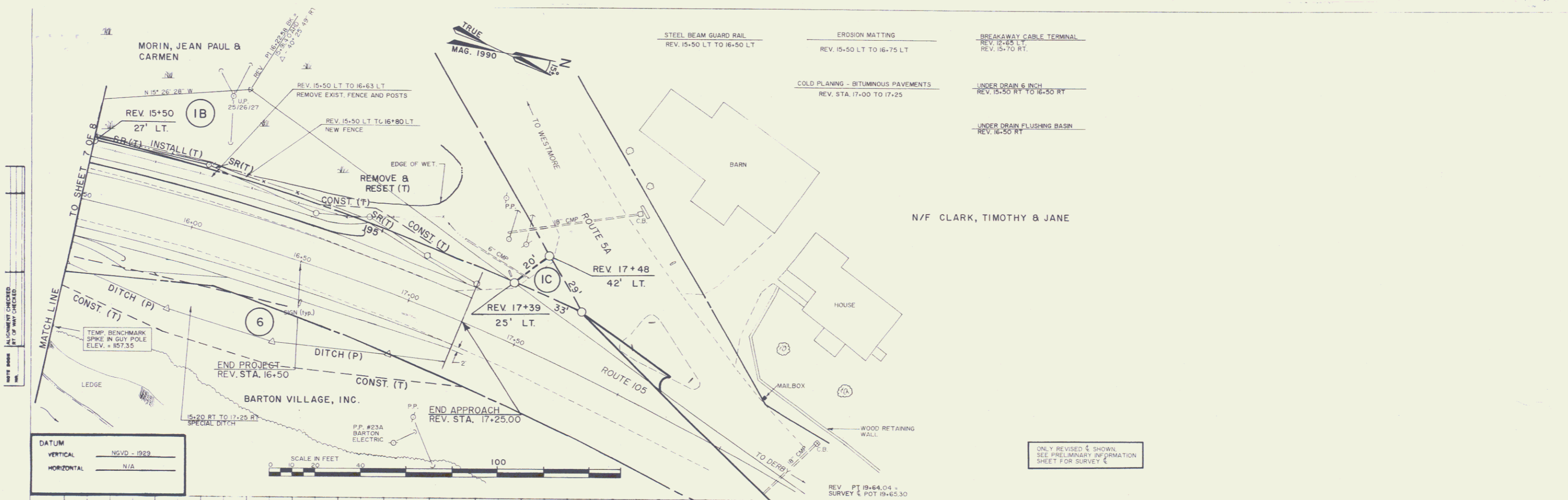
LEGEND . . . CZ (P) CLEAR ZONE
CONST. (T) CONSTRUCTION EASEMENT
SR SR SLOPE RIGHTS
P PROPERTY LINE
L TOP OF CUT
L TOE OF SLOPE

REVISED 06-01-94

R. O. W. PLANS

APPROVED: LAWRENCE BLISS, L.S. DATE: 09-21-92
AGENT D, PLANS & TITLES

CHARLESTON
BRF-BST 034-3(17)
SHEET 6 OF 8



03-2011 898042 R1H

CHARLESTON
BRF-BST 034-3(17)
ROW SHEET 8 OF 8 SHEETS

5