

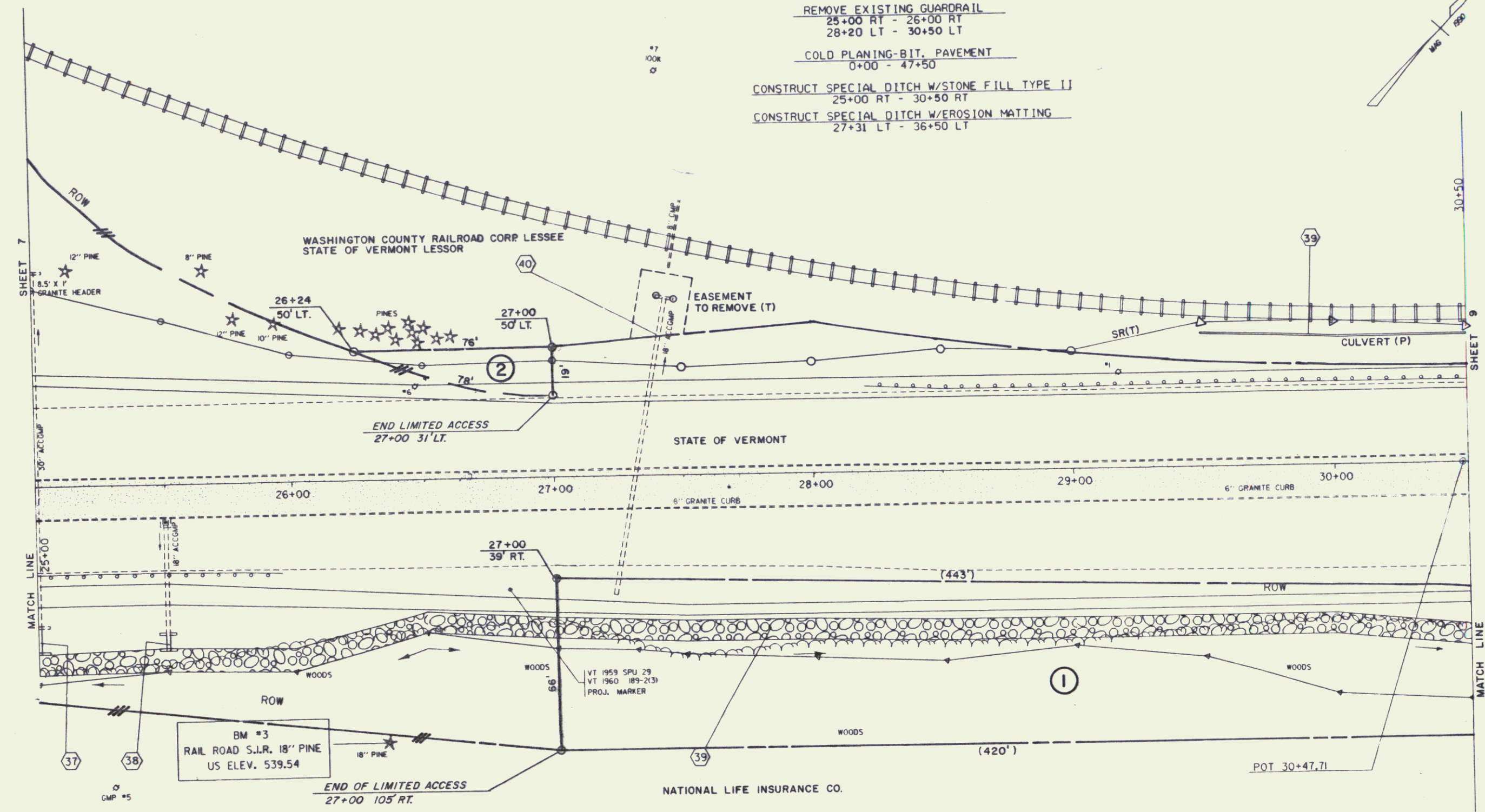
STEEL BEAM GUARDRAIL
 6+75 RT - 30+75 RT
 19+50 LT (RAMP 'M' RT) - 35+50 LT

REMOVE EXISTING GUARDRAIL
 25+00 RT - 26+00 RT
 28+20 LT - 30+50 LT

COLD PLANING-BIT. PAVEMENT
 0+00 - 47+50

CONSTRUCT SPECIAL DITCH W/STONE FILL TYPE II
 25+00 RT - 30+50 RT

CONSTRUCT SPECIAL DITCH W/EROSION MATTING
 27+31 LT - 36+50 LT



- DRAINAGE NOTES
- (37) 25+00 RT NEW 30' X 10' CSP (.079), REMOVE EXIST. HEADWALL. CONSTRUCT NEW HEADWALL
 - (38) 25+50 RT NEW 18' X 6' CSP (.064), REMOVE EXIST. HEADWALL. CONSTRUCT NEW HEADWALL
 - (39) 29+50 LT NEW 6" X 350' UNDERDRAIN W/ FB AT 29+50 LT.
 - (40) 27+31 CL ABANDON 18" PIPE. PLUG ENDS. REMOVE EXISTING HEADWALL

03-10-95	REVISION 2
05-26-93	REVISION 1
SURVEYED BY	Fall DATE 5-90
DRAWN BY	Squade-jfg DATE 6-90
SQUAD LEADER	D.F.Hale
FILE	/usr/zfg2/055050.dwg/89b018
PARM	89B018L5J DATE PLOTTED 30-DEC-1992
PROJ. NAME	MONTPELIER
PROJ. NO.	FEGC-F 028-2(8)S
SHEET	(8) OF 15 SHEETS

ICAL NGVD 1929
 ONTAL N/A

