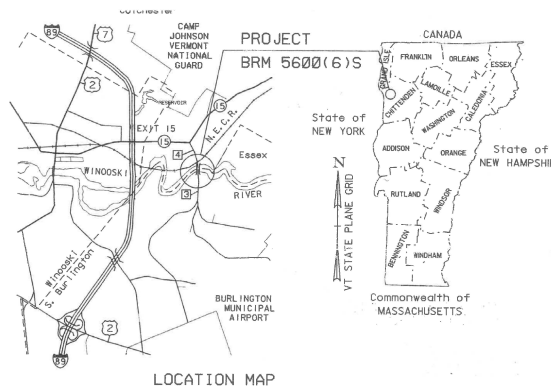


STATE OF VERMONT
AGENCY OF TRANSPORTATION



PROPOSED IMPROVEMENT
BRIDGE PROJECT

TOWN OF COLCHESTER AND CITY OF SOUTH BURLINGTON
COUNTY OF CHITTENDEN
TH 4/3 (URBAN MINOR ARTERIAL), BRIDGE NO. 6
LIME KILN BRIDGE



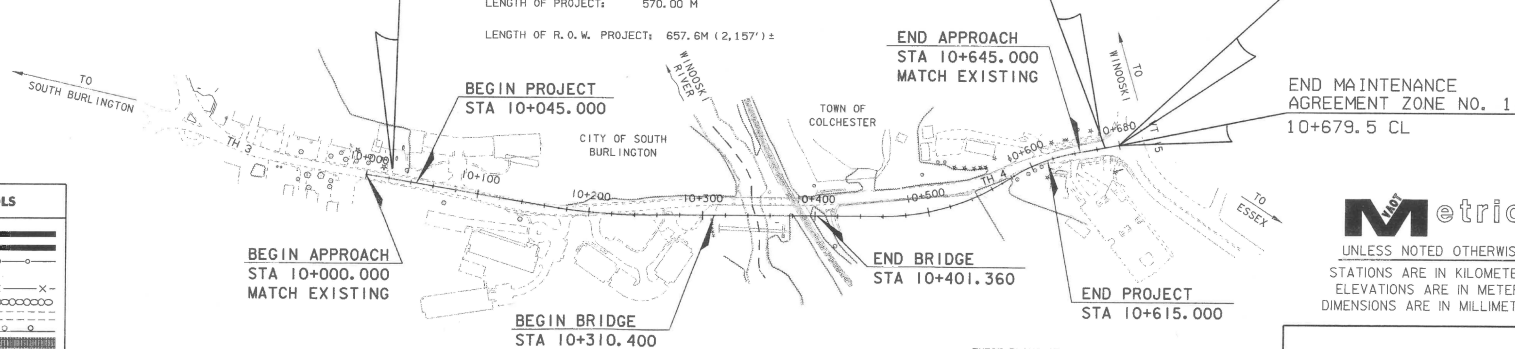
R.O.W. PLANS

BEGIN R.O.W. PROJECT
BRM 5600 (6) S C/2
STA. 10+021.87 9.14M(30.0') LT.

END R.O.W. PROJECT
BRM 5600 (6) S C/2
STA. 10+679.5 CL

PROJECT LOCATION: BEGINNING AT A POINT ON TH 3, 0.635 KM SOUTH OF VT 15/TH 4 INTERSECTION AND EXTENDING NORTHERLY 0.570 KM.
PROJECT DESCRIPTION: CONSTRUCTION OF A NEW CONCRETE ARCH BRIDGE WITH RELATED ROADWAY WORK AND REMOVAL OF AN EXISTING CONCRETE ARCH BRIDGE.
LENGTH OF STRUCTURE: 90.96 M
LENGTH OF ROADWAY: 479.09 M
LENGTH OF PROJECT: 570.00 M
LENGTH OF R.O.W. PROJECT: 657.6M (2,157') ±

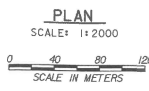
BEGIN MAINTENANCE
AGREEMENT ZONE NO. 1
10+667.4 CL,
LENGTH 12.1M (39.7')



END MAINTENANCE
AGREEMENT ZONE NO. 1
10+679.5 CL

CONVENTIONAL SYMBOLS	
COUNTY LINE	— — — — —
TOWN LINE	— — — — —
LIMITS OF ACCESS	— — — — —
POINT OF ACCESS	X
FENCE LINE	— X — X — X —
STONE WALL	— — — — —
TRAVELED WAY	— — — — —
GUARD RAIL	— — — — —
RAILROAD	— — — — —
SURVEY LINE	— — — — —
CULVERT	— — — — —
POWER POLE	⊕
TELEPHONE POLE	⊕
TREES	⊕
CONTROL OF ACCESS	— — — — —
PROPERTY LINE	— — — — —
R.O.W. TAKING LINE	— — — — —
SLOPE RIGHTS	— — — — —
TOP OF CUT	— — — — —
TOE OF SLOPE	— — — — —

SURVEYED BY: EIV TECHNICAL SERVICES, LLC
VERMONT AGENCY OF TRANSPORTATION
SURVEYED DATE: 6/97, 11/02
2/02, 11/02
DATUM
VERTICAL NAVD 88
HORIZONTAL NAD 83 (1992)



THESE PLANS ARE SUBJECT TO SUCH ENGINEERING CHANGES AS MAY BE REQUIRED BY THE FEDERAL HIGHWAY ADMINISTRATION OR THE DIRECTOR OF PROGRAM DEVELOPMENT.
CONSTRUCTION IS TO BE CARRIED ON IN ACCORDANCE WITH THESE PLANS AND THE STANDARD SPECIFICATIONS FOR CONSTRUCTION DATED 2001, AS APPROVED BY THE FEDERAL HIGHWAY ADMINISTRATION ON JANUARY 4, 2001 FOR USE ON THIS PROJECT, INCLUDING ALL SUBSEQUENT REVISIONS AND SUCH REVISED SPECIFICATIONS AND SPECIAL PROVISIONS AS ARE INCORPORATED IN THESE PLANS.

Metric
UNLESS NOTED OTHERWISE
STATIONS ARE IN KILOMETERS
ELEVATIONS ARE IN METERS
DIMENSIONS ARE IN MILLIMETERS

APPROVED: DAVID J. SCOTT Director of Project Development	DATE: 9-15-03
APPROVED: ALLEN N. BLAKE Chief of Right of Way	DATE: 9-15-03
COLCHESTER-SOUTH BURLINGTON BRM 5600 (6) S C/2 R.O.W. SHEET 1 OF 21 SHEETS	

04D216R.Cr5 August 31, 2007

Coordinate Report

Colchester-S.Burlington BRM 5600(6)

Surveyed By: L.Orvis PC/G.Hitchcock,R.Bockus

Note: Bounds set are iron pins with cap stamped "LS451 BRM 5600(6)"

BNDNS = Iron Pin NOT Set

Bounds and IP found

Pt Name	Northing	Easting	Desc.
1000	221504.4555	447284.2083	BND
1001	221514.4145	447300.2939	BND
1002	221349.0118	447324.1405	BND
1003	221340.1535	447310.6700	BND
1004	221338.6750	447310.8367	BND
1005	221195.7360	447454.1750	IP
1006	221251.5925	447446.5144	IP
1019	221121.4395	447415.4875	IP
1020	221098.1909	447344.3891	IP
1021	221099.4313	447325.3343	IP
1022	221105.4898	447319.8336	IP
1023	220936.4310	447332.1607	IP
1024	220934.0498	447286.8567	IP
1025	220816.7924	447315.8955	BND
1026	221306.0972	447261.6204	BND
1027	221249.4698	447120.7102	IP

ROW Bounds - set

Pt Name	Northing	Easting	Desc.
315	221,101.610	447,364.817	10+156.170 14.42RT BND
316	221,098.166	447,341.057	10+151.550 9.14LT BND
317	221,119.251	447,342.105	10+172.660 9.14LT BND
321	221,323.566	447,340.618	10+377.590 7.62RT BND
322	221,328.066	447,346.241	10+381.410 13.72RT BND
323	221,364.005	447,342.054	10+417.590 13.72RT DH
324	221,376.326	447,340.625	10+430.000 13.72RT BND
325	221,375.625	447,334.567	10+430.000 7.62RT BND
326	221,404.527	447,331.205	10+459.100 7.62RT BND
327	221,519.220	447,279.970	10+582.380 7.62RT BND
328	221,518.655	447,279.254	10+582.380 6.71RT BND
330	221,498.374	447,270.430	10+571.980 12.81LT BND
331	221,513.423	447,258.946	10+590.250 12.67LT BND
332	221,544.871	447,262.730	10+614.890 6.71RT BND
333	221,544.989	447,264.215	10+614.310 8.10RT BND
334	221,588.295	447,229.220	10+667.420 10.67LT WIT Not set
335	221,509.613	447,287.598	10+570.110 7.62RT BND
337	221,497.493	447,268.437	10+572.530 14.92LT BND

M:\PROJECTS\870139\RIGHTOFWAY\CORR.REPORT.DGN

PROJECT NAME: COLCHESTER-SOUTH BURLINGTON
PROJECT NUMBER: BRM 5600(6) S C/2

FILE NAME:
PROJECT LEADER:
DESIGNED BY:

PLOT DATE: 27-AUG-2008
DRAWN BY: MR
SHEET 1A OF 2I

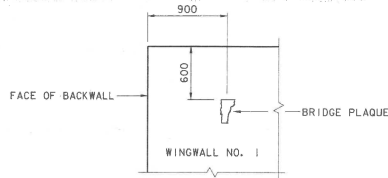
MAY 12 2010

INDEX OF SHEETS

1	TITLE SHEET
2	PRELIMINARY INFORMATION SHEET
3	ROADWAY TYPICAL SECTIONS - SOUTH
4	ROADWAY TYPICAL SECTIONS - NORTH
5	NOTES AND TYPICAL DETAILS
6-10	PLAN
11	PARKING AREA PLAN
12	PATH & LOOKOUT PLAN & TYPICALS
13-14	DRAINAGE & SEWER NOTES/DETAILS
15-19	PROFILE
20	TRAFFIC SIGN SUMMARY
21	TRAFFIC CONTROL PLAN
22	BORING INFORMATION SHEET
23-26	BORING LOGS
27	BRIDGE PLAN & ELEVATION
28-30	EROSION CONTROL PLAN VERMONT GAS SYSTEM DETAILS ROADWAY SECTIONS

STANDARDS

A-62M	6-13-97	D-20M	6-13-97	E-142M	6-13-97
B-5M	1-3-00	D-22M	6-13-97	E-143M	6-13-97
B-11M	6-13-97	E-100AM	2-2-98	E-144M	3-29-99
B-71M	3-1-01	E-100M	6-13-97	E-150M	6-13-97
C-1M	1-3-00	E-101M	6-13-97	E-160M	6-13-97
C-2AM	1-3-00	E-102AM	6-13-97	E-191M	2-1-99
C-3M	1-3-00	E-102M	6-13-97	E-192M	12-28-98
D-2M	6-13-97	E-105M	6-13-97	E-193M	6-13-97
D-3M	6-13-97	E-107M	6-13-97	G-10M	1-3-00
D-4M	6-13-97	E-107AM	6-13-97	G-1M	1-3-00
D-11M	6-13-97	E-108M	6-13-97	G-18M	6-13-97
D-13M	1-3-00	E-110M	6-13-97	T-1M	6-13-97
D-15M	6-13-97	E-121M	6-13-97	T-2M	6-13-97
D-16M	6-13-97	E-124M	6-13-97		
D-17M	6-13-97	E-141M	6-13-97		



VIEW A-A

THE BRIDGE PLAQUE SHALL BE SUPPLIED BY THE AGENCY OF TRANSPORTATION AND INSTALLED BY THE CONTRACTOR AT WINGWALL NO. 1 AS SHOWN OR AS DIRECTED BY THE ENGINEER.

BRIDGE PLAQUE LOCATION
NOT TO SCALE

FINAL HYDRAULICS REPORT



HYDROLOGIC DATA *

CHARACTER OF TERRAIN: _____
 CHARACTER & TYPE OF STREAM: _____
 NATURE OF STREAMBED: _____
 02.33= _____ 050= _____
 010= _____ 20.5= _____
 025= _____ 0500= _____
 DATE OF FLOOD OF RECORD: _____
 WATER SURFACE ELEV. ESTIMATED DISCHARGE: _____
 ICE CONDITIONS: _____ DEBRIS: _____
 DOES THE STREAM REACH MAXIMUM HIGHWATER ELEVATION RAPIDLY? _____
 IS ORDINARY RISE RAPID? _____
 IS STAGE AFFECTED BY UPSTREAM OR DOWNSTREAM CONDITIONS? _____
 IF YES, DESCRIBE: _____
 WATERSHED STORAGE: _____ UNIFORM THROUGHOUT WATERSHED
 IMMEDIATELY ABOVE SITE

PROPOSED STRUCTURE *

STRUCTURE TYPE: REINFORCED CONCRETE ARCH (SEE NOTE 2)
 CLEAR SPAN (NORMAL TO STREAM): _____
 VERTICAL CLEARANCE ABOVE STREAMBED: _____
 WATERWAY OF FULL OPENING: _____
 WATER SURFACE ELEV. @ 02.33= _____ VELOCITY= _____
 010= _____
 025= _____
 050= _____
 0100= _____
 IS THE ROADWAY OVERTOPPED BELOW THE 0100? _____ FREQUENCY: _____
 RELIEF ELEVATION: _____ DISCHARGE OVER ROAD @ 0100: _____
 AVERAGE LOW ELEVATION OF SUPERSTRUCTURE: _____
 VERTICAL CLEARANCE @ 0: _____
 SCOUR ALL PILES AND ABUTMENTS TO BE FOUNDED ON BEDROCK.
 REQUIRED CHANNEL PROTECTION: _____

EXISTING STRUCTURE *

STRUCTURE TYPE: REINFORCED CONCRETE ARCH YEAR BUILT: 1913
 CLEAR SPAN (NORMAL TO STREAM): 29.5 m
 VERTICAL CLEARANCE ABOVE STREAMBED: 29.6 m
 WATERWAY OF FULL OPENING: N/A
 DISPOSITION OF STRUCTURE: HISTORICAL ARCH OVER ROCK GORGE TO BE REPLACED
 TYPE OF MATERIAL UNDER SUBSTRUCTURE: ROCK (PRIMARILY LIMESTONE AND DOLOMITIC MARBLE OF THE SHELBURNE FORMATION)
 WATER SURFACE ELEV. @ 02.33= _____ VELOCITY= _____
 010= 62.1 m _____
 025= _____
 050= 63.5 m _____
 0100= 64.5 m _____
 LONG TERM STREAM BED CHANGES: UNKNOWN
 IS THE ROADWAY OVERTOPPED BELOW THE 0100? NO FREQUENCY: _____
 RELIEF ELEVATION: UNKNOWN DISCHARGE OVER ROAD @ 0100: UNKNOWN
 UPSTREAM STRUCTURE: TOWN: _____ DISTANCE: _____
 HIGHWAY NO.: _____ STRUCTURE NO.: _____
 STRUCTURE TYPE: _____
 CLEAR SPAN: _____ CLEAR HEIGHT: _____
 YEAR BUILT: _____ FULL WATERWAY: _____
 DOWNSTREAM STRUCTURE: TOWN: _____ DISTANCE: _____
 HIGHWAY NO.: _____ STRUCTURE NO.: _____
 STRUCTURE TYPE: _____
 CLEAR SPAN: _____ CLEAR HEIGHT: _____
 YEAR BUILT: _____ FULL WATERWAY: _____

PERMIT INFORMATION

AVERAGE DAILY FLOW: _____
 ORDINARY LOW WATER: _____ DEPTH: _____
 ORDINARY HIGH WATER: _____ DEPTH: _____

ADDITIONAL COMMENTS *

1. HYDRAULIC AND HYDROLOGIC INFORMATION IS FROM THE FEMA FLOOD INSURANCE STUDY FOR THE TOWN OF COLCHESTER, SEPTEMBER 1, 1981 AND THE CITY OF SOUTH BURLINGTON, SEPTEMBER 16, 1980. ADDITIONAL ANALYSES WERE NOT CONDUCTED AT THIS SITE.
2. HYDRAULIC CONDITIONS WILL NOT CHANGE FOR THE NEW STRUCTURE.



DESIGN CRITERIA:

1. DESIGN LIVE LOAD AASHTO MS 22.5
2. DESIGN SPAN 19 m, 40.5 m, 31.28 m
3. ALLOWABLE LOAD FOR SPREAD FOOTINGS ON SOIL 190 kPa ON LEDGE 500 kPa
4. ALLOWABLE LOAD FOR PILING N/A TYPE ESTIMATED LENGTH
5. STRUCTURAL STEEL N/A
6. REINFORCING STEEL GRADE 420
7. CONCRETE CLASS A f_c 30 MPa
CLASS B f_c 25 MPa
SILICA FUME f_g 35 MPa

TRAFFIC MAINTENANCE:

1. IS TRAFFIC TO BE MAINTAINED? YES IF YES, ON EXISTING STRUCTURE YES OR ON TEMPORARY BRIDGE
2. TEMPORARY BRIDGE REQUIREMENTS: ONE OR TWO WAY _____ TRAFFIC CONTROL SIGNALS REQUIRED NO
 MINIMUM CLEAR SPAN (NORMAL TO STREAM): _____ VERTICAL CLEARANCE ABOVE STREAMBED: _____
 WATERWAY OF FULL OPENING: _____
 ARE SIDEWALKS REQUIRED? IF SO, ON WHAT SIDE? _____
 STRUCTURE TYPE: _____

LOAD FACTOR LOAD RATING (METRIC TONNES)

LOAD FACTOR	TRUCK						
	M	MS	352	6 AXLE	3A STR.	4A STR.	5A SEMI
A = 2.17 B=1.00	---	---	---	---	---	---	---
A = 1.55 B=1.40	---	---	---	---	---	---	---
A = 1.30 B=1.67	---	---	---	---	---	---	---

STRENGTH RF = $\phi M_u = 1.3 M_{uL}$ SERVICEABILITY RF = $95F_s S_{LL+I} - M_{uL} - M_{uL+I}$
 $A \times M_{uL+I}$ $1.67 M_{uL+I}$

TRAFFIC DATA - TH 4/3

2004 ADT = 7500	2024 ADT = 10,000	2004-2024 ESAL'S = 1,554,000
2004 DHV = 940	2024 DHV = 1115	2004-2024 ESAL'S = 3,645,000
2004 ADTT = 225	2024 ADTT = 300	DESIGN SPEED = 50 KM/H
2024 ZD = 65		
2024 ZT = 3		

STATE OF VERMONT
AGENCY OF TRANSPORTATION

Town Of COLCHESTER-SOUTH BURLINGTON	Bridge No. 6
Highway No. TH 4/3	Log Sta. _____ Surv. Sta. _____
TH 4/3 OVER WINOOSKI RIVER & N.E.C.R.	

PRELIMINARY INFORMATION SHEET

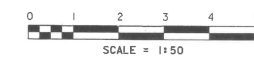
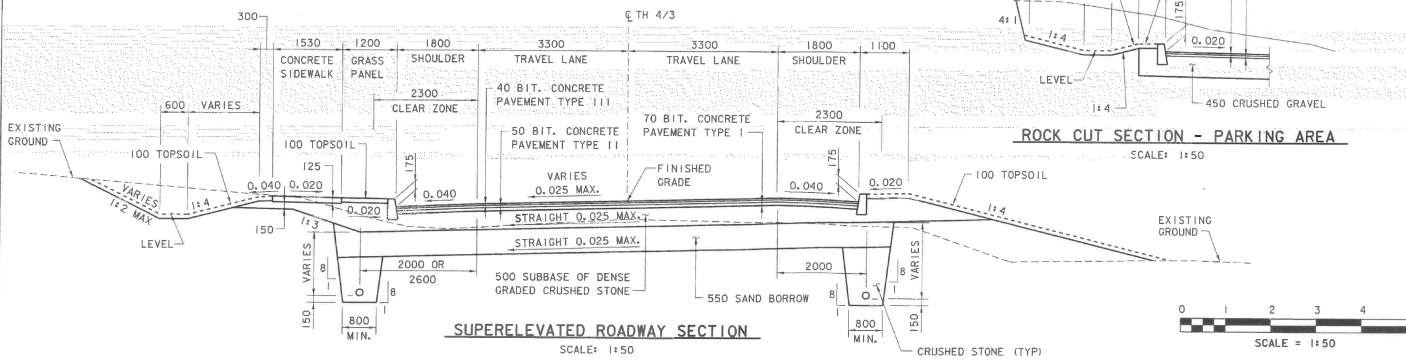
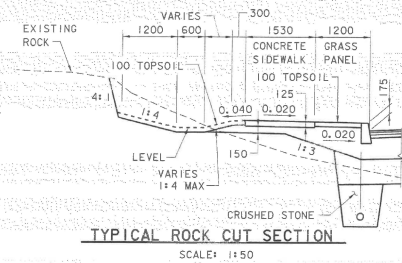
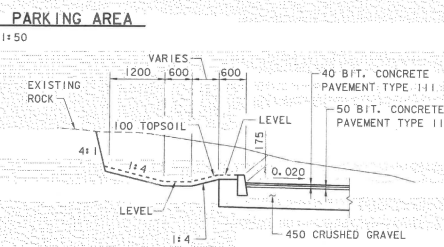
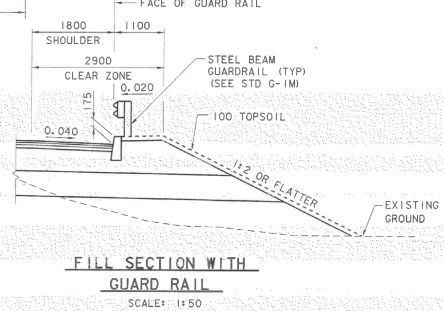
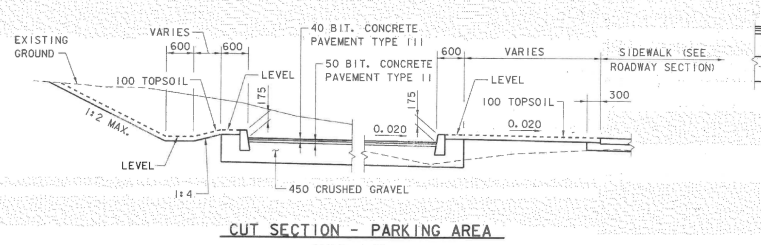
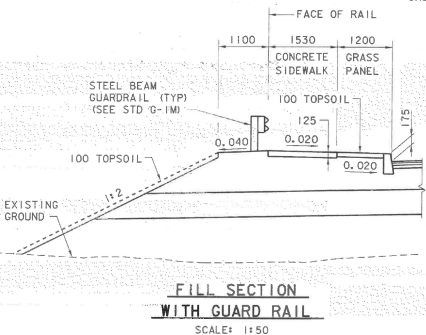
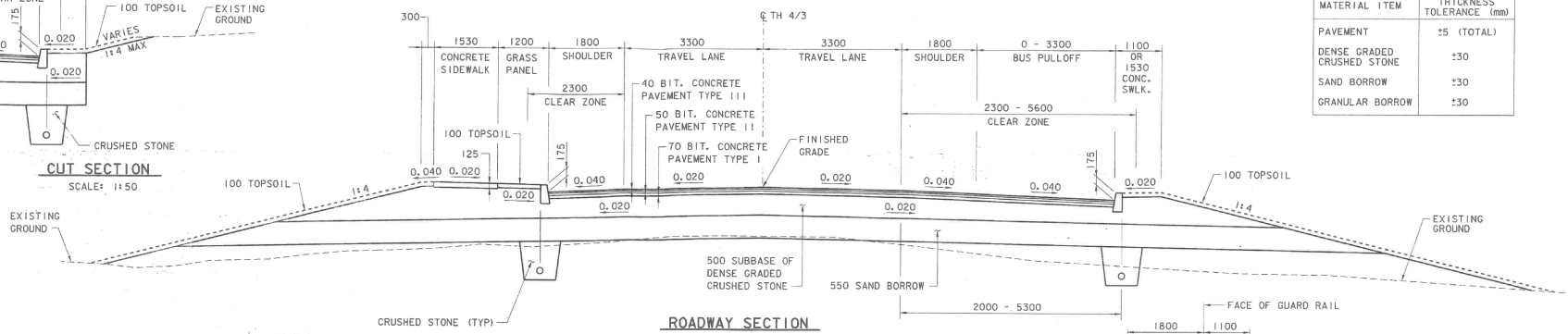
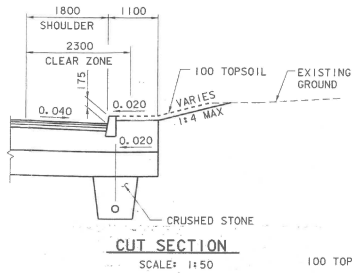
Designed By M.A. COLGAN	Drawn By B.J. MASSE
Checked By S.M. GUNN	Date 6/03
PROJECT COLCHESTER-SOUTH BURLINGTON	PROJECT NO. BRM 5600 (6) S C/2
L.G.C. Info.	Bridge Sheet No. ZD139P1 R.O.W. SHEET 2 OF 21

VANASSE HANGEN BRUSTLIN, INC.

SOUTH APPROACH (SOUTH BURLINGTON)



MATERIAL ITEM	THICKNESS TOLERANCE (mm)
PAVEMENT	±5 (TOTAL)
DENSE GRADED CRUSHED STONE	±30
SAND BORROW	±30
GRANULAR BORROW	±30



**STATE OF VERMONT
AGENCY OF TRANSPORTATION**

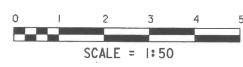
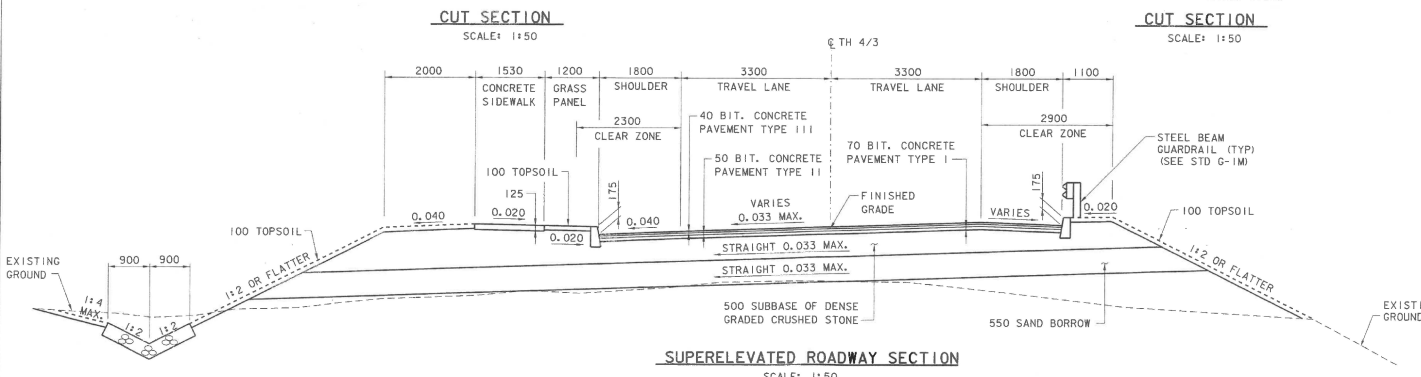
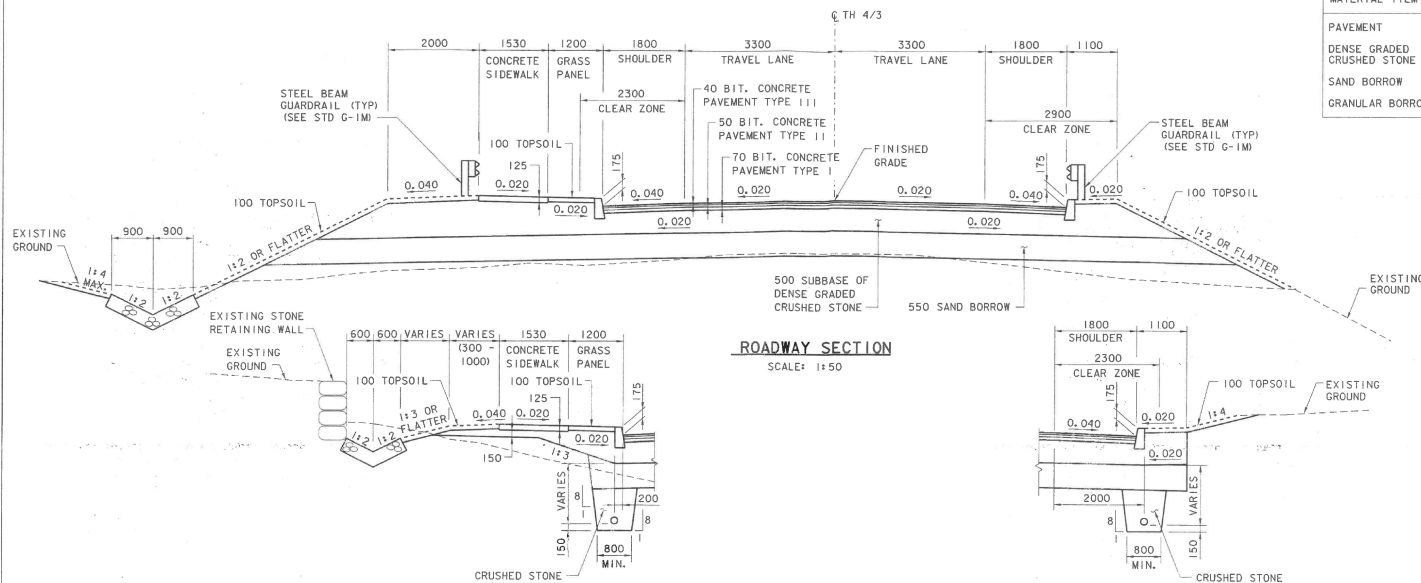
Town Of COLCHESTER-SOUTH BURLINGTON	Bridge No. 6
Highway No. TH 4/3	Log Sta. Surv. Sta.
TH 4/3 OVER WINOOSKI RIVER & N. E. C. R.	
ROADWAY TYPICAL SECTIONS - SOUTH	
Designed By A. J. CRAWFORD	Drawn By R. J. TESTER
Checked By S. M. GUNN	Date 6/03
PROJECT COLCHESTER-SOUTH BURLINGTON	
PROJECT NO. BRM 5600 (6) S C/2	
I.G.C. Info.	
Bridge Sheet No. ZD139TYP1	R. O. W. SHEET 3 OF 21

VANASSE HANGEN BRUSTLIN, INC.

NORTH APPROACH
(COLCHESTER)



MATERIAL ITEM	THICKNESS TOLERANCE (mm)
PAVEMENT	±5 (TOTAL)
DENSE GRADED CRUSHED STONE	±30
SAND BORROW	±30
GRANULAR BORROW	±30



**STATE OF VERMONT
AGENCY OF TRANSPORTATION**

Town Of COLCHESTER-SOUTH BURLINGTON	Bridge No. 6
Highway No. TH 4/3	Log Sta. Surv. Sta.
TH 4/3 OVER WINOOSKI RIVER & N.E.C.R.	
ROADWAY TYPICAL SECTIONS - NORTH	
Designed By A. J. CRAWFORD	Drawn By R. J. TESTER
Checked By S. M. GUNN	Bridge Design Supervisor
Date 6/03	Date 6/03
PROJECT COLCHESTER-SOUTH BURLINGTON	PROJECT NO. BRM 5600 (6) S C/2
L.G.C. Info.	
Bridge Sheet No. ZD139TYP2 R.O.W. SHEET 4 OF 21	

VANASSE HANGEN BRUSTLIN, INC.

DRAINAGE NOTES

- 1 STA 10+055, LT 5.9 m - STA 10+100, LT 4.8 m
150 x 45.9 m UNDERDRAIN
INV. AT STA 10+055 = 77.457
FLUSHING BASIN, +055, LT 5.9 m
- 2 STA 10+055, RT 5.3 m - STA 10+100, RT 4.8 m
150 x 45.3 m UNDERDRAIN
INV. AT STA 10+055 = 77.865
FLUSHING BASIN, +055, RT 5.3 m
- 3 DRIVE CULVERT
STA 10+072, LT 10.8 m - STA 10+087, LT 10.9 m
375 x 15.0 m PCCSP, CAAP, OR CPEP
CSP OR CAAP END SECTION AT STA 10+072, LT 10.8 m
INV. AT STA 10+072 = 78.500
CSP OR CAAP END SECTION AT STA 10+087, LT 10.9 m
INV. AT STA 10+087 = 78.394
- 4 INLET PIPE
STA 10+100, LT 10.4 m - LT 4.8 m
450 x 5.3 m PCCSP, CAAP, OR CPEP
CSP OR CAAP END SECTION AT STA 10+100, LT 10.4 m
INV. AT STA 10+100 = 78.170
- 5 STA 10+100, RT 4.8 m - LT 4.8 m
350 x 575 x 9.0 m RCP (111) ELLIPTICAL PIPE (NO OPTION)
RC - DI WITH GRATE, TYPE E AT STA 10+100, RT 4.8 m
RIM EL. = 79.012
INV. IN (S) = 77.640 (150 UND)
INV. OUT (W) = 77.564
- 6 STA 10+100, LT 4.8 m - STA 10+168, LT 4.8 m
450 x 67.4 m RCP (111), CAAP, PCCSP, OR CPEP (SL)
RC - DI WITH GRATE, TYPE E AT STA 10+100, LT 4.8 m
RIM EL. = 79.012
INV. IN (S) = 77.158 (150 UND)
INV. IN (W) = 77.610
INV. IN (E) = 77.480
INV. OUT (N) = 76.966
- 7 STA 10+102, RT 5.3 m - STA 10+147, RT 8.1 m
150 x 46.3 m UNDERDRAIN
INV. AT STA 10+102 = 76.982
FLUSHING BASIN, +102, RT 5.3 m
- 8 STA 10+102, LT 5.9 m - STA 10+168, LT 4.8 m
150 x 66.9 m UNDERDRAIN
INV. AT STA 10+102 = 77.109
FLUSHING BASIN, +102, LT 5.9 m
- 9 STA 10+168, RT 4.8 m - LT 4.8 m
450 x 9.0 m RCP (111), CAAP, PCCSP, OR CPEP (SL)
RC - DI WITH GRATE, TYPE E AT STA 10+168, RT 4.8 m
RIM EL. = 78.045
INV. IN (S) = 76.552
INV. OUT (W) = 76.521
- 10 STA 10+147, RT 8.1 m - STA 10+168, RT 4.8 m
450 x 20.4 m RCP (111), CAAP, PCCSP, OR CPEP (SL)
RC - DI WITH GRATE, TYPE E AT STA 10+147, RT 8.1 m
RIM EL. = 78.175
INV. IN (S) = 76.876 (150 UND)
INV. OUT (N) = 76.803
- 11 STA 10+178, LT 5.9 m - STA 10+220, LT 4.8 m
150 x 41.3 m UNDERDRAIN
INV. AT STA 10+178 = 76.199
FLUSHING BASIN, +178, LT 5.9 m
- 12 STA 10+170, RT 5.3 m - STA 10+220, RT 4.8 m
150 x 51.1 m UNDERDRAIN
INV. AT STA 10+170 = 76.233
FLUSHING BASIN, +170, RT 5.3 m

- 13 STA 10+168, LT 4.8 m - STA 10+196, LT 10.1 m
450 x 27.1 m RCP (111), CAAP, PCCSP, OR CPEP (SL)
RC - DI WITH GRATE, TYPE E AT STA 10+168, LT 4.8 m
RIM EL. = 77.992
INV. IN (W) = 76.529 (150 UND.)
INV. IN (S) = 76.364
INV. IN (E) = 76.364
INV. OUT (N) = 76.288
- 14 STA 10+196, LT 10.1 m - STA 10+211, LT 11.2 m
450 x 13.4 m RCP (111), CAAP, PCCSP, OR CPEP (SL)
RC - CB WITH GRATE, TYPE A AT
STA 10+196, LT 10.1 m
RIM EL. = 77.333
INV. IN (S) = 75.806
INV. OUT (N) = 75.775
- 15 STA 10+211, LT 11.2 m - STA 10+272, LT 14.3 m
450 x 59.0 m RCP (111), CAAP, PCCSP, OR CPEP (SL)
RC - CB WITH GRATE, TYPE D AT
STA 10+211, LT 11.2 m
RIM EL. = 77.159
INV. IN (S) = 75.641
INV. OUT (N) = 75.610
- 16 STA 10+193.4, LT 4.8 m - STA 10+220, LT 4.8 m
450 x 25.7 m RCP (111), CAAP, PCCSP, OR CPEP (SL)
RC - DI WITH GRATE, TYPE E AT
STA 10+193.4, LT 4.8 m
RIM EL. = 77.606
INV. OUT (N) = 75.742
- 17 STA 10+270, LT 5.3 m - STA 10+220, LT 4.8 m
150 x 53.6 m UNDERDRAIN
INV. AT STA 10+270 = 76.471
FLUSHING BASIN, +270, LT 5.3 m
- 18 STA 10+220, RT 4.8 m - LT 4.8 m
450 x 9.0 m RCP (111), CAAP, PCCSP, OR CPEP (SL)
RC - DI WITH GRATE, TYPE D AT
STA 10+220, RT 4.8 m
RIM EL. = 77.510
INV. IN (N) = 75.966 (150 UND)
INV. IN (S) = 75.966 (150 UND)
INV. OUT (W) = 75.681
- 19 STA 10+270, RT 5.3 m - STA 10+220, RT 4.8 m
150 x 50.2 m UNDERDRAIN
INV. AT STA 10+270 = 76.300
FLUSHING BASIN, +270, RT 5.3 m
- 20 STA 10+220, LT 4.8 m - STA 10+256.2, LT 8.5 m
450 x 35.1 m RCP (111), CAAP, PCCSP, OR CPEP (SL)
RC - DI WITH GRATE, TYPE D AT
STA 10+220, LT 4.8 m
RIM EL. = 77.354
INV. IN (S) = 75.498
INV. IN (W) = 75.776 (150 UND.)
INV. IN (N) = 75.776 (150 UND.)
INV. IN (E) = 75.597
INV. OUT (N) = 75.467
- 21 STA 10+301, RT 5.9 m - STA 10+272, RT 4.8 m
150 x 29.3 m UNDERDRAIN
INV. AT STA 10+301 = 77.657
FLUSHING BASIN, +301, RT 5.9 m
- 22 STA 10+303, RT 4.8 m - STA 10+272, RT 4.8 m
450 x 30.1 m RCP (111), CAAP, PCCSP, OR CPEP (SL)
RC - DI WITH GRATE, TYPE E AT
STA 10+303, RT 4.8 m
RIM EL. = 79.747
INV. IN (W) = 77.750
INV. OUT (S) = 77.719
- 23 STA 10+303, LT 4.8 m - RT 4.8 m
450 x 9.0 m RCP (111), CAAP, PCCSP, OR CPEP (SL)
RC - DI WITH GRATE, TYPE E AT STA 10+303, LT 4.8 m
RIM EL. = 79.747
INV. OUT (E) = 79.818

- 24 STA 10+272, RT 4.8 m - LT 5.0 m
450 x 8.9 m RCP (111), CAAP, PCCSP, OR CPEP (SL)
RC - CB WITH GRATE, TYPE E AT STA 10+272, RT 4.8 m
RIM EL. = 78.376
INV. IN (E) = 76.652 (150 UND.)
INV. IN (N) = 76.527
INV. OUT (W) = 76.310
- 25 STA 10+301, LT 5.3 m - STA 10+272, LT 5.0 m
150 x 29.0 m UNDERDRAIN
INV. AT STA 10+301 = 77.657
FLUSHING BASIN, +301, LT 5.3 m
- 26 STA 10+256.2, LT 8.5 m - STA 10+272, LT 14.3 m
450 x 15.6 m CONCRETE ENCASED RCP (111),
OR "HEAVY DUTY" CPEP (SL)
RC - CB WITH GRATE, TYPE D AT STA 10+256.2, LT 8.5 m
RIM EL. = 77.722
INV. IN (S) = 75.119
INV. OUT (N) = 74.357
- 27 STA 10+272, LT 5.0 m - LT 14.3 m
450 x 8.4 m RCP (111), CAAP, PCCSP, OR CPEP (SL)
RC - DI WITH GRATE, TYPE E AT STA 10+272, LT 5.0 m
RIM EL. = 78.368
INV. IN (E) = 76.226
INV. IN (N) = 76.519 (150 UND.)
INV. OUT (W) = 76.195
- 28 STA 10+272, LT 14.3 m - STA 10+276, LT 14.3 m
600 x 2.8 m RCP (111), CAAP, PCCSP, OR CPEP (SL)
RC - MH WITH COVER AT STA 10+272, LT 14.3 m
RIM EL. = 78.190
INV. IN (S) = 75.020
INV. IN (SE) = 74.170
INV. IN (E) = 76.114
INV. OUT (N) = 74.094
- 29 STA 10+276, LT 14.3 m - STA 10+296, LT 16.4 m
600 x 13.3 m RCP (111), CAAP, PCCSP, OR CPEP (SL)
PC - STORMCEPTOR UNIT (STC2400) OR EQUAL AT
STA 10+276, LT 14.3 m
RIM EL. = 78.160
INV. IN (S) = 74.038
INV. OUT (N) = 74.007
- 30 STA 10+296, LT 16.4 m - STA 10+322, LT 18.3 m
600 x 25.6 m RCP (111) (NO PIPE OPTION)
RC - DI (750 MIN.) WITH GRATE, TYPE A AT
STA 10+296, LT 16.4 m
RIM EL. = 77.372
INV. IN (S) = 73.851
INV. OUT (N) = 73.820
RC HEADWALL AT STA 10+322, LT 18.3 m
INV. AT STA 10+322 = 73.515
IF OUTLET IS IN BEDROCK, CONST. 1200 WIDE CHANNEL WITH
4V:1H SIDESLOPES TO POINT WHERE LEDGE DROPS OFF TO RIVER.

IF OUTLET IS ABOVE BEDROCK, CONST. 3600 WIDE X 1200 DEEP
STONE FILLED PAD, TYPE II AT OUTLET AND CONST. 1800 WIDE
CHANNEL WITH 1:2 SIDESLOPES TO POINT WHERE CHANNEL
DROPS OFF TO RIVER.
- 31 STA 10+423, LT 17.0 m - RT 40.0 m
450 x 26.4 m PCCSP, CAAP OR CPEP
PROPOSED PIPE SHALL BE PLACED THROUGH EXISTING
BINWALL AT LT 10.1 m. ALL COSTS INCIDENTAL TO PIPE.
RC - HEADWALL AT STA 10+423, LT 17.0 m
INV. IN AT STA 10+423, LT = 81.025

- 32 STA 10+540, LT 16.4 m - STA 10+416, LT 16.7 m
1800 WIDE X 300 DEEP STONE FILL DITCH, TYPE I
EL. AT STA 10+416 = 81.265
LOW POINT IN DITCH AT STA 10+423, LT 18.2 m
EL. AT STA 10+423 = 81.133
- 33 STA 10+590, LT 10.1 m - STA 10+540, LT 16.4 m
1200 WIDE X 300 DEEP STONE FILL DITCH, TYPE I
EL. AT STA 10+590 = 95.711
EL. AT STA 10+540 = 90.547
- 34 STA 10+423, RT 10.0 m - STA 10+420, RT 24.2 m
450 x 13.9 m PCCSP, CAAP, OR CPEP
RC - 3.0 m DROP MH WITH COVER AT STA 10+420, RT 10.0 m
RIM EL. = 83.444
INV. IN (W) = 78.643
INV. IN (N) = 81.646
INV. OUT (E) = 78.567
CSP OR CAAP END SECTION AT STA 10+420, RT 24.2 m
INV. AT STA 10+420 = 75.793
5000 WIDE X 1200 DEEP STONE FILL PAD, TYPE II AT OUTLET
(SEE SWALE DETAIL "B")
- 35 STA 10+425, RT 7.3 m - STA 10+423, RT 10.0 m
450 x 1.7 m PCCSP, CAAP, OR CPEP
PC - STORMCEPTOR UNIT (STC1800) OR EQUAL AT
STA 10+425, RT 7.3 m
RIM EL. = 84.884
INV. IN (N) = 81.749
INV. OUT (S) = 81.718
- 36 STA 10+428, RT 4.8 m - STA 10+425, RT 7.3 m
450 x 2.1 m PCCSP, CAAP, OR CPEP
RC - CB WITH GRATE, TYPE E AT STA 10+428, RT 4.8 m
RIM EL. = 85.372
INV. IN (W) = 81.939
INV. OUT (S) = 81.863
- 37 STA 10+428, LT 4.8 m - RT 4.8 m
450 x 8.4 m PCCSP, CAAP, OR CPEP
RC - CB WITH GRATE, TYPE E AT STA 10+428, LT 4.8 m
RIM EL. = 85.372
INV. IN (S) = 82.267
INV. IN (N) = 83.105
INV. OUT (E) = 82.191
- 38 STA 10+409, LT 4.8 m - STA 10+428, LT 4.8 m
450 x 18.1 m PCCSP, CAAP, OR CPEP
RC - DI WITH GRATE, TYPE E AT STA 10+409, LT 4.8 m
RIM EL. = 84.517
INV. IN (E) = 82.719
INV. OUT (N) = 82.668
- 39 STA 10+409, RT 4.8 m - LT 4.8 m
450 x 9.0 m PCCSP, CAAP, OR CPEP
RC - DI WITH GRATE, TYPE E AT STA 10+409, RT 4.8 m
RIM EL. = 84.517
INV. OUT (W) = 82.884

GENERAL DRAINAGE NOTES

1. THE CONTRACTOR SHALL VERIFY THE LOCATION AND DEPTH OF ALL UNDERGROUND UTILITIES PRIOR TO STORM DRAIN CONSTRUCTION. ANY CONFLICTS BETWEEN THE ACTUAL LOCATION AND DESIGN SHALL BE REPORTED TO THE RESIDENT ENGINEER FOR RESOLUTION.
2. EXTRUDED POLYSTYRENE INSULATION BOARD (50 MIN. IN.) SHALL BE INSTALLED BETWEEN STORM DRAIN AND WATERLINE IF CLEARANCE IS LESS THAN 450 mm. COST SHALL BE INCIDENTAL TO PIPE COST.

STATE OF VERMONT AGENCY OF TRANSPORTATION			
Town Of	COLCHESTER-SOUTH BURLINGTON	Bridge No.	6
Highway No.	TH 4/3	Log Sta.	
		Surv. Sta.	
TH 4/3 OVER WINDOSKI RIVER & N.E.C.R.			
DRAINAGE & SEWER NOTES/DETAILS (1 OF 2)			
Designed By	S.W. BEKIER	Drawn By	C.S. MERCER
Checked By	Date	Bridge Design Supervisor	
D.M. PECK	6/03	S.M. GUNN	Date 6/03
PROJECT	COLCHESTER-SOUTH BURLINGTON	PROJECT NO.	BRM 5600 (6) S/C/2
I.G.C. Info.			
Bridge Sheet No.	ZD139DR1	R.O.W. SHEET	5 OF 21

DATUM
VERTICAL NAVD 88
HORIZONTAL NAD 83 (92)

VANASSE HANGEN BRUSTLIN, INC.

DRAINAGE NOTES (CONT'D)

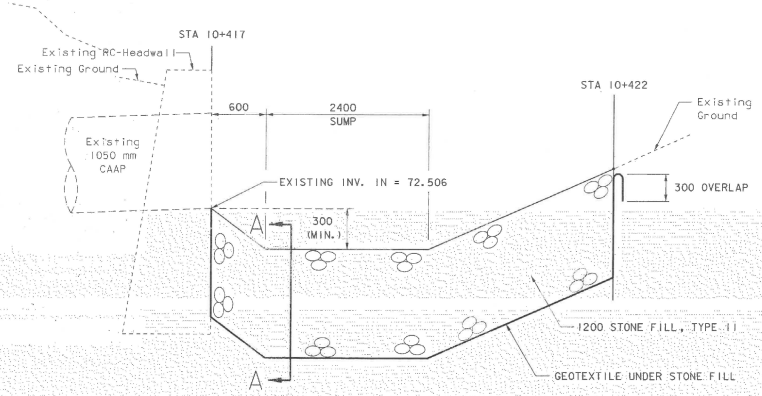
- 40 STA 10+500, LT 4.8 m - STA 10+428, LT 4.8 m
450 x 69.6 m PCCSP, CAAP, OR CPEP
RC - CB WITH GRATE, TYPE E AT STA 10+500, LT 4.8 m
RIM EL. = 89.969
INV. IN (E) = 88.111
INV. IN (N) = 88.111
INV. OUT (S) = 88.035
- 41 STA 10+500, RT 4.8 m - LT 4.8 m
450 x 8.7 m PCCSP, CAAP, OR CPEP
RC - DI WITH GRATE, TYPE E AT
STA 10+500, RT 4.8 m
RIM EL. = 90.192
INV. OUT (W) = 88.363
- 42 STA 10+474, LT 12.6 m - LT 15.6 m
REMOVE EXISTING CB
REMOVE EXISTING 305 x 2.4 m PIPE
- 43 STA 10+566, LT 4.8 m - STA 10+500, LT 4.8 m
450 x 63.3 m PCCSP, CAAP, OR CPEP
RC - DI WITH GRATE, TYPE E AT STA 10+566, LT 4.8 m
RIM EL. = 94.987
INV. IN (N) = 92.987 (150 UND)
INV. IN (E) = 92.930
INV. IN (S) = 92.627
INV. OUT (S) = 92.551
- 44 STA 10+541, LT 4.7 m - STA 10+543, LT 6.7 m
REMOVE EXISTING CB
REMOVE EXISTING 305 x 2.2 m PIPE
- 45 STA 10+566, RT 4.8 m - LT 4.8 m
450 x 9.0 m RCP (111), CAAP, PCCSP OR CPEP (SL)
RC - DI WITH GRATE, TYPE E AT STA 10+566, RT 4.8 m
RIM EL. = 94.955
INV. IN (N) = 92.955 (150 UND)
INV. OUT (W) = 92.879
- 46 STA 10+620, LT 5.5 m - STA 10+566, LT 4.8 m
450 x 54.4 m RCP (111), CAAP, PCCSP, OR CPEP (SL)
RC - DI WITH GRATE, TYPE E AT STA 10+620, LT 5.5 m
RIM EL. = 96.440
INV. IN (E) = 94.626
INV. OUT (S) = 94.950
- 47 STA 10+615, LT 5.3 m - STA 10+566, LT 4.8 m
150 x 49.9 m UNDERDRAIN
INV. AT STA 10+615 = 94.418
FLUSHING BASIN, +615, RT 5.3 m
- 48 STA 10+620, RT 5.3 m - STA 10+566, RT 4.8 m
150 x 53.9 m UNDERDRAIN
INV. AT STA 10+620 = 94.468
FLUSHING BASIN, +620, RT 5.3 m
- 49 STA 10+622, RT 4.8 m - 10+620, LT 5.5 m
450 x 9.9 m RCP (111), CAAP, PCCSP, OR CPEP (SL)
RC - DI WITH GRATE, TYPE E AT STA 10+622, RT 4.8 m
RIM EL. = 96.488
INV. OUT (W) = 94.812

SEWER NOTES

- S1 STA 10+387, RT 22.6 m (BY OTHERS)
PRC - SMH WITH COVER, CONST. OVER EXISTING SEWER
RIM EL. = 73.90 +/-
EXIST. INV. IN (W) = 71.57 +/-
INV. IN (N) = 71.642
EXIST. INV. OUT (E) = 71.55 +/-
CONTRACTOR TO VERIFY INVERT OF EXISTING SEWER
- S2 STA 10+411, RT 18.2 m - STA 10+387, RT 22.6 m (BY OTHERS)
200 x 23.1 m DI PIPE WITH 450 x 17.7 m STEEL SLEEVE
PRC - DROP SMH WITH COVER AT STA 10+411, RT 18.2 m
RIM EL. = 76.00 +/-
INV. AT DROP (N) = 74.727
INV. IN (N) = 72.898
INV. OUT = 72.867
- S3 STA 10+496, RT 4.2 m - STA 10+411, RT 18.2 m
200 x 86.1 m PVC SDR26 WITH 450 x 6.1 m STEEL SLEEVE
PRC - SMH WITH COVER AT STA 10+496, RT 4.2 m
RIM EL. = 89.906
INV. IN (N) = 86.056
INV. OUT (S) = 86.025
- S4 STA 10+534, RT 4.2 m - STA 10+496, RT 4.2 m
200 x 37.6 m PVC SDR26 WITH 450 x 6.1 m STEEL SLEEVE
PRC - SMH WITH COVER AT STA 10+534, RT 4.2 m
RIM EL. = 92.946
INV. IN (N) = 88.834
INV. OUT (S) = 88.803
- S5 STA 10+553.9, RT 4.2 m - STA 10+534, RT 4.2 m
200 x 19.1 m PVC SDR35
PRC - SMH WITH COVER AT STA 10+553.9, RT 4.2 m
RIM EL. = 94.384
INV. IN (N) = 89.803
INV. IN (W) = 89.803
INV. OUT (S) = 89.772
- S6 STA 10+572, RT 4.2 m - STA 10+553.9, RT 4.2 m
200 x 17.2 m PVC SDR35
PRC - SMH WITH COVER AT STA 10+572, RT 4.2 m
RIM EL. = 95.297
INV. IN (N) = 90.588
INV. OUT (S) = 90.557
- S7 STA 10+567.2, LT 8.0 m - STA 10+553.9, RT 4.2 m
150 x 16.7 m PVC SDR35
PRC-SMH WITH COVER AT STA 10+567.2, LT 8.0 m
RIM EL. = 94.890
INV. IN (W) = 90.603
INV. OUT (E) = 90.572
- S8 STA 10+608, LT 6.0 m - STA 10+572, RT 4.2 m
200 x 36.5 m PVC SDR35
INV. OUT (S) = 90.953
REMOVE AND RESET FRAME AND COVER OF EXISTING SEWER MANHOLE
AT STA. 10+608, LT 6.0 m
RIM EL. = 96.322
REMOVE AND RESET BRICK CHANNEL TO PROPOSED OUTLET PIPE LOCATION.

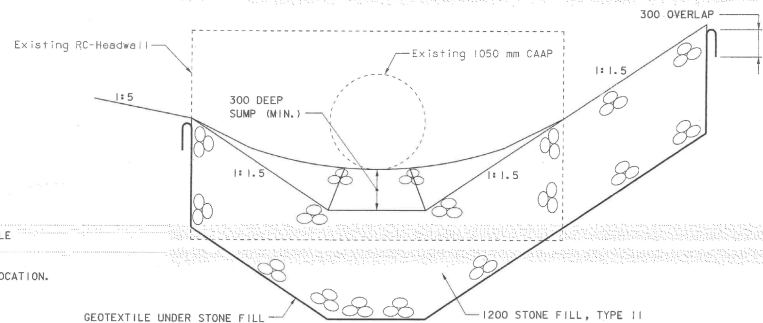
GENERAL SEWER NOTES

1. THE STEEL SLEEVE UNDER THE RAILROAD TRACKS SHALL BE JACKED. OPEN CUTS ARE PROHIBITED.
2. PRIOR TO THE INSTALLATION OF THE STEEL SLEEVES, THE CONTRACTOR SHALL VERIFY THE LOCATION OF THE EXISTING VERTICAL FACES OF QUARRY.
3. THE CONTRACTOR SHALL VERIFY THE LOCATION AND INVERT ELEVATION OF THE EXISTING SEWER LATERAL FROM SALMON HALL AND IS RESPONSIBLE FOR FURNISHING ALL EQUIPMENT, MATERIALS AND LABOR NECESSARY TO MAKE A SECURE WATER-TIGHT CONNECTION TO THE EXISTING SEWER LATERAL. ANY CONFLICTS BETWEEN THE ACTUAL LOCATION AND DESIGN SHALL BE REPORTED TO THE RESIDENT ENGINEER FOR RESOLUTION.
4. THE CONTRACTOR SHALL CORE THROUGH THE EXISTING SEWER MANHOLE WALL SECURING THE PROPOSED OUTLET PIPE TO THE MANHOLE USING NON-SHRINK GROUT. AFTER COMPLETING WORK ON THE EXISTING SEWER MANHOLE THE CONTRACTOR SHALL PLUG AND ABANDON THE EXISTING OUTLET PIPE USING BRICK AND MORTAR.



SWALE DETAIL "B"

NOT TO SCALE
STA 10+417, RT - STA 10+422, RT
NOTE: CONTRACTOR SHALL ENSURE THAT PLACEMENT OF STONE FILL WILL NOT UNDERMINE EXISTING HEADWALL.



SECTION A-A

NOT TO SCALE

DATUM
VERTICAL NAVD 88
HORIZONTAL NAD 83 (92)

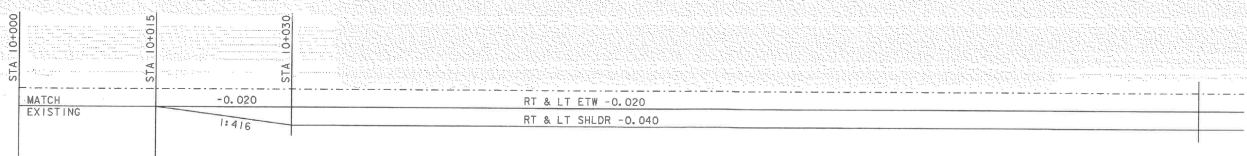
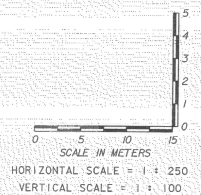
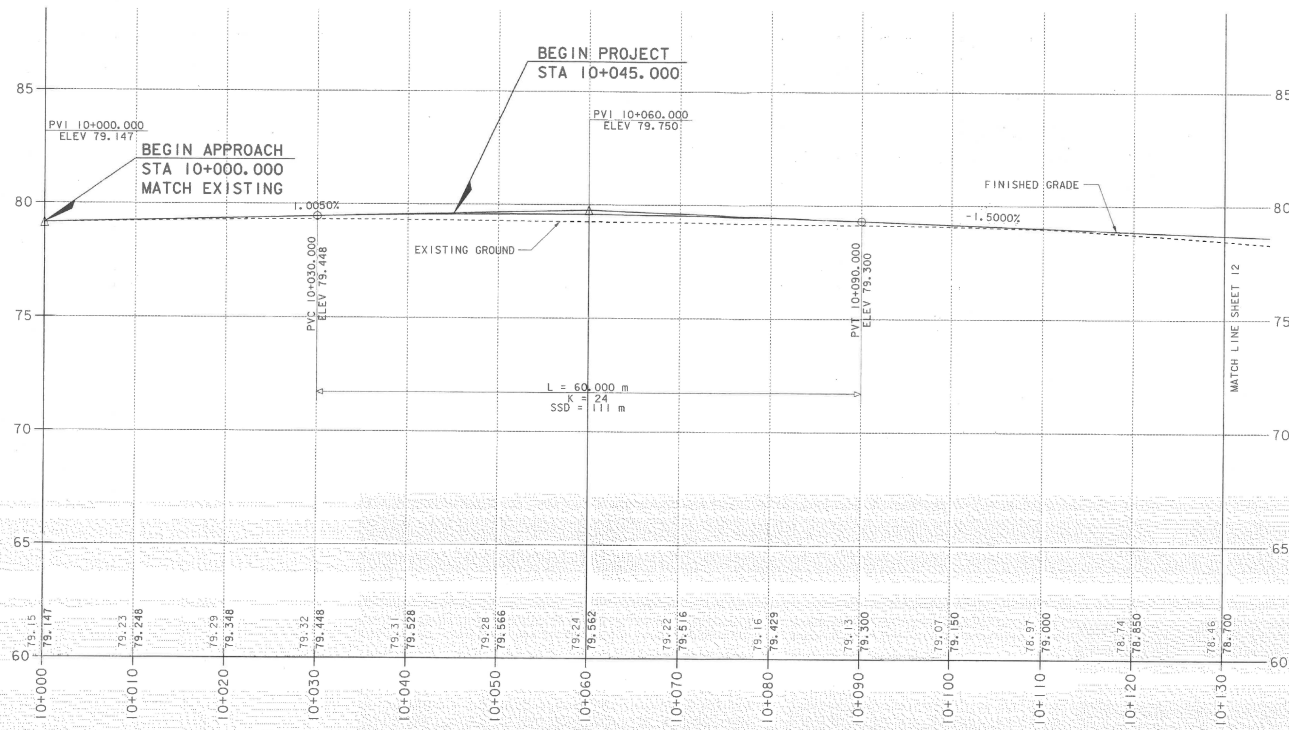
VANASSE HANGEN BRUSTLIN, INC.

**STATE OF VERMONT
AGENCY OF TRANSPORTATION**

Town Of COLCHESTER-SOUTH BURLINGTON	Bridge No. 6
Highway No. TH 4/3	Log Sta. Surv. Sta.
TH 4/3 OVER WINOOSKI RIVER & N.E. C.R.	

DRAINAGE & SEWER NOTES/DETAILS (2 OF 2)

Designed By S. W. BEKIER	Drawn By C. S. MERCER
Checked By D. M. PECK	Bridge Design Supervisor S. M. GUNN
Date 6/03	Date 6/03
PROJECT COLCHESTER-SOUTH BURLINGTON	PROJECT NO. BRM 5600 (6) S C/2
I.G.C. Info.	
Bridge Sheet No. ZD139DR2	R.O.W. SHEET 6 OF 21

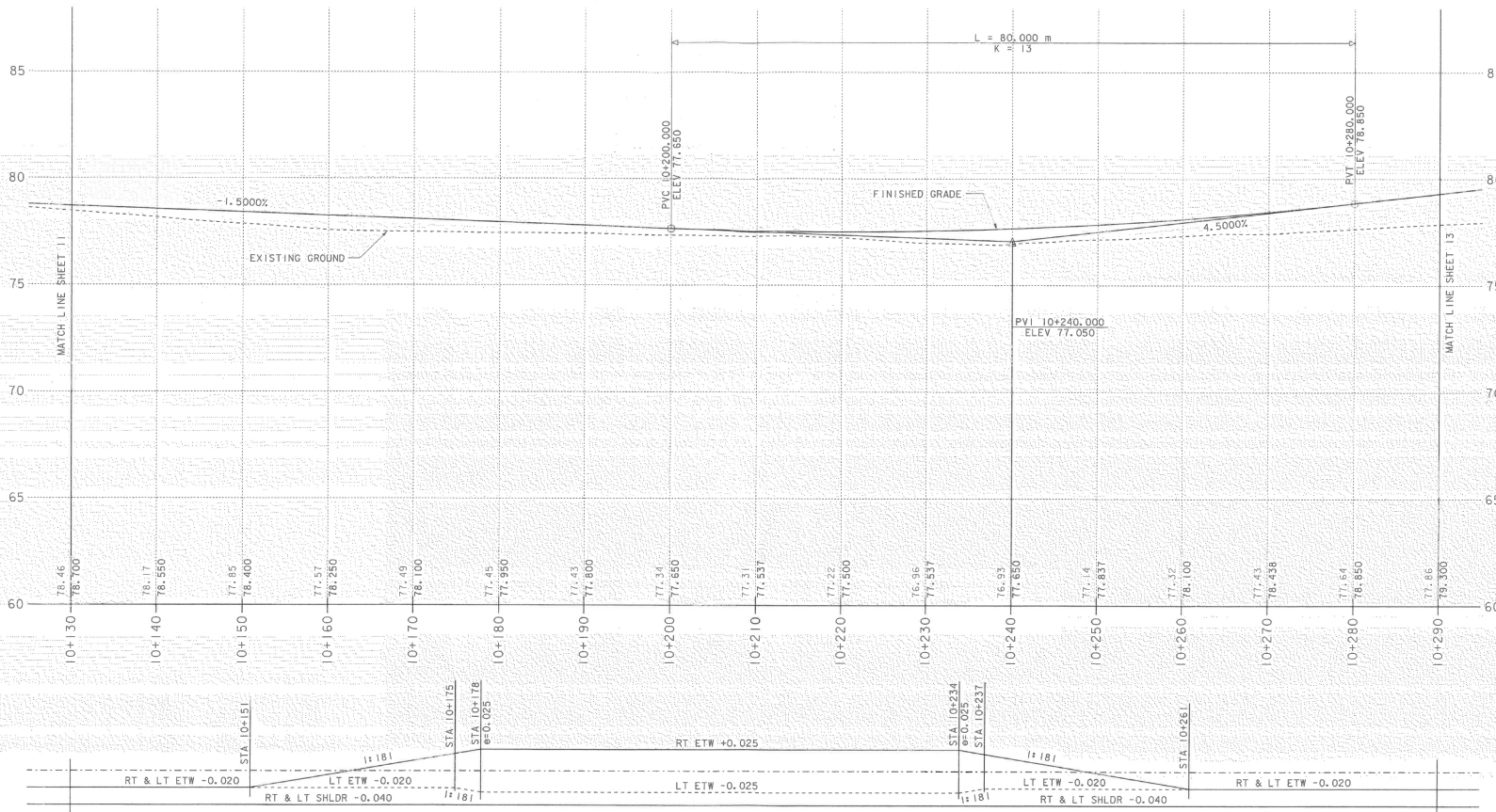


PROFILE & BANKING DIAGRAM

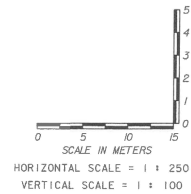
DATUM
VERTICAL NAVD_88
HORIZONTAL NAD_83 (92)

VANASSE HANGEN BRUSTLIN, INC.

STATE OF VERMONT AGENCY OF TRANSPORTATION	
Town Of COLCHESTER-SOUTH BURLINGTON	Bridge No. 6
Highway No. TH 4/3	Log. Sta. Surv. Sta.
TH 4/3 OVER WINOOSKI RIVER & N.E.C.R.	
PROFILE (1 OF 5)	
Designed By A. J. CRAWFORD	Drawn By C. L. CILLEY
Checked By S. M. GUNN	Bridge Design Supervisor Date 6/03
PROJECT COLCHESTER-SOUTH BURLINGTON	PROJECT NO. BRM 5600 (6) S C/2
I.G.C. Info.	
Bridge Sheet No. ZD139PRI	R. O. W. SHEET 7 OF 21

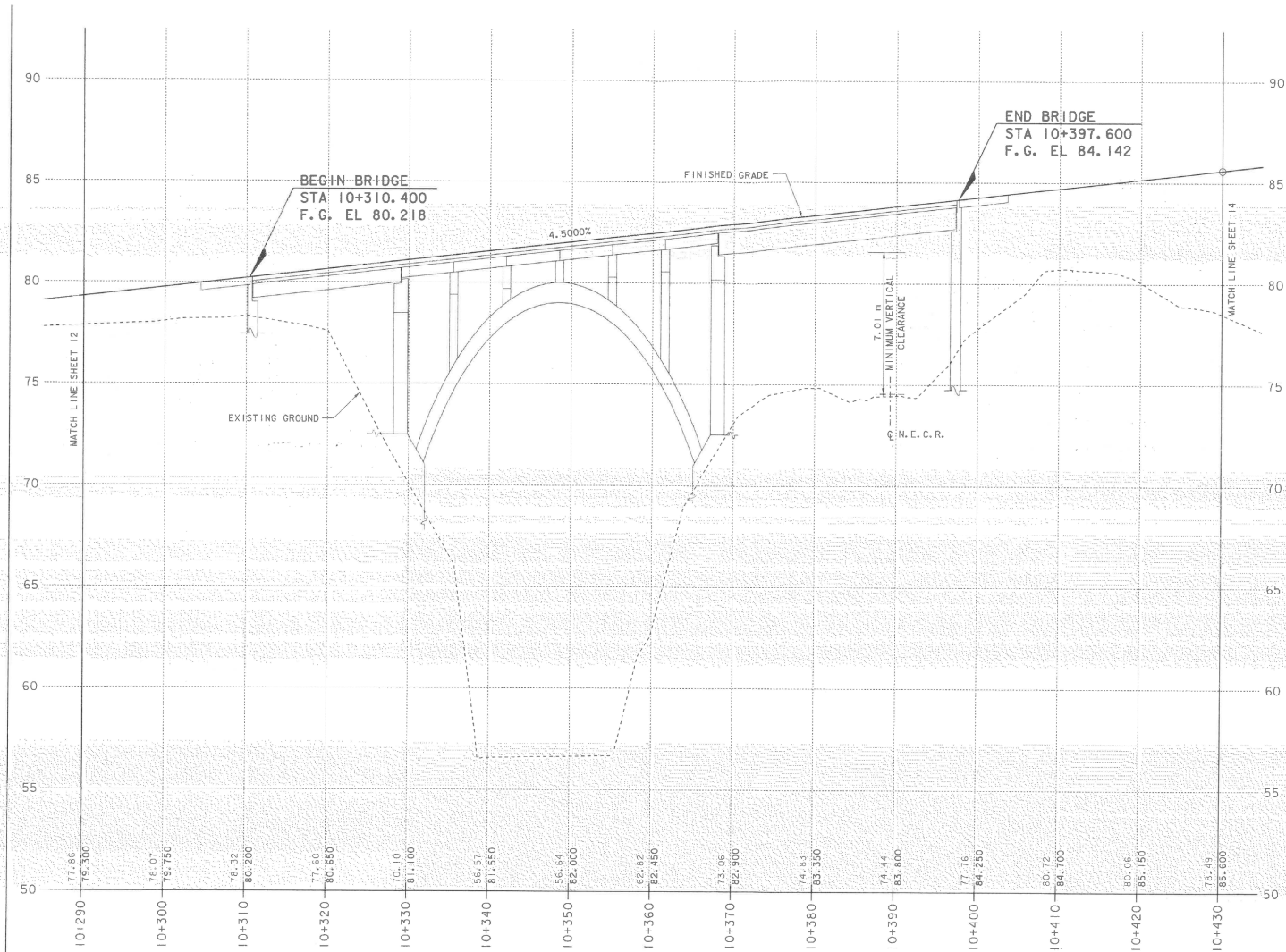


PROFILE & BANKING DIAGRAM



DATUM
 VERTICAL NAVD 88
 HORIZONTAL NAD 83 (92)

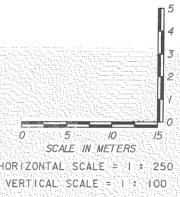
STATE OF VERMONT AGENCY OF TRANSPORTATION			
Town Of COLCHESTER-SOUTH BURLINGTON	Bridge No. 6	Log Sta.	
Highway No. TH 4/3	Surv. Sta.		
TH 4/3 OVER WINOOSKI RIVER & N.E.C.R.			
PROFILE (2 OF 5)			
Designed By A. J. CRAWFORD	Date 6/03	Drawn By C. L. CILLEY	Bridge Design Supervisor
Checked By S. M. GUNN	Date 6/03	S. M. GUNN	Date 6/03
PROJECT COLCHESTER-SOUTH BURLINGTON	PROJECT NO. BRM 5600 (6) S C/2		
I.G.C. info.			
Bridge Sheet No. ZD139PR2	R. O. W.	SHEET 8	OF 21



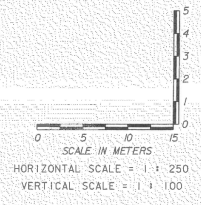
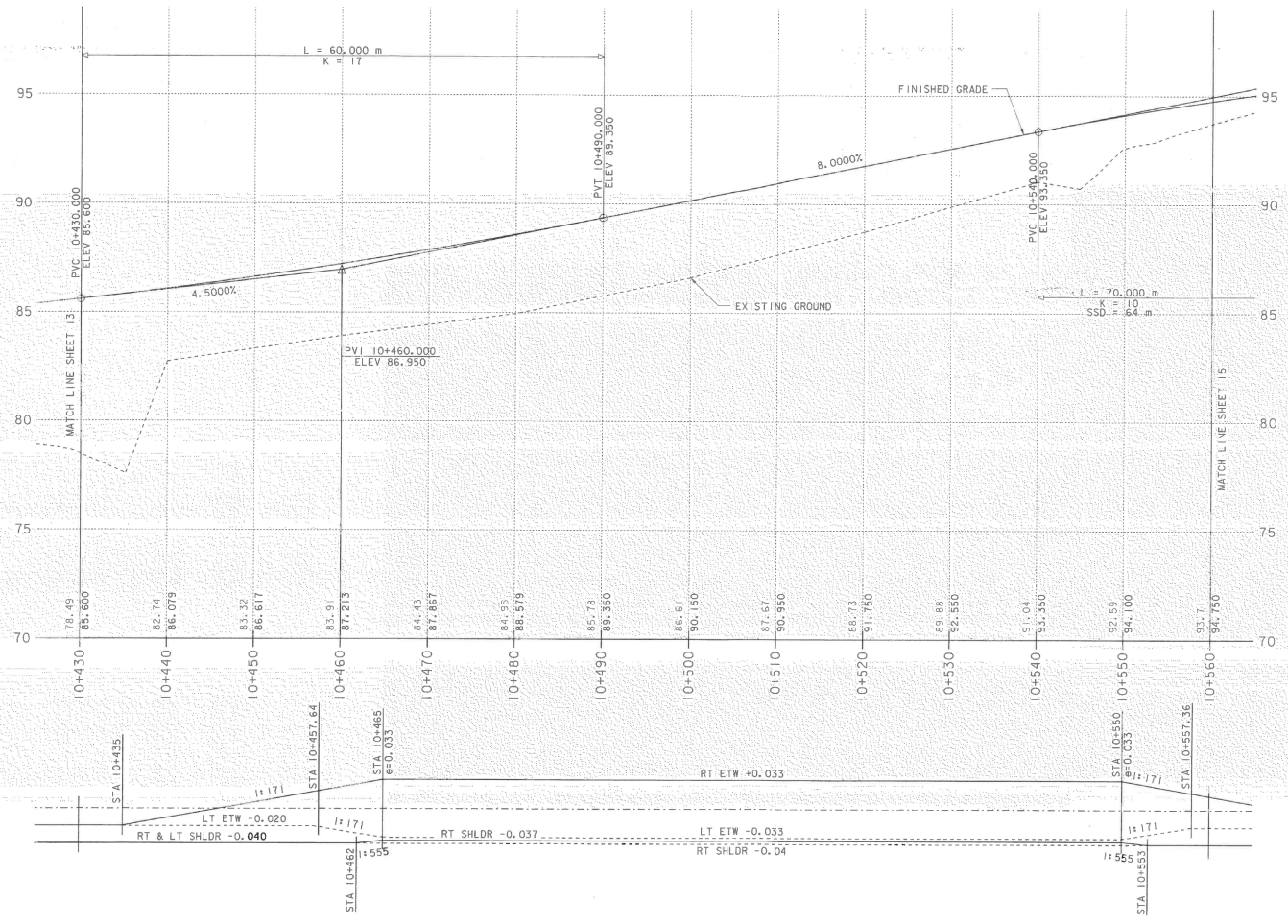
DATUM
VERTICAL_NAYD_88_
HORIZONTAL_NAD_83_(92)

PROFILE & BANKING DIAGRAM

VANASSE HANGEN BRUSTLIN, INC.



STATE OF VERMONT AGENCY OF TRANSPORTATION			
Town Of	COLCHESTER-SOUTH BURLINGTON	Bridge No.	6
Highway No.	TH 4/3	Log Sta.	
		Surv. Sta.	
TH 4/3 OVER WINDOSKI RIVER & N.E.C.R.			
PROFILE (5 OF 5)			
Designed By	A. J. CRAWFORD	Drawn By	C. L. CILLEY
Checked By	S. M. GUNN	Date	6/03
		Bridge Design Supervisor	S. M. GUNN
		Date	6/03
PROJECT	COLCHESTER-SOUTH BURLINGTON	PROJECT NO.	BRM 5600 (6) S C/2
I.G.C. Info.			
Bridge Sheet No.	ZD139PR3	R.O.W.	SHEET 9 OF 21

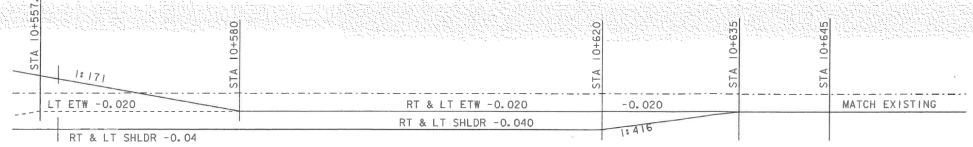
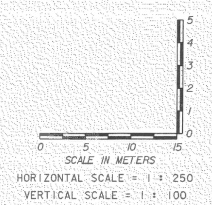
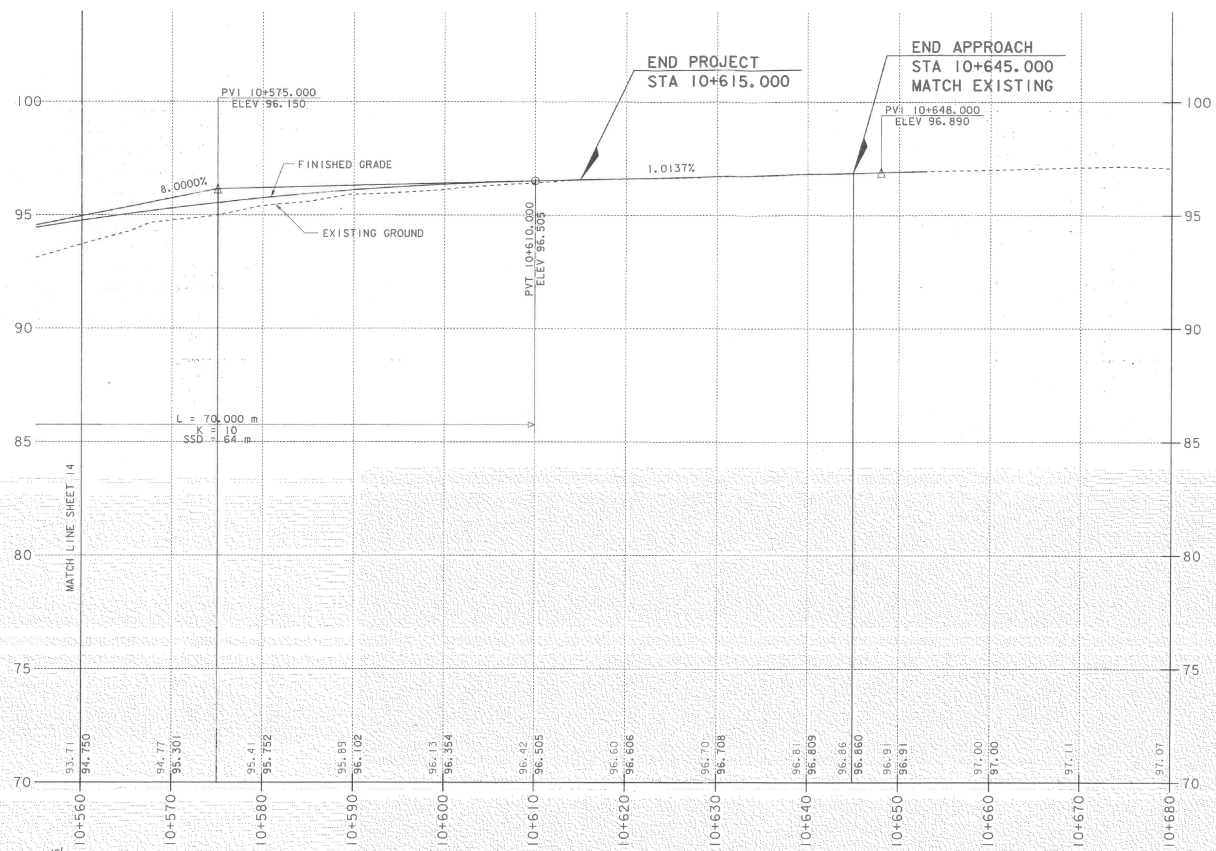


PROFILE & BANKING DIAGRAM

STATE OF VERMONT AGENCY OF TRANSPORTATION			
Town Of COLCHESTER-SOUTH BURLINGTON	Bridge No. 6	Checked By S. M. GUNN	Date 6/03
Highway No. TH 4/3	Log Sta. Surv. Sta.	Drawn By C. L. CILLEY	Date 6/03
TH 4/3 OVER WINDSKI RIVER & N. E. C. R.			
PROFILE (4 OF 5)			
PROJECT COLCHESTER-SOUTH BURLINGTON	PROJECT NO. BRM 5600 (6) S C/2	Checked By S. M. GUNN	Date 6/03
L&C info.			
Bridge Sheet No. ZD139R4 R.O.W. SHEET 10 OF 21			

DATUM
 VERTICAL NAVD 88
 HORIZONTAL NAD 83 (192)

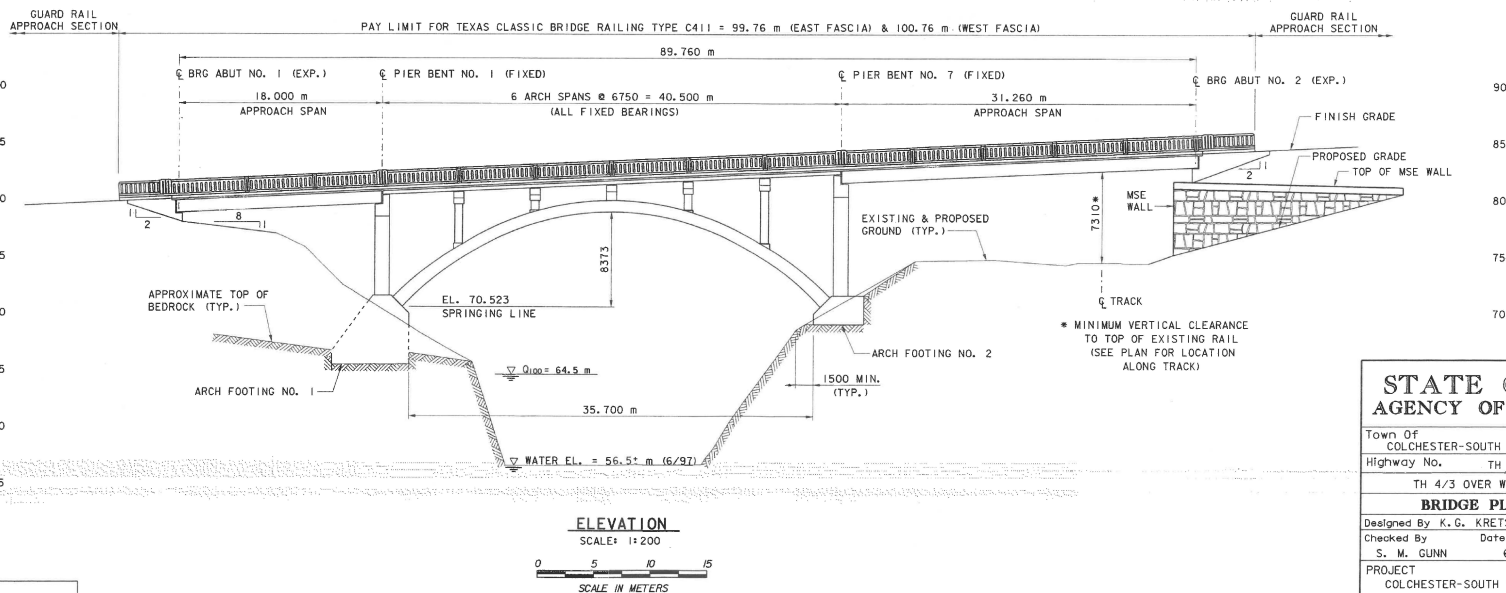
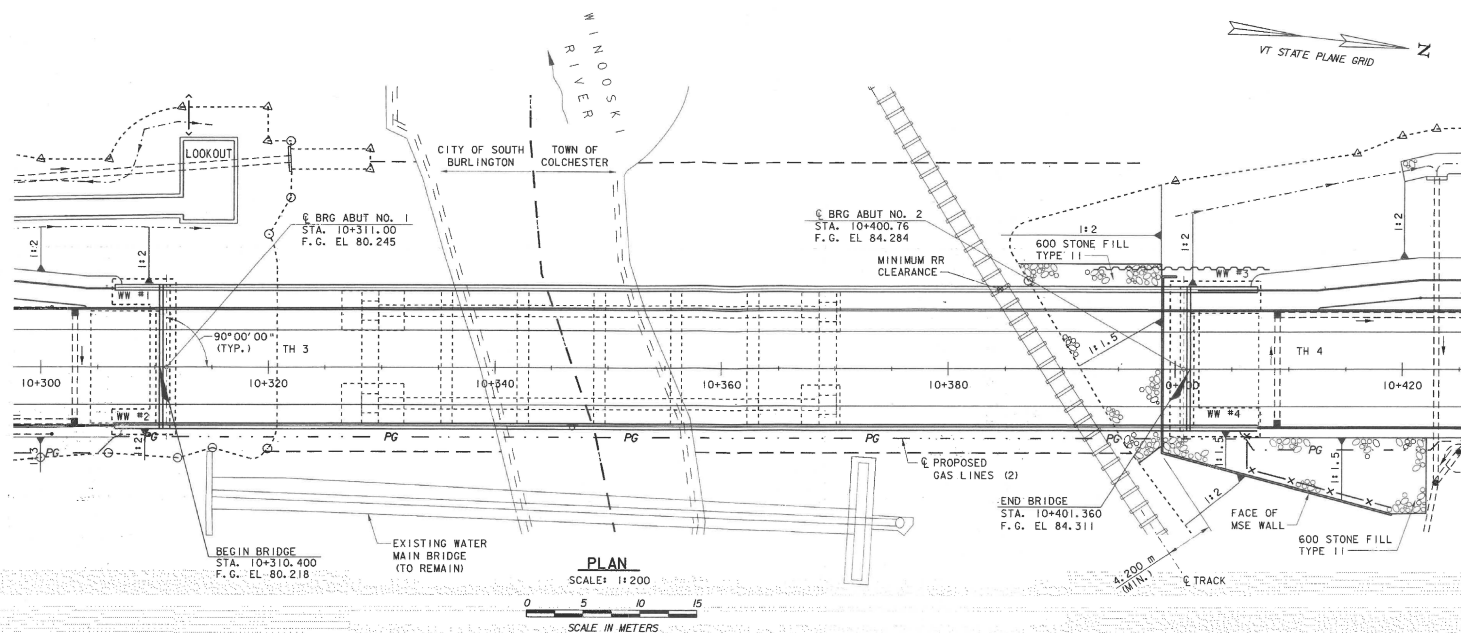
VANASSE HANGEN BRUSTLIN, INC.



DATUM
VERTICAL NAVD_88
HORIZONTAL NAD_83 (92)

VANASSE HANGEN BRUSTLIN, INC.

STATE OF VERMONT AGENCY OF TRANSPORTATION	
Town Of COLCHESTER-SOUTH BURLINGTON	Bridge No. 6
Highway No. TH 4/3	Log Sta. Surv. Sta.
TH 4/3 OVER WINDOSKI RIVER & N.E.C.R.	
PROFILE (5 OF 5)	
Designed By A.J. CRAWFORD	Drawn By C.L. CILLEY
Checked By S.M. GUNN	Bridge Design Supervisor S.M. GUNN
Date 6/03	Date 6/03
PROJECT COLCHESTER-SOUTH BURLINGTON	PROJECT NO. BRM 5600 (6) S C/2
I.G.C. Info.	
Bridge Sheet No. ZD139PR5 R.O.W. SHEET 11 OF 21	



STATE OF VERMONT AGENCY OF TRANSPORTATION	
Town Of COLCHESTER-SOUTH BURLINGTON	Bridge No. 6
Highway No. TH 4/3	Log Sta. Surv. Sta.
TH 4/3 OVER WINOOSKI RIVER & N. E. C. R.	
BRIDGE PLAN & ELEVATION	
Designed By K. G. KRETSCH	Drawn By B. J. MASSE
Checked By S. M. GUNN	Bridge Design Supervisor
Date 6/03	Date 6/03
PROJECT COLCHESTER-SOUTH BURLINGTON	PROJECT NO. BRM 5600 (6) S C/2
I.G.C. info. ZD1396PE	
R. O. W. SHEET 12 OF 21	

DATUM
VERTICAL_NAD_88
HORIZONTAL_NAD_83 (92)

VANASSE HANGEN BRUSTLIN, INC.

RIGHT - OF - WAY DETAIL SHEET



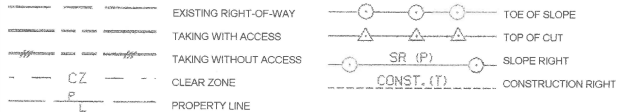
TABLE OF PROPERTY ACQUISITION

PROPERTY OWNER	SHEET NO.	BEGINNING STATION	ENDING STATION	TAKE	REMAINDER	RIGHT		RECORDING DATA				REMARKS				
						AREA ±	AREA ±	TYPE	(T)/(P)	AREA ±	TITLE		DATE	TOWN / CITY	BOOK	PAGE
CHAEEL'S COLLEGE	19	10+354.6 LT.	10+361.5 LT.					UTILITY EASE	(P)	23 SM	WDOE	7/14/2004	COLCHESTER	494	571-574	248 S.F.±
	19-21	10+607.38 LT. 10+491.6 LT. 10+459.1 LT. 10+566.0 LT. 10+600.6 LT. 10+608.0 LT. 10+814.2 LT. 10+816.0 LT. 10+835.3 LT. 10+855.2 LT.	10+667.42 LT. 10+529.5 LT. 10+664.9 LT. 10+604.4 LT. 10+619.8 LT.	70 SM				UTILITY EASE INSTALL & MAINTAIN UTILITY EASE INSTALL DRIVE REMOVE INSTALL & MAINTAIN REMOVE INSTALL & MAINTAIN	(P) (P) (P) (T) (T) (T) (P) (T) (P)	739 SM 263 SM 10 SM						763 S.F.± 0.18A± GUY ANCHOR & WIRE 2.723 S.F.± EROSION CONTROL, 108 S.F.± SIDEWALK GUY ANCHOR & WIRE TREE & STUMP GUY ANCHOR & WIRE
	19	10+353.23 LT. 10+373.3 RT. 10+408.7 RT. 10+411.8 RT.	10+437.75 RT. 10+390.5 RT.	227 SM				CULVERT & DR. (P) INSTALL & MAINTAIN INSTALL & MAINTAIN	(P) (P) (P)							2.443 S.F.± INCLUDES HEADWALL GUY ANCHOR & WIRE GUY ANCHOR & WIRE
	19-21	10+404.77 LT. 10+417.59 RT. 10+419.5 RT. 10+421.0 RT. 10+425.3 RT. 10+436.2 RT. 10+559.1 RT. 10+560.0 RT.	10+461.26 RT. 10+560.0 RT. 10+462.9 RT. 10+422.5 RT. 10+444.3 RT. 10+580.2 RT. 10+570.1 RT. 10+615.7 RT.	0.28HA±				SLOPE INSTALL & MAINTAIN CULVERT UTILITY EASE CONST. UTILITY EASE SLOPE	(P) (P) (P) (P) (T) (P) (T)	0.30HA 218 SM 0.16HA 50 SM 80 SM						2.756 SMA (0.68A) 3.000 SMA (0.74A) INCLUDES TEMP. EROSION CONTROL SEWER LINE 2.347 S.F.± 1.950 SMA (0.39A) INCLUDES EROSION CONTROL 539 S.F.±INCLUDES GAS LINE 861 S.F.±
LN ALLOCATED HOUSING PARTNERSHIP, LN BOND HOUSING LIMITED ERSHIP THE KILN OWNERS ASSOCIATION	17-18	10+021.87 LT. 10+029.5 LT. 10+038.7 LT. 10+081.1 LT. 10+071.4 LT. 10+079.1 LT. 10+082.9 LT. 10+085.0 LT. 10+100.0 LT. 10+140.0 LT. 10+151.56 LT.	10+151.74 LT. 10+074.8 LT. 10+074.9 LT. 10+088.0 LT. 10+079.1 LT. 10+140.0 LT. 10+151.95 LT. 10+151.56 LT.	211 SM±				INSTALL SLOPE REMOVE & RESET CULVERT DRIVE SLOPE DITCH & DRAINAGE CULVERT SLOPE INSTALL	(T) (T) (T) (T) (T) (T) (P) (P) (P) (T)	73 SM 63 SM 63 SM 90 SM 108 SM 38 SM	COND	8/13/2004	SOUTH BURLINGTON	677	546-547	2.271 S.F.± EROSION CONTROL, 786 S.F.± 678 S.F.± SHRUB 969 S.F.± 1,163 S.F.± 409 S.F.± SET NEW I.P. 9.14M (30.0') LT.
SKI VALLEY PARK DISTRICT	18,19	10+151.55 LT. 10+151.4 LT. 10+151.5 LT. 10+151.56 LT. 10+179.9 LT. 10+198.5 LT. 10+197.0 LT. 10+197.1 LT. 10+200.6 LT. 10+261.3 LT. 10+286.5 LT. 10+310.0 LT. 10+313.1 LT.	10+172.66 LT. 10+191.3 LT. 10+180.5 LT. 10+151.56 LT. 10+330.9 LT. 10+267.0 LT. 10+280.0 LT. 10+264.5 LT. 10+269.5 LT. 10+320.0 LT.	41 SM±				SLOPE DITCH & DRAINAGE INSTALL UTILITY EASE SLOPE DITCH & DRAINAGE INSTALL & MAINTAIN CONST. & MAINTAIN INSTALL INSTALL & MAINTAIN SLOPE REMOVE	(P) (P) (T) (P) (P) (P) (P) (P) (T) (P) (P) (P) (T)	131 SM 36 SM 913 SM 268 SM 119 SM 405 SM 20 SM 3 SM	WDOE	8/11/2004	SOUTH BURLINGTON	678	431-433	441 S.F.± 1,410 S.F.± 388 S.F.± NEW IRON PIN AT 9.14M (30.0') LT. 0.22A± 2.756 S.F.± 1.281 S.F.± GUY ANCHOR & WIRE PARKING AREA INCL. CONC. CURB 0.10A± EROSION CONTROL, 215 S.F.± GUY ANCHOR & WIRE 92 S.F. FENCE

TABLE OF REVISIONS

REVISION NO.	SHEET NO.	DESCRIPTION	DATE
1	15, 16, 17, 18, 19	PARCEL NO. 4 CEDAR BLUFF CONDOMINIUM HOMEOWNERS ASSOCIATION, INC. & FARWATER, LIMITED REVISE PARCEL 4 AND CREATE NEW PARCEL 12 PARCEL 4 = FARWATER, LIMITED PARCEL 12 = CEDAR BLUFF CONDOMINIUM HOMEOWNERS ASSOCIATION, INC. & FARWATER, LIMITED. PER C.O. 9338 DONE BY: G.J.F. APPROVED BY: R.P.D.	2/19/2004
2	15, 18	PARCEL NO. 4 FARWATER, LIMITED RELOCATE PROPERTY LINE BETWEEN PARCEL NO. 4 AND PARCEL 12 AND ADJUST ALL DRIVE, SLOPE, EROSION CONTROL AND ANY OTHER RIGHTS AS NECESSARY. PER C.O. 9343 DONE BY: M.R. APPROVED BY: R.P.D.	3/30/2004
3	16, 18	PARCEL NO. 12 CEDAR BLUFF CONDOMINIUMS HOMEOWNERS ASSOCIATION, INC. AND FARWATER, LIMITED. RELOCATE PROPERTY LINE BETWEEN PARCEL NO. 12 AND PARCEL 4 AND ADJUST ALL DRIVE, SLOPE, EROSION CONTROL AND ANY OTHER RIGHTS AS NECESSARY. PER C.O. 9344 DONE BY: M.R. APPROVED BY: R.P.D.	3/30/2004
4	14, 17, 19	PARCEL NO. 2 LAKE CHAMPLAIN HOUSING DEVELOPMENT CORPORATION, ET AL. REVISE NAME OF OWNERS ASSOCIATION TO READ "THE LIME KILN OWNERS ASSOCIATION" ON THE DETAIL SHEET. REVISE PARCEL 2 LABEL TO READ "LIME KILN ALLOCATED HOUSING LIMITED PARTNERSHIP, ET AL." ON LAYOUT SHEETS. PER C.O. 9354 DONE BY: G.J.F. APPROVED BY: R.P.D.	6/7/2004
5	18	PARCEL NO. 3 WINDOSKI VALLEY PARK DISTRICT AT STATION 10+151.74 LT. DELETE THE TEXT "REPLACE (T) (I.P.)" PER C.O. 9355 DONE BY: G.J.F. APPROVED BY: R.P.D.	6/7/2004
6	14, 19, 20, 21	PARCEL NO. 1 ST. MICHAEL'S COLLEGE MAKE CHANGES TO THE PERMANENT SLOPE & ADDITION OF SLOPE AT T.O.E. ADD REMOVE AND STUMP CEDAR PER C.O. 9356 DONE BY: G.J.F. APPROVED BY: R.P.D.	6/14/2004

PLAN LEGEND



- (P) -PERMANENT
- (T) -TEMPORARY
- DR -DRAINAGE RIGHT
- DIT -DITCHING RIGHT
- CH -CHANNEL RIGHT
- DRIVE -DRIVE RIGHT
- CUL -CULVERT RIGHT
- C&T -CLEARING & TRIMMING RIGHT
- SR -SLOPE RIGHT
- UE -UTILITY EASEMENT

APPROVED: ROGER P. DUMAS DATE: 09-15-03
CHIEF, PLANS & TITLES

PROJECT NAME: COLCHESTER - SOUTH BURLINGTON
PROJECT NUMBER: BRM 5600(6)S C/2

FILE NAME: 87D139D.XLS PLOT DATE: 06/07/04
PROJECT LEADER: SGF DRAWN BY: MR
DESIGNED BY: VHB, INC. CHECKED BY: EP
R.O.W. DETAIL SHEET 14 OF 21 SHEET 7 OF 124



LIME KILN ALLOCATED HOUSING LIMITED PARTNERSHIP, ET AL.

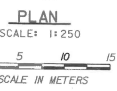
BEGIN R.O.W. PROJECT
BRM 5600 (6) S C/2
STA. 10+021.87
9.14M (30.0') LT.

2

BEGIN APPROACH
STA 10+000.000
MATCH EXISTING

BEGIN PROJECT
STA 10+045.000

EXISTING R.O.W. AS SHOWN ON A PLAN ENTITLED 'BOUNDARY RE-SURVEY & SUBDIVISION-PROPERTY KNOWN AS THE LEDGES' BY CHASE & CHASE, DATED 12/12/00, RECORDED IN VOL. 480, PAGE 85 OF THE CITY OF SOUTH BURLINGTON LAND RECORDS.



4 FARWATER, LIMITED

FOR R.O.W. USE ONLY

SEE DRAINAGE AND SEWER NOTES & DETAILS ON SHEETS 13 & 14 (R.O.W. SHEETS 5 & 6)

CONSTRUCTION NOTES

CONSTRUCT CONCRETE CURB

STA 10+042.5 - STA 10+130.0, RT
STA 10+042.5 - STA 10+072.5, LT
STA 10+085.3 - STA 10+130.0, LT

DURABLE 100 mm WHITE LINE
STA 10+000 - STA 10+130, LT & RT

DURABLE 100 mm YELLOW LINE (DOUBLE CENTER LINE)
STA 10+000 - STA 10+130

CONSTRUCT BUS PULLOUT

STA 10+110, RT 5.1 m - STA 10+130, RT 8.4 m

COLD PLACING
STA 10+000 - STA 10+015
TRAVEL LANE TAPER
STA 10+000, LT & RT 3390 TO STA 10+045, LT & RT 3300
PAVED SHOULDER TAPER
STA 10+000, LT & RT 0 TO STA 10+045, LT & RT 1800

CONSTRUCT SIDEWALK
STA 10+041.0 - STA 10+073.2, LT
STA 10+084.6 - STA 10+130.0, LT

CONSTRUCT SIDEWALK RAMP, TYPE 1 (SEE STD. C-3M)
STA 10+070.0 - STA 10+073.2, LT
STA 10+084.6 - STA 10+087.8, LT

CONSTRUCT SIDEWALK RAMP, TYPE 6 (SEE STD. C-3M)
STA 10+041.0 - STA 10+045.0, LT

CONSTRUCT DRIVE
STA 10+079, LT
50 BCP TYPE III, 7200 WIDE

REMOVE EXISTING CURB
STA 10+123 - 10+130, RT

REMOVE AND RESET SHRUB
STA 10+061, LT

LINES SHOWN ON THIS PLAN AS EXISTING PROPERTY LINES P/L ARE BELIEVED TO BE ACCURATE BUT SHOULD NOT BE RELIED UPON FOR PURPOSES UNRELATED TO THE CITY OF S. BURLINGTON'S ACQUISITION OF LAND AND RIGHTS FOR THIS PROJECT.

28-FEB-2005

STATE OF VERMONT AGENCY OF TRANSPORTATION

Town Of	COLCHESTER-SOUTH BURLINGTON	Bridge No.	6
Highway No.	TH 4/3	Log Sta.	
		Surv. Sta.	

PLAN (1 OF 5)			
Designed By	A. J. CRAWFORD	Drawn By	C. S. MERCER
Checked By	Date	Bridge Design Supervisor	
J. A. MERCER	6/03	S. M. GUNN	Date 6/03

PROJECT	COLCHESTER-SOUTH BURLINGTON	PROJECT NO.	BRM 5600 (6) S C/2
I.G.C. info.			

VANASSE HANGEN BRUSTLIN, INC. R.O.W. SHEET 17 OF 21 SHEET 10 OF 124

- LEGEND**
- UT --- EXISTING UNDERGROUND TELEPHONE LINE
 - W --- EXISTING UNDERGROUND WATER LINE
 - G --- EXISTING UNDERGROUND GAS LINE
 - S --- EXISTING UNDERGROUND SEWER LINE
 - AERIAL EST --- EXISTING OVERHEAD ELECTRIC & TELEPHONE LINE
 - FM --- EXISTING FORCED MAIN SEWER LINE
 - SD --- EXISTING STORM DRAIN
 - LEGE --- LEDGE
 - HYD --- HYDRANT
 - o --- VALVE
 - o --- MANHOLE
 - o --- MAILBOX
 - 4 I --- SIGNS
 - UTILITY POLE GUY WIRE
 - o --- GAS SHUTOFF
 - o --- LIGHT POLE
 - EAT --- PROPOSED OVERHEAD ELECTRIC & TELEPHONE BY OTHERS
 - PS --- PROPOSED SEWER LINE
 - PG --- PROPOSED GAS LINE BY OTHERS
 - PH --- PROPOSED WATER LINE BY OTHERS
 - PH --- PROPOSED PULL BOX BY OTHERS
 - FB --- PROPOSED FLUSHING BASIN
 - TOP OF CUT TO MATCH EXISTING
 - TOE OF SLOPE TO MATCH EXISTING

- SIGN LEGEND**
- N = NEW
 - R = REMOVE
 - B-B = BACK-TO-BACK
 - RET = RETAIN
 - R & S = REMOVE AND RESET
 - R & N = REMOVE AND NEW
 - o --- RETURN TO CITY OF SO. BURLINGTON

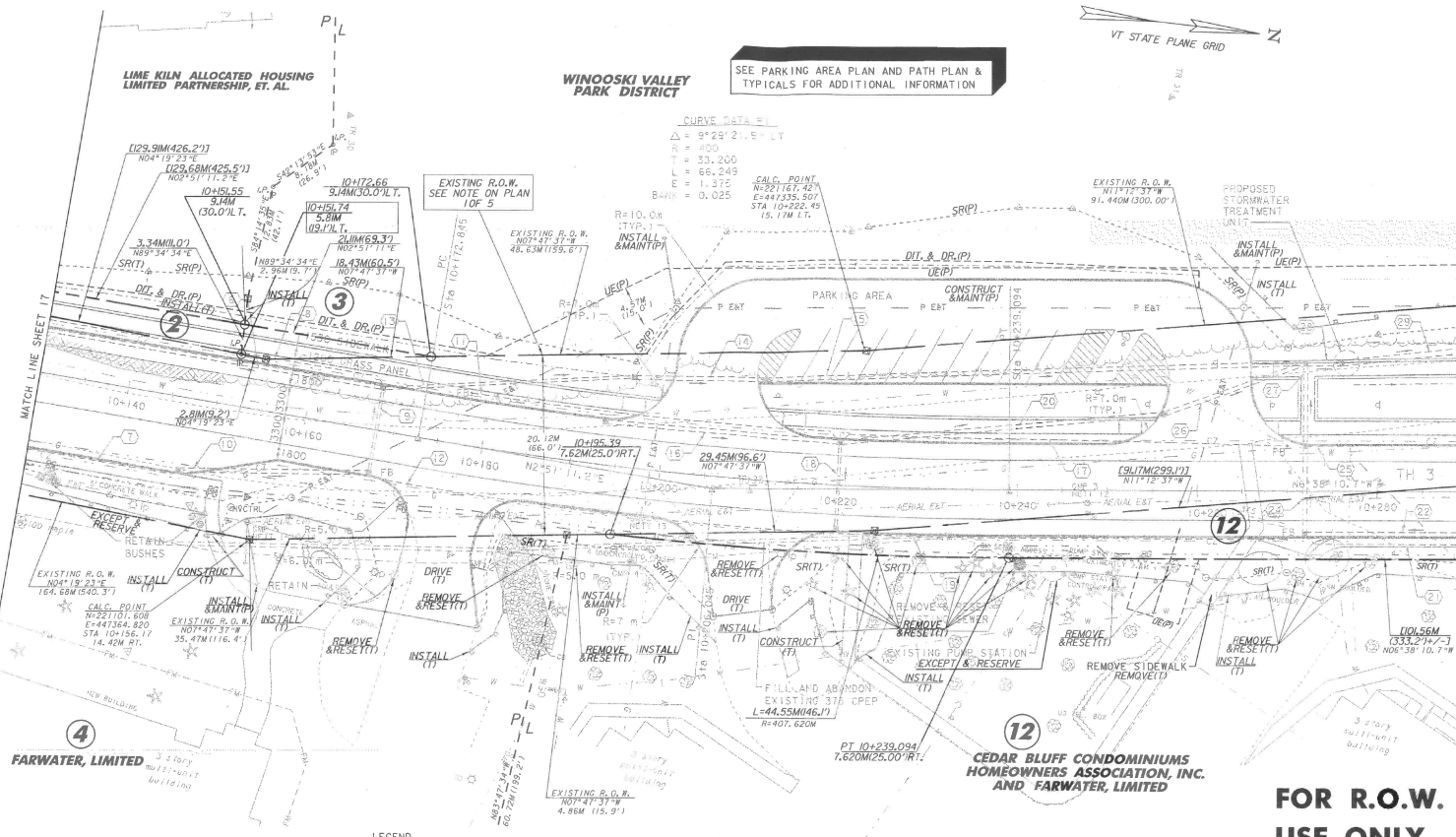
DATUM
VERTICAL NAVD 88
HORIZONTAL NAD 83 (92)



SEE PARKING AREA PLAN AND PATH PLAN & TYPICALS FOR ADDITIONAL INFORMATION

WINOOSKI VALLEY PARK DISTRICT

LIME KILN ALLOCATED HOUSING LIMITED PARTNERSHIP, ET AL.



- CONSTRUCTION NOTES**
- CONSTRUCT SIDEWALK**
 STA 10+130.0 - STA 10+197.6, LT
 STA 10+130.0 - STA 10+151.0, RT
 STA 10+222.0 - STA 10+222.8, RT
 STA 10+212.4 - STA 10+254.6, LT
 STA 10+268.2 - STA 10+290.0, LT
- CONSTRUCT DRIVE**
 STA 10+177, RT
 50 BCP TYPE III, 7500 WIDE
- STA 10+205, LT
 40 BCP TYPE III,
 50 BCP TYPE II, 9000 WIDE
- STA 10+210, RT
 50 BCP TYPE III, 7600 WIDE
- STA 10+261, LT
 40 BCP TYPE III,
 50 BCP TYPE II, 9000 WIDE
- CONSTRUCT CONCRETE CURB**
 STA 10+130 - STA 10+173, RT
 STA 10+130 - STA 10+198, LT
 STA 10+182 - STA 10+206, RT
 STA 10+213 - STA 10+222, RT
 STA 10+213 - STA 10+254, LT
 STA 10+223 - STA 10+290, LT
 STA 10+269 - STA 10+290, LT
- CONSTRUCT SIDEWALK RAMP, TYPE I**
 (SEE STD. C-3M)
 STA 10+195.0 - STA 10+198.4, LT
 STA 10+212.4 - STA 10+215.8, LT
 STA 10+222, RT
 STA 10+251.3 - STA 10+254.6, LT
 STA 10+268.2 - STA 10+271.5, LT
 STA 10+265.9 - STA 10+268.4, LT
- STEEL BEAM GUARDRAIL**
 STA 10+268.3 - STA 10+290.0, RT
- ANCHOR FOR STEEL BEAM GUARDRAIL**
 STA 10+270.3, RT
- DURABLE 100 mm WHITE LINE**
 STA 10+130 - STA 10+290, LT & RT
- DURABLE 100 mm YELLOW LINE**
DOUBLE CENTER LINE
 STA 10+130 - STA 10+290
- CONSTRUCT BUS PIVOT POINT**
 STA 10+130 - STA 10+147.8, RT 8.4 m
 STA 10+147.8, RT 8.4 m -
 STA 10+157.7, RT 5.1 m
- REMOVE EXISTING CURB**
 STA 10+130 - STA 10+160, RT
REMOVE & RESET BOULDERS
 STA 10+267, RT
 STA 10+274, RT
- REMOVE & RESET FRAME & COVER OF EXIST. SM**
 STA 10+240, RT

FOR R.O.W. USE ONLY

- LEGEND**
- UT — EXISTING UNDERGROUND TELEPHONE LINE
 - W — EXISTING UNDERGROUND WATER LINE
 - G — EXISTING UNDERGROUND GAS LINE
 - S — EXISTING UNDERGROUND SEWER LINE
 - AERIAL EBT — EXISTING OVERHEAD ELECTRIC & TELEPHONE LINE
 - FM — EXISTING FORCED MAIN SEWER LINE
 - SD — EXISTING STORM DRAIN
 - P E&T — PROPOSED OVERHEAD ELECTRIC & TELEPHONE BY OTHERS
 - PS — PROPOSED SEWER LINE
 - PG — PROPOSED GAS LINE BY OTHERS
 - PW — PROPOSED WATER LINE BY OTHERS
 - PB — PROPOSED PULL BOX BY OTHERS
 - FB — PROPOSED FLUSHING BASIN
 - TOP OF CUT TO MATCH EXISTING
 - TOE OF SLOPE TO MATCH EXISTING
 - PROPOSED LIGHT POLE

- REMOVE & RESET SHRUBS**
- STA 10+189.0, RT 10.4 m
 - STA 10+191.7, RT 11.3 m
 - STA 10+217.7, RT 11.3 m
 - STA 10+218.9, RT 16.4 m
 - STA 10+220.4, RT 7.9 m
 - STA 10+221.8, RT 11.8 m
 - STA 10+224.1, RT 6.3 m
 - STA 10+229.2, RT 8.1 m
 - STA 10+234.0, RT 8.8 m
 - STA 10+235.5, RT 8.2 m
 - STA 10+237.5, RT 9.0 m
 - STA 10+241.5, RT 9.8 m
 - STA 10+250.8, RT 9.2 m
 - STA 10+257.4, RT 8.3 m
 - STA 10+271.3, RT 9.3 m
 - STA 10+279.3, RT 7.9 m
- REMOVE & RESET LIGHT POLES**
- STA 10+172, RT TO 10+170.5, RT 15.5
 - STA 10+214, RT TO 10+215, RT 12.0



- SIGN LEGEND**
- N = NEW
 - R = REMOVE
 - B-B = BACK-TO-BACK
 - RET = RETAIN
 - R & S = REMOVE AND RESET
 - R & N = REMOVE AND NEW
 - ⓪ = RETURN TO CITY OF SO. BURLINGTON

SEE DRAINAGE AND SEWER NOTES & DETAILS ON SHEETS 13 & 14

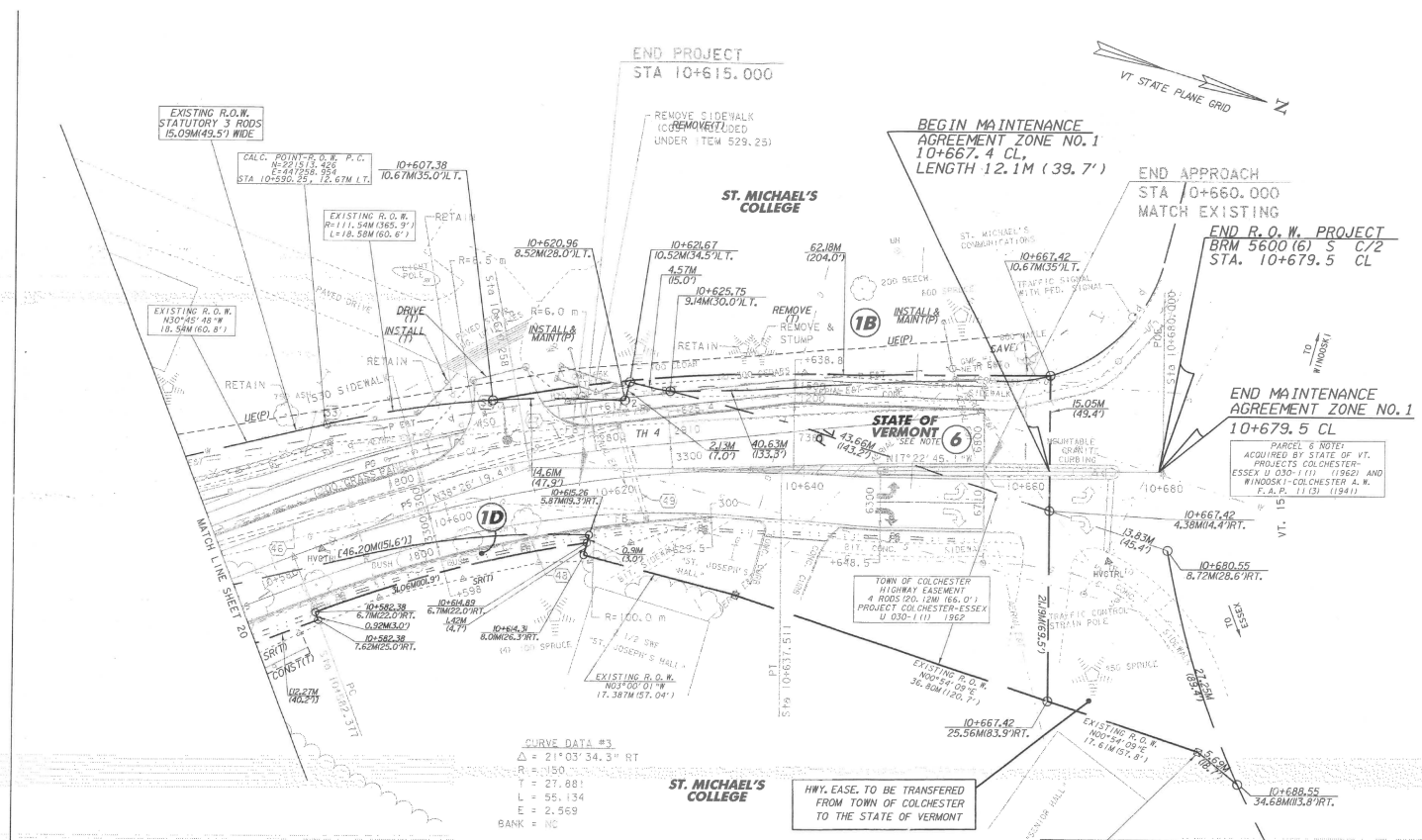
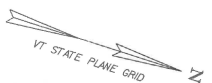
DATUM
 VERTICAL NAVD_88
 HORIZONTAL NAD_83 (92)

LINES SHOWN ON THIS PLAN AS EXISTING PROPERTY LINES P/L ARE BELIEVED TO BE ACCURATE BUT SHOULD NOT BE RELIED UPON FOR PURPOSES UNRELATED TO THE CITY OF S. BURLINGTON'S ACQUISITION OF LAND AND RIGHTS FOR THIS PROJECT.

STATE OF VERMONT AGENCY OF TRANSPORTATION

Town Of	COLCHESTER-SOUTH BURLINGTON	Bridge No.	6
Highway No.	TH 4/3	Log Sta.	
		Surv. Sta.	
TH 4/3 OVER WINOOSKI RIVER & N.E.C.R.			
PLAN (2 OF 5)			
Designed By	A. J. CRAWFORD	Drawn By	C. S. MERCER
Checked By	J. A. MERCER	Date	6/03
		Bridge Design Supervisor	S. M. GUNN
		Date	6/03
PROJECT	COLCHESTER-SOUTH BURLINGTON	PROJECT NO.	BRM 5600 (6) S/2
I.G.C. Info.			
R.O.W. SHEET 18 OF 21		SHEET 11 OF 124	

VANASSE HANGEN BRUSTLIN, INC.



CONSTRUCTION NOTES

- CONSTRUCT SIDEWALK
STA 10+575.0 - STA 10+603.0, LT
STA 10+613.3 - STA 10+660.0, LT
CONSTRUCT SIDEWALK RAMP, TYPE I
(SEE STD. C-3M)
STA 10+599.7 - STA 10+603.0, LT
STA 10+613.3 - STA 10+616.3, LT
CONSTRUCT CONCRETE CURB
STA 10+575 - STA 10+629.5, RT
STA 10+575 - STA 10+602.1, LT
STA 10+613.9 - STA 10+660, LT
DURABLE 100 mm WHITE LINE
STA 10+575 - STA 10+660, LT & RT
STA 10+648 - STA 10+660, RT TURNING LANE
DURABLE 100 mm YELLOW LINE (DOUBLE CENTER LINE)
STA 10+575 - STA 10+627.5
DURABLE 100 mm YELLOW LINE (SINGLE CENTER LINE)
STA 10+627.5 - STA 10+660, LT & RT
STA 10+627.5 - STA 10+648.5, LT & RT
DURABLE 200 mm DIAGONAL YELLOW LINE
STA 10+627.5 - STA 10+648
DURABLE SYMBOL
STA 10+653, RT ARROW-LEFT TURN
STA 10+653, RT ARROW-RIGHT TURN
CONSTRUCT DRIVE
STA 10+608, LT
50 BCP TYPE 1111, 6000 WIDE
STA 10+639, RT
COLD PLANE, 2000 APRON
50 BCP TYPE 1111, 2000 APRON
TRAVEL LANE TAPER
STA 10+625.4, LT (3300) TO
STA 10+660, LT (5660)
STA 10+598, RT (3300) TO
STA 10+648.5, RT (6300)
PAVED SHOULDER TAPER
STA 10+598, LT (1800) TO
STA 10+617.2, LT (2800) TO
STA 10+625.4, LT (2910) TO
STA 10+638.8, LT (3110) TO
STA 10+660, LT (300)
STA 10+598, RT (1800) TO
STA 10+630, RT (300)
COLD PLANTING
STA 10+645 - STA 10+660

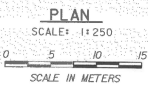
FOR R.O.W. USE ONLY

STATE OF VERMONT AGENCY OF TRANSPORTATION

Table with project details: Town of Colchester-South Burlington, Bridge No. 6, Highway No. TH 4/3, etc.

Table with design and project information: PLAN (5 OF 5), Designed By A.J. CRAWFORD, Drawn By C.S. MERCER, etc.

- LEGEND
UT - EXISTING UNDERGROUND TELEPHONE LINE
W - EXISTING UNDERGROUND WATER LINE
G - EXISTING UNDERGROUND GAS LINE
S - EXISTING UNDERGROUND SEWER LINE
AERIAL E&T - EXISTING OVERHEAD ELECTRIC & TELEPHONE LINE
FM - EXISTING FORCED MAIN SEWER LINE
SD - EXISTING STORM DRAIN
HYD - HYDRANT
V - VALVE
M - MANHOLE
P - MAILBOX
S - SIGNS
UP - UTILITY POLE GUY WIRE
G - GAS SHUTOFF
LP - LIGHT POLE
P E&T - PROPOSED OVERHEAD ELECTRIC & TELEPHONE BY OTHERS
PS - PROPOSED SEWER LINE
PG - PROPOSED GAS LINE BY OTHERS
PW - PROPOSED WATER LINE BY OTHERS
PB - PROPOSED PULL BOX BY OTHERS
FB - PROPOSED FLUSHING BASIN
TOP OF CUT TO MATCH EXISTING
TOE OF SLOPE TO MATCH EXISTING



HWY. EASE. TO BE TRANSFERED FROM TOWN OF COLCHESTER TO THE STATE OF VERMONT

Lines shown on this plan as existing property lines P/L are believed to be accurate but should not be relied upon for purposes unrelated to the town of Colchester's acquisition of land and rights for this project.

SIGN LEGEND

- N = NEW
R = REMOVE
B-B = BACK-TO-BACK
RET = RETAIN
R & S = REMOVE AND RESET
R & N = REMOVE AND NEW
RETURN TO CITY OF SO. BURLINGTON

SEE DRAINAGE AND SEWER NOTES & DETAILS ON SHEETS 13 & 14 (R.O.W. SHEETS 5 & 6)

VANASSE HANGEN BRUSTLIN, INC.

DATUM
VERTICAL NAVD 88
HORIZONTAL NAD 83 (92)