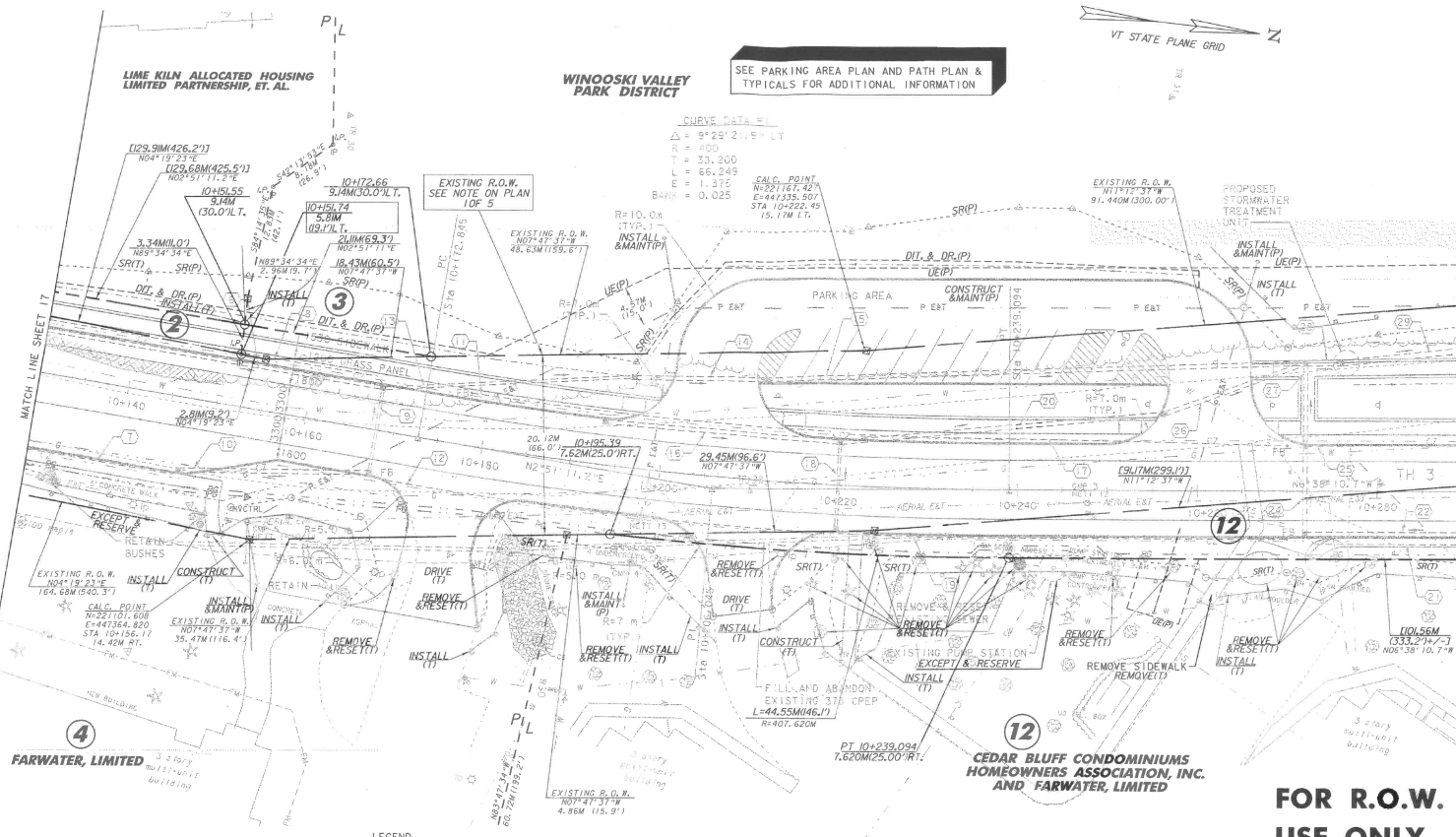




SEE PARKING AREA PLAN AND PATH PLAN & TYPICALS FOR ADDITIONAL INFORMATION

WINOOSKI VALLEY PARK DISTRICT

LIME KILN ALLOCATED HOUSING LIMITED PARTNERSHIP, ET AL.



CONSTRUCTION NOTES

CONSTRUCT SIDEWALK
 STA 10+130.0 - STA 10+197.6, LT
 STA 10+130.0 - STA 10+151.0, RT
 STA 10+222.0 - STA 10+222.8, RT
 STA 10+212.4 - STA 10+254.6, LT
 STA 10+268.2 - STA 10+290.0, LT

CONSTRUCT DRIVE
 STA 10+177, RT
 50 BCP TYPE III, 7500 WIDE

STA 10+205, LT
 40 BCP TYPE III,
 50 BCP TYPE II, 9000 WIDE

STA 10+210, RT
 50 BCP TYPE III, 7600 WIDE

STA 10+261, LT
 40 BCP TYPE III,
 50 BCP TYPE II, 9000 WIDE

CONSTRUCT CONCRETE CURB
 STA 10+130 - STA 10+173, RT
 STA 10+130 - STA 10+198, LT
 STA 10+182 - STA 10+206, RT
 STA 10+213 - STA 10+222, RT
 STA 10+213 - STA 10+254, LT
 STA 10+223 - STA 10+254, LT
 STA 10+223 - STA 10+290, RT
 STA 10+269 - STA 10+290, LT

CONSTRUCT SIDEWALK RAMP, TYPE I
 (SEE STD. C-3M)
 STA 10+195.0 - STA 10+198.4, LT
 STA 10+212.4 - STA 10+215.8, LT
 STA 10+222, RT
 STA 10+251.3 - STA 10+254.6, LT
 STA 10+268.2 - STA 10+271.5, LT
 STA 10+265.9 - STA 10+268.4, LT

STEEL BEAM GUARDRAIL
 STA 10+268.3 - STA 10+290.0, RT

ANCHOR FOR STEEL BEAM GUARDRAIL
 STA 10+270.3, RT

DURABLE 100 mm WHITE LINE
 STA 10+130 - STA 10+290, LT & RT

DURABLE 100 mm YELLOW LINE
DOUBLE CENTER LINE
 STA 10+130 - STA 10+290

CONSTRUCT BUS PIVOT
 STA 10+130 - STA 10+147.8, RT 8.4 m
 STA 10+147.8 - STA 10+151.7, RT 8.4 m
 STA 10+151.7, RT 5.1 m

REMOVE EXISTING CURB
 STA 10+130 - STA 10+160, RT
REMOVE & RESET BOULDERS
 STA 10+267, RT
 STA 10+274, RT

REMOVE & RESET FRAME & COVER OF EXIST. SM
 STA 10+240, RT

28-FEB-2005

FOR R.O.W. USE ONLY

- LEGEND**
- UT — EXISTING UNDERGROUND TELEPHONE LINE
 - W — EXISTING UNDERGROUND WATER LINE
 - G — EXISTING UNDERGROUND GAS LINE
 - S — EXISTING UNDERGROUND SEWER LINE
 - AERIAL EBT — EXISTING OVERHEAD ELECTRIC & TELEPHONE LINE
 - FM — EXISTING FORCED MAIN SEWER LINE
 - SD — EXISTING STORM DRAIN
 - P E&T — PROPOSED OVERHEAD ELECTRIC & TELEPHONE BY OTHERS
 - PS — PROPOSED SEWER LINE
 - PG — PROPOSED GAS LINE BY OTHERS
 - PW — PROPOSED WATER LINE BY OTHERS
 - PB — PROPOSED PULL BOX BY OTHERS
 - FB — PROPOSED FLUSHING BASIN
 - TOP OF CUT TO MATCH EXISTING
 - TOE OF SLOPE TO MATCH EXISTING
 - PROPOSED LIGHT POLE

REMOVE & RESET SHRUBS

- STA 10+189.0, RT 10.4 m
- STA 10+191.7, RT 11.3 m
- STA 10+217.7, RT 11.3 m
- STA 10+218.9, RT 16.4 m
- STA 10+220.4, RT 7.9 m
- STA 10+221.8, RT 11.8 m
- STA 10+224.1, RT 6.3 m
- STA 10+229.2, RT 8.1 m
- STA 10+234.0, RT 8.8 m
- STA 10+235.5, RT 8.2 m
- STA 10+237.5, RT 9.0 m
- STA 10+241.5, RT 9.8 m
- STA 10+250.8, RT 9.2 m
- STA 10+257.4, RT 8.3 m
- STA 10+271.3, RT 9.3 m
- STA 10+279.3, RT 7.9 m

REMOVE & RESET LIGHT POLES

- STA 10+172, RT TO 10+170.5, RT 15.5
- STA 10+214, RT TO 10+215, RT 12.0



SEE DRAINAGE AND SEWER NOTES & DETAILS ON SHEETS 13 & 14

SIGN LEGEND

- N = NEW
- R = REMOVE
- B-B = BACK-TO-BACK
- RET = RETAIN
- R & S = REMOVE AND RESET
- R & N = REMOVE AND NEW
- ⓪ = RETURN TO CITY OF SO. BURLINGTON

LINES SHOWN ON THIS PLAN AS EXISTING PROPERTY LINES P/L ARE BELIEVED TO BE ACCURATE BUT SHOULD NOT BE RELIED UPON FOR PURPOSES UNRELATED TO THE CITY OF S. BURLINGTON'S ACQUISITION OF LAND AND RIGHTS FOR THIS PROJECT.

DATUM
 VERTICAL NAVD_88
 HORIZONTAL NAD_83 (92)

STATE OF VERMONT AGENCY OF TRANSPORTATION

Town Of	COLCHESTER-SOUTH BURLINGTON	Bridge No.	6
Highway No.	TH 4/3	Log Sta.	
		Surv. Sta.	
TH 4/3 OVER WINOOSKI RIVER & N.E.C.R.			
PLAN (2 OF 5)			
Designed By	A. J. CRAWFORD	Drawn By	C. S. MERCER
Checked By	J. A. MERCER	Date	6/03
		Bridge Design Supervisor	S. M. GUNN
		Date	6/03
PROJECT	COLCHESTER-SOUTH BURLINGTON	PROJECT NO.	BRM 5600 (6) S/2
I.G.C. Info.		R.O.W. SHEET 18 OF 21	
		SHEET 11 OF 124	