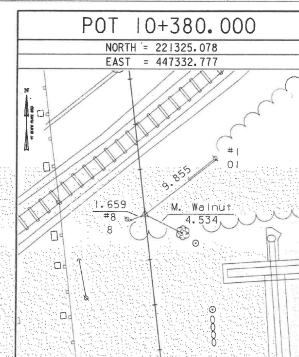
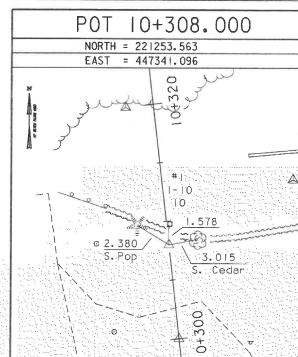
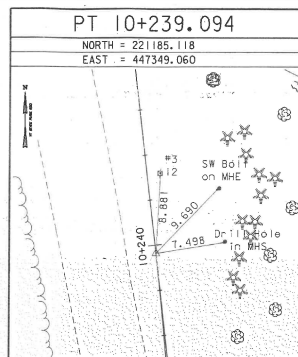
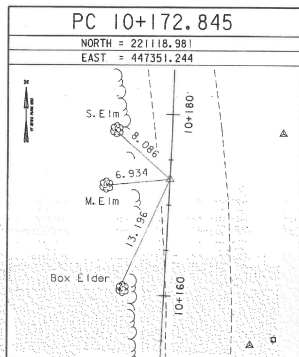
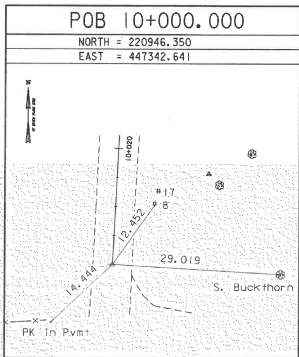


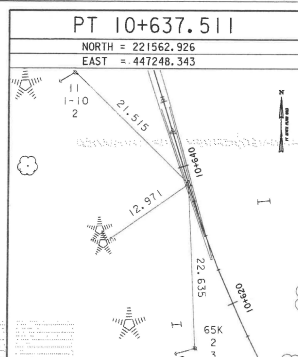
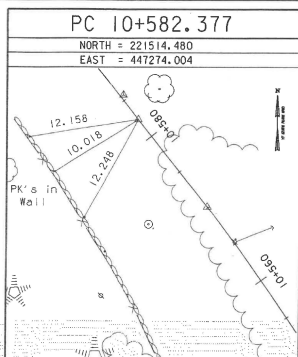
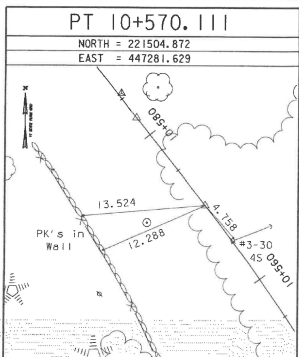
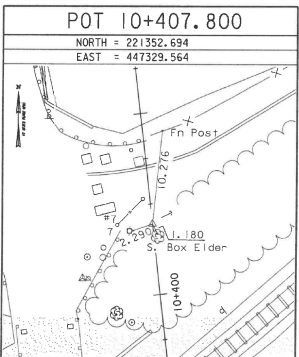
* Main Traverse Completed 04/03/91 by J. Sheridan P.C. & R. Bullock revised 01/30/02 by L. Orvis P.C. & T. Wilson

TRAVERSE TIES



* Alignment Staked 04/03/91 by L. Orvis P.C. & T. Wilson

ALIGNMENT TIES



DATUM	
VERTICAL	NAVD 88
HORIZONTAL	NAD 29
ADJUSTMENT	Compass

STATE OF VERMONT AGENCY OF TRANSPORTATION			
Town Of	COLCHESTER-SOUTH BURLINGTON	Bridge No.	6
Highway No.	TH 4/3	Log. Sta.	
		Surv. Sta.	
TH 4/3 OVER WINDOOSKI RIVER & N.E.C.R.			
SURVEY TIE SHEET			
Designed By	VTRANS	Drawn By	VTRANS
Checked By	Date	Bridge Design Supervisor	Date
VTRANS	6/03	VTRANS	6/03
PROJECT	COLCHESTER-SOUTH BURLINGTON	PROJECT NO.	BRM 5600 (6) S C/2
I.G.C. info.			
Bridge Sheet No.	ZD139m1	R.O.W. SHEET	13 OF 21

VANSASSE HANGEN BRUSTLIN, INC.